

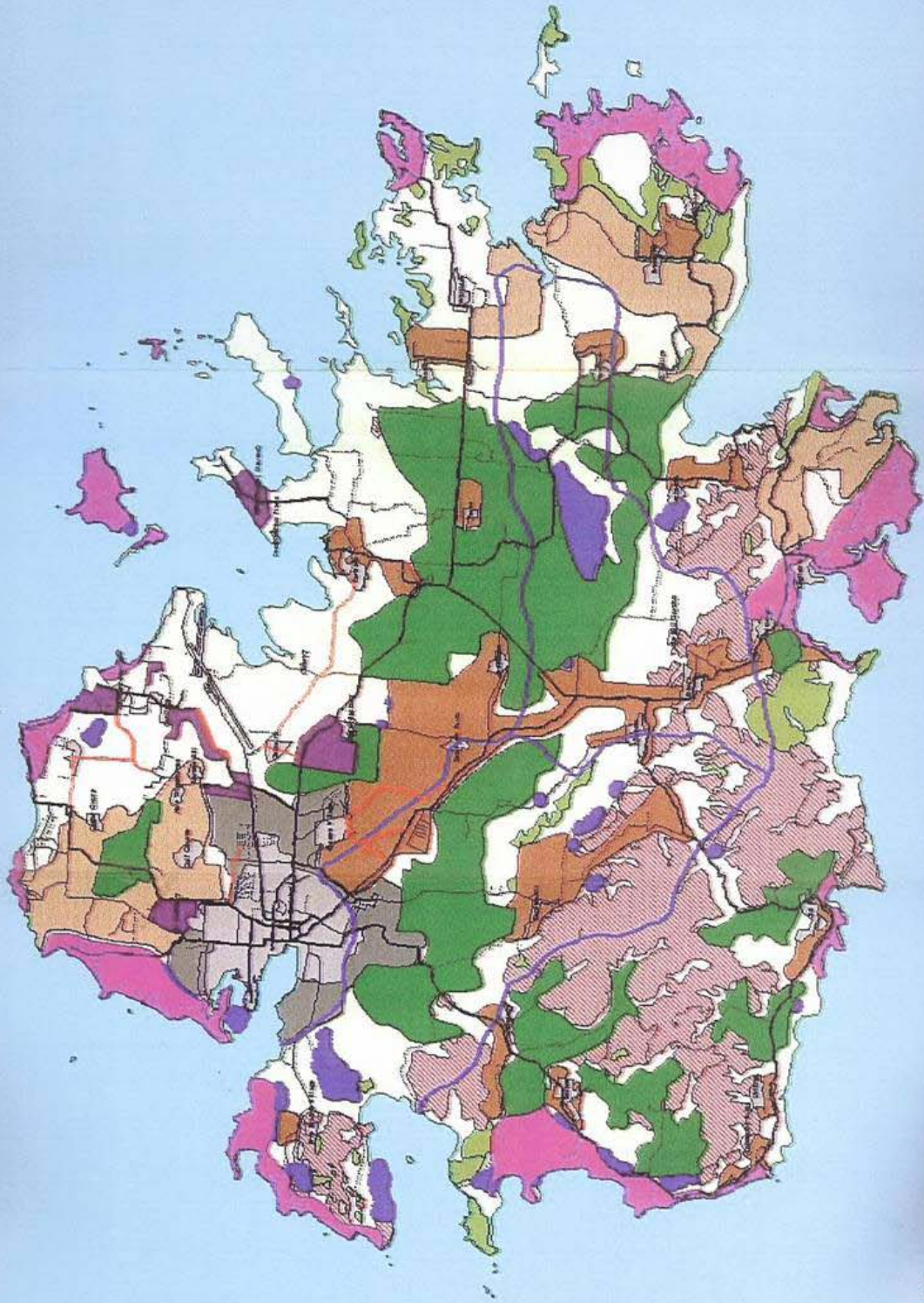


**MAP 1:      MAP SHOWING LOCATION OF ANTIGUA AND BARBUDA IN THE CARIBBEAN SEA**

# PROPOSED LANDUSE - ANTIGUA

## LEGEND

- INDUSTRIAL
- CLASS 9 SETTLEMENT
- AGRICULTURE
- LOW DENSITY RESIDENTIAL
- MEDIUM DENSITY RESIDENTIAL
- ST. JOHN'S
- TOURISM
- EROSION
- PONDS
- SLPOE
- LAND
- MAIN ROAD
- SECONDARY ROAD
- TRACK
- NEED RESURFACE
- WATER SHED

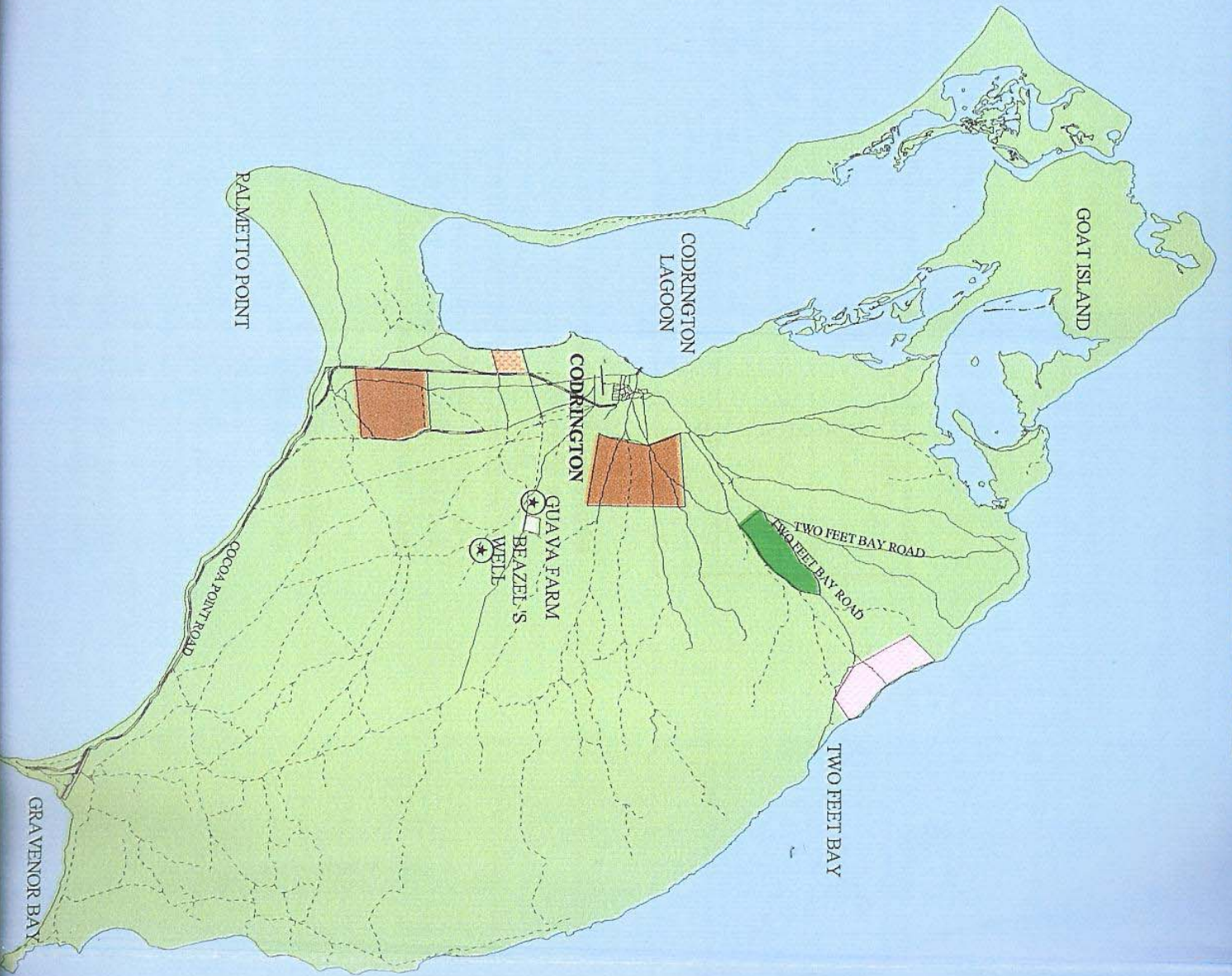


MAP 2A

PREPARED BY:  
DEVELOPMENT CONTROL AUTHORITY  
GOVERNMENT OF  
ANTIGUA AND BARBUDA

1:100000

# PROPOSED LANDUSE - BARBUDA



- MAIN ROAD
- SECOND
- TRACK
- AGRICULTURE
- HOUSING
- LAND FILL
- RESIDENT
- TOURISM (PROP)

MAP # 2B