



GEF-6 REQUEST FOR Chemicals and Wastes ENABLING ACTIVITY
PROPOSAL FOR FUNDING UNDER THE GEF Trust Fund

For more information about GEF, visit TheGEF.org

PART I: PROJECT IDENTIFIERS

Project Title:	National Action Plan on Mercury in the Artisanal and Small-Scale Gold Mining sector in Burkina Faso		
Country(ies):	Burkina Faso	GEF Project ID: ¹	*
GEF Agency(ies):	UNIDO (select)	GEF Agency Project ID:	160033
Other Executing Partner(s):	The General Directorate of Environmental Preservation and Sustainable Development under the Ministry of Environment, Green Economy and Climate Change (MEGECC), Artisanal Gold Council (AGC)	Submission Date:	12/13/2016
GEF Focal Area (s):	Chemicals and Wastes	Project Duration (Months)	24
Type of Report:	National Action Plan (NAP)	Expected Report Submission to Convention	(n/a)

A. PROJECT FRAMEWORK*

Project Objective: National capacity and capability improved for prevention and management of mercury use, through the preparation of a National Action Plan (NAP) for the artisanal and small-scale gold mining (ASGM) sector				
Project Component	Project Outcomes	Project Outputs	(in \$)	
			GEF Project Financing	Confirmed Co-financing ²
1. Improve understanding on the scope of mercury in the ASGM sector and strengthen national capacity to implement Article 7 of the Minamata Convention	1.1 Participatory stakeholders able to manage mercury in the ASGM sector (awareness, technical skills, expertise)	1.1.1: Information disseminated and project coordination mechanism established 1.1.2: National comprehensive analysis of ASGM sector completed to support the development and implementation of a road map to prevent and reduce mercury use, emissions and releases 1.1.3: Institutional capacity needs assessment completed to develop a public health strategy on ASGM 1.1.4: Rapid health situation assessment conducted; drafting of the public health strategy initiated and	347,000	192,000

¹ Project ID number will be assigned by GEFSEC and to be entered by Agency in subsequent document submission.

² Co-financing for enabling activity is encouraged but not required.

		awareness raising workshops organized		
2. Draft of the NAP for endorsement	2.1 NAP drafted for the endorsement from relevant stakeholders	2.1.1: NAP drafted and presented to relevant stakeholders for interactive feedback	83,000	
3. Monitoring and evaluation	3.1 Project achieves objective on time through effective monitoring and evaluation	3.1.1 Periodic monitoring and terminal evaluation of project implementation completed	25,000	12,000
Subtotal			455,000	204,000
Project Management Cost ³			45,000	12,000
Total Project Cost			500,000	216,000

* List the \$ by project components. Please attach a detailed project budget table that supports all the project components in this table.

B. SOURCE OF CO-FINANCING FOR THE PROJECT BY NAME AND BY TYPE

Sources of Co-financing	Name of Co-financier	Type of Co-financing	Amount (\$)
GEF Agency	UNIDO	Grants	19,000
GEF Agency	UNIDO	In-kind	12,000
Recipient Government	Ministry of Environment, Green Economy and Climate Change	In-kind	10,000
CSO	Artisanal Gold Council	In-kind	175,000
Total Co-financing			216,000

C. GEF FINANCING RESOURCES REQUESTED BY AGENCY, COUNTRY AND PROGRAMMING OF FUNDS

GEF Agency	Trust Fund	Country/ Regional/ Global	Focal Area	Programming of Funds	(in \$)		
					GEF Project Financing (a)	Agency Fee (b) ^{b)}	Total (c)=a+b
UNIDO	GEFTF	Burkina Faso	Chemicals and Wastes	Mercury	500,000	47,500	547,500
Total GEF Resources					500,000	47,500	547,500

a) Refer to the [Fee Policy for GEF Partner Agencies](#)

PART II: ENABLING ACTIVITY JUSTIFICATION

A. ENABLING ACTIVITY BACKGROUND AND CONTEXT (Provide brief information about projects implemented since a country became party to the convention and results achieved):	<p>Burkina Faso became a signatory to the Convention on 10 October 2013. Aware of the threats mercury can impose on human health and the global environment, the Government has been an active participant in international programmes and agreements to address mercury releases and uses.</p> <p>The treaty has a phased approach to reduce, and where possible, eliminate mercury use in key industrial sectors. Provisions of the Convention include deadlines established for supply sources and trade, mercury added products, and manufacturing processes in which mercury or mercury compounds are used. As the Artisanal and Small Scale Gold Mining (ASGM) sector is a major source of mercury release and environmental pollution in the world, the Article 7 of the Convention requires countries where artisanal and small-scale gold mining and processing is more than insignificant to develop a National Action Plan (NAP) in order to reduce the use of mercury and</p>
--	---

³ This is the cost associated with the unit executing the project on the ground and could be financed out of trust fund or co-financing sources. For EAs within the ceiling, PMC could be up to 10% of the Subtotal GEF Project Financing.

mercury compounds within three years of the treaty entering into force.

According to Article 7 and Annex C of the Convention, as well as the Global Environment Facility's (GEF) guidelines on Enabling Activities (EA), each Party that is subject to the provisions of paragraph 3 of the article 7 shall include in its NAP:

- (a) National objectives and reduction targets;
- (b) Actions to eliminate (i) whole ore amalgamation, (ii) open burning of amalgam or processed amalgam, (iii) burning of amalgam in residential areas, (iv) cyanide leaching in sediment and ore or tailings to which mercury has been added without first removing the mercury;
- (c) Steps to facilitate the formalization or regulation of the ASGM;
- (d) Baseline estimates of the quantities of mercury used and the practices employed in ASGM and processing within its territory;
- (e) Strategies for promoting the reduction of emissions and releases of and exposure to mercury in ASGM and processing, including mercury-free methods;
- (f) Strategies for managing trade and preventing the diversion of mercury and mercury compounds from both foreign and domestic sources to use in ASGM mining and processing;
- (g) Strategies for involving stakeholders in the implementation and continuing development of the national action plan;
- (h) A public health strategy on the exposure of ASGM miners and their communities to mercury, including gathering of health data, training for health-care workers and awareness raising through health facilities;
- (i) Strategies to prevent the exposure of vulnerable populations, particularly children and women of child-bearing age, especially pregnant women, to mercury used in ASGM;
- (j) Strategies for providing information to ASGM gold miners and affected communities; and
- (k) Schedule for the implementation of the national action plan.

While an explicit focus of the health activities is not envisaged in the NAP, the proposed project will also lay the ground work for actions called for under Article 16 of the Convention. The NAP will also include a road map to reduce the use of mercury in the sector including potential funding sources to implement it and an assessment and cost-benefit analysis of technically available and economically feasible techniques and technologies to replace and prevent the use of mercury.

Burkina Faso is the fourth largest gold producer in Africa. ASGM is a major income source for a large part of the population in the country. Alliance for Responsible Mining (ARM) estimates that 700,000 people are working directly in informal mines in the country, producing 20 tonnes of gold per year - a figure comparable to the production of all the industrial mines in the country. ASGM activities are conducted in more than 200 mine sites distributed along the national territory during all seasons. Since 2000, the use of mercury in the sector has become a common practice by the miners who are not aware of the risks related to its usage to human health and environment.

In 2000, the government of Burkina Faso and the World Bank initiated a project, entitled PRECAGEM, to reinforce the national capacities of the ASGM sector. In the context of this initiative, the National Supervisory Agency of Artisanal and Semi-Mechanized Exploitation (ANNEMAS, acronym in French) was created to address issues related to formalization of miners, gold trade, security, fraud, child labour in ASGM, etc. A regional and departmental consultation structure was also created through which problems related to ASGM can be discussed.

In 2007, United Nations Environment Programme (UNEP) developed a national inventory on mercury in Burkina Faso which included information on the ASGM sector. Since then, a lot has changed in the country regarding the use and emissions of mercury. In order to update the data collected in 2007 and fulfill the obligations of the Minamata Convention on Mercury, Burkina Faso is part of the project “Minamata Convention Initial Assessment in Francophone II” that is being implemented by UNIDO. Currently, the country is also part of the ongoing regional GEF project developed by UNIDO to improve the health and environment of ASGM communities in Burkina Faso, Mali and Senegal in collaboration with Artisanal Gold Council (AGC) and Alliance for Responsible Mining (ARM).

The initiative aims to adopt low-mercury or mercury-free technology in pilot communities and assess the applicability of certification schemes to enable miners to certify their activities. ASGM miners from pilot projects in Burkina Faso and Senegal have already produced mercury-free gold in the country. The project is currently under terminal evaluation and will officially conclude in December 2016.

Finally, Burkina Faso is one of the child projects under the GEF GOLD Global Opportunities for Long Term Development of the ASGM Sector Programme which was approved by the GEF Council in October 2016. Recognizing the importance of the NAP process in setting national priorities for mercury reduction under the Convention, the two projects will work with both MEGECC and ANEEMAS. During the NAP development process, the GEF GOLD child project can help identify potential NAP strategies, as well as inform reasonable objectives and targets, since the activities of the project will be oriented to assist Burkina Faso to meet such targets. In turn, the GEF GOLD child project may also, where possible, make ongoing refinements to complement the priorities articulated during the NAP stakeholder process.

The efforts made by Burkina Faso, mentioned above, demonstrate that this project is fully in line with the country's goal to map and prevent mercury related environment and health problems in the ASGM sector and invest in technological solutions to fulfill obligations under the Minamata Convention.

<p>B. ENABLING ACTIVITY GOALS, OBJECTIVES, AND ACTIVITIES (The proposal should briefly justify and describe the project framework. Identify also key stakeholders involved in the project including the private sector, civil society organizations, local and indigenous communities, and their respective roles, as applicable. Describe also how the gender equality and women's empowerment are considered in project design and implementation):</p>	<p>The outcomes of the proposed project will be the enablement of participatory stakeholders to manage mercury in the ASGM sector, as well as the NAP's finalization for the endorsement of relevant stakeholders and future submission by the government to the Minamata Convention secretariat. The activities of the project will fill the gaps required to develop the NAP, by assisting the government of Burkina Faso and ASGM partners in the formulation of a clear road map to prevent, reduce, and where feasible eliminate mercury emissions and by increasing awareness of risks to human and ecosystem health. This will include:</p> <p>(a) Analysis of the ASGM sector, including main mining areas, miners/private sector involved, relevant stakeholders, level of formalization and other relevant information as well as an assessment on the involvement of women and children; (b) baseline estimates of the quantities of used mercury and other harmful chemicals, such as cyanide, and practices employed in the ASGM sector within the country; (c) assessment of institutional capacity in the health sector, particularly in locations/areas host to ASGM activities, to gather health data on mercury exposure, and conduct training and awareness raising activities; (d) options for the elimination of the practices specified in the Annex C of the Convention; (e) strategies to prevent exposure to mercury together with the health authorities, which are inclusive of a special focus on vulnerable populations including women and children; (f) definition of steps to formalize ASGM sector; (g) strategies for managing trade and preventing the diversion of mercury; (h) strategies for involving stakeholders in the implementation and continuing development of the NAP; (i) consultation activities for ASGM miners and affected communities as well as for national and regional-level policy makers; and (j) a road map for the reduction of mercury in the sector, including needed interventions and potential funding sources to implement it.</p> <p>As the ASGM activities are conducted in the whole country, the project won't focus on a specific region. GEF resources will help Burkina Faso to identify and prioritize hotspot areas for future investments and intervention in the country to promote sound chemicals management as a key component of green industrial growth.</p> <p>The key stakeholders will be consulted and engaged throughout the project implementation process as follows.</p> <p>UNIDO will act as the GEF Implementing Agency (IA) for the project. The UNIDO project manager will provide technical advice, as well as coordinate and monitor the project activities.</p>
--	---

The **General Directorate of Environmental Preservation and Sustainable Development** under the **Ministry of Environment, Green Economy and Climate Change (MEGECC)** will serve as the main national executing agency, assisting with day-to-day management of project activities. MEGECC will be responsible for Output 1.1 and a part of Output 2.1. The Minamata Convention focal point in the Ministry will be responsible for the day-to-day compliance with the treaty and its provisions. MEGECC will also act as the chair and secretariat of the National Steering Group (NSG). The NSG will be established as an inter-ministerial Steering Group comprised of representatives of MEGECC and UNIDO; technical and policy experts; and other relevant ministries and associations to provide overall guidance and coordination. All project amendments will be done in accordance with the UNIDO rules and regulations and GEF policy GEF/C.39/Inf.3.

Artisanal Gold Council (AGC) will act as the main executing agency assisting with day-to-day management and providing technical expertise for the development of all mercury related activities and other aspects related to the Minamata Convention and the responsible development of the ASGM sector. AGC has been active in the Global Mercury Partnership and the Minamata Convention negotiations and is currently the executing agency for several NAPs under implementation with UNIDO and UNEP. AGC will be responsible for Outputs 1.2, 1.3 1.4 and a part of Output 2.1.

The project will be executed via subcontract to MEGECC and AGC and following agreements with national counterparts and executing partners at the inception phase, an interagency agreement with UNEP. Please refer to Annex A for a total estimation of the GEF grant and co-financing budget breakdown. Budget for the final evaluation is included as part of the monitoring and evaluation table on page 11.

The **Ministry of Mines, Energy and Quarries (MMEQ)** will collaborate closely with MEGECC and the executing agency to provide technical support on activities related to the preparation of the NAP. The collaboration will include provide inputs during (a) preparation of the national comprehensive analysis of ASGM; (b) development of road map to prevent and reduce mercury use, emissions and releases; and (c) finalization and endorsement of the NAP.

The **Ministry of Health (MoH)** will provide national leadership and technical support for the health related activities in close collaboration with the MEGECC and the executing agency.

Miners, mining communities and indigenous groups will be consulted during the production of national information on the scope of mercury in ASGM, sensitized through training and engaged to promote the prevention, reduction and elimination of mercury use in the sector.

ASGM stakeholders, including academia, NGOs, and the private sector, will be engaged to assist in the development of the NAP. This network of stakeholders will liaise with miners to increase awareness, share knowledge and promote technology transfer to prevent and reduce mercury use in the ASGM sector within the enabling activities framework and to develop a responsible and sustainable ASGM sector.

An expert team comprised of national and international consultants and technical specialists will be recruited by UNIDO to provide technical support for the NAP implementation. The team will be selected based on technical expertise to assist in the development of a national comprehensive analysis of ASGM sector and plan activities for national capacity building.

	<p>The project will not have an impact on indigenous people groups as they are not present in the specific areas of intervention where the project will be executed.</p> <p>Please refer to Annex B for a flow chart of various stakeholders.</p> <p>Recognizing that the level of exposure to mercury and its related impacts on human health are determined by social and biological factors, women, children and men might be exposed to different kinds, levels and frequency of mercury. Therefore, gender mainstreaming will play a key role in the development of the NAP and will be an integral part of the project activities.</p> <p>This will be addressed based on UNIDO's gender policy, among others by involving women and vulnerable groups at the sector level, in the information sharing and dissemination events, in the project coordination unit and national committee, and at the stakeholder level (e.g. by consulting women during the analysis of the ASGM sector and the assessment of health impacts of mercury use). Special attention will be paid to gender equality when evaluating and inviting members to participate in the National Committee and attending the awareness workshops. During recruitment process, female candidates will be encouraged to apply and efforts will be made to target female audience in advertisement.</p> <p>Assessments to mitigate gender inequality, prevent child labor and protect indigenous communities will be part of the proposed NAP.</p>
--	--

<p>C. DESCRIBE THE ENABLING ACTIVITY AND INSTITUTIONAL FRAMEWORK FOR PROJECT IMPLEMENTATION (discuss the work intended to be undertaken and the output expected from each activity as outlined in Table A).</p>	<p>This project sets out the activities necessary to improve the national capacity and capability for the management of mercury in the ASGM sector, through the preparation of a National Action Plan (NAP). Outputs from the project will also provide a basic situation evaluation and inventory/characterization of the ASGM sector that will assist in the design of future interventions to meet the obligations of the Convention. The NAP will generate global environmental and socio-economic benefits, as well as enable Burkina Faso to place mercury management at the leading edge of their sustainable development agenda. The planned activities per output are listed below:</p> <p>Output 1.1.1: Information disseminated and project coordination mechanism established</p> <p>Activity 1.1.1.1: Conduct national start-up workshop</p> <p>Activity 1.1.1.2: Establish ASGM coordination mechanism at the national level</p> <p>Activity 1.1.1.3: Develop strategies to involve stakeholders in the implementation and continued development of the NAP, with particular emphasis on gender equality</p> <p>Activity 1.1.1.4: Organize consultation workshops with the main stakeholders, including artisanal and small-scale gold miners, affected communities, members of the relevant ministries, as well as national and regional-level policy makers adapting time and location of the events to different gender groups' needs</p> <p>Output 1.1.2: National comprehensive analysis of ASGM sector completed to support the development and implementation of a road map to prevent and reduce mercury use, emissions and releases</p> <p>Activity 1.1.2.1: Collect and develop tools and methodologies for NAP development</p> <p>Activity 1.1.2.2: Conduct capacity building trainings including ASGM and mercury inventory baselining and monitoring</p> <p>Activity 1.1.2.3: Collect and analyze data on the ASGM sector (e.g. quantities of mercury used and practices employed; number of main mining sites and miners; relevant stakeholders including miners and private sector; and level of sector formalization; role and number of women and children involved)</p> <p>Activity 1.1.2.4: Draft national objectives and reduction targets</p> <p>Activity 1.1.2.5: Draft steps to facilitate the formalization or regulation of ASGM sector</p> <p>Activity 1.1.2.6: Propose strategies to promote reduction of mercury emissions and releases in ASGM and actions to eliminate worst practices mentioned on Annex C of Minamata Convention</p> <p>Activity 1.1.2.7: Identify potential sources of necessary funding to implement the road map as part of the NAP</p> <p>Activity 1.1.2.8: Knowledge management and information exchange through the Global Mercury Partnership website and/or partner's websites and tools</p> <p>Output 1.1.3: Institutional capacity needs assessment completed to develop a public health strategy on ASGM</p>
---	--

	<p>Activity 1.1.3.1 Consult representatives of various ministries and other stakeholder groups Activity 1.1.3.2 Identify institutional capacity gaps/barriers Activity 1.1.3.3 Finalize institutional capacity needs assessment report on public health</p> <p>Output 1.1.4: Rapid health situation assessment conducted; drafting of the public health strategy initiated and awareness raising workshops organized*</p> <p>Activity 1.1.4.1 Plan and adapt the survey tools produced by the Artisanal Gold Council (AGC), as well as other tools, to Burkina Faso's context Activity 1.1.4.2 Conduct consultation with community and with health care providers in selected ASGM locations Activity 1.1.4.3 Analyze collected data and prepare recommendations Activity 1.1.4.4 Initiate the drafting of a public health strategy for the ASGM sector in collaboration with the Ministry of Health, considering the vulnerabilities of different gender groups Activity 1.1.4.5 Raise awareness on the risks to human health related to the use of mercury in the ASGM sector through workshops Activity 1.1.4.6 Develop communication materials for the health workshop taking into account the impacts of mercury on different gender groups</p> <p>*Note: Primary monitoring (i.e. human bio-monitoring) is considered out of the scope of the rapid health situation assessment and of the project. The principle objective of the rapid assessment is to identify patterns of health care seeking behavior among ASGM miners and their family members so as to determine the most effective entry point for engagement with them. For example in cases where ASGM miners do not utilize health services, promotional and awareness raising efforts may need to be conducted through mobile clinics or as part of other social mobilization efforts carried out by the health sector. The rapid health situation assessment also seeks to identify current capacities in local health centres to identify and address ASGM related health issues. This latter information is needed to inform the design and messaging of training activities to be conducted under the NAP.</p> <p>Output 2.1.1: NAP drafted and presented to relevant stakeholders for interactive feedback Activity 2.1.1.1 Draft NAP according to the national comprehensive analysis report (Output1.2) Activity 2.1.1.2 Conduct stakeholder consultation meetings Activity 2.1.1.3 Finalize draft of the NAP Activity 2.1.1.4 Define NAP implementation schedule</p> <p>Please refer to the attached logical framework in Annex C for specific outputs and their associated indicators, verifications and assumptions.</p>
<p>D. DESCRIBE, IF POSSIBLE, THE EXPECTED COST-EFFECTIVENESS OF THE PROJECT:</p>	<p>GEF resources will assist the government of Burkina Faso and partners in understanding the use of mercury and how to minimize it in the ASGM sector, as well as increase awareness of risks to human and ecosystem health. It will also assist in the broad dissemination of project achievements nationally to promote future projects. GEF resources will not only help to streamline interventions and related capacity building efforts in the ASGM sector, but also ensure that the key stakeholders involved in the compliance of Article 7 and Annex C under the Convention are sufficiently aware of and appropriately engaged in the design and delivery of the activities identified in the road map.</p> <p>To ensure cost effectiveness, infrastructure and human resources at each governmental counterpart involved in the project will be efficiently utilized. Most project activities will be carried out by national experts to the extent of possible. This will foster an increase in local and national capacity to manage mercury and will contribute to the cost effectiveness of the project</p>

	<p>through reduced consultancy fees and travel expenses.</p> <p>In overall terms, project execution is expected to remain at low risk. UNIDO has solid experience in promoting environmentally sound management of mercury in the ASGM sector and plays an important role as co-lead of the sector under the Global Mercury Partnership – the main mechanism and technical advisory group of the Minamata Convention.</p> <p>UNIDO has also extensive experience with enabling activities through the Stockholm Convention National Implementation Plans (NIPs) and NIP updates. In addition, enabling activities to implement the Stockholm Convention on Persistent Organic Pollutants (POPs) have already been developed in Burkina Faso with GEF’s resources. In the context of POPs, UNIDO is implementing the project entitled “Enabling activity for the preparation of a National Implementation Plan (NIP) on POPs for Burkina Faso”.</p> <p>Lessons learned and experience gained by UNIDO in the West Africa region through the development of mercury-related projects, as well as capacity building initiatives on POPs, are comparative advantages to the implementation of the project. The local and regional presence of UNIDO through the field offices will also help to ensure the smooth development of project activities. UNIDO is currently implementing 5 other NAPs around the world.</p> <p>The NAP will complement the country’s efforts to reduce significantly the exposure of harmful chemicals and wastes of global importance to humans and the environment.</p>
<p>E. DESCRIBE THE BUDGETED M&E PLAN:</p>	<p>Monitoring and evaluation (M&E) for this project will rely on several levels of review, quality control and feedback. Overall M&E will be conducted by UNIDO through annual supervision visits to Burkina Faso. The National Steering Group including the main project stakeholders will meet annually to: (a) review annual work plan, (b) assess progress against M&E targets as indicated in the Project Results Framework, (c) review interim and final reports, and (d) assess any gaps or weakness and make appropriate adaptive management decisions based on progress and achievements. Work plan for year two will be based on the results achieved in the first year, including associated budget allocations, in agreement with the GEF and UNIDO’s rules and guidelines, as well as GEF Council Documents GEF/C.39/09 and GEF/C.39.03/Inf.3. UNIDO’s office in Burkina Faso will assist and participate in monitoring and evaluation visits as needed.</p> <p>In order to reinforce oversight over this project, a monthly meeting will be promoted between UNIDO and the executing agency through teleconference to discuss about the status of the project, the next steps to be taken and issues that can be faced in the field. UNIDO project manager will also keep in contact with the representatives of the national governments via phone calls and emails.</p> <p>The final evaluation, to be conducted by an independent evaluator, will be arranged by UNIDO’s project manager with support from UNIDO’s Evaluation Group and reports submitted to the donor within 90 days of project end. The terms of reference for the evaluator will be developed with the support of UNIDO’s project manager under UNIDO’s guidance.</p> <p>Programmatic M&E: The executing agencies will be responsible for day-to-day management and execution of the project, reporting semi-annually to UNIDO. Progress of activities and outputs against the targets and desired outcomes will be assessed bi-annually by the executing partners using the means of verification and impact indicators for measurement explained in the Project Results Framework.</p> <p>Financial Monitoring: All project costs will be accounted for and documented. Financial reports will be required from the executing agency according to standard UNIDO accounting procedures. A terminal evaluation will be submitted to the GEF within 90 days of the project end.</p>

	<p>According to the Monitoring and Evaluation policy of the GEF and UNIDO, follow-up studies like Country Portfolio Evaluations and Thematic Evaluations can be initiated and conducted. All project partners and contractors are obliged to (a) make available studies, reports and other documentation related to the project and (b) facilitate interviews with staff involved in the project activities.</p> <p>Legal context clause: The present project is governed by the provisions of the Standard Basic Cooperation Agreement between the Government of Burkina Faso and UNIDO, signed and entered into force on 8 March 1996.</p> <p>Monitoring and Evaluation table</p> <table border="1" data-bbox="352 607 1342 1048"> <thead> <tr> <th rowspan="2">M&E activity</th> <th rowspan="2">Time</th> <th colspan="2">Budget [USD]</th> </tr> <tr> <th>GEF Grant [USD]</th> <th>Co-financing</th> </tr> </thead> <tbody> <tr> <td>Start-up workshop report*</td> <td>Within 3 months of project start</td> <td>0</td> <td>0</td> </tr> <tr> <td>Project review by NSG at the end of year 1*</td> <td>Month 12</td> <td>0</td> <td>0</td> </tr> <tr> <td>Project review by NSG at the end of the project*</td> <td>Month 24</td> <td>0</td> <td>0</td> </tr> <tr> <td>Terminal evaluation</td> <td>At project closure</td> <td>25,000</td> <td>12,000</td> </tr> <tr> <td>Total M&E cost</td> <td></td> <td>25,000</td> <td>12,000</td> </tr> <tr> <td colspan="4">*Funded by Project Management Costs</td> </tr> </tbody> </table>	M&E activity	Time	Budget [USD]		GEF Grant [USD]	Co-financing	Start-up workshop report*	Within 3 months of project start	0	0	Project review by NSG at the end of year 1*	Month 12	0	0	Project review by NSG at the end of the project*	Month 24	0	0	Terminal evaluation	At project closure	25,000	12,000	Total M&E cost		25,000	12,000	*Funded by Project Management Costs			
M&E activity	Time			Budget [USD]																											
		GEF Grant [USD]	Co-financing																												
Start-up workshop report*	Within 3 months of project start	0	0																												
Project review by NSG at the end of year 1*	Month 12	0	0																												
Project review by NSG at the end of the project*	Month 24	0	0																												
Terminal evaluation	At project closure	25,000	12,000																												
Total M&E cost		25,000	12,000																												
*Funded by Project Management Costs																															
<p>F. EXPLAIN THE DEVIATIONS FROM TYPICAL COST RANGES (WHERE APPLICABLE):</p>	<p>Not applicable.</p>																														

PART III: APPROVAL/ENDORSEMENT BY GEF OPERATIONAL FOCAL POINT(S) AND GEF AGENCY(IES)


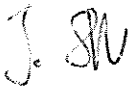
A. RECORD OF ENDORSEMENT OF GEF OPERATIONAL FOCAL POINT(S) ON BEHALF OF THE GOVERNMENT(S):
 (Please attach the *Operational Focal Point endorsement letter(s)* with this template)

NAME	POSITION	MINISTRY	DATE (Month, day, year)
Ms. Haoua SARY	Permanent secretary	NATIONAL COUNCIL FOR ENVIRONMENT AND SUSTAINABLE DEVELOPMENT	4 NOVEMBER 2016

B. CONVENTION PARTICIPATION

	DATE SIGNED (MM/DD/YYYY)	NATIONAL FOCAL POINT	DATE OF NOTIFICATION UNDER ARTICLE 7 TO THE MINAMATA CONVENTION SECRETARIAT
MINAMATA CONVENTION	10/10/2013	Madame Ouedraogo Koulibaly Watta	15 JUNE 2016

C. GEF AGENCY(IES) CERTIFICATION

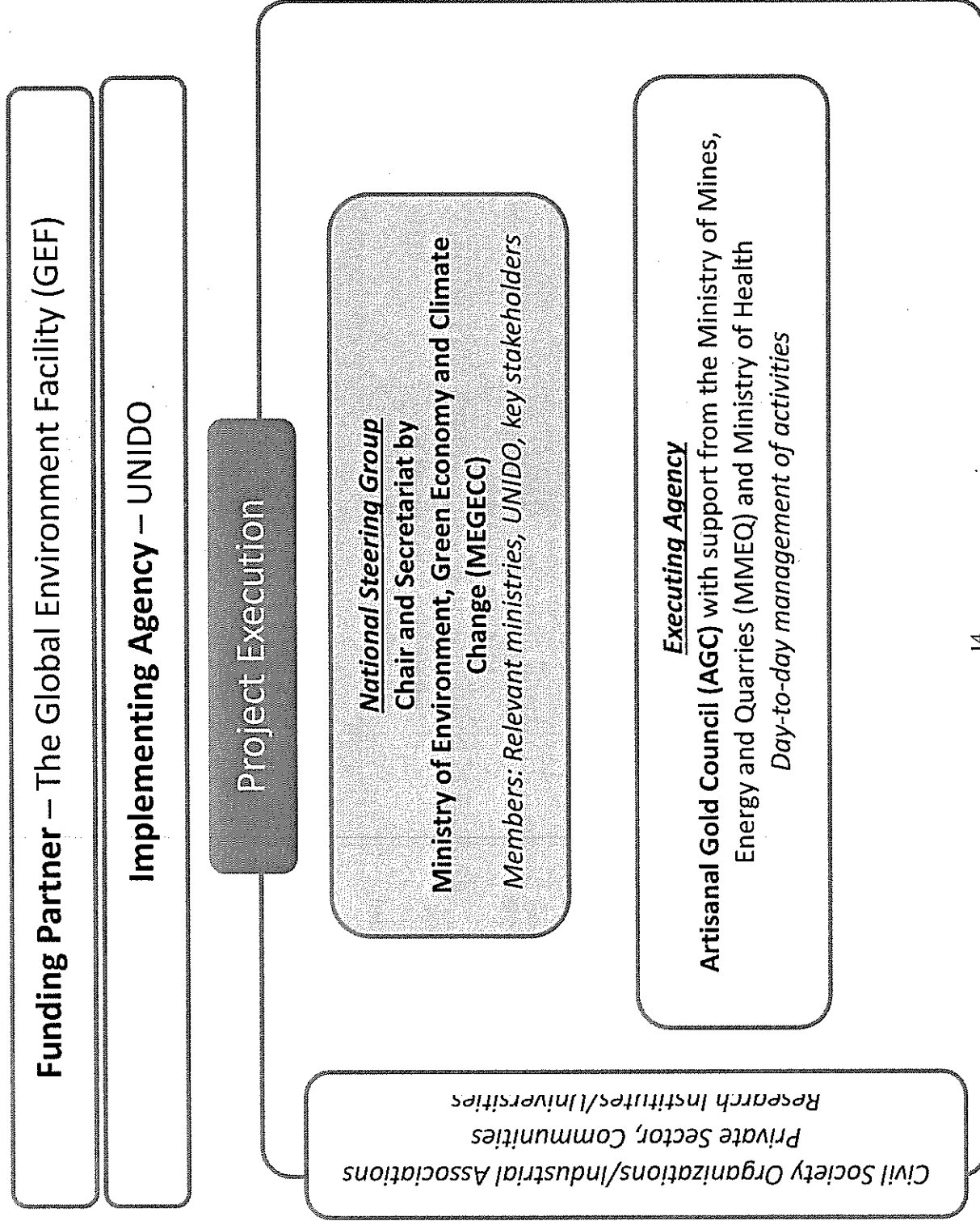
This request has been prepared in accordance with GEF policies⁴ and procedures and meets the standards of the GEF Project Review Criteria for Chemicals and Waste Enabling Activity approval in GEF 6.					
Agency Coordinator, Agency name	Signature	Date (Month, day, year)	Project Contact Person	Telephone	E-mail Address
Mr. Philippe R. Scholtès, Managing Director Programme Development and Technical Cooperation (PTC), UNIDO GEF Focal Point		12/13/2016	Mr. Jerome Stucki, Environment Department 	+43 1 260263559	J.Stucki@unido.org

⁴ GEF policies encompass all managed trust funds, namely: GEFTF, LDCF, and SCCF

ANNEX A - GEF grant and co-financing table by product

Hierarchy of objectives	GEF Grant				Co-financing				Total
	MEGECC	AGC	UNIDO	Subtotal	UNIDO	AGC	MEGECC	Subtotal	
National capacity									
Outcome 1. 1. Participatory stakeholders able to manage mercury in the ASGM sector (awareness, technical skills, expertise)	50,000	287,000	10,000	347,000	7,000	165,000	10,000	182,000	529,000
Output 1.1.1: Information disseminated and national coordination on ASGM established	50,000		10,000	60,000	7,000		10,000	17,000	77,000
Output 1.2: National comprehensive analysis of ASGM sector completed to support the development and implementation of a road map to prevent and reduce mercury use, emissions and releases		180,000		180,000		80,000		80,000	260,000
Output 1.3: Institutional capacity needs assessment completed to develop a public health strategy on ASGM		50,000		50,000		40,000		40,000	90,000
Output 1.4: Rapid health situation assessment conducted; drafting of the public health strategy initiated and awareness raising workshops organized		57,000		57,000		45,000		45,000	102,000
Outcome 2. 2. NAP drafted for the endorsement from relevant stakeholders	13,000	70,000	0	83,000	0	10,000		10,000	93,000
Output 2.1.2.1: NAP drafted and presented to relevant stakeholders for iterative feedback	13,000	70,000		83,000		10,000		10,000	93,000
Monitoring and evaluation									
Project achieves objective on time through effective monitoring and evaluation	0	0	25,000	25,000	12,000			12,000	37,000
Project management cost									
Project management cost	6,000	36,000	3,000	45,000	12,000			12,000	57,000
TOTAL PROJECT COSTS	69,000	393,000	38,000	500,000	31,000	175,000	10,000	216,000	716,000

ANNEX B: Project Execution Arrangement



ANNEX C: Project Results Framework

Results*	Indicators	Means of verification	Assumptions & Risks	Stakeholder/ Role
Objective/Impact: National capacity and capability improved for the prevention and management of mercury use, through the preparation of a National Action Plan (NAP) for the Artisanal and Small-scale Gold Mining (ASGM) sector				
Outcome 1.1: Participatory stakeholders able to manage mercury in the ASGM sector (awareness, technical skills, expertise)	<ul style="list-style-type: none"> - Number of stakeholders agreeing with the statement that they have obtained new knowledge and skills in mercury management in the ASGM sector as a result of the project 	<ul style="list-style-type: none"> - Terminal evaluation - Workshop and training reports 	<ul style="list-style-type: none"> - National counterparts and relevant stakeholders remain engaged and cooperative 	UNIDO (GEF Implementing Agency)
Output 1.1.1: Information disseminated and project coordination mechanism established	<ul style="list-style-type: none"> - Project coordination mechanism established (National Steering Group and Project Management Unit) - Frequency of National Steering Committee meetings (2 times) - Number of participatory workshops/ information sharing events (i.e. study tours, lectures, educational workshops, media brief) conducted - Percentage of women and men participants at workshops/consultations and National Steering Group - At least 1 gender-related association/ministry invited to workshops/consultations 	<ul style="list-style-type: none"> - National Steering Group meeting minutes - Terms of reference for the project coordination mechanism (i.e. function, budget, expertise) - Project progress report - Events/workshop reports - List of workshops' invitees and participants - Information/knowledge materials 	<ul style="list-style-type: none"> - The ministries will promote all the National Steering Group activities - The National Steering Group will be comprised of members from relevant entities - Sufficient resources are allocated to maintain the project coordination mechanism - The project has a strong political and civil support 	Ministry of Environment, Green Economy and Climate Change

<p>Output 1.1.2: National comprehensive analysis of ASGM sector completed to support the development and implementation of a road map to prevent and reduce mercury use, emissions and releases</p>	<ul style="list-style-type: none"> - Analysis report completed, including: <ul style="list-style-type: none"> - Number of ASGM sites with estimated number of men women and children affected by mercury - Quantities of mercury used in ASGM and processing within the country - Mercury reduction targets for the ASGM sector in percentage reduction - Number of strategies to reduce the use, emissions and releases of mercury - Road map drafted - Number of stakeholders consulted during collection of data for the completion of the national comprehensive analysis (gender disaggregated) 	<ul style="list-style-type: none"> - National comprehensive analysis document, including inventory on mercury use in the ASGM sector, mercury reduction targets and national strategies - Structured interviews, direct measurements and observations - Report describing relevant stakeholders - Project progress reports 	<ul style="list-style-type: none"> - Information on mercury use in ASGM is available - Private sector and civil society will contribute to the inventory exercise 	<p>Artisanal Gold Council</p>
--	--	--	---	--------------------------------------

<p>Output 1.1.3: Institutional capacity needs assessment completed to implement a public health strategy on ASGM</p>	<ul style="list-style-type: none"> - Institutional capacity needs Assessment drafted, including: <ul style="list-style-type: none"> - Number of institutional capacity gaps and barriers identified - Numbers of different roles of various sectors and organizations identified - Number and types of recommendations in the institutional capacity needs assessment report with a special focus on vulnerable populations, such as women workers, pregnant women, and children - Number and types of local institutions engaged as a potential partner in monitoring and evaluating the effectiveness of measures taken to address health impacts of ASGM 	<ul style="list-style-type: none"> - Institutional capacity needs assessment report - Project progress report 	<ul style="list-style-type: none"> - Information and key informants will be readily accessible <ul style="list-style-type: none"> - High level interests and engagement from representatives of key ministries and stakeholder groups 	<p>Artisanal Gold Council with support from Ministry of Health</p>
---	---	---	--	---

<p>Output 1.1.4: Rapid health situation assessment conducted; drafting of the public health strategy initiated and awareness raising workshop organized</p>	<ul style="list-style-type: none"> - Number of men and women/communities/facilities consulted - Number of health care providers consulted in ASGM affected locations; both quantitative and qualitative data on health systems capacity gaps/issues generated - Rapid assessment report completed, including recommendations with a special focus on vulnerable populations, such as women workers, pregnant women, and children - Number of awareness raising workshops conducted - Percentage of women and men participants at workshops/consultations - At least 1 gender-related association/ministry invited to workshops/consultations 	<ul style="list-style-type: none"> - Rapid assessment report with recommendations - Draft initial public health strategy - Awareness raising workshop report - List of workshops' invitees and participants - Information/knowledge materials 	<ul style="list-style-type: none"> - Health care providers, and ASGM miners and family members are knowledgeable and willing to participate in the assessment - Although engagement of healthcare providers and the healthcare system will occur, the training of health care providers and establishment of a related monitoring and reporting framework to complete the development of a public health strategy in the ASGM sector will not be included as part of this project 	<p>Artisanal Gold Council with support from Ministry of Health</p>
<p>Outcome 2.1. NAP drafted for the endorsement from relevant stakeholders</p>	<ul style="list-style-type: none"> - Acceptance of the NAP by the government 	<ul style="list-style-type: none"> - Official government record 		<p>UNIDO (GEF Implementing Agency)</p>
<p>Output 2.1.1: NAP drafted and presented to relevant stakeholders for interactive feedback</p>	<ul style="list-style-type: none"> - NAP drafted 	<ul style="list-style-type: none"> - NAP document - NAP implementation schedule - Consultation and approval meeting minutes - Progress and monitoring reports 	<ul style="list-style-type: none"> - Relevant stakeholders remain interested and engaged in the project 	<p>Ministry of Environment, Green Economy and Climate Change and Artisanal Gold Council</p>

* Note: Outcome 3 of the EA project (Monitoring and evaluation) presented under section A is not reported in the logical framework.