

GEF-8 PPG REQUEST FOR GBFF PROJECTS

TABLE OF CONTENTS

| | |
|---|-----------|
| GENERAL PROJECT INFORMATION | 3 |
| Indicative Project Overview | 4 |
| PROJECT COMPONENTS | 4 |
| PROJECT CONCEPT DESCRIPTION..... | 9 |
| Core Indicators..... | 15 |
| ANNEX A: PROJECT FINANCING TABLES | 17 |
| GEF Financing Table | 17 |
| Project Preparation Grant (PPG) | 17 |
| Sources of Funds for Country Star Allocation | 18 |
| Indicative Action Area Elements | 18 |
| Indicative Co-financing | 18 |
| ANNEX B: ENDORSEMENTS | 19 |
| GEF Agency(ies) Certification | 19 |
| Record of Endorsement of GEF Operational Focal Point (s) on Behalf of the Government(s):..... | 19 |

General Project Information

Project Title:

Empowering Indigenous Peoples for Sustainable Development: Inclusive Biodiversity Management through a Social and Solidarity Economy Approach

Region:

Suriname

GEF Project ID:

11612

Country(ies):

Suriname

Type of Project:

GBFF

GEF Agency(ies):

UNDP

GEF Agency Project ID:

9939

Anticipated Executing Entity(s):

Ministry of Regional Development and Sports

Anticipated Executing Type:

Government

GEF Focal Area (s):

Biodiversity

Submission Date:

3/30/2024

Project Sector (CCM Only)

Taxonomy

Focal Areas, Biodiversity, Stakeholders, Indigenous Peoples, Sustainable Land Management, Land Degradation, Forest, Amazon, Mainstreaming, Forestry - Including HCVF and REDD+, Biomes, Wetlands, Mangroves, Tropical Rain Forests, Protected Areas and Landscapes, Productive Landscapes, Community Based Natural Resource Mngt, Influencing models, Convene multi-stakeholder alliances, Demonstrate innovative approach, Strengthen institutional capacity and decision-making, SMEs, Private Sector, Beneficiaries, Type of Engagement, Consultation, Partnership, Information Dissemination, Participation, Communications, Education, Awareness Raising, Local Communities, Civil Society, Community Based Organization, Non-Governmental Organization, Gender Equality, Gender Mainstreaming, Women groups, Gender results areas, Knowledge Generation and Exchange, Access to benefits and services, Access and control over natural resources, Participation and leadership, Capacity Development, Capacity, Knowledge and Research, Learning, Indicators to measure change, Innovation, Knowledge Generation, Climate Change, Climate Change Mitigation, Agriculture, Forestry, and Other Land Use, Community-Based Natural Resource Management, Income Generating Activities, Sustainable Livelihoods

Type of Trust Fund:

GBFF

Project Duration (Months)

36

GEF Project Financing: (a)

1,009,361.00

GEF Project Non-Grant: (b)

0.00

Agency Fee(s) Grant: (c)

95,889.00

Agency Fee(s) Non-Grant: (d)

0.00

Total GEF Financing: (a+b+c+d)

1,105,250.00

Total Co-financing:

0.00

| | |
|--|--|
| PPG Amount: (e) 50,000.00 | PPG Agency Fee(s): (f) 4,750.00 |
| PPG total Amount: (e+f) 54,750.00 | Total GEF Resources: (a+b+c+d+e+f) 1,160,000.00 |
| Project Tags: GBF Target 1, Support IPLC, GBF Target 2, GBF Target 3, GBF Target 22 | |

Indicative Project Overview

Empower indigenous peoples and local communities (IPLCs) in Suriname's rural districts and interior regions to sustainably manage their lands, territories, and resources, promoting biodiversity management, social inclusion, and sustainable development through social and solidarity economy (SESE) principles and strengthened organizational capacity, governance structures, and policy frameworks.

Project Components

1. Strengthening Community Empowerment and Governance for Sustainable Land Management, Biodiversity Conservation, and Sustainable Use.

| | |
|--|-------------------|
| Component Type | Trust Fund |
| Technical Assistance | GBFF |
| GEF Project Financing (\$) 375,000.00 | Co-financing (\$) |

Project Outcomes:

1. IPLCs empowered for enhanced biodiversity conservation and land management and for integrating IPLC rights and perspectives into national policies and regulations as measured by:

-72,070 ha of Community Forest Management Areas under improved management (Core indicator 4.1)

-Number of policies and commitments that comply with IPLC rights and environmental conservation objectives, including the integration of biodiversity considerations into spatial plans

-Level of increase in governance capacities among IPLC leaders and organizations, as well as level of increase in number of indigenous women and marginalized groups in governance roles

- Level of increase in capacity of local authorities on biodiversity management, participatory decision-making processes, and biodiversity inclusive spatial planning.

(Targets will be confirmed during the PPG phase).

Project Outputs:

1.1. IPLC and local authority organizational and individual capacities and skills strengthened through:

- a) Training program for IPLC women, marginalized stakeholders, and leaders on effective governance, organizational, and individual practices.

- b) Training program for local authorities on biodiversity management, participatory decision-making processes, and biodiversity inclusive spatial planning.

1.2. IPLC Multi-stakeholder committee/platform established and or supported to advise on:

- a) The expansion and/or improved management of Community Forest Management Areas.

- b) Strategies for integrating IPLC rights and perspectives into national policies and regulations.

1.3. Program to revitalize and strengthen IPLC traditional governance systems contributes to:

- a) Promote traditional livelihood practices for the benefit of IPLCs

 - b) Foster dialogues between IPLCs and other key stakeholders.

 - c) Production (oral or written) of educational materials in local IPLC languages
-

d) Document and promote indigenous customary laws and practices.

2. Promoting sustainable systems and livelihoods for Integrated land management, biodiversity conservation, and sustainable use

| | |
|----------------------------|-------------------|
| Component Type | Trust Fund |
| Technical Assistance | GBFF |
| GEF Project Financing (\$) | Co-financing (\$) |
| 342,468.00 | |

Project Outcomes:

2. Sustainable agroforestry practices implemented and improved market access for biodiversity-friendly products, revitalizing Indigenous Systems and promoting sustainable livelihoods, as

measured by:

- 11,000 hectares of High Conservation Value Forests under improved practices (Core Indicator 4.4).

-Number of community members trained in sustainable cultivation and harvesting techniques.

-Number of community-owned processing facilities established for sustainably produced products.

-Number of products branded and packaged for marketability.

(Targets to be determined during the PPG phase)

Project Outputs:

2.1. Production, market, and value chain development for biodiversity-friendly products, incorporating indigenous knowledge with modern approaches. The products will likely include honey production from stingless bees, highland rice, palms products and nuts.

2.2. Cooperatives or producer associations established, and distribution networks developed as well as partnerships with organizations.

2.3. Market research conducted, and partnerships formed with potential buyers and private sector entities.

3. Fostering partnerships and collaborative Initiatives for sustainable land management and biodiversity conservation

| | |
|----------------------------|-------------------|
| Component Type | Trust Fund |
| Technical Assistance | GBFF |
| GEF Project Financing (\$) | Co-financing (\$) |
| 149,665.00 | |

Project Outcomes:

3. Collaboration among IPLCs, governmental agencies, NGOs, private sector entities, and other stakeholders enhanced to facilitate knowledge exchange, technology transfer, and mutually beneficial partnerships for biodiversity conservation and sustainable development, as measured by:

-Number of collaborative initiatives established involving IPLCs for biodiversity conservation and sustainable development.

- Number of knowledge exchange events organized.

-Number of technology transfer programs (South-South) implemented.

(Targets to be determined during the PPG phase)

Project Outputs:

3.1. Program of work between IPLCs, government agencies, NGOs, private sector entities and other stakeholders developed to identify and implement collaborative initiatives, knowledge exchange events, and joint projects that contribute to biodiversity conservation and sustainable development.

3.2. South-South

technology transfer program developed and implemented between IPLCs, governmental agencies, NGOs, private sector entities, and other stakeholders.

M&E

| | |
|----------------------------|-------------------|
| Component Type | Trust Fund |
| Technical Assistance | GBFF |
| GEF Project Financing (\$) | Co-financing (\$) |
| 50,468.00 | |

Project Outcomes:

4. Project performance and progress towards defined identified goals and objectives is monitored and evaluated using agreed systems and protocols.

Project Outputs:

4.1 Annual Project Implementation Reviews (PIRs), Terminal Evaluation and measures for adaptive management.

Component Balances

| Project Components | GEF Project Financing (\$) | Co-financing (\$) |
|--|----------------------------|-------------------|
| 1. Strengthening Community Empowerment and Governance for Sustainable Land Management, Biodiversity Conservation, and Sustainable Use. | 375,000.00 | |
| 2. Promoting sustainable systems and livelihoods for Integrated land management, biodiversity conservation, and sustainable use | 342,468.00 | |
| 3. Fostering partnerships and collaborative Initiatives for sustainable land management and biodiversity conservation | 149,665.00 | |
| M&E | 50,468.00 | |
| Subtotal | 917,601.00 | 0.00 |
| Project Management Cost (PMC) | 91,760.00 | |
| Total Project Cost (\$) | 1,009,361.00 | 0.00 |

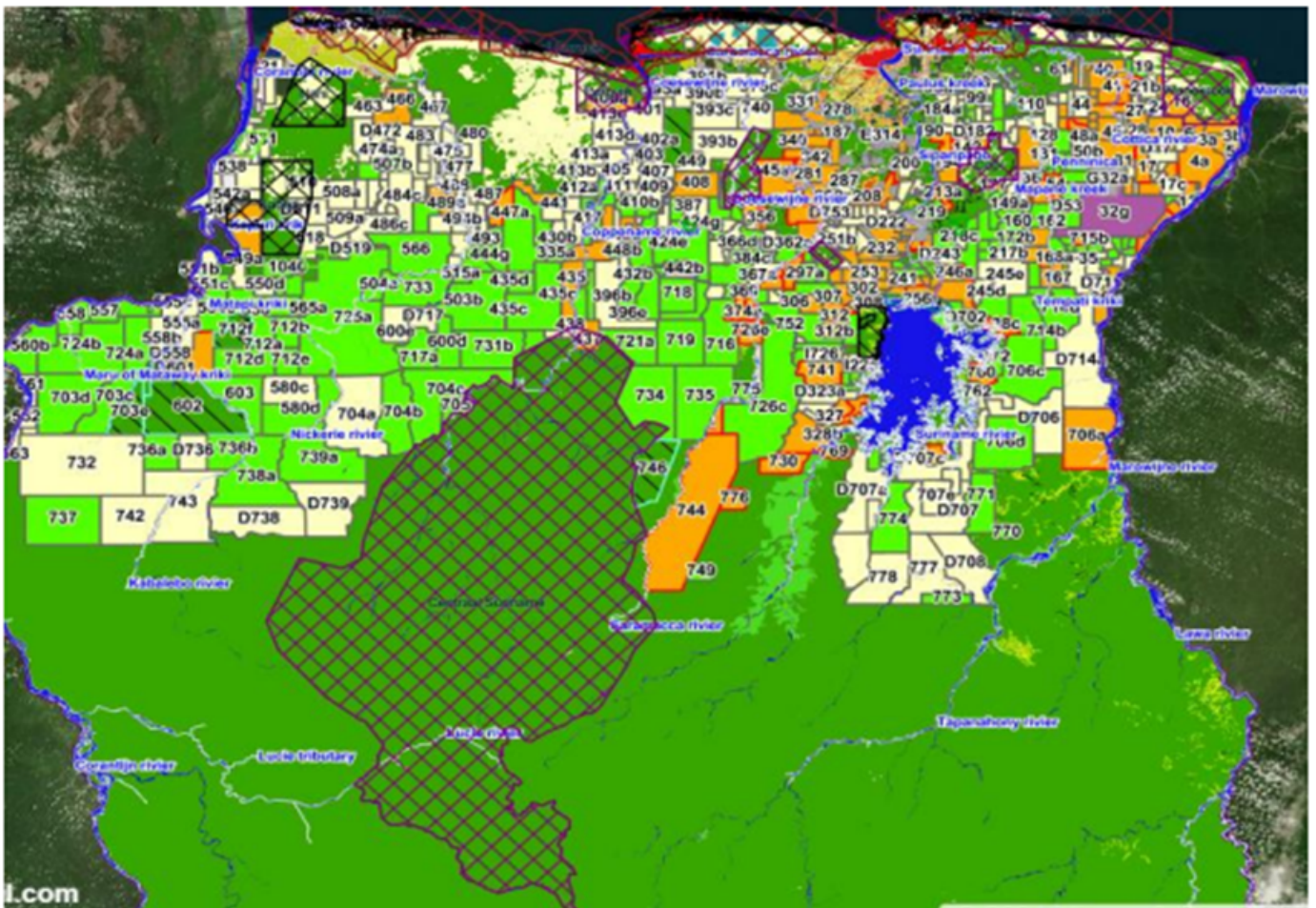
Please provide justification

PROJECT CONCEPT DESCRIPTION

Project Concept Description (No more than seven pages total, including 5 pages of text maximum. Concepts longer than 7 pages will be returned. Please note the portal entry will be limited to up to 19,400 characters of text and up to two figures.)

Project Rationale:

Suriname's deep rural districts and interior regions face challenges of deforestation driven by timber and gold extraction, insufficient environmental management, and limited economic opportunities beyond extractive industries for the local population, primarily comprising IPLCs. A total of 826,000 hectares has been allocated to Community Forest Management Areas (CFMAs)^[11], of which 123 CFMAs have been assigned to tribal communities, and 29 allocated to indigenous peoples (see map 1)

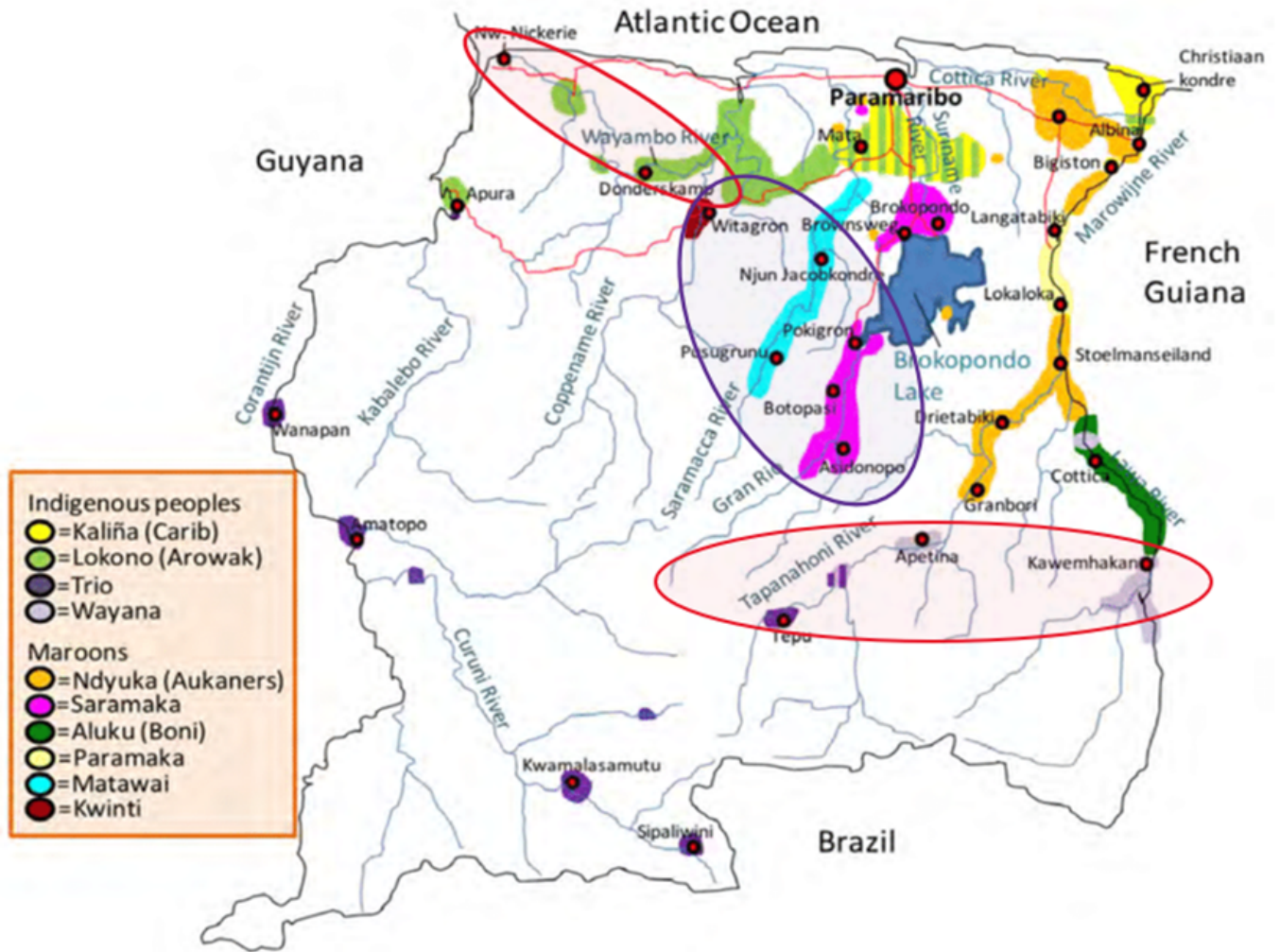


The allocation of CFMAs, including the High Conservation Value (HCV) areas, is primarily aimed to enable indigenous and tribal communities to meet their own timber needs (see list Annex 2 and 3). The National Forest Policy of Suriname (2005) explicitly incorporates provisions within the Forest Management Law, allowing for the communities' generation of income through agricultural activities, collection of non-timber forest products, and (commercial) timber utilization within the community forests. However, it stipulates that the revenues generated from these activities must be reinvested back into the community. IPLCs are facing challenges associated with unplanned logging activities and other issues within their community forests. Additionally, some of these communities lack awareness regarding the annual production figures of their community forests and the existence of the Sustainable Forestry Information System Suriname (SFISS) managed by the Foundation for Forest Management and Forest Inspection (SBB) with the primary objective of promoting planned logging and sustainable forest management. For their daily sustenance, IPLCs rely on the goods and services provided by the forest. Therefore, the promotion of the Social and Solidarity Economy (SSE) stands as a pivotal initiative, aligning biodiversity and cultural preservation, social inclusion, and sustainable development. The success of initiatives like the Cerrado Cooperative (CoopCerrado) in Brazil underscores the transformative potential inherent in community-based resource management and collective marketing endeavors. ^[2] Drawing inspiration from such models, this proposal aims to replicate and adapt similar strategies in Suriname's IPLC communities.

Goal and objectives:

The goal of this project is to empower indigenous peoples and local communities (IPLCs) in Suriname's deep rural districts and interior regions to sustainably manage their lands, territories, and resources while ensuring the conservation of traditional knowledge and sustainable use of biodiversity. The objectives of the project are to strengthen IPLC community empowerment and governance structures; promote sustainable agroforestry practices; and foster partnerships and collaborative initiatives for sustainable land management and biodiversity conservation.

The project will target as per map 2 below; identified as Wayambo river area, the indigenous communities in the Upper Coppename region, namely Donderkamp and Corneliskondre, as well as communities in Lower Nickerie, specifically Tapoeripa and Cupido. Additionally, this area also encompasses Kalebaskreek in Saramacca. These communities collectively oversee approximately 42,550 hectares of registered Community Forest Management Areas (CFMAs). The project will also target Tapanahony river area communities in Southeast Suriname such as Tepu, Apetina, and Kawemhakan. Moreover, the project will extend its reach to tribal communities including Witagron, Njun Jacobkondre, Pokigron, Pusugrunu, and Botopasi, primarily situated in the Upper Suriname region, managing approximately 29,520 hectares of CFMAs. The selection of communities will undergo a meticulous process during the project design phase, with decision-making guided by Indigenous Peoples and Local Community (IPLC) organizations adhering to the principles of Free, Prior, and Informed Consent (FPIC). The selected communities comprise a total population of 3,619 individuals, consisting of 1,906 males and 1,713 females.



Selected Areas/Villages:

Indigenous villages: circled with red lines.

Tribal villages: circled with purple lines.

Map 2. Selected Areas/Communities, Source: ResearchGate

This project complements the GEF funded projects supporting sustainable livelihoods of Indigenous and Tribal Peoples as well as Global Environmental Benefits, namely the “Strengthening management of protected and productive landscapes in the Surinamese Amazon” Amazon Sustainable Landscapes 2 project (ASL2), which concentrates on the two major landscapes of the Surinamese Amazon biome (the Saamaka-Matawai and the Coeroeni-Paroe landscapes) and the Suriname ASL3 project, which will focus on West Suriname’s forest area. It also builds on the experiences and results of developing an integrated and participatory policy framework and guidelines for the Indigenous and tribal peoples in Suriname under the SDG Joint Fund (JF) funded Joint Programme Leave No One Behind (JP LNOB).

The communities of Witagron, Njun Jacobkondre, Pokigron, Pusugrunu, and Botopasi overlap with the landscapes of ASL2 and ASL3, however, during PPG design phase it will be ensured that activities are complementary and do not duplicate and that there is no double counting in terms of the Global Environmental Benefits.

This project will contribute to the delivery of global environmental benefits (GEBs) in biodiversity resulting from conservation of globally significant biodiversity and sustainable use of the components of globally significant biodiversity. This project also contributes to GEB in land degradation through improved provision of agro-ecosystem and forest ecosystem goods and services and mitigated/avoided greenhouse gas emissions and increased carbon sequestration in production landscapes, and Conservation and sustainable use of biodiversity in productive landscapes.

GEF TF Core Indicators (CI):

- CI 4 and CI 6: By implementing improved practices in landscapes (excluding protected areas) and reducing the loss of High-Conservation Value forests, the project strives to enhance ecosystem resilience and biodiversity conservation efforts and mitigate greenhouse gas emissions.

1. Project Description:

a. Theory of Change:

IF indigenous peoples and local communities (IPLCs) in Suriname's rural districts and deep interior regions are empowered with the necessary skills, knowledge, and resources as well as enhanced governance structures to sustainably manage their lands, territories, and resources, IF inclusive decision-making processes are implemented with the integration of IPLC rights and perspectives into national policies and regulations and IF greater collaboration between all stakeholders is achieved, then IPLCs will be better equipped to promote inclusive biodiversity management, social inclusion, and sustainable development through the implementation of Social and Solidarity Economy (SSE) principles.

This theory of change outlines the pathway through which the project aims to achieve its objective of preserving biodiversity and cultural heritage in Suriname through the empowerment of IPLCs for management and sustainable development. It underscores the importance of collaborative efforts, community engagement, and capacity building for long-term success.

Assumptions: Willingness to collaborate among key stakeholders, provision of technical and financial support, community engagement, gender-sensitive policy design, and potential for scaling up are key assumptions underpinning this Theory of Change.

a. Expected Change:

Through targeted interventions, significant changes will be achieved within Indigenous Peoples and Local Communities (IPLCs):

- IPLCs will be equipped with enhanced skills, knowledge, and resources essential for sustainably managing their lands and resources, consequently fostering improved economic opportunities, and contributing to poverty alleviation.
- Governance structures and capacities at local, regional, and national levels will be strengthened, facilitating inclusive decision-making processes, and enhancing community resilience.
- Traditional governance systems will be revitalized, incorporating modern tools and approaches while preserving indigenous customary laws and practices for sustainable land and resource management.
- IPLC rights and perspectives will receive increased recognition in national policies and regulations, resulting in the development of more equitable and sustainable governance frameworks.
- Local authorities and community leadership will be strengthened through capacity-building initiatives and the integration of traditional knowledge into biodiversity management plans.
- Collaboration among stakeholders will be enhanced, facilitating knowledge exchange, technology transfer, and improved market access for IPLCs.
- Infrastructure for processing, storage, and market access will be improved for biodiversity-friendly products, thereby enhancing the competitiveness of IPLC products in the market.
- Lastly, an effective and sustainable exit strategy will be established to ensure the long-term impact and viability of interventions, extending beyond the project's duration.

b. Key Components of the Proposal:

The project is aimed at achieving the following Outcomes:

1. Empowered IPLCs and enhanced governance and policy influence: Enhanced organizational and individual capacities within Indigenous Peoples and Local Communities (IPLCs), resulting in improved skills, knowledge, and abilities for sustainable land and resource management. The project endeavors to address Core Indicator 4 by implementing enhanced practices in landscapes, as, aimed at bolstering ecosystem resilience and furthering biodiversity conservation efforts. Strengthened governance structures and capacities at various levels (local, regional, and national levels), fostering inclusive decision-making processes and active participation of women, and the integration of IPLC rights and perspectives into national policies and regulations on land tenure, natural resource management, and conservation, leading to more equitable and sustainable governance frameworks.
2. Sustainable agroforestry practices implemented and improved market access for biodiversity-friendly products, revitalizing Indigenous Systems and promoting sustainable livelihoods: Enhanced traditional governance systems will be integrated with modern approaches, promoting the preservation and adaptation of indigenous traditional knowledge, customary laws and practices for sustainable land management while improving livelihood opportunities through sustainable farming practices, including agroforestry, and enhanced market access, contributing to economic resilience and poverty alleviation.
3. Established partnerships and collaboration: Enhanced collaboration among IPLCs, government agencies, NGOs, private sector entities, and other stakeholders will be fostered, facilitating knowledge exchange, technology transfer, and mutually beneficial partnerships for conservation and sustainable development.

4. **Monitoring and Evaluation:** A robust monitoring and evaluation system will be implemented to track progress, measure impacts, and ensure continuous improvement, enabling evidence-based decision-making and accountability. Under the M&E plan, UNDP will implement the Social and Environmental Screening Procedure (SESP) during the PPG phase, drawing on past experiences with ASL3 PPG, ASL2, GOLD+ project, and SDG Joint Programmes on Sustainable Financing and Leave No One Behind. Gender Strategy and Action Plan development in this phase will address gender equality needs and opportunities while mitigating potential adverse project effects, aligning with national commitments. Gender-responsive assessments will inform field-based initiatives, promoting women's leadership and economic empowerment. Community engagement will prioritize Indigenous Peoples and Local Communities (IPLC) participation, adhering to Free, Prior and Informed Consent (FPIC) principles and respecting IPLC rights and culture to foster community ownership and autonomy.

c. **Key Stakeholders:**

Key stakeholders of the project are:

- **IPLC Communities:** Primary beneficiaries and participants in the programme. Through their representation organization, the indigenous people's association (VIDS) and the maroon association (KAMPOS), the communities have engaged actively in the ongoing Joint Programme- Leave No One Behind and the Amazon Sustainable Landscapes (ASL) 2 project and are members of the Project Board. The ASL project is also facilitating partnerships with the logging and tourism industries. VIDS and KAMPOS are currently also closely involved in the design of the ASL3 project. Their participation in this project will also be ensured, following all FPIC requirements.
- **Government Ministries/Agencies:** The Ministry of Regional Development and Sport (MROS) is tasked with the sustainable development of the interior in general, but also of the Indigenous and tribal peoples for which dedicated directorates are in place. Successful execution of policies and measures should not be dependent only on the efforts of MROS but must be complemented by collaborative intersectoral policies with other ministries, such as the Ministry of Environment and Spatial Planning, Ministry of Land Policy and Forest Management, and Ministry of Economic Affairs, Entrepreneurship, and Technological Innovation.
- **Local authorities:** Local authorities (District Commissioners, Resort leaders etc.) will be fully engaged in project activities.
- **NGOs and Development Partners:** Will provide technical expertise and funding.
- **Private Sector:** Will engage in market linkages and value-added product development.

d. **Specific Action Area**

This project aligns with Action Area Two: Support to Indigenous Peoples and Local Communities (IPLC) Stewardship and Governance of Lands, Territories, and Waters, targeting specific objectives outlined in the Global Biodiversity Framework Targets 1 and 22.

Potential Additional Indicators for GBF Fund:

- **Area (hectares) of land and seas covered by biodiversity-inclusive spatial plans:** The project endeavors to expand the coverage of areas under spatial plans that incorporate biodiversity considerations, ensuring the sustainable management of natural resources.
- **Services provided by ecosystems:** By fostering the sustainable management of ecosystems, the project aims to enhance the delivery of ecosystem services essential for human well-being and biodiversity conservation.

Through these concerted efforts, the project aims to significantly contribute to the overarching goals of biodiversity conservation, sustainable land and resource management, and the empowerment of IPLCs in

decision-making processes. The project concept is fully aligned with Suriname’s NBSAP and other relevant policies. Policy coherence among multiple sectors and stakeholders will be promoted in the project design and during implementation. During the PPG stage, the design team will identify possible opportunities to mobilize resources from the private sector and philanthropy.

Throughout the Project Preparation Grant (PPG) phase and project execution, Indigenous Peoples and Local Communities (IPLCs) will actively engage via their representative umbrella organizations. IPLCs will hold positions within the project's governance structure and participate as beneficiary representatives in both the Steering Committee and technical working groups. Capacity strengthening initiatives will target IPLC organizations as well as individual communities, promoting comprehensive skill development, sustainable practices such as agroforestry and strengthened value chains. Financial support will be allocated to IPLC umbrella organizations to facilitate the execution of the community empowerment component within the project framework.

[1] Background study conducted by REDD+ Suriname, 2019

[2] <https://unric.org/pt/cooperativa-do-cerrado-ganha-premio-da-onu-com-iniciativa-sobre-biodiversidade/>

Core Indicators

Indicator 4 Area of landscapes under improved practices (hectares; excluding protected areas)

| Ha (Expected at PIF) | Ha (Expected at CEO Endorsement) | Ha (Achieved at MTR) | Ha (Achieved at TE) |
|----------------------|----------------------------------|----------------------|---------------------|
| 83070 | 0 | 0 | 0 |

Indicator 4.1 Area of landscapes under improved management to benefit biodiversity (hectares, qualitative assessment, non-certified)

| Ha (Expected at PIF) | Ha (Expected at CEO Endorsement) | Ha (Achieved at MTR) | Ha (Achieved at TE) |
|----------------------|----------------------------------|----------------------|---------------------|
| 72,070.00 | | | |

Indicator 4.2 Area of landscapes under third-party certification incorporating biodiversity considerations

| Ha (Expected at PIF) | Ha (Expected at CEO Endorsement) | Ha (Achieved at MTR) | Ha (Achieved at TE) |
|----------------------|----------------------------------|----------------------|---------------------|
| | | | |

Type/Name of Third Party Certification

Indicator 4.3 Area of landscapes under sustainable land management in production systems

| Ha (Expected at PIF) | Ha (Expected at CEO Endorsement) | Ha (Achieved at MTR) | Ha (Achieved at TE) |
|----------------------|----------------------------------|----------------------|---------------------|
| | | | |

Indicator 4.4 Area of High Conservation Value or other forest loss avoided

| Disaggregation Type | Ha (Expected at PIF) | Ha (Expected at CEO Endorsement) | Ha (Achieved at MTR) | Ha (Achieved at TE) |
|--------------------------------|----------------------|----------------------------------|----------------------|---------------------|
| High Conservation Value Forest | 11,000.00 | | | |

Indicator 4.5 Terrestrial OECMs supported

| Name of the OECMs | WDPA-ID | Total Ha (Expected at PIF) | Total Ha (Expected at CEO Endorsement) | Total Ha (Achieved at MTR) | Total Ha (Achieved at TE) |
|-------------------|---------|----------------------------|--|----------------------------|---------------------------|
| | | | | | |

Documents (Document(s) that justifies the HCVF)

| Title |
|-------|
| |

Indicator 6 Greenhouse Gas Emissions Mitigated

| Total Target Benefit | (At PIF) | (At CEO Endorsement) | (Achieved at MTR) | (Achieved at TE) |
|---|----------|----------------------|-------------------|------------------|
| Expected metric tons of CO₂e (direct) | 46685.1 | 0 | 0 | 0 |
| Expected metric tons of CO₂e (indirect) | 0 | 0 | 0 | 0 |

Indicator 6.1 Carbon Sequestered or Emissions Avoided in the AFOLU (Agriculture, Forestry and Other Land Use) sector

| Total Target Benefit | (At PIF) | (At CEO Endorsement) | (Achieved at MTR) | (Achieved at TE) |
|---|----------|----------------------|-------------------|------------------|
| Expected metric tons of CO₂e (direct) | 46,685.1 | | | |
| Expected metric tons of CO₂e (indirect) | | | | |
| Anticipated start year of accounting | 2025 | | | |
| Duration of accounting | 25 | | | |

Indicator 6.2 Emissions Avoided Outside AFOLU (Agriculture, Forestry and Other Land Use) Sector

| Total Target Benefit | (At PIF) | (At CEO Endorsement) | (Achieved at MTR) | (Achieved at TE) |
|---|----------|----------------------|-------------------|------------------|
| Expected metric tons of CO₂e (direct) | | | | |
| Expected metric tons of CO₂e (indirect) | | | | |
| Anticipated start year of accounting | | | | |
| Duration of accounting | | | | |

Indicator 6.3 Energy Saved (Use this sub-indicator in addition to the sub-indicator 6.2 if applicable)

| Total Target Benefit | Energy (MJ) (At PIF) | Energy (MJ) (At CEO Endorsement) | Energy (MJ) (Achieved at MTR) | Energy (MJ) (Achieved at TE) |
|---------------------------------|----------------------|----------------------------------|-------------------------------|------------------------------|
| Target Energy Saved (MJ) | | | | |

Indicator 6.4 Increase in Installed Renewable Energy Capacity per Technology (Use this sub-indicator in addition to the sub-indicator 6.2 if applicable)

| Technology | Capacity (MW) (Expected at PIF) | Capacity (MW) (Expected at CEO Endorsement) | Capacity (MW) (Achieved at MTR) | Capacity (MW) (Achieved at TE) |
|------------|---------------------------------|---|---------------------------------|--------------------------------|
| | | | | |

Indicator 11 People benefiting from GEF-financed investments

| | Number (Expected at PIF) | Number (Expected at CEO Endorsement) | Number (Achieved at MTR) | Number (Achieved at TE) |
|---------------|--------------------------|--------------------------------------|--------------------------|-------------------------|
| Female | 1,713 | | | |
| Male | 1,906 | | | |
| Total | 3,619 | 0 | 0 | 0 |

Explain the methodological approach and underlying logic to justify target levels for Core and Sub-Indicators (max. 250 words, approximately 1/2 page)

ANNEX A: PROJECT FINANCING TABLES

GEF Financing Table

Indicative Trust Fund Resources Requested by Agency(ies), Country(ies), Focal Area and the Programming of Funds

| GEF Agency | Trust Fund | Country/ Regional/ Global | Focal Area | Programming of Funds | GEF Project Grant(\$) | Agency Fee(\$) | Total GEF Financing (\$) |
|---------------------------------|------------|---------------------------------|--------------|-------------------------|--------------------------|-------------------|-----------------------------|
| UNDP | GBFF | Suriname | Biodiversity | GBFF Action Area 2 | 1,009,361.00 | 95,889.00 | 1,105,250.00 |
| Total GEF Resources (\$) | | | | | 1,009,361.00 | 95,889.00 | 1,105,250.00 |

Project Preparation Grant (PPG)

Is Project Preparation Grant requested?

true

PPG Amount (\$)

50000

PPG Agency Fee (\$)

4750

| GEF Agency | Trust Fund | Country/ Regional/ Global | Focal Area | Programming of Funds | Grant / Non- Grant | PPG (\$) | Agency Fee(\$) | Total PPG Funding(\$) |
|------------|------------|---------------------------------|--------------|-------------------------|-----------------------|-----------|-------------------|--------------------------|
| UNDP | GBFF | Suriname | Biodiversity | GBFF Action Area 2 | Grant | 50,000.00 | 4,750.00 | 54,750.00 |

| | | | | |
|-----------------------|--|-----------|----------|-----------|
| Total PPG Amount (\$) | | 50,000.00 | 4,750.00 | 54,750.00 |
|-----------------------|--|-----------|----------|-----------|

Please provide justification

Sources of Funds for Country Star Allocation

(Only for Multi-Trust Fund projects where GEF TF is included)

| GEF Agency | Trust Fund | Country/ Regional/ Global | Focal Area | Sources of Funds | Total(\$) |
|----------------------------|------------|------------------------------|------------|------------------|-------------|
| Total GEF Resources | | | | | 0.00 |

Indicative Action Area Elements

| Programming Directions | Trust Fund | GEF Project Financing(\$) | Co-financing(\$) |
|---------------------------|------------|---------------------------|------------------|
| GBFF Action Area 2 | GBFF | 1,009,361.00 | |
| Total Project Cost | | 1,009,361.00 | 0.00 |

Amount of resource allocated to support actions by IPLCs for the conservation, restoration, sustainable use and management of biodiversity:

Amount

400,000.00

Indicative Co-financing

| Sources of Co-financing | Name of Co-financier | Type of Co-financing | Investment Mobilized | Amount(\$) |
|---------------------------|----------------------|----------------------|----------------------|-------------|
| Total Co-financing | | | | 0.00 |

Describe how any "Investment Mobilized" was identified

ANNEX B: ENDORSEMENTS

GEF Agency(ies) Certification

| GEF Agency Type | Name | Date | Project Contact Person | Phone | Email |
|------------------------|------|-----------|--|-------|----------------------------|
| GEF Agency Coordinator | UNDP | 3/22/2024 | Nancy Bennet | | nancy.bennet@undp.org |
| Project Coordinator | UNDP | 3/22/2024 | Alexandra Fischer, Senior Regional Technical Advisor | | alexandra.fischer@undp.org |

Record of Endorsement of GEF Operational Focal Point (s) on Behalf of the Government(s):

| Name | Position | Ministry | Date (MM/DD/YYYY) |
|-----------------------|--|--|-------------------|
| Ms. Vanuessa Gefferie | Permanent Secretary for General and Financial Affairs / Operational Focal Point for Suriname | Ministry of Spatial Planning and Environment | 3/28/2024 |