



Transforming and scaling up results and lessons learned in the Monte Alen and Rio Campo Landscapes through an inclusive Landscape-scale approach, effective land use planning and promotion of local governance

Part I: Project Information

Name of Parent Program

The Congo Basin Sustainable Landscapes Impact Program (CBSL IP)

GEF ID

10293

Project Type

FSP

Type of Trust Fund

GET

CBIT/NGI

CBIT

NGI

Project Title

Transforming and scaling up results and lessons learned in the Monte Alen and Rio Campo Landscapes through an inclusive Landscape-scale approach, effective land use planning and promotion of local governance

Countries

Equatorial Guinea

Agency(ies)

IUCN

Other Executing Partner(s)

IUCN, INDEFOR-AP, INCOMA

Executing Partner Type

Government

GEF Focal Area

Multi Focal Area

Taxonomy

Focal Areas, Climate Change, Climate Change Mitigation, Agriculture, Forestry, and Other Land Use, Climate Change Adaptation, Livelihoods, Climate resilience, Ecosystem-based Adaptation, Biodiversity, Species, Wildlife for Sustainable Development, Threatened Species, Illegal Wildlife Trade, Mainstreaming, Agriculture and agrobiodiversity, Tourism, Infrastructure, Biomes, Tropical Rain Forests, Mangroves, Protected Areas and Landscapes, Coastal and Marine Protected Areas, Community Based Natural Resource Mngt, Terrestrial Protected Areas, Forest, Congo, Land Degradation, Sustainable Land Management, Ecosystem Approach, Income Generating Activities, Integrated and Cross-sectoral approach, Community-Based Natural Resource Management, Sustainable Forest, Influencing models, Strengthen institutional capacity and decision-making, Transform policy and regulatory environments, Demonstrate innovative approach, Stakeholders, Communications, Awareness Raising, Behavior change, Public Campaigns, Education, Private Sector, SMEs, Individuals/Entrepreneurs, Local Communities, Type of Engagement, Partnership, Participation, Consultation, Information Dissemination, Beneficiaries, Civil Society, Community Based Organization, Non-Governmental Organization, Integrated Programs, Food Systems, Land Use and Restoration, Comprehensive Land Use Planning, Integrated Landscapes, Capacity, Knowledge and Research, Targeted Research, Learning, Indicators to measure change, Adaptive management, Theory of change, Capacity Development, Knowledge Exchange

Rio Markers**Climate Change Mitigation**

Climate Change Mitigation 2

Climate Change Adaptation

Climate Change Adaptation 1

Submission Date

6/26/2019

Expected Implementation Start

6/1/2021

Expected Completion Date

6/30/2025

Duration

48In Months

Agency Fee(\$)

481,913.00

A. FOCAL/NON-FOCAL AREA ELEMENTS

Objectives/Programs	Focal Area Outcomes	Trust Fund	GEF Amount(\$)	Co-Fin Amount(\$)
IP SFM Congo	Promoting effective Coordination for Sustainable Forest Management	GET	5,354,587.00	32,450,000.00
Total Project Cost(\$)			5,354,587.00	32,450,000.00

B. Project description summary

Project Objective

To conserve and sustainably manage biodiversity and forest ecosystems in the Monte Alen and Rio Campo landscapes in Equatorial Guinea through an inclusive landscape approach, effective land use planning, enhanced management of protected areas and the promotion of local governance and sustainable livelihood options

Project Component	Financing Type	Expected Outcomes	Expected Outputs	Trust Fund	GEF Project Financing(\$)	Confirmed Co-Financing(\$)
--------------------------	-----------------------	--------------------------	-------------------------	-------------------	----------------------------------	-----------------------------------

Project Component	Financing Type	Expected Outcomes	Expected Outputs	Trust Fund	GEF Project Financing(\$)	Confirmed Co-Financing(\$)
1. Integrated and improved land use planning, policies, and management	Technical Assistance	<p>1.1. Enhanced cooperation and planning at national level, governing the use of transboundary resources and landscapes</p> <p>1.2. Ensure that protected areas, natural capital and forest dependant people's rights are taken into account in the land use planning processes and decisions at local and landscape levels</p> <p>1.3. Development and uptake of integrated land use management plans in the Rio Campo and Monte Alen landscapes, with the full participation of local stakeholders, to support the sustainable management and ecological integrity of these landscapes</p>	<p>1.1.1. Cross-border multi-stakeholder dialogues on sustainable land use planning and policy issues with transboundary dimensions (e.g., illegal poaching and logging; infrastructure development; connectivity; legal extractives; water)</p> <p>1.2.1. Technical inputs to support the development of improved land use policies, including incorporating natural capital in such policies</p> <p>1.2.2. Capacity building program strengthening the ability of relevant government personnel at local and provincial levels to incorporate natural capital and forest dependant people's land rights into land use planning, and management;</p>	GET	1,319,040.00	8,640,000.00

Project Component	Financing Type	Expected Outcomes	Expected Outputs	Trust Fund	GEF Project Financing(\$)	Confirmed Co-Financing(\$)
2. Ensuring the long-term viability of forests providing important habitat to endangered species and critical ecosystem services	Investment	2.1. Improved management of natural resources and PAs within the Rio Campo and Monte Alen landscapes with the collaboration and participation of local communities	<p>2.1.1. INDEFOR-AP & INCOMA recognized as efficient and reliable institutions to manage international donor funds</p> <p>2.1.2. Enhanced management plans and governance of five protected areas in the Rio Campo and Monte Alen landscapes</p> <p>2.1.3. Enhanced protected area resources and infrastructure, to facilitate the implementation of management plans (enhanced monitoring and management of these PAs)</p> <p>2.1.4. Participatory monitoring and enforcement of laws and policies governing protected areas, and illegal</p>	GET	1,671,047.00	11,610,000.00

Project Component	Financing Type	Expected Outcomes	Expected Outputs	Trust Fund	GEF Project Financing(\$)	Confirmed Co-Financing(\$)
3. Reduced community and production sector impacts on important forest services in landscapes	Investment	<p>3.1. Support local livelihoods and strengthen incentives to conserve forests in the Rio Campo and Monte Alen landscapes</p> <p>3.2. Improvement of sustainable logging practices by private sector logging companies operating within Rio Campo and Monte Alen landscapes</p>	<p>3.1.1. Improved and diversified livelihoods based on the sustainable use of forest and agricultural resources, including income generating and livelihood options for communities, adopted and implemented through a small grants program that capitalises on the GEF UNDP model</p> <p>3.1.2. Technical inputs contributing towards enhanced community benefits accrued from the use and management of protected areas (e.g. NTFP value chains, human-wildlife conflicts)</p> <p>3.2.1. Multi-stakeholder consultations, training and improved enabling environment for sustainable private sector</p>	GET	1,575,580.00	5,900,000.00

Project Component	Financing Type	Expected Outcomes	Expected Outputs	Trust Fund	GEF Project Financing(\$)	Confirmed Co-Financing(\$)
4. Knowledge exchange, partnership, monitoring and assessment	Technical Assistance	4.1. Raising public awareness on the value of natural resources and the importance of conservation	4.1.1. Broad outreach, awareness and information programs on the value of natural resources and the importance of conservation to raise awareness and support for sustainable management of Equatorial Guinea and Congo Basin biodiversity	GET	652,440.00	4,620,000.00
		4.2. Progress of CBSL in Equatorial Guinea is tracked and adaptively managed	4.1.2. School curriculum and programs developed and enhanced to increase knowledge and support for sustainable management of Equatorial Guinea and Congo Basin biodiversity			
			4.2.1. Improved knowledge of best practices in sustainable management of forest resources in the Congo Basin			
			4.2.2. Operational system to monitor and evaluate progress (providing relevant information to			

Project Component	Financing Type	Expected Outcomes	Expected Outputs	Trust Fund	GEF Project Financing(\$)	Confirmed Co-Financing(\$)
				Sub Total (\$)	5,218,107.00	30,770,000.00

Project Management Cost (PMC)

	GET		136,480.00		1,680,000.00	
Sub Total(\$)			136,480.00		1,680,000.00	
Total Project Cost(\$)			5,354,587.00		32,450,000.00	

C. Sources of Co-financing for the Project by name and by type

Sources of Co-financing	Name of Co-financier	Type of Co-financing	Investment Mobilized	Amount(\$)
Recipient Country Government	INDEFOR	Public Investment	Investment mobilized	32,000,000.00
GEF Agency	IUCN	In-kind	Investment mobilized	350,000.00
Civil Society Organization	BZS	In-kind	Investment mobilized	100,000.00
Total Co-Financing(\$)				32,450,000.00

Describe how any "Investment Mobilized" was identified

The project will generate substantial investment mobilized through the INDEFOR programme on protected areas and REDD.

D. Trust Fund Resources Requested by Agency(ies), Country(ies), Focal Area and the Programming of Funds

Agency	Trust Fund	Country	Focal Area	Programming of Funds	Amount(\$)	Fee(\$)
IUCN	GET	Equatorial Guinea	Multi Focal Area	IP SFM Congo Set-Aside	5,354,587	481,913
Total Grant Resources(\$)					5,354,587.00	481,913.00

E. Non Grant Instrument

NON-GRANT INSTRUMENT at CEO Endorsement

Includes Non grant instruments? **No**

Includes reflow to GEF? **No**

F. Project Preparation Grant (PPG)

PPG Required

PPG Amount (\$)

150,000

PPG Agency Fee (\$)

13,500

Agency	Trust Fund	Country	Focal Area	Programmin g of Funds	Amount(\$)	Fee(\$)
IUCN	GET	Equatorial Guinea	Biodiversity	BD STAR Allocation	50,000	4,500
IUCN	GET	Equatorial Guinea	Climate Change	CC STAR Allocation	25,000	2,250
IUCN	GET	Equatorial Guinea	Land Degradation	LD STAR Allocation	25,000	2,250
IUCN	GET	Equatorial Guinea		IP SFM Congo Set-Aside	50,000	4,500
Total Project Costs(\$)					150,000.00	13,500.00

Core Indicators

Indicator 1 Terrestrial protected areas created or under improved management for conservation and sustainable use

Ha (Expected at PIF)	Ha (Expected at CEO Endorsement)	Ha (Achieved at MTR)	Ha (Achieved at TE)
0.00	382,000.00	0.00	0.00

Indicator 1.1 Terrestrial Protected Areas Newly created

Ha (Expected at PIF)	Ha (Expected at CEO Endorsement)	Total Ha (Achieved at MTR)	Total Ha (Achieved at TE)
0.00	0.00	0.00	0.00

Name of the Protected Area	WDP A ID	IUCN Category	Total Ha (Expected at PIF)	Total Ha (Expected at CEO Endorsement)	Total Ha (Achieved at MTR)	Total Ha (Achieved at TE)
----------------------------	----------	---------------	----------------------------	--	----------------------------	---------------------------

Indicator 1.2 Terrestrial Protected Areas Under improved Management effectiveness

Ha (Expected at PIF)	Ha (Expected at CEO Endorsement)	Total Ha (Achieved at MTR)	Total Ha (Achieved at TE)
0.00	382,000.00	0.00	0.00

Name of the Protected Area	WDP A ID	IUCN Category	Ha (Expected at PIF)	Ha (Expected at CEO Endorsement)	Total Ha (Achieved at MTR)	Total Ha (Achieved at TE)	METT score (Baseline at CEO Endorsement)	METT score (Achieved at MTR)	METT score (Achieved at TE)
----------------------------	----------	---------------	----------------------	----------------------------------	----------------------------	---------------------------	--	------------------------------	-----------------------------

Name of the Protected Area	WDPA ID	IUCN Category	Ha (Expected at PIF)	Ha (Expected at CEO Endorsement)	Total Ha (Achieved at MTR)	Total Ha (Achieved at TE)	METT score (Baseline at CEO Endorsement)	METT score (Achieved at MTR)	METT score (Achieved at TE)
Akula National Park Altos de Nsork National Park	125689 NA	Select National Park		70,000.00					
Akula National Park Estuario de Muni Nature Reserve	125689 NA	Select Habitat/Species Management Area		60,000.00			16.70		
Akula National Park Monte Alen National Park	125689 20267	Select National Park		200,000.00			37.50		
Akula National Park Piedra Nzas Natural Monument	125689 NA	Select Natural Monument or Feature		19,000.00					

Name of the Protected Area	WDPA ID	IUCN Category	Ha (Expected at PIF)	Ha (Expected at CEO Endorsement)	Total Ha (Achieved at MTR)	Total Ha (Achieved at TE)	METT score (Baseline at CEO Endorsement)	METT score (Achieved at MTR)	METT score (Achieved at TE)
Akula National Park Rio Campo Nature Reserve	125689 NA	Select Natural Monument or Feature		33,000.00			19.80		

Indicator 4 Area of landscapes under improved practices (hectares; excluding protected areas)

Ha (Expected at PIF)	Ha (Expected at CEO Endorsement)	Ha (Achieved at MTR)	Ha (Achieved at TE)
0.00	202500.00	0.00	0.00

Indicator 4.1 Area of landscapes under improved management to benefit biodiversity (hectares, qualitative assessment, non-certified)

Ha (Expected at PIF)	Ha (Expected at CEO Endorsement)	Ha (Achieved at MTR)	Ha (Achieved at TE)
	200,000.00		

Indicator 4.2 Area of landscapes that meets national or international third party certification that incorporates biodiversity considerations (hectares)

Ha (Expected at PIF)	Ha (Expected at CEO Endorsement)	Ha (Achieved at MTR)	Ha (Achieved at TE)

Type/Name of Third Party Certification

Indicator 4.3 Area of landscapes under sustainable land management in production systems

Ha (Expected at PIF)	Ha (Expected at CEO Endorsement)	Ha (Achieved at MTR)	Ha (Achieved at TE)
	2,500.00		

Indicator 4.4 Area of High Conservation Value Forest (HCVF) loss avoided

Ha (Expected at PIF)	Ha (Expected at CEO Endorsement)	Ha (Achieved at MTR)	Ha (Achieved at TE)
----------------------	----------------------------------	----------------------	---------------------

Documents (Please upload document(s) that justifies the HCVF)

Title	Submitted
-------	-----------

Indicator 6 Greenhouse Gas Emissions Mitigated

Total Target Benefit	(At PIF)	(At CEO Endorsement)	(Achieved at MTR)	(Achieved at TE)
Expected metric tons of CO ₂ e (direct)	0	66445072	0	0
Expected metric tons of CO ₂ e (indirect)	0	0	0	0

Indicator 6.1 Carbon Sequestered or Emissions Avoided in the AFOLU (Agriculture, Forestry and Other Land Use) sector

Total Target Benefit	(At PIF)	(At CEO Endorsement)	(Achieved at MTR)	(Achieved at TE)
Expected metric tons of CO ₂ e (direct)		66,445,072		
Expected metric tons of CO ₂ e (indirect)				
Anticipated start year of accounting		2021		
Duration of accounting		20		

Indicator 6.2 Emissions Avoided Outside AFOLU (Agriculture, Forestry and Other Land Use) Sector

Total Target Benefit	(At PIF)	(At CEO Endorsement)	(Achieved at MTR)	(Achieved at TE)
Expected metric tons of CO ₂ e (direct)				
Expected metric tons of CO ₂ e (indirect)				
Anticipated start year of accounting				
Duration of accounting				

Indicator 6.3 Energy Saved (Use this sub-indicator in addition to the sub-indicator 6.2 if applicable)

Total Target Benefit	Energy (MJ) (At PIF)	Energy (MJ) (At CEO Endorsement)	Energy (MJ) (Achieved at MTR)	Energy (MJ) (Achieved at TE)
----------------------	----------------------	----------------------------------	-------------------------------	------------------------------

Total Target Benefit	Energy (MJ) (At PIF)	Energy (MJ) (At CEO Endorsement)	Energy (MJ) (Achieved at MTR)	Energy (MJ) (Achieved at TE)
----------------------	----------------------	----------------------------------	-------------------------------	------------------------------

Target Energy Saved (MJ)

Indicator 6.4 Increase in Installed Renewable Energy Capacity per Technology (Use this sub-indicator in addition to the sub-indicator 6.2 if applicable)

Technology	Capacity (MW) (Expected at PIF)	Capacity (MW) (Expected at CEO Endorsement)	Capacity (MW) (Achieved at MTR)	Capacity (MW) (Achieved at TE)
------------	---------------------------------	---	---------------------------------	--------------------------------

Indicator 11 Number of direct beneficiaries disaggregated by gender as co-benefit of GEF investment

	Number (Expected at PIF)	Number (Expected at CEO Endorsement)	Number (Achieved at MTR)	Number (Achieved at TE)
Female		11,000		
Male		10,000		
Total	0	21000	0	0

Provide additional explanation on targets, other methodologies used, and other focal area specifics (i.e., Aichi targets in BD) including justification where core indicator targets are not provided

The Ex-Act assessment and the METT is attached to this submission

Part II. Project Justification

1a. Project Description

1) the global environmental and/or adaptation problems, root causes and barriers that need to be addressed (systems description):

The forests of the Congo basin are of critical importance at the global level. Indeed, these forests are the second largest expanse of tropical forests in the world, after the Amazon. The Congo Basin is one of the last regions on Earth where vast, interconnected expanses of tropical rainforest permit biological processes to continue undisturbed. They have high levels of flora and fauna biodiversity (forest elephant, western gorilla, chimpanzee, bonobo are some of the most emblematic), including an important number of endemic species. These forests also provide critical eco-system services for the local, regional and global populations (such as the provision of freshwater, foods, medicines?). Vast quantities of carbon are stocked and absorbed by these eco-systems, and their degradation would lead to significant releases of carbon into the atmosphere, thus contributing to climate change. It would also lead to important ecosystem and biodiversity loss, and their associated services. It is therefore key that these forest eco-systems are preserved. The Monte Alen and Rio Campo landscapes in Equatorial Guinea are transboundary forest landscapes with Gabon and Cameroon that form part of the Congo Basin forests. The transboundary aspect of these landscapes is critical as it allows certain animal populations to range widely.

The degradation and deforestation of forest eco-systems is a major challenge faced at the global level. In Equatorial Guinea the main causes for this are large-scale economic and infrastructure development, a lack of land use planning, limited alternative livelihoods, the unsustainable use of natural resources, in particular illegal and unsustainable logging and poaching, and itinerant small-scale agriculture; and poor governance with regards to managing natural resources.

According to the 2018 FAO study on deforestation and forest degradation in Equatorial Guinea between 2004 and 2014, 3.21% of the forests were deforested and 9.30% were degraded in the continental region. This amounts to an average of 7711 hectares deforested per year and 22 352 hectares of forests degraded per year during the study period. The current and potential future threats to the country's forests, the causes of this deforestation and forest degradation, as well as the barriers to reducing and eliminating these causes are presented in the table below.

Threats	Root causes	Barrier analysis
---------	-------------	------------------

Large-scale infrastructure development Poaching Unsustainable and illegal logging Shifting cultivation	Economic and infrastructure development planning Territorial decisions at the national level to occupy the territory Limited livelihoods and lack of alternatives Unsustainable demand for natural resources (wood and bush meat) Human-wildlife conflicts Weak governance system	No integrated land use planning Poor inter-government coordination and collaboration Insufficient government capacities on sustainable resource management and land use planning Low cross-border cooperation Poor application and control of the law No community involvement in management of protected areas
---	--	--

A number of major projects and programmes designed to address threats to biodiversity, forest and natural resources have been carried out by international organisations in the recent past in various locations across the continental region of Equatorial Guinea. However, there is a limited number of projects and stakeholders operating at present despite the persistence of a variety of threats to forest ecosystems. On-the-ground interventions and additional support is required to complement and upscale existing and past interventions implemented within the project landscapes. In this way, although the project will not fully resolve all identified threats and barriers, it will contribute to addressing them. In addition, while policy and legislative review is also an objective of existing projects, this work will require ongoing attention to strengthen, establish and maintain suitable frameworks to achieve sound and sustainable management of biodiversity, forests and other land based assets.

In conclusion, an analysis of past and present initiatives in Equatorial Guinea reveals a number of gaps to be filled (in line with identified threats and barriers), that the project will contribute to filling.

Gaps to be filled	Project contribution to fill gaps
No cooperation with Gabon and limited cooperation with Cameroon on transboundary natural resource management;	Cross-border multi-stakeholder dialogues on sustainable land use planning and policy issues with transboundary dimensions (output 1.1.1)
The absence of cadaster and land use plans at all levels, leading to conflicting land uses;	Contribution to the development of community-based land use plans at the local levels in Rio Campo and Monte Alen landscapes (output 1.3.1), in synergy with the national land use planning process
Insufficient technical capacity of relevant government personnel to plan and make decisions for the sustainable use of natural resources;	Capacity building program strengthening the ability of relevant government personnel at local and provincial levels to incorporate natural capital and forest dependant people's land rights into land use planning, and management; and strengthening effective local governance of natural resources (output 1.2.2)
Knowledge gaps in government administrations on the NPAS and its related legal framework, leading to lack of consideration of the protected areas in land-use planning decisions;	Capacity building program strengthening the ability of relevant government personnel at local and provincial levels to incorporate natural capital and forest dependant people's land rights into land use planning, and management; and strengthening effective local governance of natural resources (output 1.2.2)

Gaps to be filled	Project contribution to fill gaps
Insufficient human, financial and technical capacity of INDEFOR-AP and INCOMA, to carry out its roles and responsibilities regarding the management of protected areas;	INDEFOR-AP and INCOMA recognised as an efficient and reliable institution to manage international donor funds (output 2.1.1), enhanced management plans of PA in Rio Campo and Monte Alen landscapes (output 2.1.2), enhanced protected areas resources and infrastructure, to facilitate the implementation of management plans (enhanced monitoring and management of these PA) (output 2.1.3), participatory monitoring and enforcement of laws and policies governing PA, and illegal poaching and logging in wider landscapes (output 2.1.4)
Insufficient law enforcement regarding natural resources, in protected areas, forest concessions and the wider landscape;	Participatory monitoring and enforcement of laws and policies governing PA, and illegal poaching and logging in wider landscapes (output 2.1.4)
Knowledge gaps and limited understanding regarding the value of ecosystems and the impacts of human activities (in particular infrastructure development) on these ecosystems, at all levels;	Technical inputs to support the development of improved land use policies, including incorporating natural capital and forest dependant people's land rights in such policies (output 1.2.1), Capacity building program strengthening the ability of relevant government personnel at local and provincial levels to incorporate natural capital and forest dependant people's land rights into land use planning, and management; and strengthening effective local governance of natural resources (output 1.2.2)
Lack of community involvement/participation in land use planning, decision-making processes and governance regarding the management and use of natural resources and of protected areas;	Development of community-based land use plans at the local levels in Rio Campo and Monte Alen landscapes (output 1.3.1), governance and management assessments are carried out at PA levels with communities (output 2.1.2), multi-stakeholder dialogues to promote sustainable forest management by communities, private sector and decentralized and deconcentrated government structures (output 1.3.2)
Lack of opportunities for communities surrounding protected areas to develop environmentally sustainable livelihood activities, including lack of opportunities for alternative protein sources	Improved and diversified livelihoods based on the sustainable use of forest and agricultural resources, including income generating and livelihood options for communities, adopted and implemented through a small grants program that capitalises on the GEF UNDP model (output 3.1.1), technical inputs contributing towards enhanced community benefits accrued from the use and management of protected areas (output 3.1.2)
Lack of a robust legal framework for the sustainable management of production forests (including unclear land tenure and access rights) and inconsistency of application of current legal framework.	Multi-stakeholder consultations, training and improved enabling environment for sustainable private sector forest management in project landscapes, to reduce impact on forests (output 3.2.1)

2) the baseline scenario and any associated baseline projects:

Equatorial Guinea's government is currently focusing on topics such as rural development, natural resource management, decentralization as well as adaptation to and mitigation of climate change. The

international community has provided support to national stakeholders to advance this agenda through a series of projects targeting different geographic areas. The section below provides a summary of past and planned projects at regional and national levels that focus on addressing major forest ecosystem conservation problems in the country.

Past and planned regional projects include:

- **COBAM** (concluded): The project aims to conduct research on synergies and trade-offs between mitigation and adaptation in the forestry sector, in order to provide decision makers with the information and knowledge needed to formulate policies and projects that can effectively address climate change in the Congo Basin. COBAM is implemented by CIFOR under the African Development Bank grant to the Economic Community of Central African States (ECCAS) for financing PACEBCo. The project lasted for 2 years in Equatorial Guinea focusing on capacity building, development of vulnerability scenarios and implementation of pilot activities to reinforce the synergy between adaptation and mitigation, mainly through agroforestry interventions and community-forest-based REDD+ projects.

- **ECOFAC** (concluded): The Regional Programme for the Conservation and Sustainable Use of Forest Ecosystems in Central Africa (ECOFAC) is an EU funded programme implemented in several Central African countries. The Equatorial Guinea component was implemented in the Monte Alen National Park from 1992 to 2010.

- **CARPE** (concluded in EG): CARPE is a long-term initiative of the United States Government to promote sustainable forest management, biodiversity conservation, and climate change mitigation in the Congo Basin through increased local, national, and regional natural resource management capacity. The CARPE program was first authorized by the U.S. Government in 1995 and represents a multi-year, long-term regional initiative divided into three strategic phases.

- **PACEBCo** (1st phase concluded, 2nd phase under preparation): The Congo Basin Ecosystems Conservation Support Programme (PACEBCo) focuses on ecosystem conservation and resilience to climate change, as well as resilience of indigenous and local populations to climate change. The first phase of the programme was carried out between 2010 and 2017, and was financed by the African Development Bank (28 billion FCFA). The second phase is currently under discussion. PACEBCo covers four components: (1) Capacity building of the COMIFAC Treaty institutions; (2) Sustainable management of biodiversity and adaptation to climate change; (3) Sustainable promotion of the well-being of populations; (4) Programme management and coordination.

- **BIOPAMA** (pending): The Programme for Biodiversity and Protected Area Management (BIOPAMA) aims to improve long-term conservation and sustainable use of natural resources in protected areas and neighbouring communities of African, Caribbean and Pacific (ACP) countries. It aims to strengthen the management and governance of protected areas through better use and monitoring of information and capacity building in management and governance. This initiative of the ACP Group of States, funded by the 11th European Development Fund of the EU, is jointly implemented by IUCN and the Joint Research Centre of the European Commission. Equatorial Guinea

has submitted a project proposal which is pending approval. The project proposal includes the Strengthening of the Management of the Monte Alen Landscape: The case of the National Park of Altos de Nsork. The proposal is for two years, with potential funding of 200,000 euros from BIOPAMA.

- **Regional Project for Sustainable Financing of Protected Areas in the Congo Basin** (ongoing): Six Central African countries of the Congo Basin received a grant from GEF 4 for the implementation, through UNDP (implementing agency), of this regional project, to support an approach and methodology that aim to address the challenge of financing protected areas at local, national and regional levels. The goal of this five year project is to build capacity, institutional frameworks and model mechanisms for the long-term financial sustainability of protected area systems and their associated ecosystems.

Past and planned national projects include:

- **National Land Use Plan development:** A process for developing the national land use plan (LUP) is underway, and was defined as one of the activities in the REDD+ National Investment Plan and driven by the General Directorate of Planning and Territorial Development (GDPTD) of the Ministry of Finance, Economy and Planning. In September 2019 a high-level dialogue workshop was held with representatives from various relevant government bodies and an international expert on the topic. A road map to achieve the development of the plan has been laid out and is to be implemented by the Ministry of finances and planning. The roadmap includes carrying out a diagnosis on current national and legal capacities to develop a LUP (mapping of the key actors to be included in the process, mapping of existing legal and institutional regulations, mapping of existing funding sources); holding a validation workshop on the content of the diagnosis in order to submit it to the government; setting up a technical coordination office; elaborating the LUP (defining the competencies of each stakeholder, defining a legislative framework); and constituting a national steering committee for the LUP. These activities require a budget of 3 billion FCFA.

The current barrier consists in finding sufficient funds to fully implement this roadmap. The government has agreed to fund 50% of the LUP process between 2020 and 2022 (1 500 million FCFA) and is looking for other sources of funding. Discussions on this are underway with CAFI and COMIFAC.

- **CUREF** (concluded): The Conservation and Rational Use of Forest Ecosystems project in Equatorial Guinea was funded by the European Union from 1996 to 2001.

- **Strengthening Individual, Legal and Institutional Capacities for Sustainable Land and Forest Management in Equatorial Guinea** (concluded): This project, implemented by UNDP, aimed to strengthen individual, legal and institutional capacities, in order to reduce continued land degradation and deforestation, and in the long term achieve sustainable land and forest management. The project had four outcome components: 1) capacities developed for land and forest management; 2) sustainable land management oriented towards development policies; 3) the medium-term investment plan is established to implement the National Action Plan; 4) an operational management unit with an established training system.

- **REDD+** (ongoing, awaiting financing): A National REDD+ Strategy and National REDD+ Investment Plan have been developed and aim to guide and support the efforts of all parties involved in the implementation of REDD+, which aims to reduce emissions, increase carbon sequestration in forests and improve the management and conservation of carbon stocks. In order to implement the investment plan finances are needed and are being requested through CAFI.

- **FAO Field Schools to improve the development of agricultural production in Equatorial Guinea project** (ongoing): Through various activities such as organizing training workshops for external and internal facilitators, identifying priority crops at the national level, developing good agricultural practices with respect to integrated pest management, strengthening the organization of the value chain and developing strategies for women and youth, among others, this project seeks to achieve the strengthening of the capacity of master trainers and facilitators in the FFS approach, the improvement of production and productivity of small producers and the development of strategies for visibility and institutionalization of the FFS approach in Bioko Island and Bata.

- **FAO Preparatory support to the Designated National Authority (DNA) of Equatorial Guinea to interact with the Green Climate Fund in the first phases of REDD+ (National Forest Monitoring System, Forest Emission Reference Levels and Forest References)** (concluded): The project aims to strengthen the national capacities of the DNA, the inclusion of different actors involved in consultative processes related to the development of an action plan for the National Forest Inventory, access to finance and the mobilization of the private sector in order to generate an enabling environment for investments at national, regional and international levels. The project also aims to strengthen institutional capacities and provide organizational and technical support, in order to raise awareness in the country about good practices in forest governance. It also aims to assist in building capacity to develop strategies to strengthen the private sector and promote its integration into international markets.

- **FAO Preparatory support for the Green Climate Fund commitment in Equatorial Guinea** (concluded): Equatorial Guinea is in its preparatory phase for applying for funding from the GCF to meet international commitments to combat climate change. In this context, this project focuses on strengthening the country's capacity, the insertion of various actors involved in consultative processes, and obtaining identified and nominated candidate entities for accreditation and access to funding through a structured dialogue between the DNA, the accredited entities and the GCF Secretariat. Three important results obtained in its implementation have been the Country Program, the Letter of No Objection and the creation of a national web page.

- **FAO Promotion of community forestry for climate change mitigation and sustainable livelihoods (PPG)** (PPG submitted): Equatorial Guinea wishes to receive funding from the GEF funds in order to continue its actions through its national contributions, with the objective of fighting against climate change. In this approach, the project will be designed with several components: 1) Legal and Policy Framework: the strengthening of the legal and policy framework for sustainable forest and land management; 2) Institutions and Knowledge: the strengthening of institutional capacity and knowledge for sustainable forest and land management and climate change; 3) Community Level Mitigation Actions: supporting mitigation actions through inclusive governance, forests and land planning and management; 4) Monitoring and Evaluation, and dissemination of best practices.

- **Project for the Conservation of the High Socio-Economic Value Ecosystems of the Río Campo Nature Reserve** (concluded): The project was implemented between 2013 and 2016 with the objective of ensuring the preservation of the forest ecosystems of high economic and social value of the Río Campo Nature Reserve through the systematic monitoring of its important biological diversity.

- **Alternatives to the Coastal Population** (ongoing): WCS has been working on nature conservation issues by supporting INDEFOR-AP in the management of coastal protected areas in the continental region of Equatorial Guinea through this ongoing program, whose overall objective is to achieve measurable improvements in the quality of life of people living along the continental coast (Río Campo, Playa Nendji and Punta Ilende) by improving the management of agricultural and fisheries resources.

- **BZS and UWE Bristol project** (ongoing): Since 2018, BZS have partnered with the University of the West of England (UWE Bristol) to run a joint conservation project focused on the Critically Endangered Western Lowland Gorilla in Monte Alén National Park, Río Muni. This project is focused on implementing a long-term monitoring programme for large mammals in the park, working with INDEFOR-AP to help build capacity for wildlife and anthropogenic threat monitoring in the park, and working with local communities to mitigate against human-wildlife conflicts.

- **TOMAGE** (ongoing): Marine Turtles of Equatorial Guinea (TOMAGE) is a marine turtle research and conservation project. This project is integrated in INDEFOR-AP, and involves marine turtle experts. It is funded by Wildlife Without Borders of US Fish and Wildlife Service. The main objective of TOMAGE is to strengthen and achieve the conservation of marine turtles in Equatorial Guinea, working primarily in education and awareness of the population. TOMAGE works in three of the country's protected areas: Río Campo Nature Reserve, Punta Ilende Nature Reserve and Punta Nendji Scientific Reserve.

GEF Interventions:

The main GEF intervention projects linked with the current project in Equatorial Guinea are:

Strengthening the National System of protected areas in Equatorial Guinea for the effective conservation of representative ecosystems and globally significant biodiversity

The goal of this project was to ensure conservation of globally significant biodiversity and representative ecosystems in EG, and the objective was to make EG's protected area system effective in protecting species and ecosystem-level biodiversity. In order to achieve these objectives, three components were proposed:

? A policy framework and strategy for the management of PAs is developed;

? Improved institutional and individual capacities for the management of PAs; and

? Sustainable PA management approaches demonstrated in 3 pilot sites (originally the project was to pilot 3 sites although it ended up working in 5 PAs).

The project was to be executed by UNDP and implemented by Conservation International (CI) and the Ministry of Fisheries and Environment. CI left the country in 2012 and the project then operated under a mix of direct implementation by UNDP, and national implementation through a sequence of different Government Ministries and Agencies. The project was first implemented through the Ministry of

Fisheries and Environment, then by the newly created Ministry of Forests and Environment and finally by the newly created shell of INCOMA that also hosts the GEF Operational Focal Point and which was by law expected to become the national PA Agency.

The project was officially signed on November 23rd, 2010. The Prodoc established a 4-year implementation period. Due to presidential elections and restructuring of government administration affecting the project's governance and difficulties encountered during the initial phase, it took UNDP and the Government almost four years to officially start the project and it was executed over a period of five years, from 2014 to 2019.

The project operated during much of its lifetime without an actual project team, except from late 2014 to 2016 when an international CTA was hired, ensuring project management with INCOMA. Also, during most of the project's lifespan, UNDP did not have a dedicated environment program officer supervising the achievement of outcomes and outputs. In addition, no Project Steering Committee (PSC) was established to guide the project.

Overall, the level of achievement of the project's outcomes was considerably low as only one of the three outcomes was rated as Moderately Satisfactory (component 1), and none of the project targets were met. The M&E of the project was evaluated as Unsatisfactory, and no lessons learnt were developed by the project. As a result, it is difficult to establish how the IUCN GEF project will be able to build on this GEF UNDP project. However, the project's terminal evaluation makes certain observations and recommendations that have been taken into consideration in project design:

- Although not directly related to the project's doing, the country is experiencing certain legal, institutional and financial changes which ought to help manage the NSPA more effectively -> This shows that political will to conserve biodiversity in EG is gradually strengthening, the proposed project will be able to build on this and contribute to strengthening it further.
- Ensure biodiversity conservation and NSPA strengthening projects are hosted within INDEFOR-AP -> The institutional framework of the proposed project plans for the execution of the project to be under the responsibility of the IUCN, in partnership with the Ministry of Agriculture, Livestock, Forestry and the Environment, INDEFOR-AP and INCOMA. The project staff will be hosted by INDEFOR-AP, whose execution capacity will be built by IUCN throughout the project.
- The institutional and individual capacity remains a serious gap towards sustainability of the National System of Protected Areas (NSPA) -> The proposed project plans on addressing this gap through several capacity building activities at various levels of INDEFOR-AP, national and local government (ministries and agencies), PA law enforcement and local communities, through trainer of trainer activities, where relevant, to ensure sustainability of training.
- The project organized sensitization and capacity building campaigns and medium level technicians were trained although there is no clarity as to what the participants were trained -> further capacity building will be provided, as described above, and sensitization campaigns developed in outcome 4.1.
- Future conservation projects require strong community development work for conservation. The impacts of the project on communities has been insignificant and deserves to be strengthened -> This will be addressed through the development of alternative livelihood activities in component 3, as well as through governance assessments in component 2.

- The project supported the elaboration of the Draft Law of Protected Areas as well as the Law on Biodiversity, and lobbied politically for their approval, which is still in process -> The proposed project will continue and build on this work with output 1.2.1.
- The PA management plans which were to be produced by the project were not concluded -> the proposed project will update the management plans of the 5 target project PAs.
- The project produced a highly educational documentary 'El Secreto del Bosque', the first nature documentary filmed in EG -> this will be used and built on for outcome 4.1 on awareness raising.

Finally, the terminal evaluation report states that 'The GoEG has recently started prioritizing biodiversity conservation financially through the NSPA but still requires the assistance from development cooperation funds, such as GEF, to further improve the legal, institutional and managerial capacities'. This underlines the importance of the proposed IUCN GEF project.

Sustainable Financing of Protected Area Systems in the Congo Basin

The project design calls for utilising GEF funding to address barriers to PA financial sustainability within six Congo Basin countries. According to this demonstration approach, approaches to removal of individual barriers would be demonstrated in one or more countries and at pilot PAs, with the resulting lessons captured and shared at national and regional levels and made available for replication. This approach will be further strengthened through a strong reliance on partnerships with donors and other stakeholders across the region that are active in support to PAs and/or PA finance, as a means of covering more ground and stimulating replication. In this way, the project offers a comprehensive yet realistic approach to the challenge of sustainable PA financing across the region and thus provides tangible support to the regional Plan de Convergence.

The project offers an approach and a methodology for addressing the PA financing challenge at local, national and regional levels. Its objective is to have in place capacities, institutional frameworks and model mechanisms for the long term financial sustainability of PA systems and associated ecosystems within six Congo Basin countries, including Equatorial Guinea. It aims to achieve this objective through three interconnected and complementary outcomes: (i) Outcome 1: Legal, policy and institutional frameworks to support sustainable conservation financing strengthened at regional and national levels; (ii) Outcome 2: Enhanced / innovative revenue generation, management and disbursement mechanisms piloted; (iii) Outcome 3: Business planning and cost effective management tools applied at PAs and associated landscapes.

This project is still currently underway and has experienced many delays in implementation. The Equatorial component of the project is the least advanced of the 6 project countries. At this stage and not knowing how the project will have progressed at IUCN GEF project inception, it is challenging to determine how the IUCN GEF project will be able to build on the UNDP GEF project advances and lessons learnt. However, exchanges will take place with the UNDP GEF project team at IUCN GEF project inception to discuss potential collaboration and synergies. The UNDP's project logical framework has been reviewed and no duplications seem to exist with the IUCN GEF project proposed.

Promoting Community-Based Forestry for Climate Change Mitigation and Sustainable Livelihoods in Equatorial Guinea

The project objective is to conserve and enhance forest carbon stocks and promote sustainable livelihoods through a new model of land and forest management with demonstrated economic, social and environmental viability, and potential for expansion. The project will contribute to social equity and gender equality by supporting women-led initiatives and promoting their active role in decision making, land-use activities and equal access to natural resources. To achieve the objective there will be

a multi-level intervention, at policy, institutional and field levels. The project focuses on specific priority interventions defined in the country's REDD+ National strategy, with a multi-sectoral approach and the engagement of multiple stakeholders (government institutions, communities, private sector, civil society and academia).

The project will be implemented in the framework of the following components:

- ? Component 1: Strengthening the policy and institutional framework and capacity for sustainable land and forest management.
- ? Component 2: Promoting a sustainable model of land and forest management for climate change mitigation.
- ? Component 3: Developing inclusive agriculture value chains for climate change mitigation.
- ? Component 4: Monitoring, evaluation and dissemination of best practices.

FAO will serve as the GEF agency accompanying INCOMA, INDEFOR and INPAGE in the execution of the project. This project should start being implemented a year before the IUCN GEF project, then both projects will be carried out in parallel.

The FAO GEF project will be complementary to the activities of the IUCN GEF project presented in this document. In terms of strengthening of the policy and institutional framework, the FAO project will focus on tenure governance related to land and forest in general (Forestry Law 1/1997 and the Land Ownership Regime Act 4/2009) whereas the IUCN GEF project will focus on the governance of protected areas (Protected Areas Law). The FAO project will work more closely with the private sector on sustainable and legal timber production. It will also work with 3 villages in the Litoral district, south of Bata on developing pilot community land and forest management plans. These villages are outside the IUCN project landscapes but the results of these activities will be considered when developing local land use plans with communities in the IUCN project, so as to build on lessons learnt. Furthermore, the FAO project will work towards developing sustainable agricultural value chains: coffee and coconut oil. These activities will be carried out outside the IUCN project landscapes, but their outcomes will be considered in developing the alternative livelihoods activities so as to develop synergies.

3) the proposed alternative scenario with a description of outcomes and components of the project:

At the national level, baseline information gathered on natural resources and other variables as well as capacity building will contribute to sound and efficient decision making with regards to land use and natural resources. The project interventions will contribute to informing meta-analyses at the regional level, thereby supporting the sustainable management of natural resources in the Congo Basin as a whole. In addition, the project will promote and support conservation activities, including transboundary collaboration, improved governance of protected areas, the development of alternative livelihoods, and land use planning processes. This will include addressing current knowledge gaps and insufficient capacities of relevant stakeholders. The project interventions will also lead to improved community livelihoods through the diversification of income-generating sources, increased direct economic value and benefits from natural resources, and increased resilience to the effects associated with climate change.

The logic of intervention of the project is:

- ? to support the development of land use plans at the local levels to avoid conflicting land uses having a detrimental impact on natural resources;

? to promote the adoption of improved livelihoods in the Monte Alen and Rio Campo landscapes, based on the sustainable use of natural resources to compensate for the loss of income resulting from the presence of protected areas (reducing detrimental logging and poaching);

? to support INDEFOR-AP in improving the management of the landscapes? protected areas (monitoring, law enforcement, infrastructure, training?).

The project will enable community investments to be carried out in a sustainable way for natural resources and then be duplicated through a favourable enabling environment and financing that will support good practices. The project aims to seed fund activities so they can be duplicated and have positive impacts on communities? livelihoods. A particular emphasis will be placed on involving women and youth throughout the project.

Equatorial Guinea has limited experience in land use related projects. Considering this, it is important to start with the basics in order to achieve change: carry out diagnosis studies, identify the problems and challenges, propose solutions, design strategies and action plans, and build capacity before finally implementing plans and recommendations. In addition, the project aims to create stronger political understanding, capacity and will towards protecting the country?s forest ecosystems, through capacity building, and thus support and catalyse change.

Without the project?s interventions, ecosystem degradation will have a direct and negative impact on the local population, including on many endemic species that depend on these habitats. In addition, the goods and services forest ecosystems produce will diminish (e.g. water resources regulation, carbon sequestration, food production, climate regulation, pollution control). In keeping with the landscape approach the project will collaborate with the GEF Cameroon, Gabon and Regional projects.

Some minor changes to the project framework have been made since the PIF. These are summarized in the table below.

Topic	Main changes from PIF
--------------	------------------------------

Core indicator targets

Targets from PIF:

Core Indicator 1 (Terrestrial protected areas): 375,500 ha

Core Indicator 4 (Area under improved practices): 362,500 ha

Core Indicator 6 (GHG mitigated): 12,112,102 metric tons over 20-year period

Core Indicator 11 (beneficiaries): 75,000 of which 40,000 will be women

Revised targets in CEO ER:

Core Indicator 1 (Terrestrial protected areas): 382,000 ha

Core Indicator 4 (Area under improved practices): 202,500 ha

Core Indicator 6 (GHG mitigated): 66,445,072 metric tons over 20-year period

Core Indicator 11 (beneficiaries): 21,000 of which 10,000 will be women

The area targets have been adjusted to reflect the following:

Core indicator 1: An error was made in calculating the terrestrial protected areas in the PIF. The following data was considered:

Monte Alen NP ? 200,000 ha

Altos de Nsork NP ? 70,000 ha

Rio Muni NR ? 70,000 ha

Rio Campo NR ? 35,500 ha

The PIF calculations did not take into consideration Piedra Nzas NM. An error with regards to the surface area of Rio Campo and Rio Muni NR was also made.

The correction is as follows:

Monte Alen NP ? 200,000 ha

Altos de Nsork NP ? 70,000 ha

Rio Muni NR ? 60,000 ha

Rio Campo NR ? 33,000 ha

Piedra Nzas NM ? 19,000 ha

Total ? 382,000 ha

Core indicator 4:

The following assumptions made:

Indicator 4.1 = 200,000 ha ? it is assumed that each of the 5 local land use plans developed will contribute to 40,000 ha under improved management to biodiversity
Indicator 4.3 = 2,500 ha ? it is assumed that the micro-projects developed in the areas surrounding each of the 5 PAs, along with the 5 local LUPs will contribute to 500 ha under sustainable land management in production systems in each of the 5 project target areas.

Core indicator 6: the GHG mitigation was evaluated using the EXACT tool (see

Revised outcomes and outputs	Wording for all outcomes and outputs has been made clearer and more concrete, based on consultations with stakeholders. These changes are detailed below by component.
------------------------------------	--

Component 1:
Integrated and
improved land
use planning,
policies, and
management

Previous outcome/output wording:

Outcome 1.1. Enhanced cooperation, planning and policies at national level, governing use of transboundary resources and landscapes

Output 1.1.1. Cross-border multi-stakeholder dialogues on sustainable land use planning and policy issues with transboundary dimensions (e.g., illegal poaching, logging and mining; infrastructure development; connectivity; legal extractives; water)

Output 1.1.2. Cross-border policy maker tours with Gabon and Cameroon to promote learning and exchange on best practice land use planning, policies and management

Output 1.1.3. Briefs, analysis and on-demand technical inputs to support development of improved policies governing transboundary landscapes, including cost-benefit assessments of alternative land management plans incorporating value of natural capital

Output 1.1.4. Capacity building program strengthening ability of relevant national ministries to incorporate natural capital into land use planning, policies, and management

Outcome 1.2. Development and uptake of integrated land use management plans in the Rio-Campo and Monte Alen landscapes, with the full participation of local and indigenous stakeholders, to support the sustainable management and ecological integrity of these landscapes

Output 1.2.1. Multi-stakeholder land-use planning at the local levels, in the Rio-Campo and Monte Alen landscapes

Output 1.2.2. Briefs, analysis and on-demand technical inputs to support development of improved land-use planning in the Rio-Campo and Monte Alen landscapes

Output 1.2.3. Capacity building program strengthening effective local governance of natural resources

New outcome/output wording:

Outcome 1.1. Enhanced cooperation and planning at national level, governing the use of transboundary resources and landscapes

Output 1.1.1. Cross-border multi-stakeholder dialogues on sustainable land use planning and policy issues with transboundary dimensions (e.g., illegal poaching and logging; infrastructure development; connectivity; legal extractives; water)

Outcome 1.2. Ensure that protected areas, natural capital and forest dependant people's rights are taken into account in the land use planning processes and decisions at local and landscape levels

Output 1.2.1. Technical inputs to support the development of improved land use policies, including incorporating natural capital and forest dependant people's land rights in such policies

Output 1.2.2 Capacity building program strengthening the ability of relevant government personnel at local and provincial levels to incorporate natural capital and forest dependant people's land rights into land use planning, and management; and strengthening effective local governance of natural resources

Outcome 1.3. Development and uptake of integrated land use management plans in the Rio Campo and Monte Alen landscapes, with the full participation of local

Component 2:
Ensuring the
long-term
viability of
forests
providing
important
habitat to
endangered
species and
critical
ecosystem
services

Previous outcome/output wording:

Outcome 2.1. Improved management of PAs within Rio-Camp and Monte Alene landscapes (as assessed by METT indicators); as well as surrounding buffer zones, conservation areas and corridors, with collaboration and participation of local communities

Output 2.1.1. Capacity building program to strengthen protected area management and management of surrounding buffer zones, conservation areas and corridors, for key stakeholders

Output 2.1.2. Development and implementation of enhanced management plan at Protected Areas

Output 2.1.3. Enhancement of protected area resources and infrastructure within Protected Areas, to facilitate enhanced monitoring and management of these PAs

Output 2.1.4. Participatory monitoring and enforcement of laws and policies governing protected areas, and illegal poaching and illegal logging in wider landscapes.

Output 2.1.5. Enhancement of community-benefits (indigenous and local population, women and youths) accrued from the use and management of Protected Areas (e.g. management of buffer zones, respect for their traditional user rights, local monitoring etc).

New outcome/output wording:

Outcome 2.1. Improved management of natural resources and PAs within the Rio Campo and Monte Alen landscapes with the collaboration and participation of local communities

Output 2.1.1. INDEFOR-AP & INCOMA recognized as efficient and reliable institutions to manage international donor funds

Output 2.1.2. Enhanced management plans and governance of five protected areas in the Rio Campo and Monte Alen landscapes

Output 2.1.3. Enhanced protected area resources and infrastructure, to facilitate the implementation of management plans (enhanced monitoring and management of these PAs)

Output 2.1.4. Participatory monitoring and enforcement of laws and policies governing protected areas, and illegal poaching and logging in wider landscapes

Justification of changes:

Outcome 2.1 was reformulated to remove "surrounding buffer zones, conservation areas and corridors" because conservation areas and corridors do not currently exist in Equatorial Guinea and buffer zones are not clearly defined. This therefore seemed too ambitious as an output. However, the activities of output 2.1.2 (assessments and management plans) will work on buffer zones definition.

Output 2.1.1 (strengthening INDEFOR-AP & INCOMA's capacity to manage funds) was added at the request of national stakeholders and because it will contribute to the outcome. Output 2.1.1 of the concept note was removed as capacity building activities were included in the various other outputs. Output 2.1.2 was reformulated: management plans do not need to be developed but updated, and implementation was removed from the title as these activities will be funded as part of outputs 2.1.3 and 2.1.4. Output 2.1.3 was reformulated to reflect this. Output 2.1.4 was not modified. Output 2.1.5 was removed as community-benefits aspects were integrated in output 2.1.2 on governance and partly in output 2.1.4 with community patrol teams.

Component 3:
Reduced
community and
production
sector impacts
on important
services of
forests in
landscapes

Previous outcome/output wording:

Outcome 3.1. Development of local eco-tourism and NTFP industries to support local livelihoods and strengthen incentives to conserve forests in Rio-Camp and Monte Alene landscapes

Output 3.1.1. Capacity-building program for local entrepreneurs and community members to support development/growth of local eco-tourism and NTFP industries

Output 3.1.2. Eco-tourism strategy to facilitate and support the growth and sustainable/responsible management of tourism in the Rio-Camp and Monte Alene landscapes

Output 3.1.3. Small grants program that capitalizes on the UNDP/UNOPS GEF SGP model that focuses on issues related to IPLC, eco-tourism and NTFP ventures for forest community entrepreneurs within Rio-Camp and Monte Alen landscapes

Output 3.1.4. Land/tree tenure rights, access to natural resources and appropriate benefit-sharing mechanism secured for forest dependent communities, especially indigenous and local population, women and youths.

Output 3.1.5. Supporting multi-stakeholder dialogues and training programs to promote sustainable forest management by communities, private sector and decentralized and deconcentrated government structures

Outcome 3.2. Improvement of sustainable logging practices by private sector logging companies operating within Rio-Camp and Monte Alene landscapes

Output 3.2.1: Multi-stakeholder consultations, training and improving the enabling environment related to certification of private sector logging companies operating within Rio-Camp and Monte Alene landscapes, to reduce impacts on forests

New outcome/output wording:

Outcome 3.1 Support local livelihoods and strengthen incentives to conserve forests in the Rio Campo and Monte Alen landscapes

Output 3.1.1. Improved and diversified livelihoods based on the sustainable use of forest and agricultural resources, including income generating and livelihood options for communities, adopted and implemented through a small grants program that capitalises on the GEF UNDP model

Output 3.1.2. Technical inputs contributing towards enhanced community benefits accrued from the use and management of protected areas (e.g. NTFP value chains, human-wildlife conflicts)

Outcome 3.2. Improvement of sustainable logging practices by private sector logging companies operating within Rio Campo and Monte Alen landscapes

Output 3.2.1. Multi-stakeholder consultations, training and improved enabling environment for sustainable private sector forest management in Rio Campo and Monte Alen landscapes, to reduce impacts on forests

Justification of changes:

Outcome 3.1 was reformulated to be made more open and not necessarily specific to eco-tourism and NTFP (so as to integrate agricultural activities for example). Output 3.1.3 of the concept note on small grants program became output 3.1.1 and was

Component 4:
Knowledge
Exchange,
Partnership,
Monitoring and
Assessment

Previous outcome/output wording:

Outcome 4.1: Improved knowledge of best practices in sustainable management of Congo Basin resources amongst CBSL partners and wider community

Output 4.1.1: Participation in regional CBSL meetings and workshops to promote knowledge sharing and exchange and partnership

Output 4.1.2: Development of high-quality briefs capturing progress and lessons learned in CBSL Equatorial Guinea

Output 4.1.3: School curriculum and programs developed/enhanced to increase knowledge and support for sustainable management of Congo Basin biodiversity

Output 4.1.4: Radio and TV programs on the value of natural resources and the importance of conservation disseminated to raise awareness and support

Outcome 4.2: Progress of CBSL in Equatorial Guinea is tracked and adaptively managed.

Output 4.2.1: System to monitor and evaluate progress operational (providing relevant information to managers, stakeholders and Regional Initiative);

Output 4.2.2: Rural communication (RERAC) to sensitize rural communities, especially women, indigenous and local population and youths, decentralized and deconcentrated government officials on landscape-scale conservation and local development

New outcome/output wording:

Outcome 4.1. Raising public awareness on the value of natural resources and the importance of conservation

Output 4.1.1. Broad outreach, awareness and information programs on the value of natural resources and the importance of conservation to raise awareness and support for sustainable management of Equatorial Guinea and Congo Basin biodiversity

Outcome 4.2. Progress of CBSL in Equatorial Guinea is tracked and adaptively managed

Output 4.2.1. Improved knowledge of best practices in sustainable management of forest resources in the Congo Basin

Output 4.2.2. Operational system to monitor and evaluate progress (providing relevant information to managers, stakeholders and Regional Initiative)

Justification of changes:

Outcome 4.1 was made specific to general public awareness raising, at national level, and outcome 4.2 was made to address CBSL knowledge management at regional level. Outputs 4.1.1 and 4.1.2 of the concept note were integrated as activities of output 4.2.1. Output 4.1.4 of the concept note became output 4.1.1 and was reformulated to be more general, and includes aspects of output 4.2.2 of the concept note, which was removed from output 4.2.1. Output 4.1.3 of the concept note was removed so as not to have an over ambitious project and to focus resources on a smaller number of knowledge management activities, for greater impact. Output 4.2.1 was created to integrate outputs 4.1.1 and 4.1.2 of the concept note to outcome 4.2. Output 4.2.1 of the concept note became output 4.2.2 without any other changes.

Co-financing amounts

Co-financing amounts from PIF: 37,500,000 USD

The co-financing amounts in the CEO ER have been refined to the figures below

<i>USD</i>	Recipient Gov	IUCN	BZS	Total
Component 1	8 640 000			8 640 000
Component 2	11 520 000		90 000	11 610 000
Component 3	5 760 000	140 000		5 900 000
Component 4	2 880 000	140 000		3 020 000
Project management cost	1 600 000	70 000	10 000	1 680 000
Monitoring & evaluation	1 600 000			1 600 000
Total	32 000 000	350 000	100 000	32 450 000

The goal of this project is to conserve and sustainably manage biodiversity and forest ecosystems in the Monte Alen and Rio Campo landscapes in Equatorial Guinea through an inclusive landscape approach, effective land use planning, enhanced management of protected areas and sustainable livelihood options. In achieving this goal, the degradation of forest ecosystems will be reduced and there will be a multiplication of co-benefits. The project is divided into four components:

Component 1: Integrated and improved land use planning, policies, and management

The activities carried out in this component will contribute to improving the enabling environment for the development of integrated land use plans and better land use planning policies that take natural resources into consideration. To achieve this the project will build on existing and past initiatives to strengthen cross-border collaboration, provide appropriate tools and knowledge, build capacity and involve stakeholders from various sectors and levels. The development of local land use plans will contribute to better managed and preserved forest ecosystems, and will take in consideration lessons learned from past LUP initiatives in the Congo Basin. Strong collaboration with the regional CBSL project will be fostered for all activities of this component to build on the methods, tools, resources, partnerships and guidance the regional project can provide.

Outcome 1.1. Cross-border multi-stakeholder dialogues with Cameroun and Gabon on sustainable land use planning and policy issues with transboundary dimensions will lead to enhanced cooperation, planning and policies at national level, governing the use of transboundary resources and landscapes. The project will support the signing and implementation of a collaboration agreement between Cameroun and Equatorial Guinea to establish a framework for collaboration and partnership in order to manage and promote the conservation and rational use of the natural resources of the Campo-Ma'an National Park and the Rio Campo Nature Reserve and to foster sustainable development for the benefit of local communities through the creation of a transboundary complex known as the Binational Rio-Campo-Ma'an (BRCM). In addition, cross-border policy maker tours with Gabon and Cameroon will promote learning and exchange on best practice land use planning, policies and management. Stakeholders involved in the tours will be inter-institutional and include high-level members from the key ministries and government institutions involved in land use issues to ensure cross-sector exchanges. The cross-border tours between key stakeholders of Equatorial Guinea and its neighbours will lead to improved communication, coordination and collaboration between countries on cross-border aspects such as illegal trade in animal products, illegal logging and wood trade, industry development, eco-tourism and trans-boundary wildlife migration. The output of these exchanges will also include lessons learnt in terms of land use planning in the various countries (national land use process in Gabon for example), that will then be used in the country's various land use planning process.

Outcome 1.2: A number of technical inputs will be drafted to support the development of improved land use policies and plans, including the incorporation of natural capital in land use planning. The technical inputs will be used as decision-making support tools in the land use planning processes. These inputs include a study on the state of forest fragmentation and its consequences on ecosystems, and a study on the value of ecosystem services of the Monte Alen and Rio Campo landscapes. The results of the studies will be communicated to relevant policy makers and members of government through capacity building sessions (see activity 1.2.2.1), to raise awareness on these topics, and will be considered in LUP activities (output 1.3.1). They will also be used to elaborate and publish regular policy and technical briefs (activity 4.2.1.2) to support decision-making on governance and management of protected areas, valuation of natural capital and promotion of land rights and livelihood options of local communities, thus leading to the development of land use plans that take forest ecosystems into consideration. Furthermore, limited knowledge and insufficient understanding of the value of ecosystems and land tenure rights by decision makers hinders land use planning processes. More generally, there is insufficient technical capacity for land use planning and natural resources management using a holistic approach to enable environment preservation and sustainable development. In order to address this, a diagnosis on current capacities to develop a land use plans will be carried out and relevant government and ministry personnel from all institutions taking part in land use planning processes will be trained on the sustainable management and use of natural resources and protected areas, and the related legal framework. This will strengthen their ability to incorporate protected areas, natural capital and forest dependant people's land rights into land use planning and management, and strengthen effective local governance of natural resources.

Outcome 1.3: This outcome will contribute to the elaboration of the land use planning methodology developed by the CBSL IP Regional project at the landscape level. It will support the appropriation of the methodology in the Monte Alen landscape, through the already established multi-stakeholder landscape platform. Furthermore, community-based land use plans will be developed at the local levels in the Rio Campo and Monte Alen landscapes. A roadmap to develop multi-stakeholder local level land-use plans will be developed, and 5 pilot multi-stakeholder land use plans will be produced at the local level (one pilot in the vicinity of each protected area of the targeted landscapes). Peer-to-peer training sessions will be held to capitalise on these pilot land use plans and spread the initiative. These interventions will contribute to the development and uptake of integrated land use management plans in the project landscapes, with the full participation of local stakeholders, to support the sustainable management and ecological integrity of these landscapes.

Finally, the project will support the functioning of the Monte Alen landscape multi-stakeholder platform (elaboration of their statutes, meetings, exchange of experiences and lessons learned, etc) to encourage multi-stakeholder dialogues and promote sustainable forest management by communities, private sector and decentralized and deconcentrated government structures. The platform will be used as a tool to ensure the involvement of communities in local natural resource governance, as a way to involve local stakeholders in the national land use planning process and make the link between the local small scale LUPs developed and the national LUP, and as a means to develop multi-stakeholder

partnerships that promote community-based forest management, and that could propose projects to be funded through the micro-projects grants (output 3.1.1) of the country project, or the micro grants and credits provided by the CBSL regional project and open to community-based organisations, civil society organisations and local NGOs. The regional CBSL project will provide guidance on this point.

Component 2: Ensuring the long-term viability of forests providing important habitat to endangered species and critical ecosystem services

This component will strengthen protected areas management in the landscapes to ensure sustainable conservation of the forest ecosystems within them. This will be done by strengthening the capacities of INDEFOR-AP to manage PAs, at various levels: top management (on enhanced management of financial resources), middle management (PA managers and assistant managers on PA and natural resource management), and eco-guards. This will ensure that INDEFOR-AP personnel is in a better position to carry out their roles adequately. Wider law enforcement personnel will also be trained on law enforcement with regards to PAs and natural resources. These trainings will be institutionalised through training of trainers. INDEFOR-AP will also be supported through improved infrastructure and equipment to carry out its missions. PA governance will be strengthened and local communities involved through several assessments (SAPA, SAGE and METT), and subsequent action plans put in place. The regional CBSL project will be solicited to provide technical support and guidance on how to incorporate traditional knowledge and learning of local communities into PA forest management, as well as how to ensure participation of local communities in natural resource governance (as laid out in REPALAC's Strategic Plan 2025). All these activities will build on existing infrastructure and capacity provided by previous conservation projects (e.g. PACEBCo, ECOFAC, CARPE etc), and INDEFOR-AP's existing activities and operations (co-financing).

Outcome 2.1: The activities in this outcome of the project will lead to improved management of natural resources and PAs within the Rio Campo and Monte Alen landscapes with the collaboration and participation of local communities. A financial audit of INDEFOR-AP and of INCOMA will be carried out, and recommendations for better management of its financial resources will be formulated and implemented, including capacity building on these aspects. This will diversify INDEFOR-AP and INCOMA's fund sources and ensure better management of their funds, therefore leaving them in a better position to carry out their mission of managing natural resources and protected areas. INDEFOR-AP and INCOMA will thus be recognized as efficient and reliable institutions to manage international donor funds.

A number of assessments will be carried out in the landscapes in line with the IUCN Green List Standard, that will be used as the overarching framework for guiding fair and effective protected and conserved areas. The assessments that will be carried out as part of this output will allow for a comprehensive review against the IUCN Green List Standard. A Social Assessment for Protected Areas (SAPA) will enable communities and PA management to collectively assess positive and negative impacts (benefits and costs) of conservation from a community perspective and governance issues of recognition and procedure, and identify, plan, and monitor actions to improve and which will be included in PA management plans. Where SAPA indicates there will be value in a dedicated governance assessment, the multi-stakeholder Site-level Assessment of Governance and Equity (SAGE) tool will be used. The SAGE initiative aims to improve the governance and equity of protected areas, and is aligned with METT. SAGE will include planning actions to improve governance and equity and monitoring of progress. Thereafter, the Management Effectiveness Tracking Tool (METT), will be carried out for each of the PAs targeted by the project, through a participatory process,

involving stakeholders from various levels. The tool will be implemented at beginning, mid-term and end of the project, to track progress. After each assessment an action plan will be drawn up and implemented to ensure adaptive management. Lessons learnt from other similar initiatives in the Congo Basin will be identified and considered in this output.

In addition, the management plans in the PAs of the Monte Alen landscape will be updated, and the management plan of the upcoming Rio Campo National Park will be developed, via a participatory process and in line with governance assessments. Finally, to ensure enhanced management of the protected areas, the PA management personnel will be trained on best management practices.

The project will support INDEFOR-AP's control and monitoring work by financing eco-guard patrols, managers' field missions, equipment, signage and PA zoning delimitation. It will also finance improvement and maintenance of key infrastructure of the protected areas of the landscapes to facilitate project delivery. The enhanced protected area resources and infrastructure will facilitate the implementation of management plans through enhanced monitoring and management of these PAs.

Several activities of participatory monitoring and enforcement of laws and policies governing protected areas, and illegal poaching and logging in wider landscapes will be implemented by the project. These include capacity building of eco-guards to ensure effective and equitable patrols, setting up and training community patrol teams, and carrying out capacity building of local forest law enforcement actors such as the police, army, mayors, justice, divisional officers etc. Further awareness raising of law enforcement will be carried out by the regional child project (in coordination with the Equatorial Guinea country project), in particular on illegal wildlife trade.

Component 3: Reduced community and production sector impacts on important forest services in landscapes

This component will work with local communities living near protected areas, to develop alternative livelihood activities, in order to decrease the dependence and pressure on forest ecosystems and the services they provide, deliver socio-economic benefits, and increase local people's resilience to climate change. Local communities will be supported in developing sustainable micro-projects that generate lasting income. The project will provide technical inputs on NTFPs, to be incorporated in micro-project development. In addition, the project will work with the private sector to guide forest management towards more sustainable practices, thus decreasing the logging sector's impact on the country's forests. The CBSL regional project will be solicited to provide guidance for the activities of this component (in particular with regards to community-led multi-stakeholder partnerships that could be developed and funded through the micro-project grant).

-

Outcome 3.1: A small grants program will be developed, capitalising on the GEF UNDP model, to improve and diversify livelihoods based on the sustainable use of forest and agricultural resources, including income generating and livelihood options for communities. This approach of micro-projects was selected to maximise ownership of the livelihood improvement interventions to be developed under the project, and ensure that they are aligned with the needs and aspirations of community members and therefore sustained beyond the project lifespan. This output will include capacity building activities for civil society organisations as well as for local entrepreneurs and community members. To facilitate transformational and sustainable change among civil society organisations, the project will also partner with UNDP and the Government of Equatorial Guinea to set up a GEF UNDP Small grants Program for Equatorial Guinea that will continue after the life-span of the project and support the sustainability of the project's livelihood development activities. The development of this output will

build on lessons learnt from other similar initiatives in the Congo Basin and from tools and guidance provided by the CBSL regional project.

Technical inputs contributing towards enhanced community benefits accrued from the use and management of protected areas will be developed. NTFP catalogues will be elaborated with the participation of the local population, and a market study on the opportunities of developing an NTFP value-chain carried out to identify which NTFPs have the most potential. In addition, the project will support research on human and wildlife conflicts in order to understand them and propose and test appropriate mitigation measures. Ultimately, results from this research will enable the creation of a strategy to alleviate the pressures from human-wildlife conflict in the area around Monte Alén National Park that would benefit the local community while also improving the protection of threatened species in this area.

Outcome 3.2: A team of selected ministry staff, stakeholders of the private forestry sector and civil society will go to Gabon and Cameroon to learn from their advanced experiences on sustainable management of forest concessions and capitalize on them. The results of these exchanges will be shared and communicated through a multi-stakeholder workshop where consultations to improve key policies and/or legislative frameworks that favour certification and sustainable forest management in the Rio Campo and Monte Alén landscapes will be held, with the aim of improving the enabling environment and reducing unsustainable logging activities and impacts on forests. This output will also include training sessions for ministry staff and the private sector on sustainable forest concession management and certification processes, with the use of the FAO Sustainable Forest Management Toolbox.

Component 4: Knowledge exchange, partnership, monitoring and assessment

This component will raise public awareness and educate school children on the value of the forest ecosystems and the importance of conserving them. The awareness raising activities will also be linked to outcomes 1.3, 2.1 and 3.1 in order to foster behaviour change that will facilitate the implementation of local level land use plans, the effectiveness of conservation of protected areas and the development of sustainable alternative livelihoods.

This component will also enable the sharing of project experiences and lessons learnt at local, national and regional level through various means of communication so as to touch a large number of stakeholders. The project's progress will be tracked and project management and interventions adapted accordingly, to ensure project impact.

The knowledge related activities in this component will use the mechanisms established by the regional CBSL project for assimilating, documenting and sharing knowledge gained through project experience. The regional project will provide knowledge management instruments that will be used to strengthen sharing of lessons learnt and best practices. The regional project will also provide support for the creation of knowledge products that serve the visibility of the CBSL IP at national and regional levels.

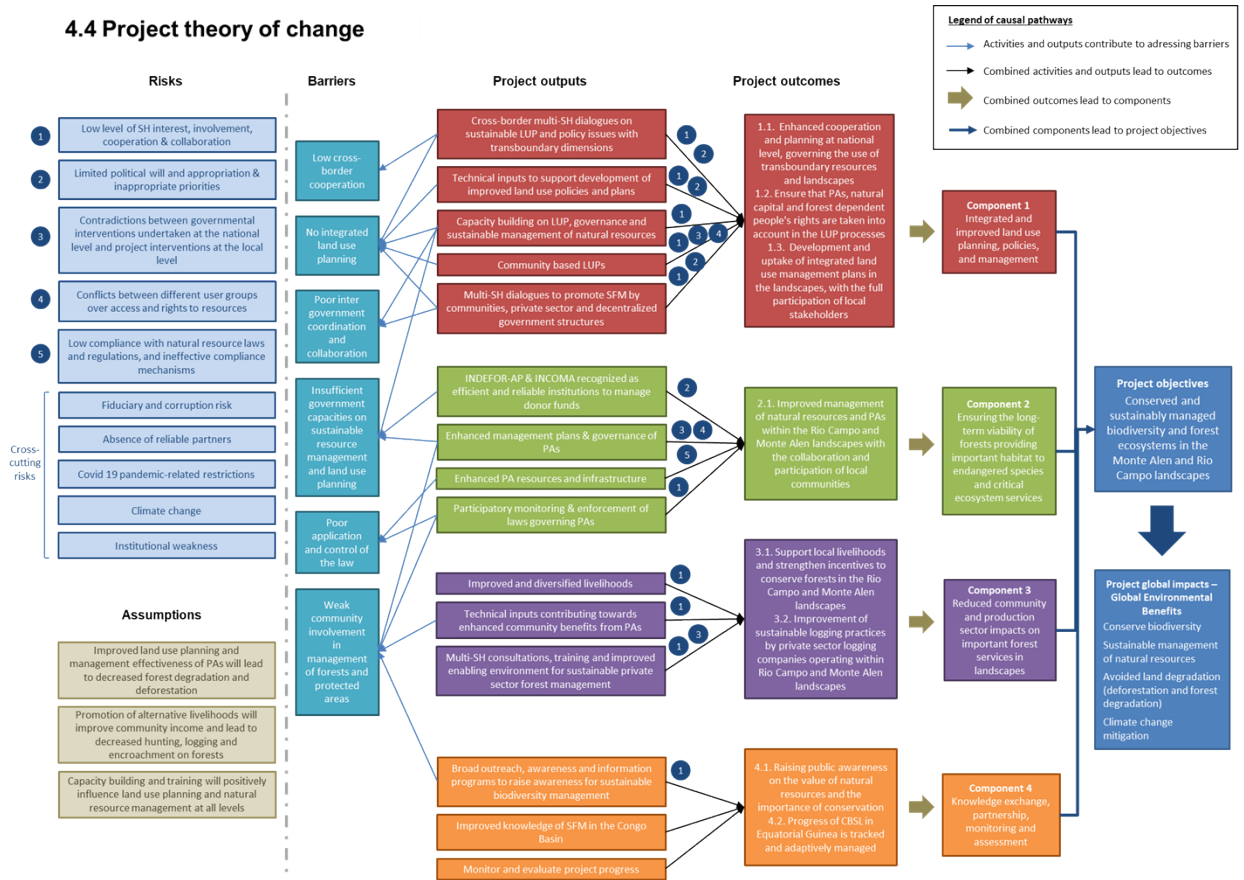
Templates, processes and guidelines provided will be used and implemented in developing knowledge products.

Outcome 4.1: Broad outreach, awareness and information programs on the value of natural resources and the importance of conservation will be designed and implemented to raise awareness and support at national and local community levels for sustainable management of Equatorial Guinea and Congo Basin biodiversity. The turtle conservation program TOMAGE, which also works on raising local awareness on biodiversity conservation issues will be supported by the project to continue and enhance its sensitization work.

Outcome 4.2: The project will participate in regional CBSL meetings and workshops to promote knowledge sharing, exchange and partnership. It will also facilitate the publication and dissemination of lessons learned on the implementation of the project through the development of high-quality briefs. This will lead to improved knowledge of best practices in sustainable management of forest resources in the Congo Basin. An operational system to monitor and evaluate the project's progress following the guidelines of the Regional Initiative of the CBSL IP will be put in place. Relevant information will also be provided to contribute to the CBSL Regional Information system and web-portal.

The figure below presents the project's theory of change

4.4 Project theory of change



4) alignment with GEF focal area and/or impact program strategies

The project is fully aligned with the GEF focal areas (land degradation, climate change and biodiversity), as well as with the impact program strategies. The project will contribute to combatting ecosystem degradation by supporting the development of integrated land use plans; providing capacity building for a wide range of stakeholders; and working to improve community participation in management of natural resources through enhanced governance structures. The project will strive to carry out a multi-sectoral and multi-stakeholder approach in implementing its activities, in order to promote inter-institutional cooperation.

In addition, the project will contribute to biodiversity conservation by supporting improved management of the landscapes' protected areas through capacity building of the stakeholders involved, increased law enforcement patrols and enhanced infrastructure. The development of sustainable alternative livelihoods by local communities will be driven by the project, and will decrease pressure on the landscapes' natural resources. Awareness on environmental issues and the conservation of natural resources will be raised at the national and local levels, targeting government officials, rural and urban dwellers and school students.

The project interventions undertaken at the national, landscape and local levels will lead to reduced unsustainable logging, poaching, as well as enhanced land use planning. These interventions will have important benefits for biodiversity conservation, ecosystem functioning and carbon sequestration. The project will contribute to protecting a globally recognized forest ecosystem, the Congo Basin forests, which hold national, regional and global importance, against further biodiversity loss.

Decreased forest eco-system degradation and improved management of natural resources will also contribute to combatting climate change mitigation by halting the release of GHG emissions through avoided deforestation.

5) incremental/additional cost reasoning and expected contributions from the baseline, the GEFTF, LDCF, SCCF, and co-financing

The project will capitalize as much as possible on experience previously gained in the country, and in the Monte Aï?n and Rio Campo landscapes, regarding the management of natural resources to ensure a demonstrable decreased rate of deforestation and forest degradation, improved carbon stocks and biodiversity in forested lands, and enhanced livelihoods of local populations.

Cross-border multi-stakeholder dialogues, technical inputs and capacity building of government stakeholders will lead to integrated and improved land use planning and management that include transboundary aspects and the value of ecosystems, and that involve local populations in the process. This will support the sustainable management and ecological integrity of the landscapes.

The management of protected areas within the Rio Campo and Monte Aï?n landscapes will be improved, and illegal poaching and logging will be decreased with the collaboration and participation of local communities. This will include capacity building for key stakeholders, development and implementation of enhanced management plans, enhancement of protected area resources and infrastructure to facilitate monitoring and management, and participatory monitoring and enforcement of laws and policies governing protected areas.

In addition, the GEF resources will have a significant impact on the development of local alternative livelihoods to conserve forests in Rio Campo and Monte Aï?n landscapes. Capacity building for local entrepreneurs and community members, and a small grants programme that focus on issues related to NTFP ventures, eco-tourism, sustainable agricultural and fishing practices for forest community

entrepreneurs will enable this. The private sector logging companies will be included in multi-stakeholder consultations and training to contribute to sustainable logging practices in the target landscapes.

These efforts in Equatorial Guinea will be coordinated with other country projects through collaboration on best practices and lessons learned to ensure impacts at the regional Congo Basin level.

The incremental cost reasoning and the expected contributions from the baseline, the GEF financing and co-financing for each component is described in the table below.

<u>Business-as-usual scenario (without the GEF resources)</u>	<u>Incremental scenario (with the GEF resources)</u>
Component 1: Integrated and improved land use planning, policies, and management	
<p>Protected areas and forest ecosystems will remain at risk of being opened to unsustainable production activities and impacted by infrastructure projects designed without taking biodiversity aspects into consideration. The absence of land use plans and coordinated and integrated decisions regarding landscapes will prevent the achievement of the country's objectives and international commitments regarding biodiversity protection, forest cover, and reduction of carbon emissions. This will result in ongoing degradation of natural resources outside and within protected areas, particularly through infrastructure development and unsustainable logging and agricultural practices.</p>	<p>Under component 1, cross-border exchanges with Cameroon and Gabon will be carried out and the process of signing a transboundary agreement with Cameroon (Rio Campo-Campo Ma'an) will be promoted. The development of land use plans at local levels will be supported. Capacity of the relevant government institutions involved in land use planning processes will be built through training based on needs identification. The necessary technical inputs for improved decision-making on land use planning will be developed to ensure that the value of ecosystems and the rights of local communities are taken into consideration in land use planning processes. Communities will be involved in land use planning processes through the development of pilot community based land use plans.</p>
Co-financing: 8 640 000 USD	GEF funds: 1 319 040 USD
Component 2: Ensuring the long-term viability of forests providing important habitat to endangered species and critical ecosystem services	
<p>The protected areas of the target landscapes will continue to operate minimally. Limited human, financial and technical capacities will lead to limited positive impacts on biodiversity and combatting illegal activities. Apprehending illegal loggers and poachers will continue to be a challenge with few eco-guards and field missions by managers.</p>	<p>This component will enable a better functioning and efficiency of the protected areas of the targeted landscapes. Updated management plans, an increased presence of eco-guards and management teams on the ground, as well as collaboration with communities and other law enforcement agents for patrolling, will lead to a decrease in illegal activities such as logging and poaching. Capacity building of the protected areas personnel will ensure more effective management of patrols as well as relationships with local communities. The standardized and systematic monitoring and evaluation of natural resources conservation interventions and of protected areas management effectiveness in promoting biodiversity and ecosystem functioning through the METT tool will enable a permanent increase of knowledge. As a result, the practices implemented in the target landscapes for efficient protection of natural resources will improve continuously.</p>

<u>Business-as-usual scenario (without the GEF resources)</u>	<u>Incremental scenario (with the GEF resources)</u>
Co-financing: 11 610 000 USD	GEF funds: 1 670 940 USD
Component 3: Reduced community and production sector impacts on important forest services in landscapes	
The natural resources of the landscapes, and of the protected areas, will continue to be used unsustainably by local communities and the private production sector. This will lead to resource degradation and reduced ecosystem services.	This component is focused on ensuring that local communities are involved in developing alternative sustainable livelihoods that suit their needs, through training and a small grants program. This will mean less dependence and unsustainable use of natural resources within the landscapes, thus reducing pressure and impacts on forest ecosystems. In addition, the private sector will be involved and consulted to participate in multi-stakeholder platforms and consultations leading to more sustainable logging practices and forest management through an improved policy and regulations framework. Overall these activities will lead to reduced impacts and enhanced ecosystems.
Co-financing: 5 900 000 USD	GEF funds: 1 575 580 USD
Component 4: Knowledge Exchange, Partnership, Monitoring and Assessment	
The resources put in the other 3 components will have an impact limited in space and time without a knowledge management component.	Component 4 will ensure that the successes and lessons learnt of the project are capitalised and disseminated across the landscapes, and at national and regional level through a variety of communication tools. Exchanges with the regional initiative and other country projects of the Congo Basin Impact Program will take place. Wider communication to all levels of stakeholders, from local communities to national government officials on the importance of sustainable use and management of natural resources will lead to heightened awareness and consideration of these environmental topics. This will slow down some of the threats to the country's forest ecosystems so that future generations can benefit from the natural resources and associated services.
Co-financing: 3 020 000 USD	GEF funds: 493 140 USD

6) global environmental benefits (GEFTF) and/or adaptation benefits (LDCF/SCCF)

The project will contribute to avoiding, reducing, and reversing further forest degradation and deforestation, by supporting stakeholders to sustainably manage the two project landscapes through an integrated, ecosystem-based approach. Among the anticipated benefits:

? The project will contribute to the conservation of globally significant biodiversity, i.e. part of the forests of the Congo Basin that are of critical importance at the global level and extremely rich in flora and fauna, through improved management effectiveness of 382,000 ha of protected areas. It will also lead to the sustainable use of this globally significant biodiversity.

? It is anticipated that the above interventions will lead to avoided GHG emissions and carbon sequestered of 66,445,072 tCO₂eq, due to reduced forest degradation and deforestation.

? The project will also generate sustainable co-benefits due to a reduction in the degradation of forest ecosystems and their functions. This will contribute to maintaining species richness and trophic dynamics; help maintain and improve the ecosystems' capacities to ensure multiple ecosystem goods and services; and provide increased opportunities for food security and livelihoods.

? As a result of this project, 584,500 ha, will be under improved practices and management. The project will contribute to the elaboration of pilot community level land use plans. The protected areas will undergo site-level governance assessments as well as a METT assessment, the results of which will be used as a baseline to build on and a tool to guide improved practices.

? The project will have important socio-economic benefits, and adaptation benefits, for an estimated 20,000 women and men living in the target landscapes, by maintaining or enhancing the natural resource base on which their livelihoods rely, as well as by enhancing income generating opportunities linked to the conservation and sustainable use of the target landscape. Through the realization of its knowledge management and communication strategy, the project will further build awareness and capacity of an anticipated 800 people (women and men) at the national and regional level.

? The improved management practices in protected areas, the introduction of sustainable alternative livelihood options, increased awareness and capacity building will together improve the resilience of forest ecosystems and local communities in the project landscapes to climate change.

? Finally, the project will improve understanding and increase awareness on the many benefits of sustainable forest management as well as on landscape dynamics and the linkages between the environment and lifestyle (food, energy, economy, culture), the impacts of climate change and the importance of biodiversity and ecosystem services. The project will work to raise the awareness of stakeholders at multiple levels on issues affecting the integrity of ecosystems, the delivery of the goods and services they provide, and human well-being. The project will also support numerous learning opportunities and experiences to better understand how the issues that affect the social and environmental systems of project landscapes can be appropriately and sustainably managed. Finally, the project will work to ensure the approaches tested through this project are evaluated and lessons learned are shared at the landscape, cross-landscape, national, regional and global scales.

7) innovativeness, sustainability and potential for scaling up

Innovation

The project is innovative in the integrated approach it brings to land use planning and management. It will promote increased cross-border cooperation through cross-border multi stakeholder dialogues on sustainable land use planning and policy issues with transboundary dimensions. Furthermore, the necessary technical inputs for improved decision-making on land use planning will be developed to ensure that the value of ecosystems (natural capital accounting) and the rights of local communities are taken into consideration in land use planning processes.

In addition, governance aspects have been considered and integrated: a site-level governance assessment will be carried out, in line with the IUCN Green List Standard of Protected and Conserved Areas, to identify enabling conditions to guarantee land tenure rights, access to natural resources and appropriate benefits for forest dependant people in land use planning processes. The results of these

assessments will be communicated to support decision-making on governance and land use planning and management of natural resources.

Sustainability

In order to achieve sustainability, the project approach is built around:

- i) including local communities in decision-making and governance of natural resources,
- ii) the integration of economic considerations,
- iii) capacity building,
- iv) raising awareness and improving knowledge management of stakeholders, and,
- v) strengthening cross-sectoral and inter-institutional collaboration and coordination.

-

Financial and economic sustainability: INDEFOR-AP's capacities for researching, soliciting and obtaining funds other than government funds (from international organisations for example) will be developed and strengthened by the project. An audit of the finances of INDEFOR-AP will lead to identifying opportunities for improved management of funds (such as optimising use of existing funds). Recommendations will be made based on the results of the audit and INDEFOR-AP will be supported and guided in implementing these recommendations. These activities will lead to an overall better financial health and governance of INDEFOR-AP, as well as increased funds for the management of protected areas.

In addition, the project's communication to high level decision-makers on environmental and natural resources issues should also lead to more important budgets being allocated to INDEFOR-AP and INCOMA post-project. Furthermore, the GEF 4 project, the Regional Project for Sustainable Financing of Protected Areas in the Congo Basin, is working on developing sustainable financing mechanisms for the protected areas of Equatorial Guinea. The project will also lay foundations for eco-tourism development in these areas, thus bringing in additional finances. With additional finances INDEFOR-AP will be able to sustain activities implemented in the landscapes, and in protected areas in particular.

Concerning the development of alternative livelihoods, the UNDP will continue the micro-projects development activities through the small grants program once the GEF project ends, thereby ensuring sustainability of this outcome. That said, the aim is for the micro-projects to be economically sustainable beyond the support of the project (i.e, once the project is over, the initiatives will carry on).

Institutional sustainability:

The IUCN has been chosen as the project's executing agency for several reasons, one of them being the absence of reliable partners and weak institutional capacity. The project will therefore focus on strengthening the stakeholders and institutional abilities at all levels (national and local). Indeed, it has a number of activities aimed at building institutional capacity of existing stakeholders. As already mentioned, INDEFOR-AP and INCOMA in particular will be supported in building capacity on improved financial management, to develop the potential to become a future executing agency. Several activities throughout the project's logical framework will bring stakeholders together (inter-institutional and cross-sectoral) to kick-start collaboration and cooperation processes. The project will promote multi-stakeholder activities such as cross-border, national and local level land use planning, natural resources related law enforcement, and sustainable forest management. Communities will

participate in these activities as much as possible. Furthermore, the IUCN will collaborate with local and national stakeholders to implement activities on ground, guiding and accompanying them, and building capacity as it does so (through the project staff). This will ensure ownership of project activities by the relevant stakeholders and thus promote continuity of activities post project.

Potential for scaling up

Many project activities have been designed in such a way that they can be replicated. The stakeholder capacities built on land use planning will be put to use in the long term as land use plans will have to be regularly reviewed and updated. The development of pilot community land-use plans will be done to enable replication to a wider number of communities in the landscapes, with little costs, and with the aid of peer to peer training and experience sharing between communities.

Through component 2, INDEFOR-AP will develop capacities at all levels: top management, protected areas management, operational personnel. This will allow the institute to implement the methods and tools developed during project activities, in protected areas outside of the project landscapes (8 of the country's 13 protected areas are not included in the GEF project but could indirectly benefit from it). This is the case for the use of the METT, the creation of community patrol teams, the overall increased participation of communities in the governance of protected areas, and the collaboration with law enforcement authorities.

The alternative livelihoods developed in output 3.1.1 will likely benefit to more than just those that participated directly in the micro-projects scheme. Community members may replicate micro-projects themselves through experience sharing, and the economic dynamic created will benefit the wider communities. In addition, the capacities strengthened through the scheme (of community members and civil society organisations) will make future replication easier. A similar effect can be expected for eco-tourism initiatives developed.

Other project activities that will be replicable if successful include the human-wildlife conflict mitigation measures, and the multi-stakeholder landscape platform.

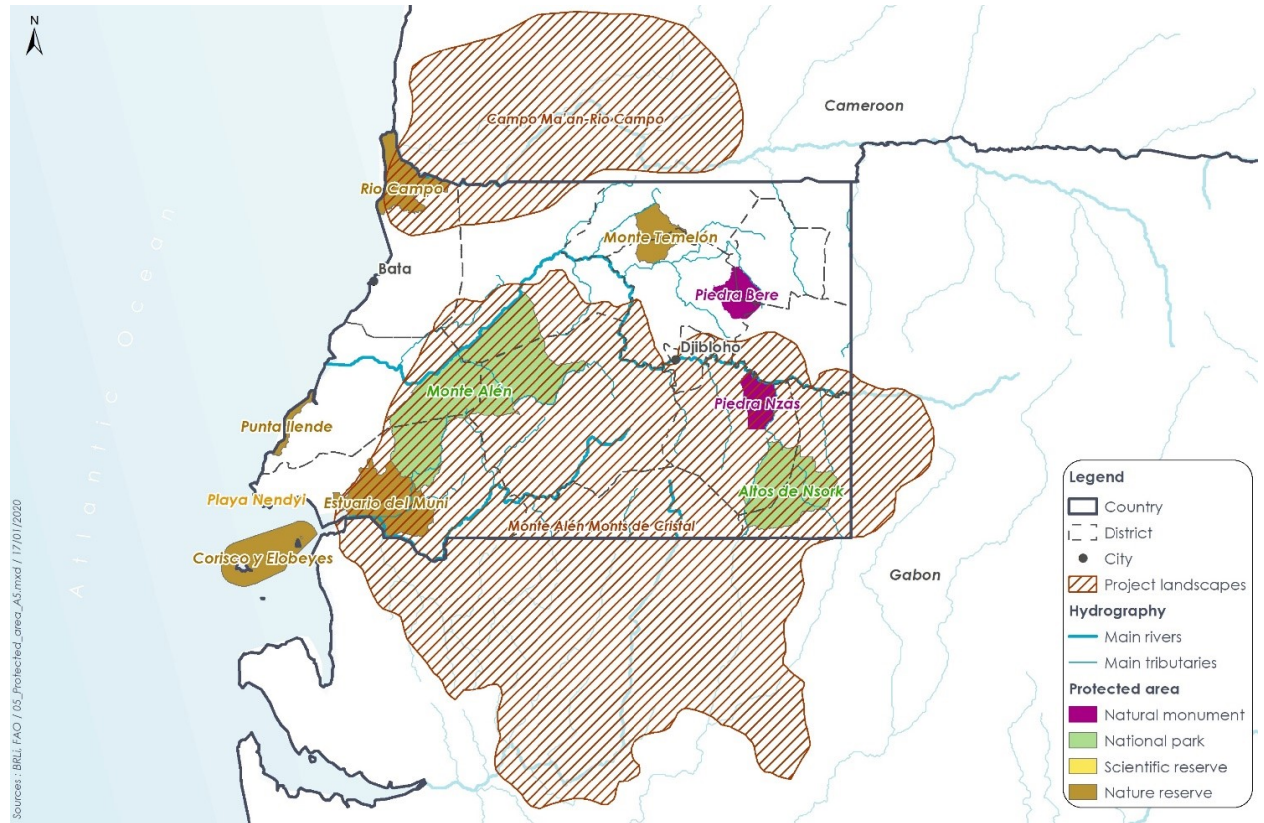
The knowledge generated under output 1.2.1 will provide an evidence base to identify, prioritise and design the most appropriate and cost-effective interventions for biodiversity conservation and improved land-use planning. Furthermore, a website will be created for INDEFOR-AP to facilitate access to this evidence-based knowledge. Webpages will be created and organised in a user-friendly manner. For example, guidelines, technical reports, progress reports, evaluation reports and lessons learned from the project will be available on this website. This will facilitate the sharing of information between national and local government authorities, project managers, NGOs, CSOs and community leaders. Information will also be communicated to the CBSL Regional project to be shared more widely. This will promote the replication and upscaling of project activities beyond the project's intervention areas and implementation phase.

The standardised M&E system to be established under output 5.1.2 will build the case for collaborative and sustainable resource management. The benefits obtained at the environmental, social, and economic levels from the interventions of the project evaluated will be an important tool to convince government stakeholders and local communities in the country, and in the wider Congo Basin region, to embark towards conserving and sustainably managing biodiversity and forest ecosystems through an inclusive landscape approach, effective land use planning, enhanced management of protected areas and sustainable livelihood options.

1b. Project Map and Coordinates

Please provide geo-referenced information and map where the project interventions will take place.

The geographical scope of the project covers more than half of Equatorial Guinea and has been defined as two forest landscapes: Monte Alen and Rio Campo. These landscapes include the provinces Litoral, Centro Sur, Wele Nzas and Djibloho, which encompass 11 districts. A map of the project landscapes is presented below.



Detailed maps of the five protected areas of the project landscapes where project activities will be implemented are provided in Annex E.

The 5 protected areas present in the landscapes will be project implementation sites:

Protected Area	Latitude	Longitude
Monte Alen National Park	1°24'01.61"N	10°17'258.76"E
Altos de Nsork National Park	2°20'06.67"N	9°49'00.79"E
Piedra Nzas Natural Monument	1°05'02.74"N	9°42'00.15"E
Rio Muni Nature Reserve	1°24'59.18"N	11°04'10.84"E
Rio Campo Nature Reserve	1°08'04.68"N	11°16'01.13"E

1c. Child Project?

If this is a child project under a program, describe how the components contribute to the overall program impact.

The Equatorial Guinea child project will directly contribute to the Congo Basin Sustainable Landscape Impact Program on Sustainable Forest Management and its aims to produce significant global environmental benefits and national socio-economic benefits. The project is aligned with the program objective "to catalyze transformational change in conservation and sustainable management of the Congo Basin through landscape approaches that empower local communities and forest dependent people, and through partnerships with the private sector", and contributes to all four of the programs project components and numerous of its outcomes. Specifically, it contributes to program component 1 by strengthening comprehensive and integrated land use planning at various levels and taking into account natural capital accounting in doing so. The project will build on the land use planning and management guides developed by COMIFAC, and will ensure land use planning is undertaken in a participatory and cross-sectoral manner. It contributes to component 2 by improving management and governance in protected areas of the landscape, in collaboration with local communities. It also contributes to program component 3 in supporting local communities for the development of alternative livelihood options, promoting eco-tourism development and engaging the private sector for sustainable forest management. Furthermore, it contributes to program component 4 by ensuring effective coordination, M&E and knowledge management. By sharing knowledge and fostering exchange with other countries in the Congo Basin, the project will contribute to increased program impact. The participation of women is encouraged and ensured throughout the project activities, in line with the impact program.

2. Stakeholders

Select the stakeholders that have participated in consultations during the project identification phase:

Civil Society Organizations Yes

Indigenous Peoples and Local Communities Yes

Private Sector Entities Yes

If none of the above, please explain why:

Please provide the Stakeholder Engagement Plan or equivalent assessment.

The Stakeholder engagement plan and analysis is attached to this submission.

- The project will work in close collaboration with a wide a range of stakeholders: local communities, provincial and national government agencies and departments, civil society organizations, national and international organizations, regional initiatives, and the private sector in Equatorial Guinea. This collaboration was initiated during the PPG phase through one-on-one consultations and through the organisation of the inception and validation workshops, to which the stakeholders were invited. The consultations were undertaken between the 9th and 23rd of November 2019 and the 19th and 24th of February 2020. The inception and validation workshops were organised to ensure active involvement of all stakeholders in project design and preparation, which is crucial for project ownership by

stakeholders. Local stakeholders were included in project design through the organisation of focus group discussions to discuss project objectives and activities and assess their interest in the project (see Appendices 9.2, and 9.3 of the ProDoc for the methodology of the consultation and the list of meetings held).

-

- The project management team will ensure that this direct participation of national and local stakeholders is continued throughout the implementation phase of the project. Indeed, a number of stakeholders will be directly involved in activity implementation. To facilitate continuous engagement, a MoU will be signed between IUCN and each stakeholder that will participate substantially in project implementation. Details of stakeholder engagement during the design phase and planned engagement during the implementation phase are provided in the Stakeholder Engagement Plan in annex.

-

The covid-19 pandemic will certainly affect the stakeholder engagement elements of the project. The project will put in place certain measures to mitigate this to a certain degree. However, the risks associated with the pandemic may not be fully addressed by the project.

Depending on the sanitary measures in place at the time of project implementation, certain stakeholder engagement activities that require stakeholders to physically meet may have to be postponed to a later date (assuming that the pandemic will be under control during the second half of the project). Other stakeholder engagement activities may be held at a distance, through conference calls, if the situation allows it (all relevant stakeholders are equipped with the necessary equipment, and good working internet connections). Some situations may allow for meetings to be held, but with a smaller number of participants, in which case the number of meetings may have to increase, in order to engage all relevant stakeholders. When in-person meetings are required and able to take place, the project will ensure that all the necessary sanitary measures are taken to limit virus propagation (social distancing, wearing face masks, providing hand gel), and will sensitise participants to them.

- With the sanitary restrictions and measures evolving on a daily basis, it is not possible today to plan exactly how each of the stakeholder engagement interventions will need to take place. The project will have to operate with an adaptive approach, adapting activities to the evolving context.

In addition, provide a summary on how stakeholders will be consulted in project execution, the means and timing of engagement, how information will be disseminated, and an explanation of any resource requirements throughout the project/program cycle to ensure proper and meaningful stakeholder engagement

- The project will work in close collaboration with a wide a range of stakeholders: local communities, provincial and national government agencies and departments, civil society organizations, national and international organizations, regional initiatives, and the private sector in Equatorial Guinea. This collaboration was initiated during the PPG phase through one-on-one consultations and through the organisation of the inception and validation workshops, to which the stakeholders were invited. The consultations were undertaken between the 9th and 23rd of November 2019 and the 19th and 24th of February 2020. The inception and validation workshops were organised to ensure active involvement of all stakeholders in project design and preparation, which is crucial for project ownership by

stakeholders. Local stakeholders were included in project design through the organisation of focus group discussions to discuss project objectives and activities and assess their interest in the project (see Appendices 9.2, and 9.3 of the ProDoc for the methodology of the consultation and the list of meetings held). The project management team will ensure that this direct participation of national and local stakeholders is continued throughout the implementation phase of the project. Indeed, a number of stakeholders will be directly involved in activity implementation. To facilitate continuous engagement, a MoU will be signed between IUCN and each stakeholder that will participate substantially in project implementation. Details of stakeholder engagement during the design phase and planned engagement during the implementation phase are provided in the Stakeholder Engagement Plan in annex.

Select what role civil society will play in the project:

Consulted only; Yes

Member of Advisory Body; Contractor;

Co-financier;

Member of project steering committee or equivalent decision-making body;

Executor or co-executor;

Other (Please explain)

3. Gender Equality and Women's Empowerment

Provide the gender analysis or equivalent socio-economic assesment.

Gender-sensitive indicators have been developed for the project but have not been integrated in the project results framework so as not to ?burden? it with too much information. Indicators have instead been presented in a standalone gender action plan attached.

The gender action plan is attached to this submission

Does the project expect to include any gender-responsive measures to address gender gaps or promote gender equality and women empowerment?

Yes

Closing gender gaps in access to and control over natural resources; Yes

Improving women's participation and decision making Yes

Generating socio-economic benefits or services or women Yes

Does the project's results framework or logical framework include gender-sensitive indicators?

Yes

4. Private sector engagement

Elaborate on the private sector's engagement in the project, if any.

The forestry private sector will participate in relevant training sessions and multi-stakeholder dialogues and platforms on sustainable forest management and best logging practices.

5. Risks to Achieving Project Objectives

Elaborate on indicated risks, including climate change, potential social and environmental risks that might prevent the project objectives from being achieved, and, if possible, the proposed measures that address these risks at the time of project implementation.(table format acceptable):

During the PGG missions, a risk analysis was conducted based on site visits and consultations with stakeholders. A number of risks were identified for this project - external risks, technical & operational risks and environmental & social risks. Measures to mitigate these risks have been integrated into project design as demonstrated in the table below. References to relevant outputs/activities are provided in the table below.

Risk Description	Level	Mitigation measure(s)
External risks		
Infrastructure, forest or mining activities developed throughout the landscapes outside of any land use planning process	High	Component 1 of the project aims at developing integrated and improved land use planning and management. The component's activities will include stakeholders from all sectors and institutions related to land use, including those that make important decisions in allocating forest concessions or approving infrastructure development. These stakeholders will be involved in component 1 activities as much as possible, they will be sensitized and trained on the impacts of their professional activities on the country's natural resources (outputs 1.1.1, 1.2.2, and 1.3.2), and how they should take these into consideration. They will also contribute to the land use planning processes (outputs 1.3.1 and 1.3.2). Collaboration between stakeholders will be promoted.
No political willingness to support a transboundary agreement between Cameroon and Equatorial Guinea	Low	This is a low risk as past experience has shown that both governments have already attempted to develop such an agreement, showing that there is some willingness. The project will contribute to bringing this transboundary collaboration agreement back to the forefront of the political agenda of the relevant ministry through activities of output 1.1.1.

<p>No political appropriation to develop land use plans at landscape level (no appropriation of the 'landscape' concept)</p>	<p>High</p>	<p>The landscape concept does not exist as such at the political level in Equatorial Guinea, it is not part of the legal framework of the organisation of the national territory (as are provinces, districts and municipalities for example). Protected areas are already accepted and recognised as an integral part of the territory at national level (although not always fully respected), but this is not the case for landscapes. For activities at landscape levels to be effective, the landscape concept needs to be integrated by all relevant stakeholders. The project will regularly present the landscape concept in technical briefs addressed to stakeholders (activity 4.2.1.2), and during capacity building sessions (output 1.2.2). Landscape level actions will be promoted through the Monte Alen landscape multi-stakeholder platform (output 1.3.2).</p>
<p>Fiduciary and corruption risk</p>	<p>High</p>	<p>There is a relatively high risk of corruption in Equatorial Guinea. To mitigate the risk of project funds being diverted, the project will be executed directly by the IUCN (Cameroon office). IUCN procedure for the disbursement of funds will be strictly followed. Stakeholders being paid to implement activities will receive the funds in stages, after having justified the expenses and presented the work done. In addition, the project staff will be hired by the IUCN independently of the Equatorial Guinea government. The mid-term project evaluation is an additional opportunity to monitor the appropriate use of funds.</p>
<p>Absence of reliable partners</p>	<p>Medium</p>	<p>As presented in the baseline, there is a limited number of reliable and experienced partners operating in Equatorial Guinea on issues related to the management of natural resources. As a result, the only low risk option for the institutional framework is to have the IUCN as executing agency. However, in order to partly address this issue, the project has a number of activities aiming to build capacity of existing stakeholders (output 1.2.2, activities 2.1.2.4, and 2.1.4.3). INDEFOR-AP and INCOMA in particular will be supported in building capacity on improved financial management, so as to strive towards becoming an executing agency in future (output 2.1.1).</p>
<p>Private sector not interested in diminishing their impact on forest ecosystems</p>	<p>High</p>	<p>The project will strive to make the forestry private sector aware of the necessity of moving towards more sustainable forest management practices through multi-stakeholders dialogues. It will also improve law enforcement to ensure compliance of the private sector with the law, which will be a first step towards sustainable forest management (2.1.4.3).</p>
<p>Lack of effective participation of local communities in project interventions</p>	<p>Medium</p>	<p>To ensure effective participation of local communities a number of activities geared towards the inclusion and consultation at local levels have been proposed:</p> <ul style="list-style-type: none"> - In terms of land use planning, pilot land use plans will be developed at community level, for input in the development of a national land use plan. Local communities will also be represented in the multi-stakeholder landscape platform - Specific governance related activities have been planned to promote the involvement of local communities in protected areas? governance (SAPA, SAGE and METT). <p>A specific gender action plan has been developed to ensure active participation and consultation of women.</p>

Widespread health crisis (epidemic diseases)	Medium	<p>Zoonotic diseases are infectious diseases caused by a pathogen that has jumped from a non-human animal (usually a vertebrate) to a human. These diseases arise from human contacts with wildlife or livestock. These transfers of pathogens take place as a result of human activities, such as illegal wildlife trade and land use change. Land use change is a key driver of emerging zoonotic diseases. Deforestation, habitat fragmentation and an expanding agricultural frontier increase the contacts between humans and other animals, potentially increasing the chances of zoonoses emerging and spreading. The project will contribute to mitigation of zoonotic diseases by supporting land use planning processes and ensuring the long-term viability of forests providing important habitat to endangered species and critical ecosystem services.</p> <p>Such risks cannot be avoided by the project directly. However, the project can adapt to such circumstances by carrying out as many activities as possible at a distance, without putting anyone at risk. Other on site activities may still be carried out by providing personnel with appropriate protective equipment if the situation allows.</p> <p>See covid-19 action framework below for a more detailed analysis of covid-19 related risks and opportunities.</p>
Strong climate variability during project lifetime negate positive effects of project interventions	Medium	<p>Climate change and variability are recognized as environmental problems in the project landscapes, and are expected to continue to impact these areas. Efforts to conserve the forests of the PAs through activities in component 2, as well as to provide alternative livelihood activities for the local population through component 3 will help to build the resilience of local ecosystems and communities.</p> <p>See the climate risk assessment below for more detail.</p>
Technical & operational risks		
Low level of cooperation and coordination between stakeholders (e.g. amongst sectors)	Medium	<p>Several activities throughout the project's logical framework will bring stakeholders together (inter-institutional and cross-sectoral) to kick-start collaboration and cooperation processes. The project will promote multi-stakeholder activities such as: cross-border land use planning (output 1.1.1), local level land use planning (output 1.3.1), natural resources related law enforcement (output 2.1.4), and sustainable forest management (output 3.2.1).</p>
Absence of sustainable funding mechanisms for the management and maintenance of protected areas post project	High	<p>This risk is already being addressed by another GEF project (the Regional Project for Sustainable Financing of Protected Areas in the Congo Basin). Nevertheless, in the project framework, INDEFOR-AP will be supported to enhance the management of its funds in order to get more out of the funds they currently receive. It will also receive capacity building for raising funds from sources other than the government. In addition, lobbying through the development and communication of technical briefs to decision makers throughout the project timeline will aim to lead the government to investing more funds into its protected areas.</p>

Values of the protected areas network and ecosystem services are not taken into consideration in the land use planning processes	Medium	Lack of knowledge and awareness on the importance and value of the protected areas and the country's forest ecosystems is what leads to insufficient consideration in decision-making by government stakeholders. A number of specific studies will be carried out to determine the real value of these ecosystems and how best they can be considered in land use planning processes (output 1.2.1). These studies will be presented in clear and concise technical briefs, getting the message to relevant government stakeholders and raising awareness. The capacity building sessions will also cover these topics (output 1.2.2).
Institutional weakness: weak implementation capacity at local and institutional levels	High	National capacities to implement some of the project activities are limited. This is one of the reasons why the IUCN has been chosen as the project's executing agency. However, this does not mean that the IUCN will implement all activities. It will collaborate with local and national stakeholders to implement activities on ground, guiding and accompanying them, and building capacity as it does so (through the project staff). Where capacities are not available locally for the implementation of activities (for example carrying out certain specific studies or training sessions), the project will call for international services through calls for tenders. In addition, the project will contribute to building institutional capacity through various capacity building sessions.
Low compliance with natural resource laws and regulations and/or ineffective compliance mechanisms	Medium	Low enforcement of laws and regulations with regards to natural resources is currently a reality in Equatorial Guinea. The project will partly address this through building capacity of law enforcement personnel, many of which are not currently fully aware of the legal framework. It will also promote greater collaboration between INDEFOR-AP and law enforcement agencies (output 2.1.4). Local communities will be sensitised (output 4.1.1) on the laws and regulations to abide to (as many are not well aware of these), and will be supported to develop alternative livelihoods (output 3.1.1).
Delays in work plan and procurement plans validation and disbursements	Medium	The implementation of the IUCN procedures should guarantee the fluidity of administrative and project management. It must be noted however that transferring funds to Equatorial Guinea can be a long and cumbersome process. This is a risk that should not be minimised.

Covid-19 action framework

Analysis of risks

The covid-19 pandemic presents a number of risks that could affect the project's implementation and impacts.

Risks	Mitigation measures
International and regional consultants and organisations are not able to travel to Equatorial Guinea to carry out the various studies and capacity building activities	<p>Various possibilities according to the situation:</p> <ul style="list-style-type: none"> - Activities are postponed to a later date in the project, when travel will once again be allowed - Local experts are recruited to work in pair with international experts: the local experts carry out the field work, guided by and with the input of international experts at a distance, thereby building capacity of local experts in the process

Equatorial Guinea stakeholders are limited or not able to travel for the various cross-border exchanges planned and the CBSL impact programme exchange activities	<p>Various possibilities according to the situation:</p> <ul style="list-style-type: none"> - Activities are postponed to a later date in the project, when travel will once again be allowed - A smaller number of stakeholders travel, thereby decreasing the covid risks - Activities are carried out at a distance with the help of visio-conference technology
Sanitary measures limit the possibility of stakeholders to meet and limit stakeholder and project staff mobility	<p>Various possibilities according to the situation:</p> <ul style="list-style-type: none"> - Activities are postponed to a later date in the project, when meetings and mobility are once again made easier - Meetings and consultations are carried out through a combination of means, depending on the types of stakeholders involved and the objective of the meetings: a higher number of smaller meetings (instead of a few large meetings) are carried out, meetings are carried out at a distance with the help of visio-conference technology, ?
The economic impacts of the pandemic lead affected local communities to put increased pressure on natural resources (increased illegal logging and hunting).	<ul style="list-style-type: none"> - Put increased efforts into project activities that contribute to developing alternative livelihoods

Analysis of opportunities

The covid-19 crisis provides a number of opportunities to contribute to reducing the risk of future zoonotic and infectious diseases appearing. Indeed, the GEF project interventions will contribute to:

- Limiting forest fragmentation, and ecosystem degradation and destruction
- Promoting sustainable land uses that limit deforestation
- Addressing human-wildlife conflicts, and therefore human-wildlife contacts
- Developing alternative livelihoods to decrease local communities' dependence on hunting and logging
- Promoting sustainable natural resources management protecting natural capital

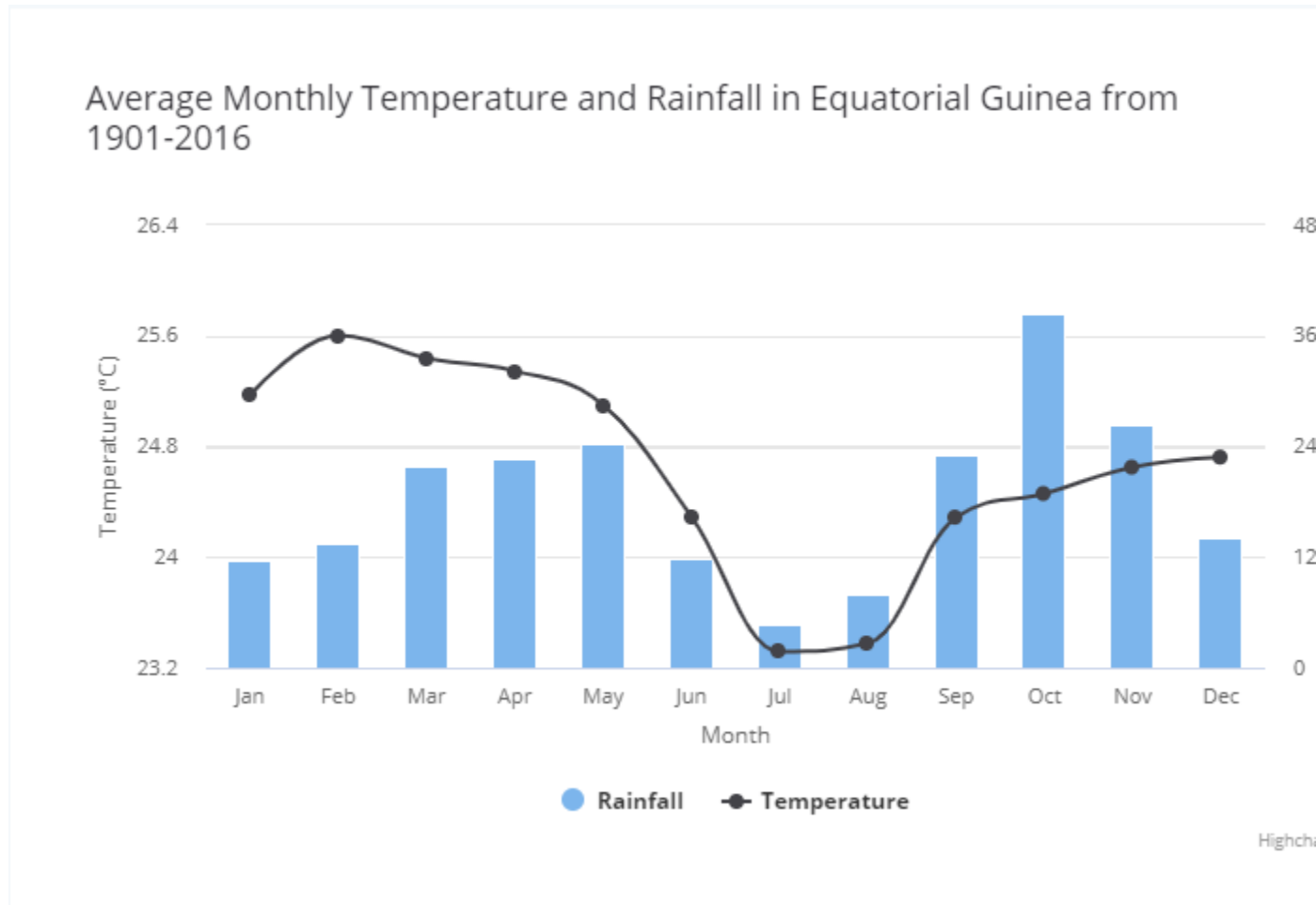
These opportunities will generate GEBs and pave the way towards a healthier environment, and therefore help mitigate future pandemics.

Climate risk screening

As stated in the country's INDC, Equatorial Guinea, lacking meteorological stations for the measurement and evaluation of climatic factors (agrometeorology, hydrometeorology, wind isobars, etc.), is limited in its knowledge of climate change and its effects. Meteorological data is scarce for the country, as such, the climate risk screening is based on data from the World Bank's Climate Change Knowledge Portal, as well as data at regional Congo Basin level.

The climate of Equatorial Guinea is categorized as "tropical rainforest" according to Köppen, with features of "tropical savannah" at its easternmost end. The geographical conditions that significantly modify the

climate of the territory in its continental part (Muni River) are the existence of the coast and the relief of the southern portion, mainly in the southeastern part where Monte Mitra is located (1200 m). The mean annual temperature is 24.65 °C, and mean annual precipitation is 2205.34mm, with a short "dry" season in July and August.



Climate models, although varying greatly, indicate that temperatures will rise. There is uncertainty on the future evolution of precipitations, with some models predicting increases, whilst others predict decreases. However, rainfall will certainly change in terms of timing, intensity and duration, with extreme rainfall events likely to increase and average rainfall less uniformly distributed, with an increased tendency for dry spells (USAID, 2018).

	Observed trends	Climate projections
Temperature	24.65 °C (mean annual)	Mean annual temperature will rise by 1.62°C (1.22°C to 2.29°C) in 2040-2059 (RCP 8.5, Ensemble)

Rainfall	2205.34mm (mean annual)	Annual precipitation will rise by 105.43mm (-328.01mm to 476.72mm) in 2040-2059 (RCP 8.5, Ensemble)
-----------------	-------------------------	---

Rising temperatures, prolonged dry spells, increased extreme weather events will lead to the potential following risks over the next 30 years:

Climate related risk	Adaptive capacity	Rating the risks	Measures to manage the risks
Decrease in biodiversity and change in forest species composition due to changes in temperatures and precipitation	Overall limited adaptive capacity: - Stakeholders both at local and national level have no to limited capacity to collect and use information related to climate risks: Equatorial Guinea has no meteorological stations and very limited meteorological data is available	Probability: Moderate Impact: Moderate Risk: Moderate	GEF project interventions contribute to climate change mitigation through reducing deforestation and ecosystem degradation, and contributing to sustainable management of natural resources. Incorporate climate information into landscape-level conservation, land-use planning, and protected area management: ensure that local land use plans and PA management plans developed integrate climate risks (outputs 1.3.1 and 2.1.2).
Extreme rain and wind storms causing tree-falls, flood risk and soil erosion	- As a result there are also few institutions that exist and have the resources (financial and technical) and capacity to support local stakeholders (communities, private sector, CSOs, government etc) to prepare and respond to climate impacts	Probability: High Impact: Moderate Risk: Moderate	Strengthen institutions that are responsible for conservation and management of ecosystems and natural resources (INDEFOR-AP and INCOMA), including their ability to incorporate climate change into their activities (activities of component 2). Encourage partnerships between governments and private business to protect forests and promote climate change mitigation (output 3.2.1).
Loss/shift of habitats outside of PAs, putting endangered species and wildlife in possible conflict with human settlements		Probability: Low Impact: High Risk: Moderate	Maintain large intact landscapes and protect key, representative habitats within the landscapes (i.e. PAs) (activities of component 2). Conserve biodiversity and manage natural resources in ways that maintain their long-term viability (activities of component 2).

Changes in soil fertility and in crop yield: potential increases, reductions or failure/loss	Probability: Moderate Impact: Moderate Risk: Moderate	Support the development of alternative livelihoods not solely dependant on agriculture and consider potential climate impacts when supporting such alternatives (output 3.1.1).
Agricultural production and human health may be affected by the spread pathogens, parasites, and diseases due to higher temperatures.	Probability: Moderate Impact: Moderate Risk: Moderate	In developing alternative livelihoods, promote climate-smart agricultural practices, including agro-forestry systems (output 3.1.1). Increase conservation outside of protected areas, and incorporate mixed natural systems (e.g., agroforests) (outputs 3.1.1 and 1.3.1).
Increased food insecurity	Probability: Moderate Impact: Moderate Risk: Moderate	Seek information from women, and local people, who are often the custodians of local knowledge about wild plants, seeds, and other elements of biodiversity (outputs 3.1.1, 3.1.2 and 1.3.1).

The Congo Basin forests, including forests in Equatorial Guinea, are vulnerable to the impacts of climate change, whilst also being an important buffer to mitigate its effects in the region and globally. Conserving and protecting them is therefore a major step towards climate change mitigation (although not sufficient).

Overall risk

It is important to note that the project has an overall high risk which must not be underestimated although a number of mitigation measures have been put in place to address the risks. In addition to the risks presented in the table, it must be noted that this is a highly ambitious project, in a high risk environment, covering a wide range of topics, and aiming to achieve its goal over a period of just 4 years. This project alone may not be able to fully achieve the set objectives but it will complement and enhance the existing initiatives, as well as set the stage for further projects, and create the enabling environment to collectively bring about the necessary changes, and thus accomplish the preservation of the Congo Basin forests.

6. Institutional Arrangement and Coordination

Describe the institutional arrangement for project implementation. Elaborate on the planned coordination with other relevant GEF-financed projects and other initiatives.

National decision making and planning:

The Project Steering Committee (PSC): The PSC will be the main decision-making platform of the project. It will be responsible for guiding the project implementation, providing vision, advising the Project Coordinator and its Project Management Unit (PMU) when needed, and validating reports, financial and technical reports in particular. Chaired by a representative of the Ministry of Agriculture, Livestock, Forestry and the Environment, proposed PSC members will include Directors of the relevant Ministry divisions (environment and conservation, management and coordination, GEF focal point), representatives of other ministries (i.e. The Ministry of Finance, Economy and Planning, the Ministry of Infrastructure and Public Works?), representatives of the provincial government (i.e. Provincial Secretary or Environment Officer of the province) and representatives of the co-financiers. IUCN will participate as an observer. The

final list of PSC members will be completed during the project inception phase, but no later than three months after project kick off.

The PSC will meet every 6 months to review progress in project execution, and to review and approve annual work plans and budgets. The main responsibilities of the PSC members are to:

- ? Ensure alignment of the project with other regional and national initiatives;
- ? Oversee project progress and take timely actions to resolve implementation constraints;
- ? Receive and review annual substantive and financial reports on project activities;
- ? Review and approve annual work plans; and
- ? Ensure monitoring and evaluation of project activities.

In addition, additional stakeholders ? such as community leaders or other ministry representatives ? will be invited to participate on an ad hoc basis when their input is deemed necessary.

Implementing Agency: The IUCN is the implementing agency for the project. It will ensure execution of administrative and financial matters and will assist in key technical and scientific issues. Its role will also be to consolidate results, directly facilitate workshops and the convening of key stakeholders (consistent with its comparative advantage in capacity building), and secure financial resources to complement project activities. Wherever possible, the project will take advantage of the opportunities for synergy and complementarities with other projects or other GEF Agencies (FAO, UNDP). Opportunities will be explored during project implementation to secure partnerships for follow-up investments for on-the-ground activities.

The Implementing Agency will be the primary responsible for:

- ? Supervising project implementation;
- ? Monitoring and evaluating project performance, and preparing implementation review;
- ? Solving implementation issues that cannot be sorted out internally;
- ? Providing technical backstopping to executing agencies at national and provincial levels; and
- ? Ensuring quality control of the project work plans, budget and reports.

Executing Agency: The execution of the project will be under the responsibility of the IUCN, through the IUCN Cameroon office. The Executing Agency will work in partnership with the Ministry of Agriculture, Livestock, Forestry and the Environment, INDEFOR-AP and INCOMA.

Institutional arrangements have been looked at extensively during the preparation of the project, through the development of the PIF and the PPG phase. Stakeholder consultations, including Government partners, have highlighted some critical risks which could be a reason for stopping the project in moving forward during implementation. These are highlighted in section 4.6. In making the decision for selecting which institutional arrangement is the most appropriate to this project, the following risks (identified in section 4.6) have been taken into consideration:

- The high level of fiduciary and corruption risk;

- The absence of reliable partners on the ground that would guarantee the adequate execution of the project;
- The weak institutional capacity for implementation at the national and the local level.

While the above mentioned risks have been prominent in the decisions towards selecting the most appropriate institutional arrangement for this project, others have also been included in the thinking for identifying the relevant institutional arrangement. The main challenge to address was to select an agency that would be willing and have the capacity to undertake the executing function. In that perspective, IUCN, the Government and the project design team explored various options, which did not materialize and are outlined below:

? Wildlife Conservation Society (WCS) Equatorial Guinea: WCS is currently operating in Equatorial Guinea, in particular in Bata, where the GEF funded project is expected to take place. However, all agreements the institution had with the Government have been suspended since its request to become a national NGO instead of an internal NGO was rejected. Additionally, WCS informed IUCN that even if it was institutionally possible to be the executing agency for this project, the current level of project management cost would not allow WCS to take over as their costs are significantly higher for such a project. In this overall context, WCS was not assessed to be a potential candidate for the project executing entity.

? Martinez Hermanos Foundation: This Foundation is one of the major national NGOs in Equatorial Guinea. It is highly respected by Civil society organisations and the Government. However, the Foundation has no historical experience managing environmental and GEF Projects at a large scale, such as this one. The Foundation's projects currently focus on improving the livelihoods of children, notably by working in hospitals, schools, orphanages, cultural centres and sporting events. The Foundation was not assessed to have sufficient capacity, experience and expertise to undertake the role of the project executing agency for this project.

? UN agencies: The United Nations Office for Project Services (UNOPS) was also approached but the relationship was not developed further because it has no presence in Equatorial Guinea, in addition to very limited experience managing projects in the country. Other UN agencies including UNDP and FAO were also consulted and proposed to undertake the role of the project executing agency, which they declined as their policies would not allow and would not have the capacity in the country to do it.

Based on the above, and in the light of the high risk level this project represents, in particular on the fiduciary and operational front, the consultations and assessment done for identifying the most appropriate institutional arrangement for the project, led to deciding on having IUCN as the project executing agency. While this falls into the exception outlined in the GEF project and programme cycle policy which advocates for separate agencies to undertake the implementing and executing functions respectively, this set-up was assessed as the only one suitable for having both the project operations run efficiently and mitigating the identified risks.

The decision of having IUCN as executing agency for this project was also supported by the following arguments.

? Adequate fiduciary controls: IUCN, as a GEF partner agency, has robust and transparent fiduciary standards. It has a track record of operating complex projects in the region, including managing project grants for other GEF agencies (when IUCN was not yet accredited as a GEF partner agency).

? Firewall: As per the GEF policy, IUCN has the capacity of establishing a firewall between the part of the institution which will play the role of executing agency and the one that will be in charge of the

oversight function (in its role as a GEF partner agency). The executing function for this project will be hosted in the IUCN Cameroon country programme based in Yaounde, Cameroon. The oversight function for this project (Partner Agency role covered by the GEF agency fees) will be shared among the IUCN Headquarters and the IUCN Regional Office for Western and Central Africa (PACO) based in Dakar, Senegal. This distribution of responsibilities will ensure that there is sufficient expertise on the operational and fiduciary side for both the executing and the oversight functions.

? Capacity building: It has been agreed that IUCN, through its Cameroon programme, will build capacity of the National Institute of Forest Development and Protected Areas Management (INDEFOR-AP) during the course of this project to overcome the above risks and pave the way for scaling-up this work through the mobilization of additional resources in the future. Within this framework, IUCN and the GoE will jointly recruit the PMU staff members. The staff hired for the purpose of this project will have IUCN contracts and will be hosted by INDEFOR-AP. The PMU staff will be under the overall supervision of the IUCN programme in Cameroon, namely its Head of Programme.

Table highlighting the lines of responsibility, reporting, monitoring and evaluation and accountability within the GEF Agency between the project implementation and execution functions.

IUCN Headquarters in Gland, Switzerland	IUCN Regional Office for Central and West Africa in Senegal	IUCN Cameroon Office
<p>Implementation role:</p> <p>a) Oversight function (Partner Agency Role covered by the GEF Agency Fees);</p> <p>b) Reports to GEF Secretariat (Quality control of reports received from IUCN Regional Office in Senegal);</p> <p>c) Monitoring and Evaluation of the Implementation of activities on the field executed by IUCN Cameroon Office;</p> <p>d) Accountable to GEF Secretariat</p>	<p>Implementation role:</p> <p>a) Oversight function (Partner Agency Role covered by the GEF Agency Fees);</p> <p>b) Reports to Headquarters (Quality control of reports received from IUCN Cameroon Office);</p> <p>c) Monitors and Evaluates the Implementaiton of activities on the field executed by IUCN Cameroon Office;</p> <p>d) Accountable to IUCN Headquarters</p>	<p>Execution role:</p> <p>a) Adequate fiduciary controls on the field;</p> <p>b) Reports to the IUCN Regional Office in Senegal</p> <p>c) Execute project activities in partnership with the Ministry of Agriculture, Livestock, Forestry and the Environment, INDEFOR-AP and INCOMA and other stakeholders;</p> <p>d) Reports to the IUCN Regional Office in Senegal;</p> <p>e) Accountable to the IUCN Regional Office in Senegal</p>

Project coordination and management

The project coordination and management will comprise of national implementing and executing agencies as well as local partners.

The Project Management Unit (PMU) will be established by IUCN and will provide a management structure for the development and implementation of the project, in accordance with the rules and procedures of GEF/IUCN and consistent with directions provided by the PSC.

The PMU will be hosted by INDEFOR-AP but hired by IUCN, and its staff will have offices in the Monte Alen National Park (headquarters) to facilitate project execution on the field and an Office space in Bata (Headquarters of INDEFOR-AP) to facilitate project execution and collaboration with key government decision-makers in the Ministry and INDEFOR. It will also facilitate mobility to, within and from the Rio Campo landscape by project staff. All the necessary infrastructure is in place there. The project will provide the necessary financial support to operate this infrastructure. In return, the government / INDEFOR-AP will ensure that the Monte Alen National Park Manager also lives on site to facilitate work on the ground.

The PMU will consist of 3 permanent staff:

- ? A Project Coordinator with an expertise in conservation and protected areas, natural resource management and the environment. The Project Coordinator will be appointed by the IUCN (Cameroon office), among national applicants, based on academic and professional profile, and suitability for the role (experience and expertise). The Project Coordinator will be in charge of ensuring the project is executed, with relevant activities carried out by the various stakeholders, and ensuring necessary reports are drafted.
- ? A Project Finance and Administrative Officer;
- ? A Technical Assistant/Communication Officer.

In addition, a part time Chief Technical Advisor (CTA) will be responsible for providing assistance to the PMU. The CTA will have oversight of the project activities and will give guidance and advice to the Project Coordinator whilst also controlling and monitoring project implementation. The CTA will be a highly qualified international expert hired by IUCN. The CTA will be half-time for the first year and further engagement will be based on the need of the PMU (on a basis of 2 months/year).

The PMU will be the primary responsible for:

- ? Planning project activities and the annual and quarterly budgets, Planning, Monitoring & Evaluation, and communication of project achievements;
- ? Ensuring proper financial management and reporting of the project resources;
- ? Ensuring fluid communication between the executing and implementing agencies;
- ? Ensuring compliance with GEF and IUCN project management procedures and standards, and with the Environmental and Social Management System requirements;
- ? Preparing bid documents;
- ? Procuring any necessary equipment and supplies;

- ? Administering contracts;
- ? Consolidating reports;
- ? Providing reimbursements for expenses (e.g., daily allowance for meeting participation, transport costs, etc.); and
- ? Other duties as defined.

The PMU will ensure project activities are implemented. Some of the activities will be implemented directly by the PMU, but most will be at least partly implemented by partner stakeholders. Implementing stakeholders include organizations already present in Equatorial Guinea, such as INDEFOR-AP, INCOMA, BZS, WCS, and ANDEGE (among others), as well as regional or international external consultants and service providers. Contracts will be signed between IUCN and the stakeholders implementing activities. The funds for implementation will flow from the ICUN Cameroon office, to the PMU and to the stakeholders, according to IUCN procedures.

Project execution

A number of implementation partners will be involved in ensuring project implementation and carrying out project activities, under supervision and in collaboration with the PMU, as presented in the table below:

Project activities	Implementation partner
Activity 1.1.1.1: Sign and implement the collaboration agreement between Cameroon and Equatorial Guinea on the Campo Ma'an/Rio Campo transboundary landscape	MAGBOMA
Activity 1.1.1.2: Organize three cross-border policy maker tours with Gabon and Cameroon to promote learning and exchange on best practice land use planning, policies and management	MAGBOMA
Activity 1.2.1.1: Carry out a study on the state of forest fragmentation and its consequences on ecosystems	IUCN (PMU with support of UWE)
Activity 1.2.1.2: Carry out a study on the value of ecosystem services of the Monte Alen and Rio Campo landscapes	IUCN (PMU with support of consultants)
Activity 1.2.2.1: Train relevant government and ministry personnel from all institutions taking part in land use planning processes (at provincial and local levels) on the sustainable management and use of natural resources and protected areas, and the related legal framework	IUCN (PMU with support of consultants)
Activity 1.3.1.1: Contribute to the elaboration and appropriation of the land use planning methodology developed by the CBSL IP Regional project at the landscape level	Ministry of finance, MAGBOMA (INCOMA, INDEFOR-AP)
Activity 1.3.1.2: Propose a roadmap and develop five multi-stakeholder land-use plans at the local levels, in the Rio Campo and Monte Alen landscapes, based on the CBSL methodology (one pilot in the vicinity of each protected area of the targeted landscapes)	Ministry of finance, MAGBOMA (INCOMA, INDEFOR-AP)
Activity 1.3.1.3: Implement peer-to-peer training sessions to capitalise on pilot land use plans	Ministry of finance, MAGBOMA (INCOMA, INDEFOR-AP)

Activity 1.3.2.1: Support the functioning of the Monte Alen landscape multi-stakeholder platform (elaboration of their statutes, meetings, exchange of experiences and lessons learned, etc)	MAGBOMA
Activity 2.1.1.1: Carry out a financial audit of INDEFOR-AP and INCOMA, and develop recommendations for better management of financial resources	MAGBOMA, INDEFOR-AP, INCOMA
Activity 2.1.1.2: Build capacity and implement recommendations for enhanced financial resources and financial management of the protected areas	MAGBOMA, INDEFOR-AP, INCOMA
Activity 2.1.2.1: Conduct multi-stakeholder site level Social Assessments for Protected Areas (SAPA tool) of five PAs and buffer zones and produce evaluation reports with action plans for the sites	IUCN, INDEFOR-AP
Activity 2.1.2.2: Revise and update the existing management plans in the four PAs of the Monte Alen landscape and development of the management plan of the upcoming Rio Campo National Park in line with the IUCN Best Practice Guidelines	IUCN, INDEFOR-AP
Activity 2.1.2.3 : Carry out assessments for governance and management using the Site Assessment for Governance and Equity (SAGE) tool, and the Management Effectiveness Tracking Tool (METT) for each of the PAs targeted by the project in adherence to the IUCN Green List Standard of Protected and Conserved Areas	IUCN, INDEFOR-AP
Activity 2.1.2.4: Train protected areas management personnel on best management practices	INDEFOR-AP
Activity 2.1.3.1: Finance INDEFOR-AP's control and monitoring work: eco-guard patrols, managers' field missions, equipment, signage and PA zoning delimitation, cyber tracking	INDEFOR-AP
Activity 2.1.3.2: Finance improvement and maintenance of key infrastructure of the protected areas of the Rio Campo and Monte Alen landscapes to facilitate project delivery	IUCN, MAGBOMA, INDEFOR-AP
Activity 2.1.4.1: Capacity building of eco-guards to ensure effective and equitable patrols	INDEFOR-AP
Activity 2.1.4.2: Set up and train community patrol teams	INDEFOR-AP
Activity 2.1.4.3: Capacity building of local forest law enforcement actors: police, army, mayors, justice, divisional officers, etc	MAGBOMA in cooperation with relevant ministries
Activity 3.1.1.1: Put in place a micro-project grant to support local communities, particularly women and youth, in diversifying their livelihoods (e.g. NTFP ventures, IPLC, ecotourism, policies/legislation, local livelihoods, etc.)	IUCN, Local NGOs
Activity 3.1.1.2: Identify and implement capacity-building and experience sharing programs for local entrepreneurs and community members in order to improve and diversify their livelihoods	IUCN, Local NGOs
Activity 3.1.1.3: Contribute to setting up a GEF UNDP small grants program for Equatorial Guinea	IUCN, UNDP
Activity 3.1.2.1: Carry out a market study on the opportunities of developing an NTFP value-chain, and elaborate catalogues of NTFPs with the participation of the local population	IUCN (PMU with support of consultants)
Activity 3.1.2.2: Carry out research on human-wildlife conflicts in order to understand them and propose and test appropriate mitigation measures	BZS
Activity 3.2.1.1: Facilitate sustainable management of existing forest concessions by capitalizing on the advanced experiences of Cameroon and Gabon	MAGBOMA, General Directorate of the Forest Guard and Reforestation

Activity 3.2.1.2: Support multi-stakeholder consultations and trainings to improve key policies and/or legislative frameworks that favour certification and sustainable forest management in the Rio Campo and Monte Alen landscapes to reduce unsustainable logging activities	MAGBOMA, General Directorate of the Forest Guard and Reforestation
Activity 4.1.1.1: Design and implement broad outreach, awareness and information programs for national and local community audiences	INCOMA, INDEFOR-AP, IUCN (PMU with support of consultants) & NGOs
Activity 4.1.1.2: Support the TOMAGE project: eco-guards and eco-museum staff	INDEFOR-AP, TOMAGE
Activity 4.2.1.1: Participate in regional CBSL meetings and workshops to promote knowledge sharing, exchange and partnership	IUCN with key implementation partners
Activity 4.2.1.2: Facilitate the publication and dissemination of lessons learned on the implementation of the project through the development of high-quality briefs	IUCN, MAGBOMA
Activity 4.2.2.1: Provide information to contribute to CBSL Regional information system and web-portal	IUCN
Activity 5.1.1.1: Appoint the project management unit	IUCN
Activity 5.1.1.2: Procure office equipment	IUCN
Activity 5.1.2.1: Organise project mid-term and end evaluation, and audits	IUCN
Activity 5.1.2.2: Monitor and evaluate project's progress, following the guidelines of the Regional Initiative of the CBSL IP	IUCN

7. Consistency with National Priorities

Describe the consistency of the project with national strategies and plans or reports and assessments under relevant conventions from below:

NAPAs, NAPs, ASGM NAPs, MIAs, NBSAPs, NCs, TNAs, NCSAs, NIPs, PRSPs, NPFE, BURs, INDCs, etc.

- - National Action Plan for Adaptation (NAPA) under LDCF/UNFCCC
- - National Action Program (NAP) under UNCCD
- - ASGM NAP (Artisanal and Small-scale Gold Mining) under Mercury
- - Minamata Initial Assessment (MIA) under Minamata Convention
- - National Biodiversity Strategies and Action Plan (NBSAP) under UNCBD
- - National Communications (NC) under UNFCCC
- - Technology Needs Assessment (TNA) under UNFCCC
- - National Capacity Self-Assessment (NCSA) under UNCBD, UNFCCC, UNCCD
- - National Implementation Plan (NIP) under POPs

- - Poverty Reduction Strategy Paper (PRSP)
- - National Portfolio Formulation Exercise (NPFE) under GEFSEC
- - Biennial Update Report (BUR) under UNFCCC
- Others

The project is fully aligned with national priorities, plans and policies, as presented in the table below.

National priorities	Project consistency
Intentional Nationally Determined Contributions	<p>Equatorial Guinea's ambition is to reduce its GHG emissions by 20% by 2030, compared to 2010 levels, in order to achieve a 50% reduction by 2050.</p> <p>The project is consistent with some of the actions planned within the Forestry, Agriculture and Land Use Change sector, in particular:</p> <ul style="list-style-type: none"> - Promotion of a policy based on land management and classification, through cadastres - Implementation of the National Strategy and Action Plan on the Conservation of Biological Diversity and strengthening the National Protected Areas System with the incorporation of the UNESCO Biosphere Reserve Program <p>It also aligns with objectives on "Information, awareness and education on climate change":</p> <ul style="list-style-type: none"> - Development of formal and informal education modules on the importance and conservation of the environment; - Publication of magazines, brochures, environmental agendas and other material to promote environmental awareness at the national level.
National REDD+ Strategy	<p>Key objectives of the National REDD+ strategy that align with this project include:</p> <ul style="list-style-type: none"> - reduce GHG emissions linked to agriculture, forestry and other land use by 20% by 2030, and by 50% by 2050; - maintain the forested area to 93% of the national territory; - reduce the annual rate of forest degradation to 0.45%; - strengthen the National Protected Areas System; - increase the area of productive forests with sustainable management plans to 80% by 2030; - achieve sustainability and improve the efficiency of the forestry and agricultural sectors; - mitigate and compensate for potential negative impacts for forests from future production activities

<p>National Action Programme to Combat Deforestation and Land Degradation in Equatorial Guinea (2016 ? 2025)</p>	<p>The programme has two objectives:</p> <ol style="list-style-type: none"> 1. Promoting best practices on ongoing sectoral initiatives or strategies and their links to conservation and restoration of ecosystems for the improvement of living conditions of the population with exclusive dependence on resources/environmental factors. 2. Establish mechanisms to strengthen national capacities on persistent gaps and definition of the roles of the different actors/sectors, in order to achieve neutrality in the degradation of lands. <p>The project aligns with 4 of the 5 Strategic Axes developed to attain the set objectives :</p> <ul style="list-style-type: none"> - Management, conservation and restoration of ecosystems: improve the conditions of the affected ecosystems, by implementing conservation and restoration actions of the ecosystems in the Plan's area of influence, considering the basin as a geographical unit of intervention and the water resource as a priority, applying the relevant land management measures. - Promotion, awareness, education and capacity building, for sustainable development : raise the levels of awareness, education and consciousness of the population in management and sustainable use of natural resources, as well as identifying and meeting the needs of building capacities at all levels to prevent and reverse deforestation, land degradation and mitigate the effects of drought - Earth Governance: contribute to consolidate the governance of natural resources, supporting the creation of enabling environments to promote solutions to combat deforestation and land degradation and mitigate the effects of the drought. - Managing risks of deforestation, forest degradation and drought: conduct analysis and monitoring for better understanding and predictive ability of the risks of deforestation, forest degradation and the effects of drought and the mitigation of same
<p>National Economic and Social Development Plan, Horizon 2035</p>	<p>The project is consistent with the National Economic and Social Development Plan, Horizon 2035 that aims to "consolidate social equity and economic diversification" through:</p> <ol style="list-style-type: none"> 1. Eradication of poverty: 2. Sustainable social inclusion and peace 3. Productivity and industrialization 4. Environmental sustainability: focuses on environmental sustainability, guaranteed production, urban planning and responsible consumption for future generations.
<p>National Adaptation Action Plan</p>	<p>The project is consistent with certain actions of this plan to mitigate and adapt to climate change, namely:</p> <ul style="list-style-type: none"> - Sustainable management of Equatorial Guinea's forests to maintain ecosystem integrity and to ensure food security. - Develop communication and education campaigns on ecosystem-based approaches to adaptation, on alternative livelihoods to hunting wildlife for food, and campaigns to reduce market demand for bushmeat - Improvement of Community conservation programmes. - Support to the artisanal fishing sector by supplying them with fishing equipment and gear, boats and management support.

<p>Strategy and Action Plan for the Conservation of Biodiversity in Equatorial Guinea</p>	<p>There are 17 National Goals pursued by the Strategy, the following are in line with the GEF project:</p> <ul style="list-style-type: none"> - Involve the private sector, either to support ongoing initiatives or to develop others, especially "biodiversity conservation and fight against poverty". - Research and strengthening of legal tools, based on the strategic objectives and Aichi Goals 2, 3 and 5 (integration of biodiversity in planning processes and strategies, positive incentives for the conservation and sustainable use of biodiversity, reduction of degradation, fragmentation and loss of habitats) - Promote mechanisms for the valuation and sustainable use of natural resources, seeking the participation of the private sector, NGOs and ethnic groups - Provide equipment and resources for the management of protected areas and carry out periodic evaluations of the infrastructure, personnel and financial resources available to each protected area, for the implementation of the National Protected Areas System - Management of financing and support to national magazines and publications related to biodiversity, and creation of information dissemination mechanisms - Regularization of the NTFP sector
<p>National Land Degradation Neutrality (LDN) targets</p>	<p>Equatorial Guinea General objective: ? LDN will be achieved in 2030, with reference to the period between 2000 and 2010. The GEF project will contribute to 2 of the 4 specific objectives (targets): ? Reduce conversion of forests into other land cover categories by 40% with reference to 2000-2010 levels and improve vegetation cover by 2030; ? Promote research and knowledge on sustainable land management, through constant resource mobilization by 2030</p>

8. Knowledge Management

Elaborate the "Knowledge Management Approach" for the project, including a budget, key deliverables and a timeline, and explain how it will contribute to the project's overall impact.

Knowledge management will be predominantly undertaken in component 4 ?knowledge, exchange, partnership, monitoring and assessment?. Communication will take place on several levels in terms of geography and stakeholders. Outcome 4.1 concentrates on communication at Equatorial Guinea levels: local, landscape and national, while outcome 4.2 focuses on wider regional communication with the regional initiative of the Congo Basin Impact Program and the various other country projects. Knowledge management activities and tools will target a wide variety of stakeholders: different levels of government officials, international and local NGOs, and local communities (children, youth, women...).

The knowledge management and education materials will be designed according to target audiences (considering different education levels) and will integrate traditional, incremental and scientific knowledge. Communication material will include digital and non-digital means and tools, using a diversity of media and events. All materials will be branded and marked according to project guidelines and GEF communication guidelines. The project?s knowledge management activities will be guided by the mechanisms, best practices, tools and methods proposed by the regional project, and through a close collaboration with the regional project. In addition, the project will contribute, with other national child projects, to the development of the annual knowledge management work plan developed at regional level by the regional project.

The project will enable improved knowledge and capacities on natural resource management at all levels through the participation of all relevant stakeholders in training sessions on a variety of topics.

Furthermore, an informed database of lessons learnt during project roll-out will be built to ensure capitalization of project interventions.

The overall budget of the knowledge management activities amounts to 493,140 USD.

Scale	Target	Example of communication activities and key deliverables	Timeline
Regional level	<ul style="list-style-type: none"> - Regional organisations - Other GEF country project teams - Congo Basin countries? government officials 	<ul style="list-style-type: none"> - Technical briefs - Regional workshops - Regional CBSL IP information system (knowledge management platform) - Articles and videos 	<ul style="list-style-type: none"> - Yearly - According to regional project - Throughout the project timeframe - Throughout the project timeframe
National and landscape level	<ul style="list-style-type: none"> - Equatorial Guinea population - School students 	<ul style="list-style-type: none"> - Production and broadcasting of radio shows - Production and broadcasting of short TV documentaries - Press articles - Social media networks - Awareness raising events 	<ul style="list-style-type: none"> - Shows broadcasted weekly for a month, every 6 months - Documentaries developed at project mid-term and end term - Throughout the project - Throughout the project
Central level	<ul style="list-style-type: none"> - Decision and policy-makers - Government technical officers - National & international NGOs - International organisations 	<ul style="list-style-type: none"> - Technical briefs - Posters, pamphlets, booklets - Existing institutional websites - Distribution of progress and evaluation reports - Project national meetings (PSC) - Multi-stakeholder consultations and workshops 	<ul style="list-style-type: none"> - At least one per year - Throughout the project - Throughout the project - Quarterly and annually for progress reports, mid-term and end term for evaluation reports - Every 6 months - According to project activity timelines
Provincial level	<ul style="list-style-type: none"> - Provincial authorities - Decentralized government staff 	<ul style="list-style-type: none"> - Project provincial meetings - Press articles 	<ul style="list-style-type: none"> - According to project activities

Scale	Target	Example of communication activities and key deliverables	Timeline
Local level	<ul style="list-style-type: none"> - Village chiefs and councils - Community members 	<ul style="list-style-type: none"> - Project local meetings - Project posters, brochures and signs - T-shirts and caps 	<ul style="list-style-type: none"> - According to project activities - Throughout the project - Throughout the project

9. Monitoring and Evaluation

Describe the budgeted M and E plan

Monitoring and evaluation (M&E) of the proposed project will be conducted in accordance with established IUCN and GEF procedures/guidelines, and in coherence with the regional project's M&E system and framework. The PMU will be in charge of the ongoing M&E of the project throughout the implementation period. The standard M&E reports and procedures required for all IUCN/GEF projects will apply to the M&E plan for the proposed project, including the following elements in the table below.

M&E activity	Description	Frequency	Responsible	Budget (GEF funded)
Inception Workshop and Report	The Inception Workshop gathering the stakeholders involved in the project, and resulting Inception Report, provide the occasions and means to finalize preparations for the implementation of the proposed project, involving the formulation of the first annual work plan, the detailing of stakeholder roles and responsibilities, and that of reporting and monitoring requirements. Considering the consultation process at PPG, only minor adjustments are expected.	Within the first two months of project start up. Will be undertaken at the national and landscape scales.	PC CTA IUCN Regional Program Coordinator	US\$ 4,000
Baseline study	The project logical framework will be fine-tuned where necessary.	At project inception.	PC CTA IUCN Regional Program Coordinator	US\$ 3,000

M&E activity	Description	Frequency	Responsible	Budget (GEF funded)
Strategic Result Framework	The Project Results Framework presented in section 2 includes SMART indicators for each expected outcome as well as mid-term and end-of-project targets. These indicators will be the main tools for assessing project implementation progress and whether project results are being achieved. Measurements of means of verification for project progress on output and implementation will be made throughout the implementation period.	Data collected continuously in order to have the required quantitative and qualitative data on the progress against each indicator prior to Annual Project Reports and to the definition of annual work plans.	PC CTA	US\$ 4,000
Quarterly Progress Report	Each quarter, the PMU will prepare a summary of the project's substantive and technical progress towards achieving its objectives. The summaries will be sent to the IUCN Regional Program Coordinator.	Quarterly	PC CTA IUCN Regional Program Coordinator	US\$ 4,000
Annual Project Report (APR)	The APR covers performance assessments on project outputs and outcomes, major achievements, evidence of success, constraints, lessons learned and recommendations as well as an overall rating of the project. The APR will be prepared by the Project Coordinator after consultation with the relevant stakeholders, and will be submitted to IUCN.	Annually	PC CTA IUCN Regional Program Coordinator	US\$ 2,000
Tripartite Review (TPR) (Steering committee)	The TPR members will meet annually to assess the progress of the project and make decisions on recommendations to improve the design and implementation of the project in order to achieve the expected results.	Annually	PC CTA IUCN Regional Program Coordinator	US\$ 4,000 (US\$ 1,000 per meeting)

M&E activity	Description	Frequency	Responsible	Budget (GEF funded)
Independent External Evaluation at mid-term	A mid-term project evaluation will be conducted during the third implementation year, focusing on relevance; performance (effectiveness, efficiency and timeliness); issues requiring decisions and actions; and initial lessons learned about project design, implementation and management.	At the mid-point of project implementation.	IUCN Coordinator/Evaluation Office	US\$ 45,000
Independent External Evaluation at termination of the project	A final evaluation, which occurs three months prior to the final TPR meeting, focuses on the same issues as the mid-term evaluation but also covers impact, sustainability, and follow-through recommendations, including the contribution to capacity development and the achievement of global environmental goals.	At least three months before the end of project implementation.	IUCN Evaluation Office	US\$ 60,000
Terminal Project Report	A Terminal Project Report will be prepared for the terminal meeting.	On completion of the terminal evaluation.	PC CTA IUCN Regional Program Coordinator	US\$ 1,300
Budget revisions	Project budget revisions will reflect the final expenditures for the preceding year, to enable the preparation of a realistic plan for the provision of inputs for the current year. It is expected that significant revisions will be cleared with the IUCN/GEF Coordinator for consistency with the GEF incremental principle and GEF eligibility criteria before being approved.	At least every year and as necessary during the course of the project	PC Administrative and Financial Assistant CTA IUCN Regional Program Coordinator	US\$ 4,000

M&E activity	Description	Frequency	Responsible	Budget (GEF funded)
Audits	A financial audit will be undertaken every year. The PMU will develop and implement a strategy to address audit recommendations after each audit.	Annually	PC Administrative and Financial Assistant IUCN Regional Program Coordinator	Total indicative cost: US\$ 28,000 (US\$ 7,000 per year).
TOTAL indicative COST				US\$ 159,300

10. Benefits

Describe the socioeconomic benefits to be delivered by the project at the national and local levels, as appropriate. How do these benefits translate in supporting the achievement of global environment benefits (GEF Trust Fund) or adaptation benefits (LDCF/SCCF)?

Monitoring and evaluation (M&E) of the proposed project will be conducted in accordance with established IUCN and GEF procedures/guidelines, and in coherence with the regional project's M&E system and framework. The PMU will be in charge of the ongoing M&E of the project throughout the implementation period. The standard M&E reports and procedures required for all IUCN/GEF projects will apply to the M&E plan for the proposed project, including the following elements in the table below.

M&E activity	Description	Frequency	Responsible	Budget (GEF funded)
Inception Workshop and Report	The Inception Workshop gathering the stakeholders involved in the project, and resulting Inception Report, provide the occasions and means to finalize preparations for the implementation of the proposed project, involving the formulation of the first annual work plan, the detailing of stakeholder roles and responsibilities, and that of reporting and monitoring requirements. Considering the consultation process at PPG, only minor adjustments are expected.	Within the first two months of project start up. Will be undertaken at the national and landscape scales.	PC CTA IUCN Regional Program Coordinator	US\$ 4,000

M&E activity	Description	Frequency	Responsible	Budget (GEF funded)
Baseline study	The project logical framework will be fine-tuned where necessary.	At project inception.	PC CTA IUCN Regional Program Coordinator	US\$ 3,000
Strategic Result Framework	The Project Results Framework presented in section 2 includes SMART indicators for each expected outcome as well as mid-term and end-of-project targets. These indicators will be the main tools for assessing project implementation progress and whether project results are being achieved. Measurements of means of verification for project progress on output and implementation will be made throughout the implementation period.	Data collected continuously in order to have the required quantitative and qualitative data on the progress against each indicator prior to Annual Project Reports and to the definition of annual work plans.	PC CTA	US\$ 4,000
Quarterly Progress Report	Each quarter, the PMU will prepare a summary of the project's substantive and technical progress towards achieving its objectives. The summaries will be sent to the IUCN Regional Program Coordinator.	Quarterly	PC CTA IUCN Regional Program Coordinator	US\$ 4,000
Annual Project Report (APR)	The APR covers performance assessments on project outputs and outcomes, major achievements, evidence of success, constraints, lessons learned and recommendations as well as an overall rating of the project. The APR will be prepared by the Project Coordinator after consultation with the relevant stakeholders, and will be submitted to IUCN.	Annually	PC CTA IUCN Regional Program Coordinator	US\$ 2,000

M&E activity	Description	Frequency	Responsible	Budget (GEF funded)
Tripartite Review (TPR) (Steering committee)	The TPR members will meet annually to assess the progress of the project and make decisions on recommendations to improve the design and implementation of the project in order to achieve the expected results.	Annually	PC CTA IUCN Regional Program Coordinator	US\$ 4,000 (US\$ 1,000 per meeting)
Independent External Evaluation at mid-term	A mid-term project evaluation will be conducted during the third implementation year, focusing on relevance; performance (effectiveness, efficiency and timeliness); issues requiring decisions and actions; and initial lessons learned about project design, implementation and management.	At the mid-point of project implementation.	IUCN Coordinator/Evaluation Office	US\$ 45,000
Independent External Evaluation at termination of the project	A final evaluation, which occurs three months prior to the final TPR meeting, focuses on the same issues as the mid-term evaluation but also covers impact, sustainability, and follow-through recommendations, including the contribution to capacity development and the achievement of global environmental goals.	At least three months before the end of project implementation.	IUCN Evaluation Office	US\$ 60,000
Terminal Project Report	A Terminal Project Report will be prepared for the terminal meeting.	On completion of the terminal evaluation.	PC CTA IUCN Regional Program Coordinator	US\$ 1,300

M&E activity	Description	Frequency	Responsible	Budget (GEF funded)
Budget revisions	Project budget revisions will reflect the final expenditures for the preceding year, to enable the preparation of a realistic plan for the provision of inputs for the current year. It is expected that significant revisions will be cleared with the IUCN/GEF Coordinator for consistency with the GEF incremental principle and GEF eligibility criteria before being approved.	At least every year and as necessary during the course of the project	PC Administrative and Financial Assistant CTA IUCN Regional Program Coordinator	US\$ 4,000
Audits	A financial audit will be undertaken every year. The PMU will develop and implement a strategy to address audit recommendations after each audit.	Annually	PC Administrative and Financial Assistant IUCN Regional Program Coordinator	Total indicative cost: US\$ 28,000 (US\$ 7,000 per year).
TOTAL indicative COST				US\$ 159,300

11. Environmental and Social Safeguard (ESS) Risks

Provide information on the identified environmental and social risks and potential impacts associated with the project/program based on your organization's ESS systems and procedures

Overall Project/Program Risk Classification *

PIF	CEO Endorsement/Approval	MTR	TE
Medium/Moderate			

Measures to address identified risks and impacts

Elaborate on the types and risk classifications/ratings of any identified environmental and social risks and impacts (considering the GEF ESS Minimum Standards) and any measures undertaken as well as planned management measures to address these risks during implementation.

The project aims to improve land use planning, policies, and management, ensure the long-term viability of forests providing important habitat and critical ecosystem services and reduce community and production sector impacts on important forest services in landscapes. Component 1 focuses on the national policy and institutional level in order to improve the enabling environment and strengthen capacities. It further supports the 2 landscapes (Rio Campo and Monte Alen) in the development of community-based land use plans at the local levels. Component 2 foresees concrete interventions to improve governance and management effectiveness of five protected areas in the same 2 landscapes (in 5 PAs) and outcome 3 interventions aiming at supporting local livelihoods. The latter include a small grant program for promoting the diversification of livelihoods, technical inputs to support community benefits accrued from protected areas and support to eco-tourism development. It will further promote sustainable forest management and logging practices of community stakeholders, decentralized government structures and private sector logging companies.

The project is expected to lead to environmental benefits (reduction of the degradation of forests) and social benefits through the livelihood support activities. Notwithstanding, the screening process uncovered some social risks, primarily related to the potential of causing adverse impacts to communities living in or adjacent to the 5 PAs when putting in place restrictions on the use of forest and non-forest natural resources, increasing enforcement of existing restrictions and expanding the PA coverage (triggering the Standard on Access Restrictions). Risks from potentially inappropriate law enforcement practices for local communities (in terms of human rights and livelihoods) have been identified, but also safety risks for rangers and community patrols themselves (as well as project workers) due to their exposure to illegal poaching/wildlife crime. Another risk issue is gender-based violence given the contextual factors and the complete lack of awareness, legislation and prevention strategies. For a comprehensive analysis of social and environmental risks, please refer to section B1-B5 of the Screening Questionnaire in the Annex.

The Indigenous Peoples Standard has not been triggered (yet) as the field visits, social survey and stakeholder consultations have not identified the presence of indigenous people in the project sites. It is believed, though, that some small groups of nomadic Beyele people live in the dense equatorial forest, mainly located in the area on the border with Cameroon. Hence, the project should make the required efforts to confirm or rule out the presence of indigenous groups (including the Beyele) ? through the social assessments (SAPA) that will be carried out under component 2 as well as through further investigation with relevant stakeholders, including social scientists and indigenous peoples? experts, to be undertaken during the inception phase. In case the presence of indigenous peoples is confirmed ? even in areas outside the project sites but still in a distance that the groups might potentially cross and reach the project sites during their migratory trajectories ? the standard would be triggered and

requirements (including consultations, FPIC as well as respect of the wish to remain in a state of voluntary isolation) would need to be adhered to.

The Standard on Cultural Heritage is triggered as there is a potential that the PA zoning will include sites of cultural/ spiritual significance. Another potential trigger is the possibility that the ecotourism strategy involves the use or promotion of cultural heritage.

Overall, the identified risks and impacts are limited in scale and few in number; they were identified with a reasonable degree of certainty, and can be addressed through the application of protected area management good practice, mitigation measures and stakeholder engagement during project implementation. In fact, project design already attempts to mitigate the two main social risks, (i) risks from access restrictions and (ii) law enforcement, as explained below. It is therefore classified as a moderate risk project.

Ad (i) Adverse impacts on local communities living in or adjacent to the five protected areas supported by the project from putting in place or enforcing restrictions on use or access to forest resources will be addressed, to a substantial extent, through the following strategies already embedded in project design:

- ? Social assessment:
 - o Carrying out social assessment in all five sites to foster a good understanding of the current situation and identify existing negative impacts of protected area conservation on local people that the project is inheriting (such as law enforcement actions that infringe/violate human rights, human wildlife conflict may infringe human rights to food etc.) and that new management measures might cause.
 - o Following the Social Assessment for Protected Areas (SAPA) tool.
- ? Improving governance:
 - o The recognition that effective participation of local communities is contingent on the existence of equitable governance arrangements that address issues of recognition, procedure (especially participation, transparency) and the distribution of benefits and costs.
 - o By implementing a governance assessment process in all five sites by introducing and implementing the Green List criteria and indicators as the benchmark for successful and inclusive area based conservation.
 - o Expected benefits of involving local communities in the governance of protected area are, among others, that they participate in decisions that affect them and that their rights and livelihood needs are respected. By ensuring full and effective participation, the formerly involuntary nature of putting in place access restrictions would turn into a voluntary process where such restrictions are increasingly decided by the communities themselves.
- ? Notwithstanding these efforts and as per IUCN ESMS Standard on Access Restrictions, a Process Framework (PF) is still required because:
 - o the transfer of governance to local communities will be incremental for the existing PAs ? hence the PF needs to capture how access restrictions will be handled in the meantime; and
 - o even with inclusive governance some gaps remain in terms of the process and requirements compared with the requirements of the Standard (including the requirement to mitigate or compensate for livelihood losses) and the PF should provide guidance for closing these gaps.

Ad (ii) Risks related to law enforcement are being addressed by the project through the following design elements:

- ? Education and capacity building of eco-guards

- o to ensure they understand the laws they are enforcing and the powers they have in enforcing them, as well as the rights of local communities.
 - o to encourage working with local communities rather than against them and to provide tools to interact with the population in a respectful manner.
 - o focus will be on sanctioning organised poaching and logging groups rather than individual subsistence hunters from local communities.
- ? Law enforcement activities focusing on voluntary behavioural change and inclusion in decision making, including:
- o Education: meetings with communities to explain the law, posters depicting regulations, teaching other law enforcement authorities,
 - o Actively engaging communities in decision-making and implementation processes for law enforcement at all stages (for example, discussions with communities on conservation law compliance issues and how to improve compliance - what incentives could make it easier for them to comply);
 - o Working with eco-guards and local communities on legitimation: the regulations and their sanctions should be perceived as useful, appropriate and fair by the local communities
 - o Local communities will be involved in patrolling activities and eco-guards recruited by the project will be selected from local communities in the project implementation sites.

The project will set up a small grant program to support micro-projects at community or household level. As the grant projects to be awarded will only be known during the project, it cannot be assessed on potential E&S risks at this point. Therefore, an Environmental and Social Management Framework (ESMF) is needed that provides the procedure for assessing such risks during project implementation.

The ESMF will also need to provide guidance for risk identification and management related to those activities that are not yet fully defined (e.g. activities that require participatory decision making or that depend on the land use planning process); in particular on risks from potential restrictions to sites of cultural significance (if confirmed by SAPA) and the need to obtain consent from the respective rights holders if the ecotourism strategy involves the use or promotion of cultural heritage.

The Process Framework, triggered by the Standard on Access Restrictions, should be integrated into the ESMF in order to ensure alignment and management

Supporting Documents

Upload available ESS supporting documents.

Title	Module	Submitted
GEF EquatGuinea_ESMS_Screening_and_Clearance_02022021	CEO Endorsemen t ESS	
A00575_SecurityHumanRightsRiskAssessment_02022021	CEO Endorsemen t ESS	

ANNEX A: PROJECT RESULTS FRAMEWORK (either copy and paste here the framework from the Agency document, or provide reference to the page in the project document where the framework could be found).

Objectives: To conserve and sustainably manage biodiversity and forest ecosystems in the Monte Alen and Rio Campo landscapes in Equatorial Guinea through an inclusive landscape approach, effective land use planning, enhanced management of protected areas and the promotion of local governance and sustainable livelihood options					
Outputs	Indicator	Baseline	Target	Source of verification	Assumption (A) / Risk (R)
Component 1. Integrated and improved land use planning, policies, and management					
1.1. Enhanced cooperation and planning at national level, governing the use of transboundary resources and landscapes					
1.1.1. Cross-border multi-stakeholder dialogues on sustainable land use planning and policy issues with transboundary dimensions (e.g., illegal poaching and logging; infrastructure development; connectivity; legal extractives; water)	Cross-border agreement signed Number of cross-border policy maker tours	0 0	1 3	Agreement signed Mission reports	A: Involvement of stakeholders R: Low level of stakeholder engagement ; low political will
1.2. Ensure that protected areas, natural capital and forest dependent people's rights are taken into account in the land use planning processes and decisions at local and landscape levels					
1.2.1. Technical inputs to support the development of improved land use policies, including incorporating natural capital in such policies	Number of studies undertaken	0	2	Studies published and available	A: Appropriate capacity to implement assessments and priority studies identified R: Inappropriate priorities; Delays for the preparation of designation and/or registration documentation

1.2.2. Capacity building program strengthening the ability of relevant government personnel at local and provincial levels to incorporate natural capital and forest dependant people's land rights into land use planning, and management; and strengthening effective local governance of natural resources	Capacity diagnosis carried out Number of training modules developed Number of training sessions Number of people trained	0 0 0 0	1 7 31 312	Diagnosis Training material (modules) Training session reports	A: Identification of needs and availability of staff to follow trainings R: Inappropriate priorities
1.3. Development and uptake of integrated land use management plans in the Rio Campo and Monte Alen landscapes, with the full participation of local stakeholders, to support the sustainable management and ecological integrity of these landscapes					
1.3.1. Development of community-based land use plans at the local levels in Rio Campo and Monte Alen landscapes	Roadmap to develop multi-stakeholder land-use plans at the local levels Number of local land use plans developed Number of peer to peer capacity building sessions Number of local land use plans implemented	0 0 0 0	1 5 10 5	Reports Achieved stages Training session reports	A: Involvement of stakeholders R: Discrepancy between the interventions undertaken at the national and at the landscape/local levels
1.3.2. Multi-stakeholder dialogues to promote sustainable forest management by communities, private sector and decentralized and deconcentrated government structures	Statutes Number of meetings	0 0	1 8	Statutes of the platform Meeting minutes Mid-term and final evaluation reports	A: Relevant stakeholders involved R: No stakeholder interest in the platform
Component 2. Ensuring the long-term viability of forests providing important habitat to endangered species and critical ecosystem services					
2.1. Improved management of natural resources and PAs within the Rio Campo and Monte Alen landscapes with the collaboration and participation of local communities					

2.1.1. INDEFOR-AP & INCOMA recognized as efficient and reliable institutions to manage international donor funds	Financial audit of INDEFOR-AP Financial audit of INCOMA Number of implementation reports of financial audit recommendations	0 0 0	1 0 2	Audit and reports	A: Transparency of all procedures in place R: Limited access to non-formal procedures
2.1.2. Enhanced management plans and governance of five protected areas in the Rio Campo and Monte Alen landscapes	Number of governance assessment reports Number of PA management plans updated and technically approved Number of PA management plans updated and politically approved Number of PA management effectiveness assessments carried out METT score Monte Alen METT score Rio Campo METT score Altos de Nsork METT score Piedra Nzas METT score Rio Muni Number of training sessions Number of people trained	0 0 0 40 41 35 40 37 0 0	3 (1 SAPA + 2 SAGE) 4 4 15 (3 in each of the 5 PA: inception, mid-term, end term) 65 65 65 65 65 3 15	Governance reports PA management plans Official validation documents METT assessment reports METT assessment reports Training session reports	A: Involvement of stakeholders R: Delay for the political validation ; no political interest

2.1.3. Enhanced protected area resources and infrastructure, to facilitate the implementation of management plans (enhanced monitoring and management of these PAs)	Number of INDEFOR-AP field missions supported by the project	0	200	INDEFOR-AP and eco-guard activity reports Mid-term and final evaluation reports	A: Involvement of INDEFOR-AP R: Bureaucracy in order to validate field missions	
	Number of months of eco-guard activity supported by the project	0	800			
	Number of fully functional PA management centers	0	3			
	Number of new eco-museums	0	2			
	Control points established	0	4			
2.1.4. Participatory monitoring and enforcement of laws and policies governing protected areas, and illegal poaching and logging in wider landscapes	Number of training sessions	0	48	Training sessions reports Mid-term and final evaluation reports	A: Involvement of stakeholders, willingness to be trained R: Low level of stakeholder engagement	
	Number of people trained	0	300			
	Number of days of community patrols supported by the project	0	2000			
Component 3. Reduced community and production sector impacts on important forest services in landscapes						
3.1. Support local livelihoods and strengthen incentives to conserve forests in the Rio Campo and Monte Alen landscapes						
3.1.1. Improved and diversified livelihoods based on the sustainable use of forest and agricultural resources, including income generating and livelihood options for communities, adopted and implemented through a small grants program that capitalises on the GEF UNDP model	Number of micro projects for livelihood activities	0	100	Field visits - Activity reports Training sessions reports Mid-term and final evaluations reports	A: Relevant beneficiaries identified and committed R: Conflicts between different user groups over competition for access and rights to resources	
	Value invested in micro-projects	0	979 100 USD			
	Number of NGO contracts	0%	4			
	Share (%) of individual beneficiaries that are women or young people	0	At least, 30% of young people and 40% of women			
	Number of capacity building sessions	0	60			
	UNDP Small grants program		1			

3.1.2. Technical inputs contributing towards enhanced community benefits accrued from the use and management of protected areas (e.g. NTFP value chains, human-wildlife conflicts)	Number of studies undertaken Months of Post-Doctoral researcher	0 0	2 36	Studies published and available Mid-term and final evaluations reports	A: Appropriate capacity to implement assessments and studies identified R: Inappropriate priorities; Delays for the preparation of designation and/or registration documentation
3.2. Improvement of sustainable logging practices by private sector logging companies operating within Rio Campo and Monte Alen landscapes					
3.2.1. Multi-stakeholder consultations, training and improved enabling environment for sustainable private sector forest management in Rio Campo and Monte Alen landscapes, to reduce impacts on forests	Cross-border policy maker tour Training module developed Number of training sessions Workshop held	0 0 0 0	1 1 5 1	Mission report Training session reports Minutes of workshop	A: Relevant stakeholders involved R: No stakeholder interest
Component 4. Knowledge exchange, partnership, monitoring and assessment					
4.1. Raising public awareness on the value of natural resources and the importance of conservation					

4.1.1. Broad outreach, awareness and information programs on the value of natural resources and the importance of conservation to raise awareness and support for sustainable management of Equatorial Guinea and Congo Basin biodiversity	Number of production and broadcasting of radio shows	0	5	Radio and TV shows Reports of environmental education activities Communication tool kits INDEFOR-AP website Educational trail Mid-term and final evaluations reports	A: Involvement of stakeholders R: No interest of stakeholders			
	Number of production and broadcasting of TV documentaries	0	3					
	Number of environmental education activities	0	75					
	Number of communication tool kits developed	0	10					
	Number of educational trails developed	0	1					
	Number of INDEFOR-AP websites developed	0	1					
	Number of months of TOMAGE eco-guard activity supported by the project	0	240					
	Number of days of TOMAGE community patrol supported by the project	0	400					
	4.2. Progress of CBSL in Equatorial Guinea is tracked and adaptively managed							
	4.2.1. Improved knowledge of best practices in sustainable management of forest resources in the Congo Basin	Number of regional CBSL meetings and workshops attended	0			4	Meeting minutes	A: Involvement of stakeholders R: No risk
Number of briefs published		0	8	Published briefs				
4.2.2. Operational system to monitor and evaluate progress (providing relevant information to managers, stakeholders and Regional Initiative)	Number of monitoring and evaluation strategies and tools	0	1	Mid-term and final evaluations reports	A: Involvement of stakeholders R: No risk			
	Number of communications to CBSL regional initiative	0	8					
5. Project management & monitoring								
5.1 Project is effectively and efficiently managed								
5.1.1 Project management team established and functional	Number of project staff hired	0	4	Annual project audit reports Mid-term and final evaluations	A: Efficiency of the PMU R: Delays in work plan and			

5.1.2 Project evaluation and audit missions carried out	Number of project evaluations carried out	0	2	Annual project audit reports Mid-term and final evaluations	procurement plans validation and disbursements
		0	2		
	Number of evaluations carried out	0	4		
	Number of audits carried out				

ANNEX B: RESPONSES TO PROJECT REVIEWS (from GEF Secretariat and GEF Agencies, and Responses to Comments from Council at work program inclusion and the Convention Secretariat and STAP at PIF).

Part I: Project Information		Response	Response to STAP comments for EG child project
GEF ID		10208	
Project Title		The Congo Basin Sustainable Landscapes Impact Program (CBSL IP)	
Date of Screening		22-May-19	
STAP member Screener		Rosie Cooney	
STAP secretariat screener		Virginia Gorsevski	
STAP Overall Assessment		Minor	

	<p>STAP welcomes the submission of the Program Framework Document for the Congo Basin Sustainable Landscapes Impact Program (CBSL). The Basin is the Earth's second largest area of contiguous moist tropical forest, but the services it provides are under increasing pressure from deforestation, fragmentation, and infrastructure and other economic activities. There have been numerous conservation activities in the Congo Basin in recent years (outlined in detail in the Baseline section), this program offers a number of important policy and institutional innovations. For example, the use of integrated land use planning (iLUMPs) and the application of natural capital accounting (NCA) is innovative for this region, as is strengthening indigenous and local community tenure and management rights. For all of these innovations, it will be important to incorporate lessons learned from similar projects as well as from the CBSL program as it advances. The program builds strongly on multi-stakeholder partnerships, which should help promote durability of project benefits. Risks are well articulated at a general level, but lack specificity or convincing responses in some cases. Note that there are real barriers to effective participation of Indigenous People and Local Communities (IPLCs) and women in consultations and planning processes. To overcome these barriers, proactive strategies and targeted expertise will be required to mitigate. There are two particular deficiencies: identifying and addressing the barriers to scaling and transformation, particularly with regard to vested interests; and articulating a clear theory of change (TOC) that links drivers of deforestation/forest degradation and their root causes to project structure, outcomes and overall objective, and which identifies critical assumptions. STAP recommends further clarification of barriers and how to address them, along with the development of a clear, detailed TOC with a clear logical sequence of the steps and assumptions required. In the PPG phase, the CBSL should provide detailed and realistic objectives that can be monitored and measured (and adjusted if necessary) over time.</p>	<p>To ensure effective participation of IPLCs a number of activities geared towards the inclusion and consultation at local levels have been proposed:</p> <ul style="list-style-type: none"> - In terms of land use planning, pilot land use plans will be developed at community level. Local communities will also be represented in the multi-stakeholder landscape platform, - Specific governance related activities have been planned to promote the involvement of local communities in protected areas? governance (SAPA, SAGE and METT) <p>A specific gender action plan has been developed to ensure active participation and consultation of women.</p> <p>A detailed description of threats, root causes and barriers has been given, as well as the specific gaps to be filled the project will address.</p> <p>Detailed objectives and the indicators to monitor and measure them have been presented in the results framework.</p>
--	---	--

Part I: Project Information	What STAP looks for	Response	
B. Indicative Project Description Summary			
Project Objective	Is the objective clearly defined, and consistently related to the problem diagnosis?	The objectives are vague, and say little about what state is aimed for in terms of actual global environmental values (biodiversity, carbon storage, etc). The overall objective is "To catalyze transformational change in conservation and sustainable management of the Congo Basin through landscape approaches that empower local communities and forest dependent people, and through partnerships with the private sector". But this says very little about what such change should look like, or how it relates to biodiversity/carbon/land degradation goals. The "long term solution" put forward is that "The six basin countries need to work together to undertake national and cross-border actions that stabilize forest cover, peatlands, and wildlife populations so that the Congo Basin forest ecosystem remains healthy and thriving" (p. 36); and later on p 44 it is said that realising the overall objective will lead to "an intermediate state wherein the Congo Basin forest ecosystem is healthy and thriving with stable forest cover, peatlands, and wildlife populations". But this could involve stable forest cover/biodiversity etc at levels much lower than today - is it possible for objectives to actually set out what the project seeks to achieve in terms of forest/biodiversity/climate outcomes, being realistic about the coming pressures?	The EG child project's overall objective has been defined as "to conserve and sustainably manage biodiversity and forest ecosystems in the Monte Alen and Rio Campo landscapes in Equatorial Guinea through an inclusive landscape approach, effective land use planning, enhanced management of protected areas and sustainable livelihood options?". An explanation of the project rationale and how the project will contribute to global environmental benefits has been given, specifically in terms of combatting land degradation, and contributing to biodiversity conservation and climate change mitigation. Specific core indicators have also been developed.
Project components	A brief description of the planned activities. Do these support the project's objectives?	Overall yes, though the categorisation of activities into components is conceptually fuzzy, and the links between each components and how these address drivers/threats/root causes is not clearly explained.	A clear and detailed logical framework has been developed with detailed description of activities and project outcomes.

Outcomes	A description of the expected short-term and medium-term effects of an intervention.	Program Outcomes are provided for each Component; however, they are not broken down into specific short term and medium term effects. For Component 1 - the main output is the number of ILUMPs developed and the area they encompass. Component 2 has to do with improved management effectiveness (METT) and connectivity. Component 3 focuses on forest-related value chains and the extent to which communities are engaged and empowered. And Component 4 refers to CB, KM and regional cooperation.	A description of the effects of the outputs and outcomes of each component has been given
	Do the planned outcomes encompass important global environmental benefits/adaptation benefits?	Yes	
	Are the global environmental benefits/adaptation benefits likely to be generated?	It is hard to assess this without a clear TOC that identifies how the outputs of each component affect outcomes and the objective, and identifies critical assumptions. On the whole the activities do indeed appear appropriate and likely to generate these GEBs, but the complexity of the program and the large number of potential risks make this difficult to assess.	The TOC presents how the GEBs are generated
Outputs	A description of the products and services which are expected to result from the project. Is the sum of the outputs likely to contribute to the outcomes?	As discussed above, outputs are not specifically outlined for each of the Components. Rather indicators are provided for each Component which seem to serve the same purpose.	Indicators have been provided for each output. The description of the outcomes details how the outputs contribute to the outcomes.

Part II: Project justification	A simple narrative explaining the project's logic, i.e. a theory of change.		
1. Project description. Briefly describe:			

<p>1) the global environmental and/or adaptation problems, root causes and barriers that need to be addressed (systems description)</p>	<p>Is the problem statement well-defined?</p>	<p>Key points are generally well covered in the problem statement, although this is not written clearly and needs much stronger organisation - for instance, there is no explicit discussion of root causes, although some of these are highlighted earlier in the program rationale.</p> <p>Specific points:</p> <p>*A general point throughout is that the term "PA" is used without definition, and it is not clear whether it includes zones such as community-managed hunting zones/community forests and state-run trophy hunting concessions etc? Different uses seem to imply that PA either does or doesn't include these at different points. So this is hard to interpret.</p> <p>Cultural and socio-economic significance:</p> <p>*Great to see the analysis of the underlying problems with tenure here, though these could be helpfully pulled out as a root cause.</p> <p>*Important to recognise that conservation and PAs have also been a major cause of eviction and dispossession of forest peoples from their land, not just granting of concessions for agriculture/forestry etc.</p> <p>*Discussion of peoples is somewhat inadequate, and in particular doesn't highlight the difference between forest peoples generally recognised as indigenous ("Pygmies"), who are primarily hunter-gatherer and marginalised in land policy/politics etc, and the agricultural ("Bantu") groups. C African states (including Gabon - see http://documents.worldbank.org/curated/en/504451468251730621/Programme-Sectoriel-Forets-et-Environnement-PSFE-Plan-de-developpement-des-peuples-autochtones) have recognised the need to recognise indigenous peoples - see e.g. work of African Commission https://www.iwgia.org/images/publications//African_Commission_book.pdf.</p> <p>Legislative and policy context:</p> <p>*It may be helpful for this to include key characteristics of legislative/policy contexts operating at national level in region: there are high-level characteristics across the region that are extremely relevant to understanding current situation e.g. highly centralised state ownership</p>	<p>STAP comments here are very specific to the IP</p> <p>A clear and detailed description of threats, root causes and barriers has been given.</p> <p>In EG, protected areas are defined by law 4/2000 and concern 13 areas which have been presented in project documentation. This term does not concern community managed zones or trophy hunting concessions</p> <p>Project documentation gives a detailed description of the national policy context in EG.</p>
---	---	--	--

Are the barriers and threats well described, and substantiated by data and references?

Threats and Root causes:

*Recent publication on deforestation in region could helpfully be cited <https://advances.sciencemag.org/content/4/11/eaat2993.full>

* The connection made here to lack of tenure of indigenous/forest dependent people is puzzling - presumably it is not indigenous people (generally reliant on hunting/gathering) that is responsible for this? Or if this is intended to imply that it is because of lack of tenure that forest people can't keep the farmers out of their lands, this should be clarified.

* Discussion of some drivers is superficial e.g. discussion of poaching and trafficking focused on lack of law enforcement rather than highlighting underlying drivers of poaching/IWT, which can include dispossession, lack of incentives to conserve, lack of legal rights to sustainably use etc (see e.g.

<https://onlinelibrary.wiley.com/doi/pdf/10.1111/conl.12082>), as highlighted in earlier discussion.

*There is no clear integrated discussion of root causes here - proximate drivers are discussed (spread of agriculture, poorly managed forestry, poaching etc), sometimes with reference to root causes like population growth, and sometimes without. Annex D, which apparently has a diagram showing root causes, is missing.

Barriers:

* This section is not clearly and coherently organised - a clearer and more logical breakdown of broad context; proximate threats; root causes; and barriers to change would be really helpful.

*Much of this material reads as articulating drivers of harm, rather than barriers to change (and indeed much is phrased as drivers e.g. "Conflicting and isolated sectoral developments...lead to habitat loss...").

* Each barrier has a lot of rather unrelated points lumped in together, without a clearly articulated conceptual grouping. For example, in the first, the lack of community rights to manage land does not fit well under the heading "Conflicting and isolated sectoral developments..". While lack of these rights does raise conflicts over land use, it is a much broader point that also leads to other issues, so this is not a good fit. This barrier might be better named something like "Lack of integrated land use planning" and be one of the root causes of deforestation etc. In the third barrier, too, there are many disparate elements lumped together. Most of it appears to be linked by being about lack of incentives for biodiversity-friendly livelihood/economic

		<p>*Barrier 3: Note that there are some models of community management in the region - it is an overly strong statement to say their engagement in PA management and benefit-sharing is lacking. Rather, perhaps better to highlight there is a need for strengthening, scaling up and learning from positive examples. Important to note that the major, or at least very important, benefits of sustainable use for forest dependent communities will generally be subsistence use - food, medicine, cultural uses etc, rather than commercial (though recognition of scope for these is welcome).</p>	
	<p>For multiple focal area projects: does the problem statement and analysis identify the drivers of environmental degradation which need to be addressed through multiple focal areas; and is the objective well- defined, and can it only be supported by integrating two, or more focal areas objectives or programs?</p>		

2) the baseline scenario or any associated baseline projects	Is the baseline identified clearly?	*The baseline section does not give a clear picture of the current trajectory of environmental change in the region, but rather of what is being planned or underway in the region. If this is what is intended by the baseline here this is fine, but it would be helpful to have a clearer baseline on the actual on-the-ground biodiversity/forest/climate parameters that are the subject of the program. As written here it is mainly a list of what various donors/agencies are currently planning to do, without enough detail to understand how these affect the situation on the ground, although some of the country baselines (e.g. for CAR and ROC) do give a clearer idea of the on-the-ground baseline. There is more useful comment on the baseline on p45 which could be incorporated here, and in the section on Incremental/additional cost reasoning - these sections are more helpful to the reader in understanding the baseline situation.	
	Does it provide a feasible basis for quantifying the project's benefits?	No, but this detail will be developed through child projects.	This has been provided in the project's logical framework and the core indicators
	Is the baseline sufficiently robust to support the incremental (additional cost) reasoning for the project?	Baseline information for the overall program lists numerous programs and ongoing activities, organizations, etc. as per usual. As part of the CBSL IP, it would be very useful if the coordination grant in developing a platform could provide detailed information on all of these programs in a spatially explicit manner to show how they related to each other and how this project will add value in terms of overall global (and local) benefits.	
	For multiple focal area projects:		

	are the multiple baseline analyses presented (supported by data and references), and the multiple benefits specified, including the proposed indicators;		
	are the lessons learned from similar or related past GEF and non-GEF interventions described; and	No lessons from past work are described, and drawing such lessons would be extremely helpful.	Some lessons learnt have been presented in the baseline section
	how did these lessons inform the design of this project?	It is not clear any past lessons have informed this.	

<p>3) the proposed alternative scenario with a brief description of expected outcomes and components of the project</p>	<p>What is the theory of change?</p>	<p>Annex 5, a diagram of the TOC, is not included. The TOC is described to some extent in the text, but as there is no logic of how each program component will address the key drivers described, it is hard to work out exactly what the TOC is. The program logic does not clearly and convincingly link root causes and proximate threats to program structure and outputs, or clearly identify critical assumptions in the logical chain. The components of the program (which are confusingly given substantively different names at different points) (e.g. (i. integrated land use planning ii. Maintaining/enhancing connectivity in key landscapes iii. Sustainable use outside PAs) are articulated in terms of how they address the four identified barriers, without linking this back to underlying drivers/root causes that were identified earlier. For example, the document states ?The single most important national policy issue related to biodiversity conservation is land and resource ownership?, but there are no program components that clearly link to and address this driver. While assumptions and risks for program success are articulated at a general level, it would be helpful to integrate these into a graphic TOC, to identify critical assumptions that underlie particular causal pathways in the TOC ? this would indicate what parts of the program are dependent on what assumptions.</p> <p>One important assumption/risk is about forest-dependent, particularly indigenous, people, being able to participate effectively in consultations/planning, should be highlighted ? there are substantial barriers to this and a long history of marginalisation in such deliberations. This underpins achievement of much of the program?s desired outcome (particularly given small scale conversion to agriculture is a key driver of forest loss), so deserves explicit and careful attention.</p>	<p>A diagram TOC has been developed, with links between threats and root causes and the project components/outputs.</p>
---	--------------------------------------	---	---

	<p>What is the sequence of events (required or expected) that will lead to the desired outcomes?</p>	<p>The PFD indicates the four program components will address the four barriers, with (it is implied) each addressing one barrier. But how the components link back to the drivers and root causes is not well articulated. This comes back to the unclear articulation of the drivers and root causes to begin with. And the linkage of each program component to its corresponding driver is weak. For example, component (ii), "the long-term viability of forests providing important habitat... is improved by maintaining/enhancing connectivity... " is linked to overcoming barrier (ii) "forest landscape sustainability is compromised by poor governance of protected areas, buffer zones and corridors". But improving connectivity doesn't address poor governance. This seems rather conceptually confused. The diagram may help.</p> <p>The discussion on p45 under integration is much clearer in indicating how exactly the program is intended to shift the baseline (in relation to integrated planning at least). Including a similar description for the other components would be extremely helpful in clarifying the TOC and enabling assumptions and risks to be articulated.</p>	
	<p>? What is the set of linked activities, outputs, and outcomes to address the project's objectives?</p>		

? Are the mechanisms of change plausible, and is there a well-informed identification of the underlying assumptions?

Overall the mechanisms of change are plausible, but underlying assumptions are not well articulated. For example, the program highlights throughout the inclusion of forest-dependent people, but the assumptions around being able to do this effectively (and the barriers to doing this effectively) are not recognised anywhere.

*Component 1 is well described, and the text on p45 under integration makes clear how it is expect to address a key driver of degradation, the lack of integrated land use planning. It seems that empowering communities to manage forests/wildlife is part of the thinking here, from some of the language, but if this is among the objectives of this component it should be stated - otherwise they are likely to be politically marginalised in the process ("involvement" in practice can mean just being told what is going to happen, unless it is really clear that one of the aims is to entrench a legally-recognised management role). There needs to be a focus in this section on implementation as well as planning, and some sort of process to adaptively review and support implementation in the face of inevitable roadblocks. This may be inherent but it may be good to make it explicit to ensure the focus is on effective implementation, not just the planning phase. Or if this is done in component 4 perhaps indicate that clearly.

*Component 2 is clearer here. Re the indicators here, it is perhaps a bit concerning that these focus so narrowly on protected areas, as there is so much important biodiversity outside of current PAs. Note that many aspects of this component and others actually contribute to addressing wildlife crime (the benefits, better governance, inclusion) - addressing wildlife crime goes well beyond "catching poachers".

*Component 3 is extremely broad, but the logic of combining all "use" activities together is clearer here. Note, however, that this component is sometimes spoken of as being about empowering communities (see e.g. p 51, para beginning "Furthermore"..), whereas it is much broader than this and is about shifting private sector patterns of exploitation also. Note that text is rather inconsistent as whether it is trying to shift communities away from using the forest or to trying to use it sustainably (important to encompass both - former where uses are unlikely to be able to be made sustainable (e.g. primate hunting, high populaiton growth), latter where they can (most subsistence uses, NTFPs, community forestry etc)). The indicators here need work though - what about area under sustainable

STAP comment very specific to IP

	<p>Is there a recognition of what adaptations may be required during project implementation to respond to changing conditions in pursuit of the targeted outcomes?</p>		
<p>5) incremental/additional cost reasoning and expected contributions from the baseline, the GEF trust fund, LDCF, SCCF, and co-financing</p>	<p>GEF trust fund: will the proposed incremental activities lead to the delivery of global environmental benefits?</p>	<p>Yes, this seems clear. Note that in the CAR section we seem to have moved from the project's approach of empowering communities to play a role in managing forests/wildlife to "alternative" livelihoods - is making subsistence use sustainable not important here? In the DRC section, where it says "private" land - is this intended to mean community land? Nothing on wild meat in Gabon, where it is a major issue (NTFPs and wood won't feed people) (see e.g. CIFOR work https://www.jstor.org/stable/26267975?seq=1#metadata_info_tab_contents)?</p>	<p>STAP comment very specific to IP</p>
	<p>LDCF/SCCF: will the proposed incremental activities lead to adaptation which reduces vulnerability, builds adaptive capacity, and increases resilience to climate change?</p>		

6) global environmental benefits (GEF trust fund) and/or adaptation benefits (LDCF/SCCF)	Are the benefits truly global environmental benefits, and are they measurable?	Yes, reasonably.	
	Is the scale of projected benefits both plausible and compelling in relation to the proposed investment?	Yes.	
	Are the global environmental benefits explicitly defined?		
	Are indicators, or methodologies, provided to demonstrate how the global environmental benefits will be measured and monitored during project implementation?	Yes, although many indicators currently measure only outputs rather than outcomes (see above for example).	
	What activities will be implemented to increase the project's resilience to climate change?		

7) innovative, sustainability and potential for scaling-up	Is the project innovative, for example, in its design, method of financing, technology, business model, policy, monitoring and evaluation, or learning?	There are some important innovations here. Applying NC accounting. Integrated land use planning is innovative in this region at least. Incorporating lessons learned on how it has helped, AND what goes wrong in such processes, would be extremely reassuring. Strengthening indigenous/LC tenure/management rights is innovative in the region (though it has been ongoing for thirty years elsewhere), but likewise it would be reassuring to see some lessons learned from experience incorporated here in term of where/how this works and how it can go wrong. These are the main innovations - the rest appears to be about scaling up and coordinating what is already going on.	Lessons learned from land use planning processes in the region will be identified during the project and taken in consideration in EG land use planning activities supported by the project. Similarly, lessons learnt in the Congo Basin with regards to the effective participation of local communities in PA governance will be used in the development of activities of component 2.
	Is there a clearly-articulated vision of how the innovation will be scaled-up, for example, over time, across geographies, among institutional actors?	Yes, fairly clear, and effort and resources devoted to this.	
	Will incremental adaptation be required, or more fundamental transformational change to achieve long term sustainability?	Transformational change will be needed (i.e. through NCA or other means) to provide an attractive alternative to large scale logging, mining, forest concessions, etc. that are planned for the Congo Basin and which are expected to contribute to much needed economic growth and poverty alleviation.	

<p>1b. Project Map and Coordinates. Please provide geo- referenced information and map where the project interventions will take place.</p>	<p>Was unable to locate map or georeferenced data.</p>	<p>A map has been provided</p>
---	--	--------------------------------

<p>2. Stakeholders</p> <p>. Select the stakeholders that have participated in consultations during the project identification phase: Indigenous people and local communities; Civil society organizations; Private sector entities. If none of the above, please explain why. In addition, provide indicative information on how stakeholders, including civil society and indigenous peoples, will be engaged in the project preparation, and their respective roles and means of engagement.</p>	<p>Have all the key relevant stakeholders been identified to cover the complexity of the problem, and project implementation barriers?</p>	<p>Yes</p>	
---	--	------------	--

	<p>What are the stakeholders? roles, and how will their combined roles contribute to robust project design, to achieving global environmental outcomes, and to lessons learned and knowledge?</p>	<p>Fairly clear</p>	
<p>3. Gender Equality and Women's Empowerment. Please briefly include below any gender dimensions relevant to the project, and any plans to address gender in project design (e.g. gender analysis). Does the project expect to include any gender-responsive measures to address gender gaps or promote gender equality and women</p>	<p>Have gender differentiated risks and opportunities been identified, and were preliminary response measures described that would address these differences?</p>	<p>Strongly recognized, although assumptions and risks here not clearly articulated (e.g. structural barriers to women's participation (family responsibilities, male opposition etc))</p>	<p>A gender action plan has been developed to ensure effective participation of women.</p>

<p>empowerment? Yes/no/ tbd. If possible, indicate in which results area(s) the project is expected to contribute to</p> <p>gender equality: access to and control over resources;</p> <p>participation and decision-making; and/or economic benefits or services. Will the project?s results framework</p> <p>or logical framework include gender-sensitive indicators?</p> <p>yes/no /tbd</p>			
	<p>Do gender considerations hinder full participation of an important stakeholder group (or groups)? If so, how will these obstacles be addressed?</p>		

<p>5. Risks. Indicate risks, including climate change, potential</p> <p>social and environmental risks that might prevent the project objectives from being achieved, and, if possible,</p>	<p>Are the identified risks valid and comprehensive? Are the risks specifically for things outside the project's control?</p>	<p>*Risks are generally well articulated. Note that there are real barriers to effective participation of IPLCs and women in consultations (people with little political power often unable to speak out clearly in support of their own interests, unable to attend meetings, language barriers, may be subject to (violent) reprisals from others, etc.) These risks will need proactive strategies and targeted expertise to mitigate. The mitigation measure for Risk 2 re divergence of economic interests is unconvincing. Several of the risks appear to justify the existence of the program itself (for example R8 on coordination and R 11 on duplication. A very real risk is R10 on conflict (medium to high) but the mitigation measure doesn't seem to account for how projects might be designed differently as a result (see Ratner, B.D. 2018. Environmental security: dimensions and priorities. Scientific and Technical Advisory Panel to the Global Environment Facility. Washington, DC.)</p>	<p>Effective participation of IPLCs and women has been included in the risk section. A gender action plan has been developed to ensure active participation of women.</p> <p>The project has been oriented towards less national-level actions, and more local level activities, thereby making participation of forest dependent people evident (the majority of local communities are at least partly forest dependent). No indigenous people have officially been identified in the project targeted area, apart from a family of pygmies living to the east of Rio Campo Nature Reserve, close to the northern border with Cameroun, and no longer leading a traditional way of life. This family, along with other forest dependent people will be consulted and will participate in various project activities. There is currently insufficient information about the vulnerable groups in the sites influenced by the project (e.g. elderly people, persons with disabilities, children, ethnic minorities, displaced people, people living in poverty, marginalised or discriminated individuals or groups, among others). The Social Assessment for Protected Areas (SAPA) and Site Assessment for Governance and Equity</p>
--	---	---	---

<p>propose measures that address these risks to be further developed during the project design</p>			<p>(SAGE) that will be conducted at project inception in all 5 PAs will identify vulnerable groups in the 5 PAs and the buffer zones. The Environmental and Social Management Framework developed thereafter will include detailed guidelines on consultation and participation of vulnerable groups.</p>
	<p>Are there social and environmental risks which could affect the project?</p>		
	<p>For climate risk, and climate resilience measures:</p>		
	<p>? How will the project's objectives or outputs be</p>		

	<p>affected by climate risks over the period 2020 to 2050, and have the impact of these risks been addressed adequately?</p>		
	<p>? Has the sensitivity to climate change, and its impacts, been assessed?</p>		
	<p>? Have resilience practices and measures to address projected climate risks and impacts been considered? How will these be dealt with?</p>		
	<p>? What technical and institutional capacity, and information, will be needed to address climate risks and resilience enhancement measures?</p>		

<p>6. Coordination. Outline the coordination with other relevant GEF-financed and other related initiatives</p>	<p>Are the project proponents tapping into relevant knowledge and learning generated by other projects, including GEF projects?</p>	<p>There is little evidence of this.</p>	
	<p>Is there adequate recognition of previous projects and the learning derived from them?</p>	<p>"</p>	
	<p>Have specific lessons learned from previous projects been cited?</p>	<p>"</p>	
	<p>How have these lessons informed the project's formulation?</p>	<p>"</p>	
	<p>Is there an adequate mechanism to feed the lessons learned from earlier projects into this project, and to share lessons learned from it into future projects?</p>	<p>"</p>	

<p>8. Knowledge management. Outline the ?Knowledge Management Approach? for the project, and how it will contribute to the project?s overall impact, including plans to learn from relevant projects, initiatives and evaluations.</p>	<p>What overall approach will be taken, and what knowledge management indicators and metrics will be used?</p>	<p>This is good.</p>	
	<p>What plans are proposed for sharing, disseminating and scaling-up results, lessons and experience?</p>		
<p>STAP advisory response</p>	<p>Brief explanation of advisory response and action proposed</p>		

1. Concur	STAP acknowledges that on scientific or technical grounds the concept has merit. The proponent is invited to approach STAP for advice at any time during the development of the project brief prior to submission for CEO endorsement.		
------------------	--	--	--

* In cases where the STAP acknowledges the project has merit on scientific and technical grounds, the STAP will recognize this in the screen by stating that *?STAP is satisfied with the scientific and technical quality of the proposal and encourages the proponent to develop it with same rigor. At any time during the development of the project, the proponent is invited to approach STAP to consult on the design.?*

<p>2. Minor issues to be considered during project design</p>	<p>STAP has identified specific scientific/technical suggestions or opportunities that should be discussed with the project proponent as early as possible during development of the project brief. The proponent may wish to:</p>		
	<p>(i) Open a dialogue with STAP regarding the technical and/or scientific issues raised;</p>		
	<p>(ii) Set a review point at an early stage during project development, and possibly agreeing to terms of reference for an independent expert to be appointed to conduct this review.</p>		

	<p>The proponent should provide a report of the action agreed and taken, at the time of submission of the full project brief for CEO endorsement.</p>		
<p>3. Major issues to be considered during project design</p>	<p>STAP proposes significant improvements or has concerns on the grounds of specified major scientific/technical methodological issues, barriers, or omissions in the project concept. If STAP provides this advisory response, a full explanation would also be provided. The proponent is strongly encouraged to:</p>		

	<p>(i) Open a dialogue with STAP regarding the technical and/or scientific issues raised;</p> <p>(ii) Set a review point at an early stage during project development including an independent expert as required. The proponent should provide a report of the action agreed and taken, at the time of submission of the full project brief for CEO endorsement.</p>	
--	---	--

ANNEX C: Status of Utilization of Project Preparation Grant (PPG).
(Provide detailed funding amount of the PPG activities financing status in the table below:

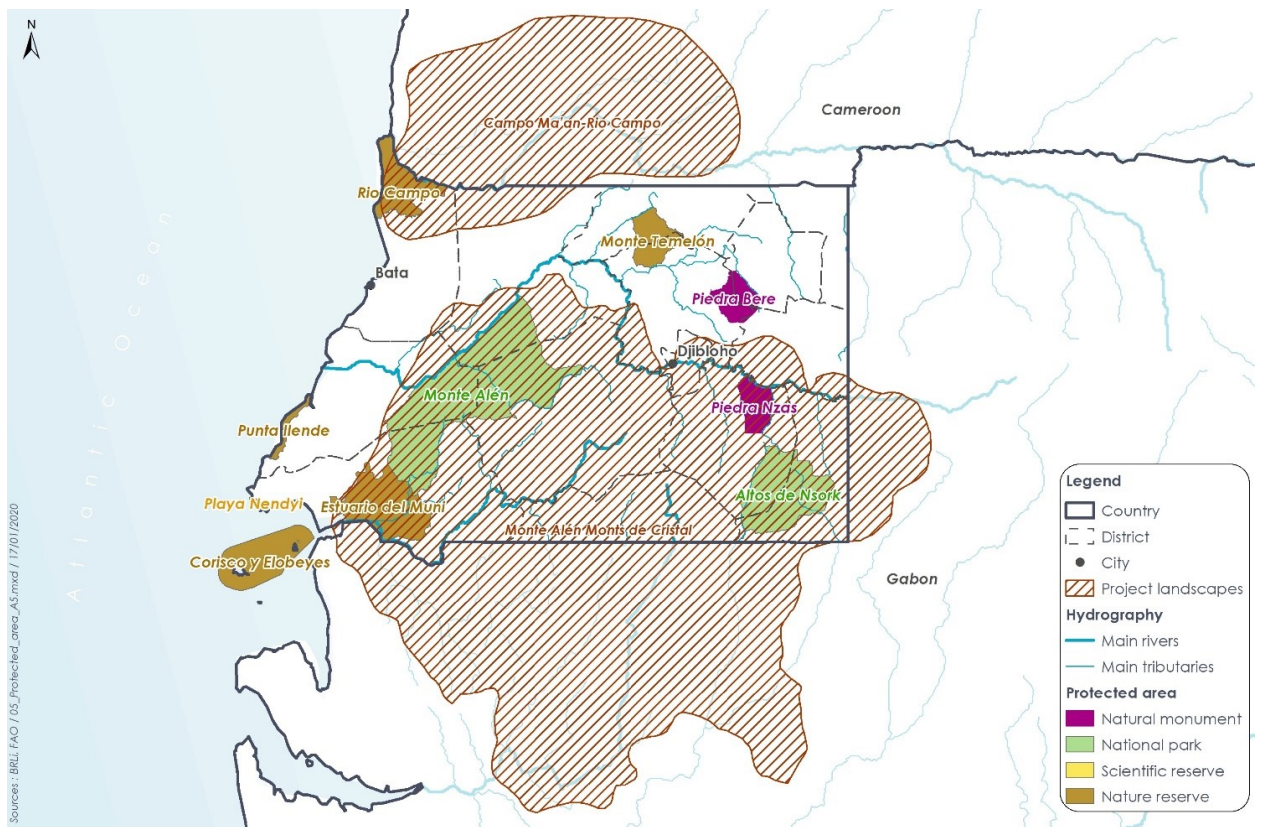
<i>Project Preparation Activities Implemented</i>	<i>GETF/LDCF/SCCF Amount (\$)</i>		
	<i>Budgeted Amount</i>	<i>Amount Spent To date</i>	<i>Amount Committed</i>
PPG International Consultancy Firm	100 570,00	77 7256,00	23 314,00
Travel International Consultancy Firm	19 348,28	19 348,29	0,00
PPG National Consultant	15 000,00	12 000,00	3 000,00
PPG translation	2 250,00		00,00
PPG workshops inception and validation	14 204,66	8 366,57	00,00

Total	151,372.94	116,970.86	26,314.00
-------	------------	------------	-----------

ANNEX D: Project Map(s) and Coordinates

Please attach the geographical location of the project area, if possible.

The geographical scope of the project covers more than half of Equatorial Guinea and has been defined as two forest landscapes: Monte Alén and Rio Campo. These landscapes include the provinces Litoral, Centro Sur, Wele Nzas and Djibloho, which encompass 11 districts. A map of the project landscapes is presented below.

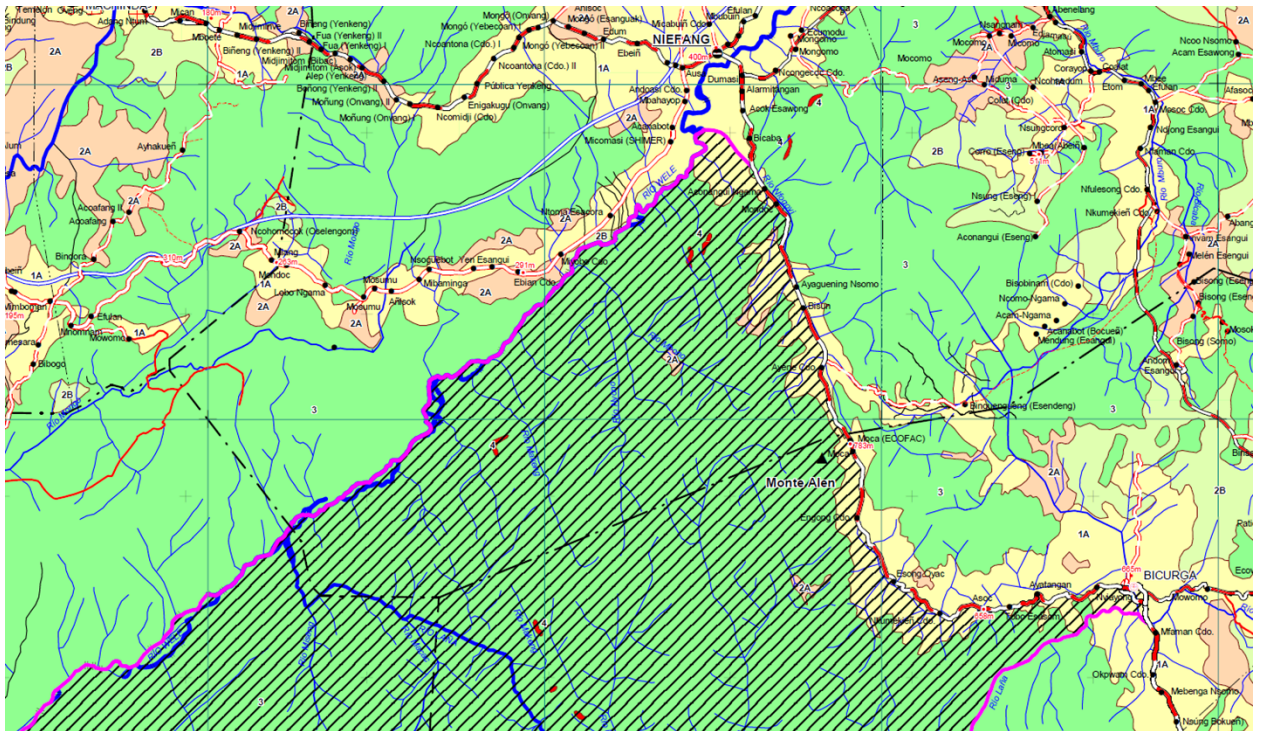


The 5 protected areas present in the landscapes will be project implementation sites:

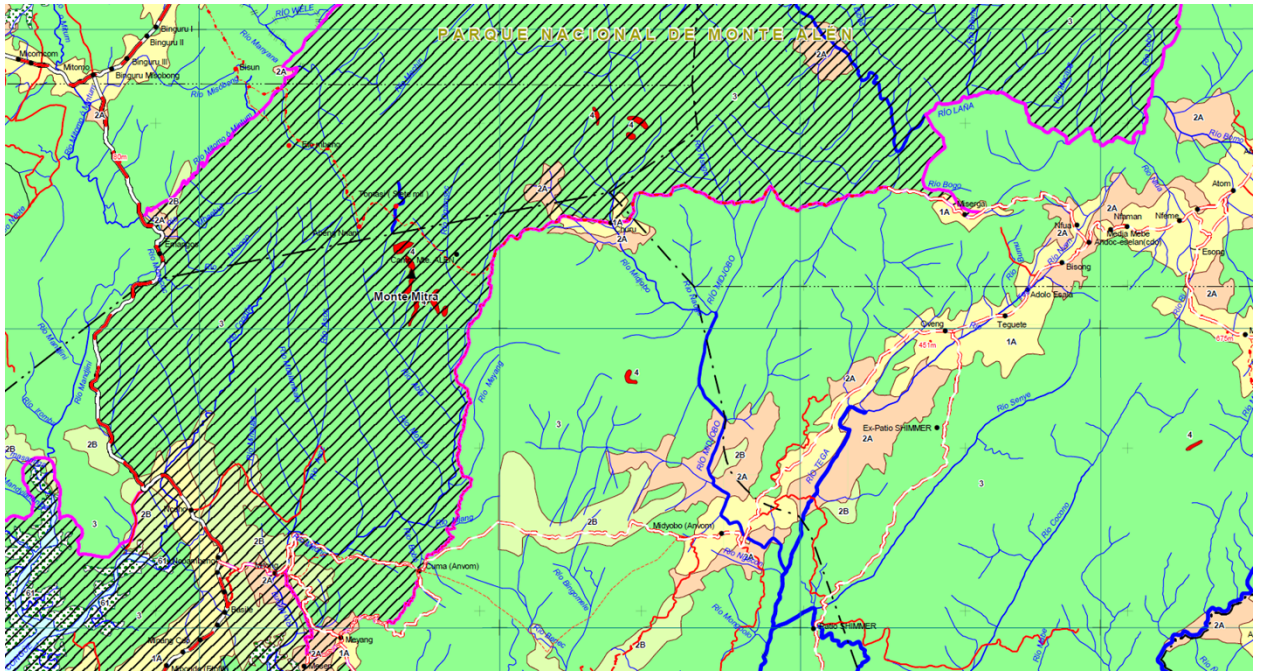
Protected Area	Latitude	Longitude
Monte Alén National Park	1°40'01.61"N	10°17'58.76"E
Altos de Nsork National Park	2°20'06.67"N	9°49'00.79"E

Piedra Nzas Natural Monument	1°05'02.74"N	97°42'00.15"E
Rio Muni Nature Reserve	1°24'59.18"N	111°04'10.84"E
Rio Campo Nature Reserve	1°08'04.68"N	111°16'01.13"E

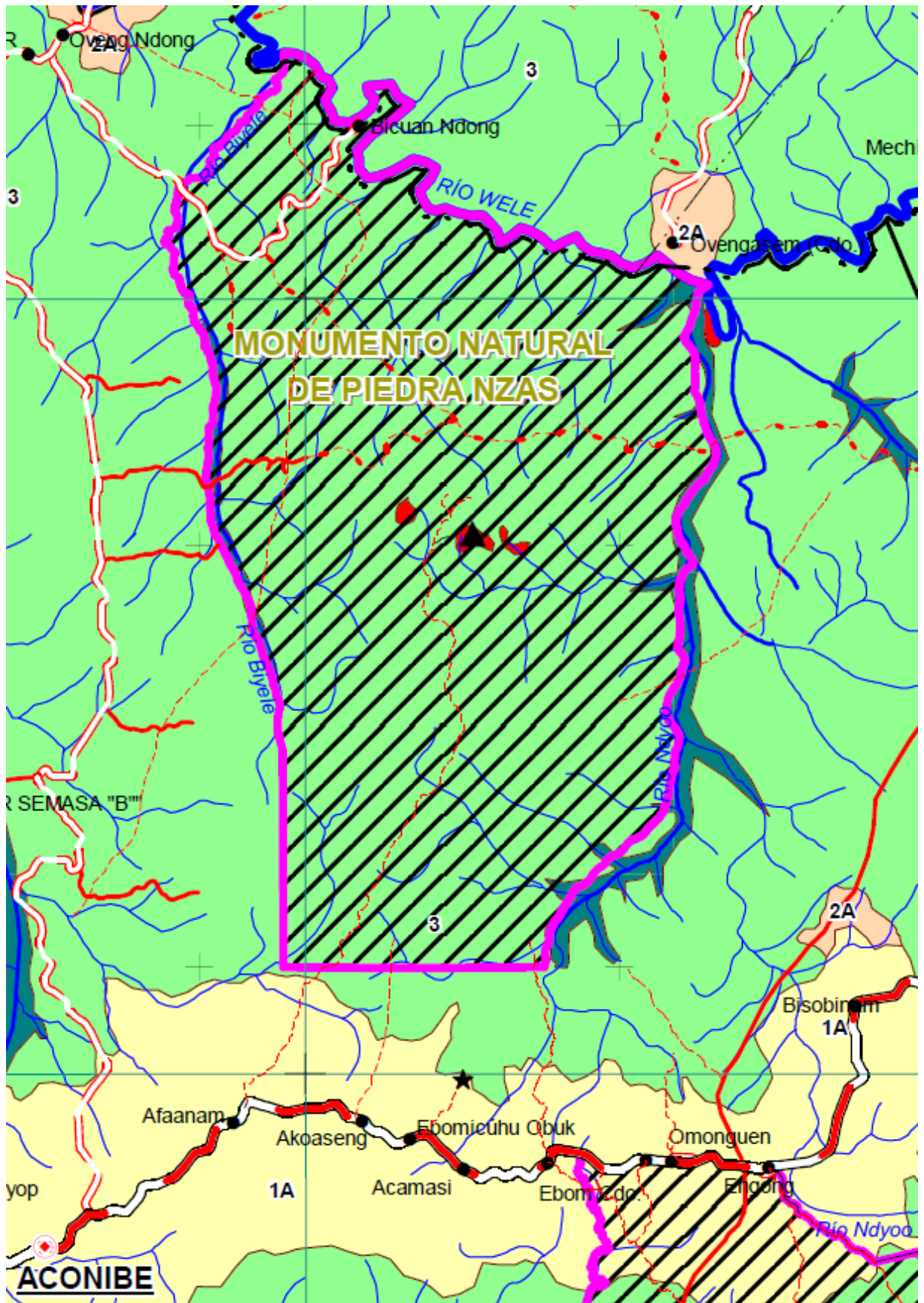
The 5 protected areas present in the landscapes will be project implementation sites: Monte Alen National Park, Altos de Nsork National Park, Piedra Nzas Natural Monument, Rio Muni Nature Reserve, Rio Campo Nature Reserve.

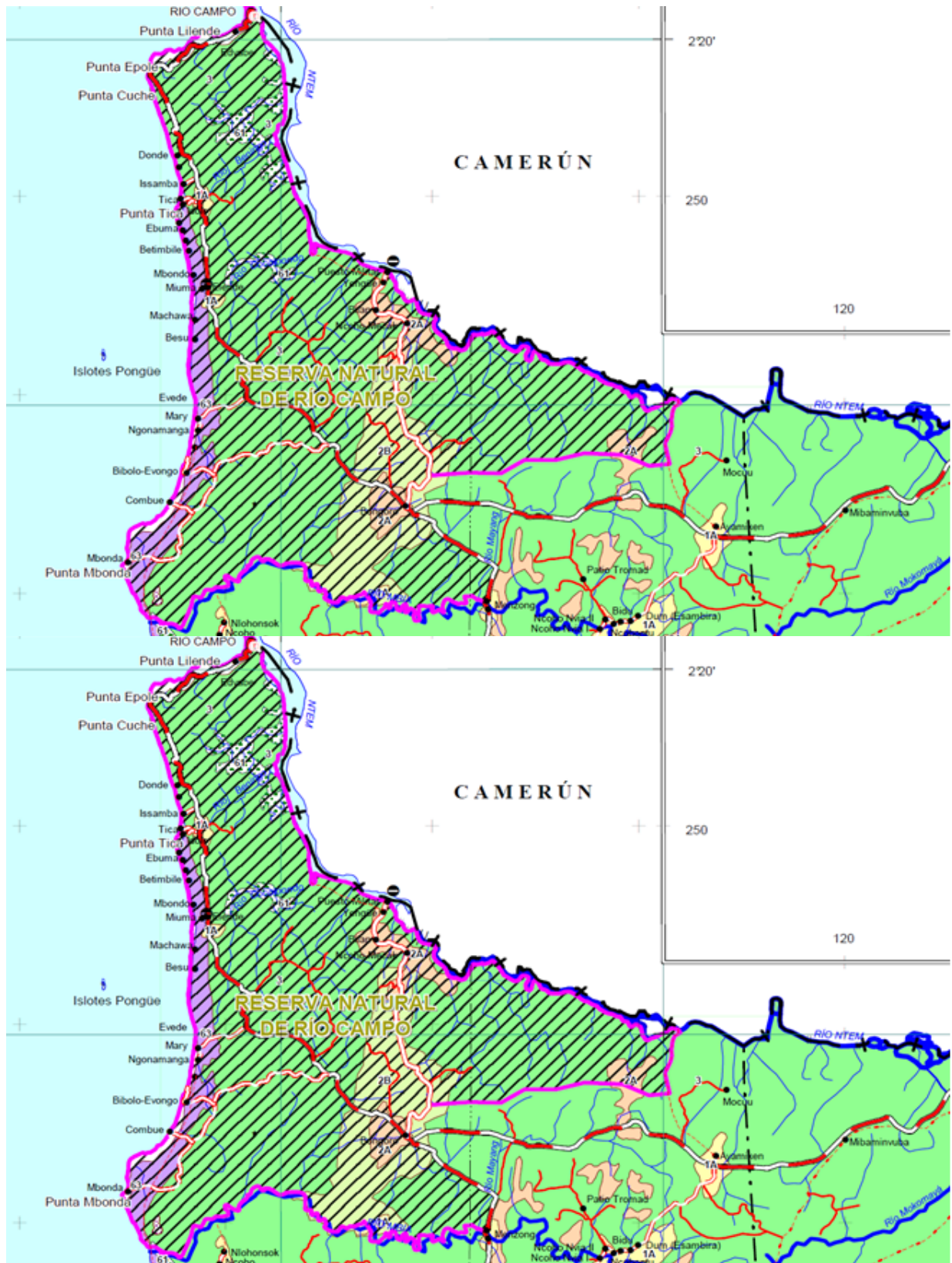


Map of the north of Monte Alen National Park and surrounding communities



Map of the south of Monte Alen National Park and surrounding communities





Map of Rio Campo Nature Reserve and surrounding communities

	Capital de la Región Continental	B A T A		Carretera principal asfaltada
	Capital de provincia	EBIBEYIN		Carretera principal no asfaltada
	Cabecera de distrito	AKONIBE		Carretera secundaria y pista
	Cabecera de municipio	MONGOMEYEN		Pista Forestal
	Poblado			Pista abandonada
	Frontera internacional			Camino o Sendero
	Límite de provincia			Area habitada, urbanización
	Límite de distrito			Puerto y Aeropuerto
	Límite de municipio			Puesto de Aduana
	Límite de area protegida			Red hidrográfica principal
	Puntos altimétricos (m)			Red hidrográfica secundaria
	Puente, Balsa			Red hidrográfica terciara
	Carretras en proceso de construcción			Cascada, rápido
				Atovías

	Cultivos y bicoros		Bosques y otras formaciones vegetales de suelo delgado y rocas
	Fincas antiguas		Bosques y pantanos litorales
	Cultivos dispersos, bicoros de variable edad		Bosques y pantanos de las zonas aluviales
	Bicoros antiguos, cultivos raros, relictos de bosques		Manglares
	Bosque denso		Sabanas edáficas litorales
			Bosques sobre formaciones arenosas litorales

	Cultivos y bicoros		Bosques y otras formaciones vegetales de suelo delgado y rocas
	Fincas antiguas		Bosques y pantanos litorales
	Cultivos dispersos, bicoros de variable edad		Bosques y pantanos de las zonas aluviales
	Bicoros antiguos, cultivos raros, relictos de bosques		Manglares
	Bosque denso		Sabanas edáficas litorales
			Bosques sobre formaciones arenosas litorales

	Capital de la Región Continental	BATA		Carretera principal asfaltada
	Capital de provincia	EBIBEYIN		Carretera principal no asfaltada
	Cabecera de distrito	AKONIBE		Carretera secundaria y pista
	Cabecera de municipio	MONGOMEYEN		Pista Forestal
	Poblado			Pista abandonada
	Frontera internacional			Camino o Sendero
	Límite de provincia			Area habitada, urbanización
	Límite de distrito			Puerto y Aeropuerto
	Límite de municipio			Puesto de Aduana
	Límite de area protegida			Red hidrográfica principal
	Puntos altimétricos (m)			Red hidrográfica secundaria
	Puente, Balsa			Red hidrográfica terciara
	Carretras en proceso de construcción			Cascada, rápido
				Atovías

ANNEX E: Project Budget Table

Please attach a project budget table.

The project budget is attached to this submission in a separate file

ANNEX F: (For NGI only) Termsheet

Instructions. Please submit a finalized termsheet in this section. The NGI Program Call for Proposals provided a template in Annex A of the Call for Proposals that can be used by the Agency. Agencies can use their own termsheets but must add sections on Currency Risk, Co-financing Ratio and Financial Additionality as defined in the template provided in Annex A of the Call for proposals. Termsheets submitted at CEO endorsement stage should include final terms and conditions of the financing.

ANNEX G: (For NGI only) Reflows

Instructions. Please submit a reflows table as provided in Annex B of the NGI Program Call for Proposals and the Trustee excel sheet for reflows (as provided by the Secretariat or the Trustee) in the Document Section of the CEO endorsement. The Agency is required to quantify any expected financial return/gains/interests earned on non-grant instruments that will be transferred to the GEF Trust Fund as noted in the Guidelines on the Project and Program Cycle Policy. Partner Agencies will be required to comply with the reflows procedures established in their respective Financial Procedures Agreement with the GEF Trustee. Agencies are welcomed to provide assumptions that explain expected financial reflow schedules.

ANNEX H: (For NGI only) Agency Capacity to generate reflows

Instructions. The GEF Agency submitting the CEO endorsement request is required to respond to any questions raised as part of the PIF review process that required clarifications on the Agency Capacity to manage reflows. This Annex seeks to demonstrate Agencies' capacity and eligibility to administer NGI resources as established in the Guidelines on the Project and Program Cycle Policy, GEF/C.52/Inf.06/Rev.01, June 9, 2017 (Annex 5).