

# GEF-8 WORLD BANK PCN STAGE/GEF DATA SHEET

## TABLE OF CONTENTS

<b>GENERAL PROJECT INFORMATION .....</b>	<b>3</b>
Project Summary .....	4
Indicative Project Overview .....	7
Coordination and Cooperation with Ongoing Initiatives and Project .....	10
Core Indicators .....	16
<b>A. ALIGNMENT WITH GEF-8 PROGRAMMING STRATEGIES AND COUNTRY/REGIONAL PRIORITIES.....</b>	<b>18</b>
<b>B. POLICY REQUIREMENTS.....</b>	<b>18</b>
Gender Equality and Women’s Empowerment:.....	18
Stakeholder Engagement .....	18
Private Sector .....	20
Environmental and Social Safeguard (ESS) Risks .....	20
<b>C. OTHER REQUIREMENTS .....</b>	<b>20</b>
Knowledge management .....	20
<b>ANNEX A: FINANCING TABLES .....</b>	<b>20</b>
GEF Financing Table .....	20
Project Preparation Grant (PPG) .....	21
Sources of Funds for Country Star Allocation.....	21
Indicative Focal Area Elements .....	21
Indicative Co-financing .....	21
<b>ANNEX B: ENDORSEMENTS .....</b>	<b>22</b>
GEF Agency(ies) Certification .....	22
Record of Endorsement of GEF Operational Focal Point (s) on Behalf of the Government(s):.....	22
<b>ANNEX C: PROJECT LOCATION .....</b>	<b>22</b>
<b>ANNEX D: ENVIRONMENTAL AND SOCIAL SAFEGUARDS SCREEN AND RATING .....</b>	<b>24</b>
<b>ANNEX E: RIO MARKERS.....</b>	<b>25</b>
<b>ANNEX F: TAXONOMY WORKSHEET .....</b>	<b>25</b>

## General Project Information

### Project Title

Scaling up Nature-Based Solutions for Climate Resilience and Land Restoration across Burundi's fragile colline landscapes

### Region

Burundi

### GEF Project ID

11397

### Country(ies)

Burundi

### Type of Project

FSP

### GEF Agency(ies):

World Bank

### GEF Agency ID

### Executing Partner

Ministry of Environment, Agriculture and Livestock of Burundi (MINEAGRIE)

### Executing Partner Type

Government

### GEF Focal Area (s)

Climate Change

### Submission Date

10/18/2023

### Project Sector (CCM Only)

Climate Change Adaptation Sector

### Taxonomy

Focal Areas, Land Degradation, Sustainable Land Management, Climate Change, Climate Change Adaptation, Climate resilience, Community-based adaptation, Least Developed Countries, Sustainable Livelihoods, Influencing models, Strengthen institutional capacity and decision-making, Stakeholders, Local Communities, Beneficiaries, Private Sector, Gender Equality, Gender Mainstreaming, Sex-disaggregated indicators, Capacity, Knowledge and Research, Capacity Development, Knowledge Generation, Training

### Type of Trust Fund

LDCF

### Project Duration (Months)

60

### GEF Project Grant: (a)

18,348,624.00

### GEF Project Non-Grant: (b)

0.00

### Agency Fee(s) Grant: (c)

1,651,376.00

### Agency Fee(s) Non-Grant (d)

0.00

### Total GEF Financing: (a+b+c+d)

20,000,000.00

### Total Co-financing

100,000,000.00

### PPG Amount: (e)

0.00

### PPG Agency Fee(s): (f)

0.00

### PPG total amount: (e+f)

### Total GEF Resources: (a+b+c+d+e+f)

0.00

20,000,000.00

#### Project Tags

CBIT: No NGI: No SGP: No Innovation: No

#### Project Summary

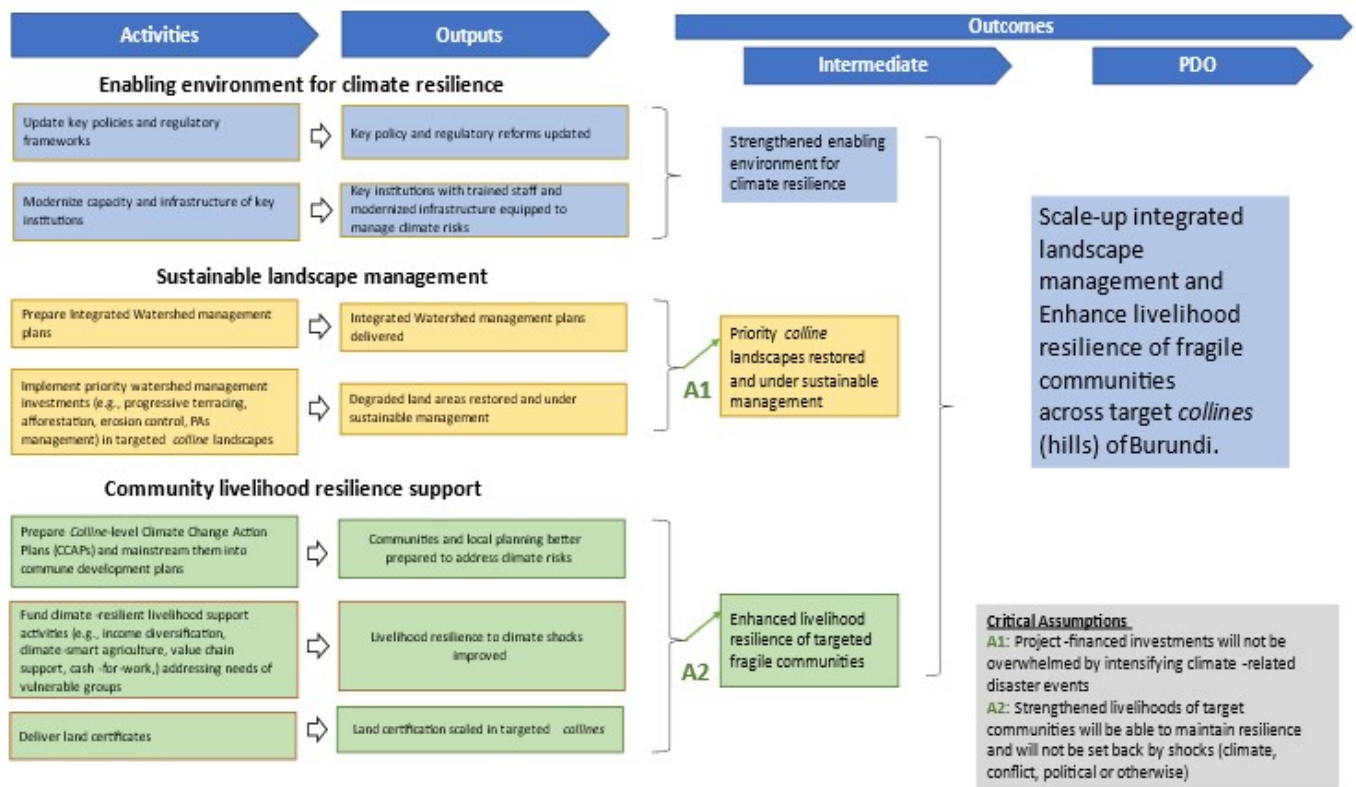
Provide a brief summary description of the project, including: (i) what is the problem and issues to be addressed? (ii) what are the project objectives, and if the project is intended to be transformative, how will this be achieved? (iii), how will this be achieved (approach to deliver on objectives), and (iv) what are the GEBs and/or adaptation benefits, and other key expected results. The purpose of the summary is to provide a short, coherent summary for readers. The explanation and justification of the project should be in section B “project description”. (max. 250 words, approximately 1/2 page)

**The proposed Burundi Climate Resilience Project (BCRP) or Projet de Resilience Climatique des Collines du Burundi (PRCCB) will scale up landscape management and enhance the livelihoods resilience of communities threatened by intensifying climate and land degradation risks across Burundi.** It is a multisector rural development operation focused on the country’s most at-risk rural hillsides (see Annex 2). The vulnerability of colline communities is influenced by multiple overlapping challenges beyond the scope of the proposed project (demography, conflict, and national economic fragility). However, the project can make major contributions to reducing vulnerability by addressing limited institutional capacity and by investing in improving local resilience in targeted communities.

**Climate and fragility remain a frontier area of work in the World Bank Group and worldwide.** There is growing recognition of the significant impacts of climate change and related risks in settings affected by fragility, conflict, and violence (FCV). Still, we have yet to reach a robust global consensus on the specific pathways through which climate change exacerbates fragility, or on the investments needed to tackle climate drivers of fragility in low-capacity, poorly resourced FCV countries. Addressing the climate-conflict nexus will be a target focus area of this project. Burundi will offer one of the first country cases in which climate change, conflict, and land degradation are addressed together in a multi-sector approach. The project will make targeted investments to address drivers of fragility at the local level, as identified with target communities through colline-level climate action plans mainstreamed into communal development plans. It will also seek to identify the most vulnerable people and communities, and prioritize them for investments, using multi-risk vulnerability hotspot mapping and socio-economic vulnerability registries.

The Theory of Change (Figure 2) is targeted to the following problem statement: **The current lack of coordination, capacity, resources, awareness, expertise, and integrated management of land and climate risks in Burundi adversely affect the livelihoods and resilience of rural communities affected by climate change.**

**The project will support the Government of Burundi to strengthen its capacity to anticipate, monitor, and act on intensifying climate change and land degradation risks while enhancing livelihood opportunities for vulnerable people.** Focus will be placed on building national and local capacity in Burundi to co-design and co-implement a multi-sectoral process for achieving climate resilience while strengthening climate-resilient livelihoods to improve the economic prospects of households in targeted areas. The proposed *investment project* (US\$100 million) and GEF grant (US\$18.2 million) seeks to strengthen the enabling environment for climate resilience (Component 1), improve integrated management of priority at-risk watersheds (Component 2), and enhance the livelihood resilience of targeted communities (Component 3). The activities will be organized under three complementary components, along with project management and CERC components.



## Component 1: Enabling environment for climate resilience

1. **The activities of this component** will improve policy, regulations, administrative procedures, and institutional capacity. It will enable a whole-of-society climate and land governance approach and cross-sector collaboration among key stakeholders: national government agencies, local governments, civil society, academia, businesses, farmer cooperatives, schools, and households, including socially marginalized and disadvantaged groups. It will finance economy-wide and select sector-specific reforms: i) development of a policy and regulatory framework to facilitate more integrated and coordinated management, programmatic planning, and investment for addressing climate change and land degradation risks in Burundi; and (ii) capacity-building support to strengthen institutional, technical, and human capacities within relevant GoB agencies and departments for improved climate risk management. This approach will support vertical integration of political jurisdictions from local, national, regional, and international levels and a horizontal integration among multiple sectors. This component will finance goods, services, and possibly some works to provide technical assistance, policy, and planning support, as well as to cover recurrent expenditures, including operating costs. GEF resources will focus on supporting policies, plans, frameworks, and relevant institutions for enhanced climate adaptation. Expected outputs will be enhanced support to planning at national, sub-basin/watershed levels for effective climate risk management, sustainable landscape management, climate resilience and integrated water resources management, including within protected areas, as well as institutions equipped to address rising climate and land risks.

## Component 2: Sustainable landscape management

2. **This component** will finance the scale-up of sustainable landscape management (SLM) activities at the watershed level (terracing, reforestation, locally adapted farmer-led irrigation systems), including management of at-risk, vulnerable hillsides in protected areas. The subcomponents will include activities to: (i) prepare integrated watershed management plans, and (ii) restore and bring landscapes under

sustainable management. National-level leadership, technical guidance, and strategic policy planning will be tailored to each *watershed's* needs. Specific Watershed Sustainable Landscape Management (SLM) execution plans will be developed for each priority watershed targeted by the project and serve as the basis for identifying the package of land restoration activities needed on each watershed. GEF resources, in particular, will be dedicated to support the scale-up of nature-based solutions (NBS). Leveraging NBSs, landscape restoration and integrated watershed management measures (such as micro catchment water harvesting, managed aquifer recharge) will alleviate landslide, erosion, and flood risks currently affecting people, food production, livelihoods, and infrastructure. Strong stakeholder engagement is key to ensure that proposed NBS activities will be appropriate for the local context and to build local ownership, so the interventions are likely to be sustained over the long term.<sup>[ii]</sup> The component will finance goods, services, and civil works, including high-intensity public works that provide employment opportunities for local communities, such as tree replanting, as well as recurrent expenditures, including operating costs.

### **Component 3. Community livelihood resilience support**

- 3. This component will invest in activities to increase livelihood resilience of the project targeted communities. The subcomponents are likely to include investments to:** (i) prepare and mainstream Climate Change Action Plans (CCAPs) into commune development plans; (ii) support climate-resilient livelihoods for the most climate-vulnerable communities; and (iii) improve land security through land certification at scale in each target *colline*. This component will mobilize commune and *colline* leaders and equip them to prepare climate action plans, strengthen local early warning—early action systems and contingency plans and zoning regulations. It will also finance direct climate-resilient investment packages to support vulnerable communities' livelihood resilience and income diversification. This component builds on the lessons and successes of the Burundi Landscape Restoration and Resilience Project (P160601) and continues investing in community land tenure security, as an enabling condition for climate-resilient livelihood enhancement. The component will finance goods, services, and civil works, as well as recurrent expenditures, including operating costs.
  
- 4. Across the components, the project will prioritize equity, inclusion, and social cohesion—the essential ingredients for long-term resilience in the face of multi-risk fragility observed in Burundi's *collines*.** The project will have a well-developed gender and social inclusion focus, because women make up a disproportionate share of the population in rural *collines* (men are likelier to migrate to cities for work). The project will thus prioritize the inclusion of marginalized groups, including women, youth, internally displaced persons (IDPs, notably those driven out of their homes by climate-related disasters, or 89 percent of all IDPs as per latest IOM data), refugees, returnees, *Batwa* communities and other ethnic minorities, single mothers, and people with disabilities. Working closely with the ongoing social protection projects in the Burundi portfolio (see Annex 3), the project will build on ongoing efforts to prepare a national registry to identify the most vulnerable, as well as evidence from humanitarian operations to locate the most climate-afflicted and displaced. Other examples of project interventions to address social cohesion are upscaling *colline*-level land certification and registration activities to include recognition of land rights for the most vulnerable (widows, female-headed households, marginalized groups); digital cash-for-work transfers to local marginalized *batwa* communities for land restoration labor work; and providing space for community dialogue to addressing conflict-related trauma to further reduce social conflict risks and foster inclusion. These measures will help build shared prosperity and reduce multi-risk fragility in Burundi's *colline* landscapes.

5. **Performance-based financing options** will also be explored (linked either to watershed plans executed or land certificates delivered) to incentivize demand-driven delivery of project activities by national/local governments as well as sustainable financing mechanisms, with disbursement-linked indicators to be identified during project preparation.

#### Component 4. Project Implementation Support

6. **This component will finance activities related to project management and coordination, monitoring and evaluation (M&E), and communication.** It will finance operating costs of the project implementation unit, M&E of project activities, including impact evaluations, communication of project activities to different audiences, hiring of staff, goods, consultant services, workshops, and training.
- a. **M&E, Knowledge and Learning.** This component will finance implementation of a knowledge management system that will inform in real time lessons learnt to develop and scale up integrated landscape management execution plans at the level of each priority watershed. Lessons from the first set of ILM execution plans will serve to inform the subsequent sets, and real time data collection using kobo GEMS technologies will, support development of a robust M&E plan, baseline data collection and interactive data collection to support iterative planning and needed adjustment in project targets at annual work planning and midterm stage.
  - b. **Project management unit .** Operating costs of the project implementation unit and all project management costs.

[i] During preparation, the project will thoroughly consider the role of nature-based solutions for climate risk reduction in the design of infrastructure—from roads to sanitation systems, to hydropower plants, schools, and health facilities — building with nature to strengthen resilience of these systems to climate impacts. In Burundi’s rural *collines*, during heavy rainfall events, bridges are often cut off, leaving pupils stranded and unable to access their schools for weeks. The project will plant trees in areas that deliver co-Benefits for infrastructure resilience and ensure safe climate-resilient passages to schools to minimize these risks.

### Indicative Project Overview

#### Project Objective

To scale-up integrated landscape management and enhance livelihood resilience of fragile communities in target collines (hills) of Burundi.

#### Project Components

##### Component 1: Enabling environment for climate resilience

Component Type	Trust Fund
Technical Assistance	LDCF
GEF Project Financing (\$)	Co-financing (\$)
1,834,862.00	14,400,000.00

Outcome:

Strengthened enabling environment for climate resilience. Improve policy, regulations, administrative procedures, and institutional capacity, with a specific focus on the gender dimension

Output:

Key institutions with trained staff and modernized infrastructure equipped to manage climate risks.

Economy-wide and select sector-specific reforms: i) gender assessment of gaps of the institutional, policy and legislation framework to ensure an inclusive and equitable approach in addressing gender disparities and promoting women's empowerment within the project's scope and impact; (ii) development of a policy and regulatory framework to facilitate more integrated and coordinated management, programmatic planning, and investment for addressing climate change and land degradation risks in Burundi; and (iii) capacity-building support to strengthen institutional, technical, and human capacities within relevant GoB agencies and departments for improved climate risk management

## Component 2: Sustainable landscape management

Component Type	Trust Fund
Investment	LDCF
GEF Project Financing (\$)	Co-financing (\$)
15,290,762.00	40,000,000.00

Outcome:

Watershed management planning

Restoration of degraded landscapes

Output:

Integrated watershed management plans delivered - Specific Watershed Sustainable Landscape Management (SLM) execution plans will be developed for each priority watershed targeted by the project and serve as the basis for identifying the package of land restoration activities needed on each watershed. GEF resources, in particular, will be dedicated to support the scale-up of nature-based solutions (NBS).

degraded lands restored and under sustainable management - NbS for landscape restoration and integrated watershed management measures (such as micro catchment water harvesting, managed aquifer recharge) will alleviate landslide, erosion, and flood risks currently affecting people, food production, livelihoods, and infrastructure

Priority Colline landscape restored and under sustainable management

## Component 3: Community livelihood resilience support

Component Type	Trust Fund
Investment	LDCF
GEF Project Financing (\$)	Co-financing (\$)
	40,000,000.00

Outcome:

Community resilience planning: prepare and mainstream Climate Change Action Plans (CCAPs) into commune development plans



Climate-resilient livelihood support: support climate-resilient livelihoods for the most climate-vulnerable communities

Land certification: improve land security through land certification at scale in each target colline

Output:

Communities and local planning better prepared to address climate risks - mobilize commune and colline leaders, prioritizing women leaders, and equip them to prepare climate action plans, strengthen local early warning—early action systems and contingency plans and zoning regulations

Livelihood resilience to climate shocks improved - direct climate-resilient investment packages to support vulnerable communities' livelihood resilience and income diversification, with a particular focus on the capacity adaptation of women and vulnerable groups

Land certification scaled in targeted collines - upscaling colline-level land certification and registration activities to include recognition of land rights for women (women, widows, female-headed households, marginalized groups) to promote gender equitable access and tenure rights, prioritize the participation of women leaders in local climate action capacity building and planning activities; livelihoods resilience to climate shocks activities will emphasize enhancing the adaptive capacity of women in affected communities, digital cash-for-work transfers to local marginalized batwa communities for land restoration labor work; and providing space for community dialogue to addressing conflict-related trauma to further reduce social conflict risks and foster inclusion, with a special focus on gender related issues

Enhanced livelihood resilience of targeted fragile communities - direct climate-resilient investment packages to support vulnerable communities' livelihood resilience and income diversification, with a particular focus on the capacity adaptation of women and vulnerable groups

## M&E

Component Type	Trust Fund
Technical Assistance	LDCF
GEF Project Financing (\$)	Co-financing (\$)
350,000.00	1,000,000.00

Outcome:

M&E of project activities, including impact evaluations

Output:

**implementation of a knowledge management system** will inform in real time lessons learnt to develop and scale up integrated landscape management execution plans at the level of each priority watershed. Lessons from the first set of ILM execution plans will serve to inform the subsequent sets, and real time data collection using kobo GEMS technologies will, support development of a robust M&E plan, baseline data collection and interactive data collection to support iterative planning and needed adjustment in project targets at annual work planning and midterm stage

## Component Balances

Project Components	GEF Project Financing (\$)	Co-financing (\$)
Component 1: Enabling environment for climate resilience	1,834,862.00	14,400,000.00
Component 2: Sustainable landscape management	15,290,762.00	40,000,000.00
Component 3: Community livelihood resilience support		40,000,000.00
M&E	350,000.00	1,000,000.00
<b>Subtotal</b>	<b>17,475,624.00</b>	<b>95,400,000.00</b>
Project Management Cost	873,000.00	4,600,000.00
<b>Total Project Cost (\$)</b>	<b>18,348,624.00</b>	<b>100,000,000.00</b>

Please provide justification

## Coordination and Cooperation with Ongoing Initiatives and Project

Does the GEF Agency expect to play an execution role on this project?

If so, please describe that role here. Also, please add a short explanation to describe cooperation with ongoing initiatives and projects, including potential for co-location and/or sharing of expertise/staffing

Agency is not expected to play an execution role in this project. the project will be executed by the Ministry of the Environment, Agriculture, and Livestock (MINEAGRIE). MINEAGRIE the project's counterpart line ministry, has an overall policy and institutional mandate over climate, rural lands, and rural development, integrating water, agriculture, livestock, and environmental technical departments. These departments within MINEAGRIE include: (i) the National Hydrometeorological Service (Institut Géographique du Burundi, IGEBU), overseeing data collection, monitoring, and early warnings for observed climate and weather risks; (iii) the Extension Service (Bureaux Provinciaux de l'Environnement de l'Agriculture et de l'Élevage, BPEAE), providing extension services (research tools, techniques, seeds, and fertilizer) to rural farmers, with a dense network of extension agents based in every colline; (iv) the Office Burundais de la Protection de l'Environnement (OBPE), in charge of Environmental Monitoring, National Parks, Protected Areas and Climate funds management; and (v) the Direction Générale de l'Aménagement, de l'Irrigation et de la Protection du Patrimoine Foncier (DGPATI, in charge of rural land administration).

Furthermore, the Prime Minister's Office is home to the Secretariat Permanent de la Commission Foncière Nationale (SP/CFN), the national land commission; the Interior Ministry is hosting the National Platform for Disaster Risk Reduction; the Justice Ministry is overseeing the Direction Nationale des Titres Fonciers, national directorate of land titles, while the Ministry of Finance is overseeing the national Directorate of Planning. Several other line ministries across climate-sensitive development sectors, include the Ministry of Energy, Ministry of Infrastructure and Equipment, Ministry of Transport, Ministry of Education, Ministry of Health, and Ministry of National Solidarity.

Summary of the current World Bank Portfolio of Cross-Sector Investments in Burundi & Other Development Partners' interventions related to Climate Resilience and Land Certification in Burundi is presented in the table below.

Sector	World Bank Project Name	Area Covered	Synergies with the proposed project
<p>Social Protection, Jobs and Inclusion</p>	<p><b>Cash for Jobs Project</b> (P175327, USD \$150M)</p> <p><i>Approval:</i> December 14, 2021</p> <p><i>Closing:</i> December 31, 2026</p> <p><i>PDO:</i> Strengthen management capacity, scale up safety net programs, and promote productive inclusion and access to jobs.</p> <p><b>Burundi Integrated Community Development Project</b> (P169315, USD \$ 60 M)</p> <p><i>Approval:</i> February 28, 2020</p> <p><i>Closing:</i> March 1, 2026</p> <p><i>PDO:</i> The Project Development Objective is to improve nutrition, access to basic services and economic opportunities in the targeted areas.</p> <p><b>Local Development for Jobs Project</b> (P155060, USD \$51M)</p> <p><i>Approval:</i> August 22, 2017</p> <p><i>Closing:</i> June 30, 2023</p> <p><i>PDO:</i> The project development objective is to create income generating opportunities for individuals and businesses and improve access to basic infrastructure in selected regions, targeting vulnerable populations and MSMEs in selected value chains.</p>	<p>All collines of the country except the 247 collines covered by the Pilot project</p>	<p>Building on Merakabandi I successes in 4 provinces, new project scales cash-for-work nation-wide to all collines in first 4 provinces, 6 additional provinces and 3 final provinces from Feb 2024. Provision of bi-monthly cash transfers (\$18/beneficiary every other month for 24months), targeting the poorest colline households. Beneficiaries also provided with accompanying measures for 12 more months providing productive inclusion and livelihood support to escape extreme poverty. Targeting 140,000 direct beneficiaries (household heads), or 1 million indirect beneficiaries (assuming 5 household members touched).</p> <p><u>Synergies with BCCRP:</u></p> <p>Led by MERAKABANDI II (\$150 M) Geographic co-location: Ensure cash transfers MERABANKI II are also delivered in BCCRP target collines; Support for climate-resilient productive inclusion at \$200/beneficiary (inclusion of climate modules in training &amp; technical assistance for entrepreneurship for alternative revenue-generating activities chosen by individual beneficiaries, with support of NGOs), BCCRP ensuring that beneficiary-selected activities are climate-resilient and inputs to Operations Manual on climate-resilient criteria. Support to response to climate-related shocks under COVID-19 support envelope. Coordination through the SEP/CNPS: Secretariat Exécutif de la Commission Nationale de Protection Sociale – interministerial platform, underpinned by national strategy on social protection (already approved), including establishment of climate-responsive social protection systems, national guidelines for cash-for-work and establishment of a unique national social registry. Joint client engagement and advocacy for climate resilience components integration into social protection programs.</p> <p>Led by BCCRP (\$100 M) Cash-for-work under BCCRP can touch other vulnerable populations (i.e. on waitlist under social registry) non benefitting from cash transfers, with community validation building on MERABANDI II social vulnerability registry.</p>

			<p>Building on Merakabandi II Digital payments to promote financial/digital inclusion: buy cell phones for BCCRP cash-for-work beneficiaries (%3.75 transaction cost), build on lessons from MERAKANDI on bank digital payments and expand operator digital payment system to BCCRP targeted cash for work beneficiaries, building on Merakabandi lessons on sustainability of project activities while avoid overlaps (avoid payment bunching during same target periods); Climate-responsive social protection strategy, a key component of Burundi’s Climate Act and under inter-ministerial climate coordination platform.</p> <p>Portfolio-level engagement (Turikumwe, Merakabandi II, BCCRP, mamans lumiere, land certification committees): ensuring same colline entry points and capacity strengthening of existing local committees (with adequate remuneration), for portfolio-wide engagement outlining clear add-value of each project and synergies across them for integrated local development (i.e. through the PCDCs).</p>
Governance and Digital Development	<p><b>Burundi Digital Foundations Project</b> (P176396; USD \$54 M)</p> <p><i>Approval:</i> June 22; 2022</p> <p><i>Closing:</i> August 30; 2027</p> <p><i>PDO:</i> To increase broadband internet access, especially to underserved communities, and improve government’s capacity to deliver public services digitally.</p>		<p>Investment Guide &gt; Risk Management Components</p> <p>PIMA (Green PIM)—climate-sensitive public investment system</p> <p>Support to feasibility studies &gt; climate risk identification and management</p> <p>Technical assistance and capacity building in integral climate risk management</p> <p>Update Burundi Emerging Country Plan 2030 and Burundi Developed Country Plan 2060 &gt; integration of NDC/NAP</p>
Health	<p><b>Health System Support Project (KIRA)</b> (P156012; USD \$108M)</p> <p><i>Approval:</i> February 24; 2017</p> <p><i>Closing:</i> Jun 30; 2023</p> <p><i>PDO:</i> To increase the use of quality Reproductive, Maternal, Neonatal, Child and Adolescent Health services, and, in the event of an Eligible Crisis or Emergency, to provide immediate and effective</p>	All collines of the country	<p>Micronutrient powder distribution to prevent malnutrition in climate worst affected provinces.</p> <p>Support for cholera outbreak management</p> <p>Promotion of the dietary change by using local products in areas where food insecurity is most an issue.</p> <p>Strengthen health systems to address all health issues especially diseases more linked to climate change (malaria, diarrhoea, respiratory diseases...) and to</p> <p>Enhance preparedness of the country to respond epidemics/pandemics.</p> <p>Promotion of FP, especially by using auto-injectable contraceptive (SAYANA PRESS) in provinces with high density of population</p>

	<p>response to said Eligible Crisis or Emergency</p> <p><b>Burundi COVID19 Preparedness and Response Project</b> (P173845; USD \$65 M)</p> <p><i>Approval:</i> April;10 2020</p> <p><i>Closing:</i> September;30 2024</p> <p><i>PDO:</i> To prevent, detect and respond to the threat posed by COVID-19 and strengthen national systems for public health preparedness in Burundi.</p> <p><b>Investing in Early Years and Fertility in Burundi</b> (NKURIZA) (P165253; USD \$30 M)</p> <p><i>Approval:</i> September;5 2019</p> <p><i>Closing:</i> June;30-2024</p> <p><i>PDO:</i> Increase the coverage of community-based nutrition interventions among women of reproductive age and children under two and to increase utilization of family planning services in targeted area</p>		<p>that put pressure on natural resources and accentuate the risks of climate deterioration.</p> <p>Biomedical waste management and destruction by building incinerators and training health</p>
Education	<p><b>Burundi skills for jobs: youth and Women Project</b> (P164416; USD \$ 82 M)</p> <p><i>Approval:</i> December 10; 2021</p> <p><i>Closing:</i> October 30; 2026</p> <p><i>PDO:</i> The project development objective (PDO) is to improve access and market relevance of supported skills development training and entrepreneurship opportunities for youth, particularly for women and refugees</p>	All collines of the country	<p>Strengthen and develop climate change content in university modules. Investing in online learning is a climate change adaptation activity because the installed capacity to deliver content through this format can be used also in the case of climate change-induced emergencies that make attendance physically impossible. The learning format will be designed to ensure continuity during climate related crises or events</p> <p>Support the Environment Department in developing modules on social and environmental safeguards in the academic field</p>

	<p><b>Burundi Early Grade Learning Project</b> (P161600; USD \$42 M)</p> <p><i>Approval:</i> September 28; 2018</p> <p><i>Closing:</i> September 15; 2023</p> <p><i>PDO:</i> The objective of the Project is to improve student learning and progression in early grades in Burundi and, in the event of an Eligible Crisis or</p> <p>Emergency, to provide immediate and effective response to said Eligible Crisis or Emergency.</p>		<p>Ambitious CCB target for the new human capital project in the pipeline, which will include a large component on school construction.</p>
Environment	<p><b>Burundi Landscape Restoration and Resilience Project</b> (P160613; USD \$30M) &amp;</p> <p><i>Approval:</i> April 11; 2018</p> <p><i>Closing:</i> March 31; 2024</p> <p><i>PDO:</i> The Project Development Objective is to restore land productivity in targeted degraded landscapes and, in the event of an eligible crisis or emergency, to provide immediate and effective response to said eligible crisis or emergency.</p> <p><b>GEF additional financing</b> (P 171745; USD \$6M)</p> <p><i>Approval:</i> May 13; 2021</p> <p><i>Closing:</i> March 31; 2024</p>	<p>BUJUMBURA RURAL</p> <p>KAYANZA</p> <p>MUYINGA</p> <p>KIBIRA &amp; RUVUBU national park.</p>	<p>Scaling up of the parent project's successes in landscape restoration, community climate resilience and land certification to wider set of <i>collines</i> nation-wide.</p>
Agriculture	<p><b>Great Lakes Regional Integrated Agriculture Development Project</b> (P161781; \$75 million)</p> <p><i>Approval:</i> November 15, 2017</p>	<p>CIBITOKÉ</p> <p>BUBANZA</p> <p>BUJUMBURA</p> <p>RUMONGE</p>	<p>Strengthen GoB's capacity to organize a donor meeting—mobilize more funds for climate smart agriculture (drought resistant crop varieties, improved agricultural value chain, etc.)</p>

	<p><i>Closing:</i> November 29, 2024</p> <p><i>PDO:</i> i) to increase agricultural productivity and commercialization in targeted areas in the territory of the recipient and improve agricultural regional integration; and (ii) to provide immediate and effective response in the event of an eligible crisis or emergency.</p>	<p>MAKAMBA</p> <p>CIBITOKÉ</p> <p>BUJUMBURA</p> <p>RUMONGE</p>	<p>Promote integrated watershed management for flood, drought, and landslide risk reduction.</p> <p>Engage GoB to help prepare new WB framed project (possibly using exciting OPS/and request PPA)</p>
Disaster Risk Management	<p><b>Burundi Urban Resilience Project</b> (P177146),</p> <p><i>under preparation</i></p>		<p>Through the CWES fund: diagnose and develop an investment plan for emergency preparedness and response, Identify how to improve the early warning system and hydrometeorological services. Use of cell phones distributed under the cash-for-work program for the local community's early warning system</p>
Transport	<p><b>Burundi Transport Resilience Project</b> (P172988, US \$ 120M)</p> <p><i>Approval:</i> September 30; 2022</p> <p><i>Closing:</i> December 31;2027</p> <p><i>PDO:</i> The Project Development Objectives (PDO) are to provide efficient, safe and climate resilient road connectivity along the main corridor linking Burundi with Tanzania, and to strengthen the institutional capacity to sustainably plan, develop, and preserve climate resilient road assets.</p>	<p>ROAD RN3.</p> <p>Bujumbura-Rumonge</p>	<p>Establishment a Climate Resilient Transportation System for the RN3 segment as well as social infrastructure using NBS to protect riverine communities from increasing climate (flood) risks</p>
Energy	<p><b>Burundi JiJi and Mulembwe Hydropower</b> (P133610; US\$ 100M)</p> <p><i>Approval:</i> April 22; 2014</p> <p><i>Closing:</i> December 31; 2023</p> <p><i>PDO:</i> The project development objective is to increase the supply of clean and low-cost hydropower electricity to Burundi's national grid.</p> <p><b>Solar Energy in Local Communities</b> (P164435; USD \$100 million)</p> <p><i>Approval:</i> February 28; 2020</p>	<p>Jiji-Mulembwe Catchment</p>	<p>Increasing renewable energy supply: 49.5 MW of clean, renewable, and affordable energy will be injected to Burundi National grid and increase the current installed capacity by 50%</p> <p>Expanding electricity access in rural areas: (a) Providing 400 schools and 300,000 households with clean/Improved cookstoves; (b) Expanding electricity to 100,000 households, enterprises, schools, and health centers in rural areas of Burundi</p>

	<p>Closing: March 1; 2026</p> <p><b>PDO:</b> The Project Development Objective (PDO) is to expand access to energy services for households, enterprises, schools and health centers in rural areas of Burundi.</p> <p><b>AFR RI-Regional Rusumo Falls Hydroelectric Project (P075941; USD \$352M)</b></p> <p>Approval: August 6; 2013</p> <p>Closing: June 30; 2024</p> <p><b>PDO:</b> The development objective of the RRFPP is to increase the supply of electricity to the national grids of Rwanda, Tanzania, and Burundi.</p>	Nation-wide	
Finance, Competitiveness and Innovation	<p><b>Great Lakes Trade Facilitation and Integration Project (P178814; USD \$90million)</b></p> <p>Approval: December 2; 2022</p> <p>Closing: June 30; 2028</p> <p><b>PDO:</b> The development objective of the project is to facilitate trade and enhance the commercialization of selected value chains primarily targeting small scale and women traders in the borderlands of the Great Lakes Region.</p>	RUMONGE	<p>Creation and strengthening of value chains by creating business models</p> <p>Support the activities of entrepreneurs and start-ups through training in climate-smart agriculture to build their technical capacity to access FIGA grant.</p> <p>Improve the local community's ability to access sustainable green energy by developing a market-driven value chain.</p>

## Core Indicators

Explain the methodological approach and underlying logic to justify target levels for Core and Sub-Indicators (max. 250 words, approximately 1/2 page)

## META INFORMATION – LDCF

LDCF true	SCCF-B (Window B) on technology transfer <b>false</b>	SCCF-A (Window-A) on climate Change adaptation <b>false</b>
Is this project LDCF SCCF challenge program? <b>false</b>		



This Project involves at least one small island developing State(SIDS).

**false**

This Project involves at least one fragile and conflict affected state.

**true**

This Project will provide direct adaptation benefits to the private sector.

**false**

This Project is explicitly related to the formulation and/or implementation of national adaptation plans (NAPs).

**false**

This project will collaborate with activities begin supported by other adaptation funds. If yes, please select below

Green Climate Fund	Adaptation Fund	Pilot Program for Climate Resilience (PPCR)
<b>false</b>	<b>false</b>	<b>false</b>

This Project has an urban focus.

**false**

This project will directly engage local communities in project design and implementation

**true**

This project will support South-South knowledge exchange

**false**

This Project covers the following sector(s)[the total should be 100%]: \*

Agriculture	10.00%
Nature-based management	40.00%
Climate information services	25.00%
Coastal zone management	0.00%
Water resources management	0.00%
Disaster risk management	25.00%
Other infrastructure	0.00%
Tourism	0.00%
Health	0.00%
Other (Please specify comments)	0.00%
Total	100.00%

This Project targets the following Climate change Exacerbated/introduced challenges:\*

Sea level rise	Change in mean temperature	Increased climatic variability	Natural hazards
<b>false</b>	<b>true</b>	<b>true</b>	<b>false</b>
Land degradation	Coastal and/or Coral reef degradation	Groundwater quality/quantity	
<b>true</b>	<b>false</b>	<b>false</b>	

## CORE INDICATORS – LDCF

	Total	Male	Female	% for Women
CORE INDICATOR 1 Total number of direct beneficiaries	250,000	125,000.00	125,000.00	50.00%
CORE INDICATOR 2 (a) Area of land managed for climate resilience (ha)	203,000.00			

(b) Coastal and marine area managed for climate resilience (ha)	0.00			
CORE INDICATOR 3 Number of policies/plans/ frameworks/institutions for to strengthen climate adaptation	5.00			
CORE INDICATOR 4 Number of people trained or with awareness raised	19,097	7,639.00	11,458.00	60.00%
CORE INDICATOR 5 Number of private sector enterprises engaged in climate change adaptation and resilience action	0.00			

#### A. ALIGNMENT WITH GEF-8 PROGRAMMING STRATEGIES AND COUNTRY/REGIONAL PRIORITIES

Describe how the proposed interventions are aligned with GEF- 8 programming strategies and country and regional priorities, including how these country strategies and plans relate to the multilateral environmental agreements.

Confirm if any country policies that might contradict with intended outcomes of the project have been identified, and how the project will address this.

For projects aiming to generate biodiversity benefits (regardless of what the source of the resources is - i.e., BD, CC or LD), please identify which of the 23 targets of the Kunming-Montreal Global Biodiversity Framework the project contributes to and explain how. (max. 500 words, approximately 1 page)

**The project is well aligned with the GEF-8 programming strategies for LDCF/SCCF. Through focusing on creating an enabling environment for climate resilience, the project will improve policy, regulations, administrative procedures, and institutional capacity.** The project will contribute to the implementation of the GEF Programming Strategic on Adaptation to Climate Change for the LDCF 2022-2026 priority area 1: Scaling Up Finance & Priority Area 3: Fostering Partnership for Inclusion and Whole-of-Society Approach 1. Reduce Vulnerability and Increase Resilience through Innovation and Technology Transfer for Climate Change Adaptation and Objective 2. Mainstream Climate Change Adaptation and Resilience for Systemic Impact of the GEF Programming Strategic on Adaptation to Climate Change for the LDCF 2018-2022. In alignment with Objective 1 the project will support a whole-of-society climate and land governance approach and cross-sector collaboration among key stakeholders. This will be achieved through country-level technical assistance and capacity building, and a focus on creating an enabling environment for climate resilience through improved policy. The project will additionally contribute to the priority area 1 on enhancing Nature-based solutions. (NBS), by contributing to sustainable land management at the watershed level through NBS, integrated and community centered approaches.

#### B. POLICY REQUIREMENTS

##### Gender Equality and Women's Empowerment:

We confirm that gender dimensions relevant to the project have been addressed as per GEF Policy and are clearly articulated in the Project Description (Section B).

Yes

##### Stakeholder Engagement

We confirm that key stakeholders were consulted during PIF development as required per GEF policy, their relevant roles to project outcomes and plan to develop a Stakeholder Engagement Plan before CEO endorsement has been clearly articulated in the Project Description (Section B).

Yes

**Were the following stakeholders consulted during project identification phase:**

Indigenous Peoples and Local Communities: Yes

Civil Society Organizations: Yes

Private Sector: Yes

**Provide a brief summary and list of names and dates of consultations**

The project team had engaged with the government of Burundi, in particular with the Ministry of Environment, Agriculture and Livestock of Burundi (MINEAGRIE). additional stakeholder consultations will be conducted during project preparation. Details on stakeholder engagement also available in the project document.

Cross-sectoral coordination and stakeholder engagement is central to meeting the objectives of this project. The task team will engage stakeholders including national government agencies, local governments, civil society, academia, businesses, farmer cooperatives, schools, and households, including socially marginalized and disadvantaged groups. Stakeholder engagement will be especially central to the work of integrated nature-based solutions into the design of infrastructure such as roads, hydropower plants, schools, and health facilities, to ensure that the proposed activities are appropriate for the local context and to build local ownership.

- Dates of stakeholder consultations that have already taken place:

From 22 to 24 February 2023: Government retreat to draw up selection criteria for identifying the project's target areas and roadmap for the project.

September 12, 2023: (i) briefing with Minister Sanctus and WB Country Manager; (ii) consultation meeting with Technical Committee on (iii) identification of key elements to be included in project document, (iv) development of detailed timetable for formulation of project document; (v) identification of project target sites, (vi) Institutional Arrangement.

September 13, 2023: (i) orientation meeting with SHER and the technical committee on the conduct of feasibility studies on the prototype hills that will guide the detailed feasibility studies;(ii) consultation meeting with the FAO and the project preparation unit on the methodology for implementing farmer field schools at community and local government level;(iii) technical meeting with the governance PM and the technical committee on the analysis of institutional capacities.

14 September 14, 2023 (i) Technical meeting on land certification with IGNFI-LADEC, OIM, CADASTRE NATIONAL, DIRECTION GENERALE DE LA GESTION DU POITRIMOINE FONCIER, MEDIA-BOX and the project preparation unit;(ii) Technical working meeting on fiduciary management;(iii) Technical working meeting on the preparation of environmental and social safeguard instruments.

September 15, 2023(i) Debriefing with the country manager and the Minister, (ii) Field trip and visit to the prototype hills around the JIJI and Mulembwe hydroelectric schemes.

September 16, 2023(i) Finalization of the aide-memoire with the technical committee

From 5 to 17 November 2023 community consultation in the prototype hills in the communes of (i) SONGA a JIJI-MULEMBWE in the province of MATANA;(ii) Buhinyuza in the province of MUYINGA

From 20 to 25 November 2023 pre-assessment mission of the key elements for drawing up the project document.

(Please upload to the portal documents tab any stakeholder engagement plan or assessments that have been done during the PIF development phase.)

## Private Sector

Will there be private sector engagement in the project?

Yes

And if so, has its role been described and justified in the section B project description?

Yes

## Environmental and Social Safeguard (ESS) Risks

We confirm that we have provided indicative information regarding Environmental and Social risks associated with the proposed project or program and any measures to address such risks and impacts (this information should be presented in Annex D).

Yes

## Overall Project/Program Risk Classification

PIF	CEO Endorsement/Approval	MTR	TE
High or Substantial			

## C. OTHER REQUIREMENTS

### Knowledge management

We confirm that an approach to Knowledge Management and Learning has been clearly described in the Project Description (Section B)

Yes

## ANNEX A: FINANCING TABLES

### GEF Financing Table

Indicative Trust Fund Resources Requested by Agency(ies), Country(ies), Focal Area and the Programming of Funds

GEF Agency	Trust Fund	Country/ Regional/ Global	Focal Area	Programming of Funds	Grant / Non-Grant	GEF Project Grant(\$)	Agency Fee(\$)	Total GEF Financing (\$)
World Bank	LDCF	Burundi	Climate Change	LDCF Country allocation	Grant	18,348,624.00	1,651,376.00	20,000,000.00
<b>Total GEF Resources (\$)</b>						<b>18,348,624.00</b>	<b>1,651,376.00</b>	<b>20,000,000.00</b>

## Project Preparation Grant (PPG)

Is Project Preparation Grant requested?

false

PPG Amount (\$)

PPG Agency Fee (\$)

GEF Agency	Trust Fund	Country/ Regional/ Global	Focal Area	Programming of Funds	Grant / Non-Grant	PPG(\$)	Agency Fee(\$)	Total PPG Funding(\$)
<b>Total PPG Amount</b>						<b>0.00</b>	<b>0.00</b>	<b>0.00</b>

Please provide justification

## Sources of Funds for Country Star Allocation

GEF Agency	Trust Fund	Country/ Regional/ Global	Focal Area	Sources of Funds	Total(\$)
<b>Total GEF Resources</b>					<b>0.00</b>

## Indicative Focal Area Elements

Programming Directions	Trust Fund	GEF Project Financing(\$)	Co-financing(\$)
CCA-1-1	LDCF	18,348,624.00	100000000
<b>Total Project Cost</b>		<b>18,348,624.00</b>	<b>100,000,000.00</b>

## Indicative Co-financing

Sources of Co-financing	Name of Co-financier	Type of Co-financing	Investment Mobilized	Amount(\$)
GEF Agency	World Bank	Grant	Investment mobilized	100000000
<b>Total Co-financing</b>				<b>100,000,000.00</b>

Describe how any "Investment Mobilized" was identified

The GEF financing will be fully integrated with the World Bank IDA "Burundi Climate Resilience Project (P180864). The IDA grant to Burundi of \$100 million will support the Government of Burundi to strengthen its capacity to anticipate, monitor, and act on intensifying climate change and land degradation risks while enhancing livelihood opportunities for vulnerable people.

## ANNEX B: ENDORSEMENTS

### GEF Agency(ies) Certification

GEF Agency Type	Name	Date	Project Contact Person	Phone	Email
GEF Agency Coordinator	Angela Armstrong	10/10/2023	Arame Tall		aarmstrong@worldbank.org

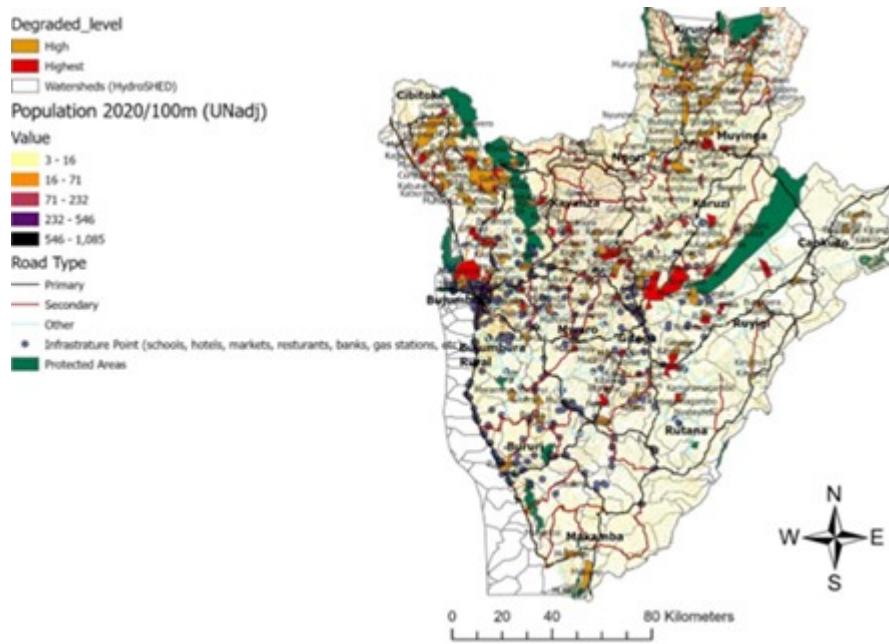
### Record of Endorsement of GEF Operational Focal Point (s) on Behalf of the Government(s):

Name	Position	Ministry	Date (MM/DD/YYYY)
Dodiko Prosper	Permanent Secretary	Ministry of Environment, Agriculture and Livestock	8/22/2023

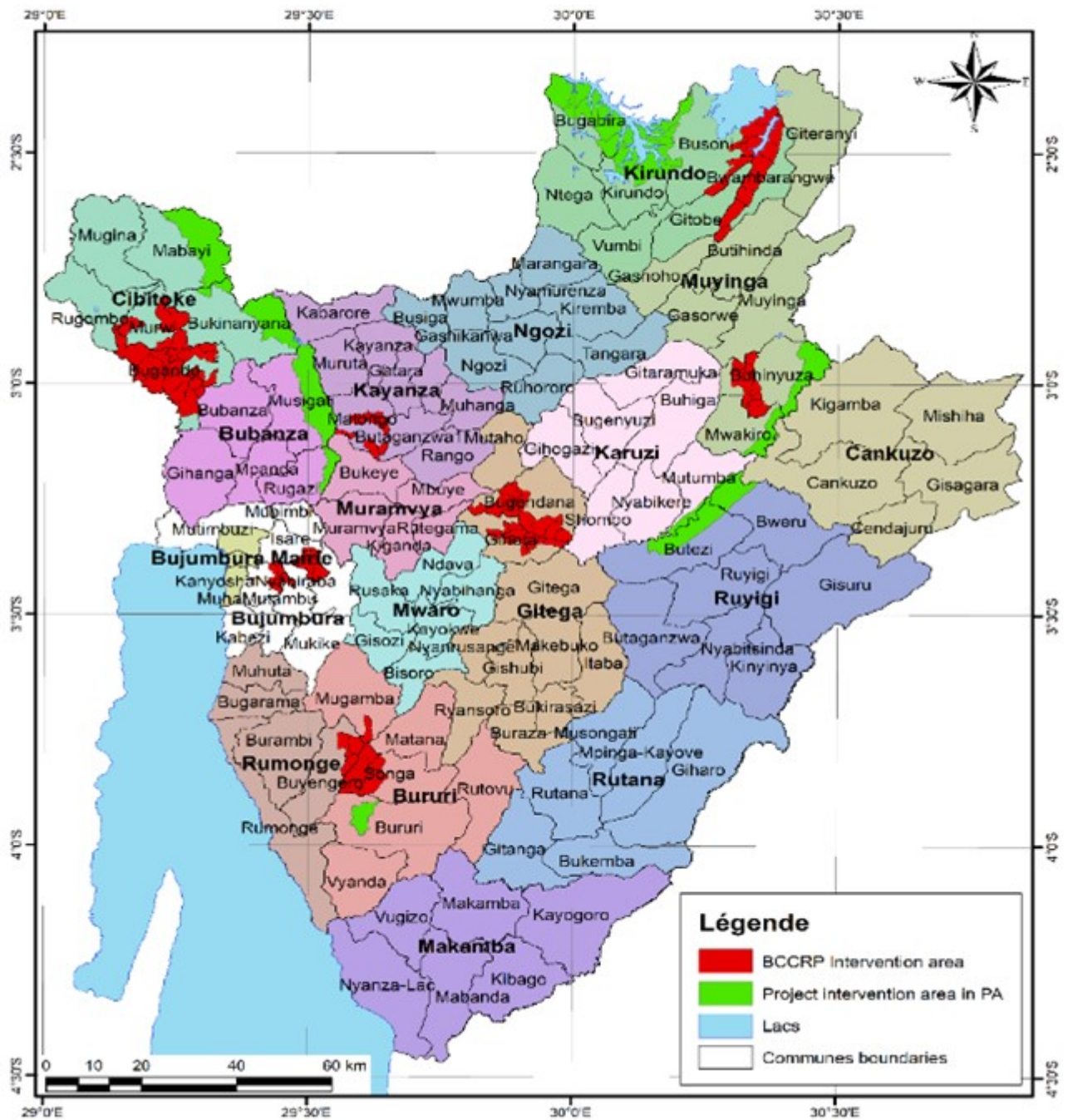
## ANNEX C: PROJECT LOCATION

Please provide geo-referenced information and map where the project interventions will take place

### Figure A 2.1. Prioritized multi-hotspot locations to be considered for implementing this project



**Figure A 2.2: Map of potential target sites for the BCRP (to be confirmed during feasibility phase)<sup>4</sup> Source: IBEBU with World Bank task team**



**ANNEX D: ENVIRONMENTAL AND SOCIAL SAFEGUARDS SCREEN AND RATING**

(PIF level) Attach agency safeguard screen form including rating of risk types and overall risk rating.

Title

C-ESRS Burundi Climate Resilience Project



ANNEX E: RIO MARKERS

Climate Change Mitigation	Climate Change Adaptation	Biodiversity	Land Degradation
No Contribution 0	Principal Objective 2	Significant Objective 1	Significant Objective 1

ANNEX F: TAXONOMY WORKSHEET

Level 1	Level 2	Level 3
<input checked="" type="checkbox"/> Influencing models	<input type="checkbox"/> Transform policy and regulatory environments <input checked="" type="checkbox"/> Strengthen institutional capacity and decision-making	
	<input type="checkbox"/> Convene multi-stakeholder alliances <input type="checkbox"/> Demonstrate innovative approaches <input type="checkbox"/> Deploy innovative financial instruments	
<input checked="" type="checkbox"/> Stakeholders	<input type="checkbox"/> Indigenous Peoples <input checked="" type="checkbox"/> Private Sector	<input type="checkbox"/> Capital providers <input type="checkbox"/> Financial intermediaries and market facilitators <input type="checkbox"/> Large corporations <input type="checkbox"/> SMEs <input type="checkbox"/> Individuals/Entrepreneurs <input type="checkbox"/> Non-Grant Pilot <input type="checkbox"/> Project Reflow
	<input checked="" type="checkbox"/> Beneficiaries <input checked="" type="checkbox"/> Local Communities <input type="checkbox"/> Civil Society	<input type="checkbox"/> Community Based Organization <input type="checkbox"/> Non-Governmental Organization <input type="checkbox"/> Academia <input type="checkbox"/> Trade Unions and Workers Unions
	<input checked="" type="checkbox"/> Type of Engagement	<input type="checkbox"/> Information Dissemination <input type="checkbox"/> Partnership <input checked="" type="checkbox"/> Consultation <input checked="" type="checkbox"/> Participation
	<input type="checkbox"/> Communications	<input type="checkbox"/> Awareness Raising <input type="checkbox"/> Education <input type="checkbox"/> Public Campaigns <input type="checkbox"/> Behavior Change
<input checked="" type="checkbox"/> Capacity, Knowledge and Research	<input type="checkbox"/> Enabling Activities <input checked="" type="checkbox"/> Capacity Development <input checked="" type="checkbox"/> Knowledge Generation and Exchange <input type="checkbox"/> Targeted Research <input type="checkbox"/> Learning	<input type="checkbox"/> Theory of Change <input type="checkbox"/> Adaptive Management <input type="checkbox"/> Indicators to Measure Change
	<input type="checkbox"/> Innovation <input type="checkbox"/> Knowledge and Learning	<input type="checkbox"/> Knowledge Management <input type="checkbox"/> Innovation <input type="checkbox"/> Capacity Development <input type="checkbox"/> Learning
	<input checked="" type="checkbox"/> Stakeholder Engagement Plan	
<input checked="" type="checkbox"/> Gender Equality	<input checked="" type="checkbox"/> Gender Mainstreaming	<input type="checkbox"/> Beneficiaries <input type="checkbox"/> Women groups <input checked="" type="checkbox"/> Sex-disaggregated indicators <input type="checkbox"/> Gender-sensitive indicators
	<input type="checkbox"/> Gender results areas	<input type="checkbox"/> Access and control over natural resources <input type="checkbox"/> Participation and leadership <input type="checkbox"/> Access to benefits and services <input type="checkbox"/> Capacity development <input type="checkbox"/> Awareness raising <input type="checkbox"/> Knowledge generation
<input checked="" type="checkbox"/> Focal Areas/Theme		<input type="checkbox"/> Drylands
<input checked="" type="checkbox"/> Land Degradation	<input checked="" type="checkbox"/> Sustainable Land Management	<input type="checkbox"/> Restoration and Rehabilitation of Degraded Lands <input type="checkbox"/> Ecosystem Approach <input type="checkbox"/> Integrated and Cross-sectoral approach <input type="checkbox"/> Community-Based NRM <input checked="" type="checkbox"/> Sustainable Livelihoods <input type="checkbox"/> Income Generating Activities <input type="checkbox"/> Sustainable Agriculture <input type="checkbox"/> Sustainable Pasture Management <input type="checkbox"/> Sustainable Forest/Woodland Management <input type="checkbox"/> Improved Soil and Water Management Techniques <input type="checkbox"/> Sustainable Fire Management <input type="checkbox"/> Drought Mitigation/Early Warning
	<input type="checkbox"/> Land Degradation Neutrality	<input type="checkbox"/> Land Productivity <input type="checkbox"/> Land Cover and Land cover change <input type="checkbox"/> Carbon stocks above or below ground

<input checked="" type="checkbox"/> Climate Change	<input checked="" type="checkbox"/> Climate Change Adaptation	<input type="checkbox"/> Climate Finance <input checked="" type="checkbox"/> Least Developed Countries <input type="checkbox"/> Small Island Developing States <input type="checkbox"/> Disaster Risk Management <input type="checkbox"/> Sea-level rise <input checked="" type="checkbox"/> Climate Resilience <input type="checkbox"/> Climate Information <input type="checkbox"/> Ecosystem-based Adaptation <input type="checkbox"/> Adaptation Tech Transfer <input type="checkbox"/> National Adaptation Programme of Action <input type="checkbox"/> National Adaptation Plan <input type="checkbox"/> Mainstreaming Adaptation <input type="checkbox"/> Private Sector <input type="checkbox"/> Innovation <input type="checkbox"/> Complementarity <input checked="" type="checkbox"/> Community-based Adaptation <input checked="" type="checkbox"/> Livelihoods
--	---	---