

# GEF-8 WORLD BANK PCN STAGE/GEF DATA SHEET

## TABLE OF CONTENTS

<b>GENERAL PROJECT INFORMATION .....</b>	<b>3</b>
Project Summary .....	4
Indicative Project Overview .....	5
Coordination and Cooperation with Ongoing Initiatives and Project .....	7
Core Indicators .....	7
<b>A. ALIGNMENT WITH GEF-8 PROGRAMMING STRATEGIES AND COUNTRY/REGIONAL PRIORITIES.....</b>	<b>10</b>
<b>B. POLICY REQUIREMENTS .....</b>	<b>11</b>
Gender Equality and Women’s Empowerment:.....	11
Stakeholder Engagement .....	11
Private Sector .....	12
Environmental and Social Safeguard (ESS) Risks .....	12
<b>C. OTHER REQUIREMENTS .....</b>	<b>12</b>
Knowledge management .....	12
<b>ANNEX A: FINANCING TABLES .....</b>	<b>13</b>
GEF Financing Table .....	13
Project Preparation Grant (PPG) .....	13
Sources of Funds for Country Star Allocation.....	13
Indicative Focal Area Elements .....	14
Indicative Co-financing .....	14
<b>ANNEX B: ENDORSEMENTS .....</b>	<b>14</b>
GEF Agency(ies) Certification .....	14
Record of Endorsement of GEF Operational Focal Point (s) on Behalf of the Government(s):.....	15
<b>ANNEX C: PROJECT LOCATION .....</b>	<b>15</b>
<b>ANNEX D: ENVIRONMENTAL AND SOCIAL SAFEGUARDS SCREEN AND RATING .....</b>	<b>18</b>
<b>ANNEX E: RIO MARKERS.....</b>	<b>18</b>
<b>ANNEX F: TAXONOMY WORKSHEET .....</b>	<b>18</b>

## General Project Information

### Project Title

Community-based Wildfire Risk Management in Lebanon's Vulnerable Landscapes

### Region

Lebanon

### GEF Project ID

11117

### Country(ies)

Lebanon

### Type of Project

FSP

### GEF Agency(ies):

World Bank

### GEF Agency ID

### Executing Partner

Ministry of Environment

### Executing Partner Type

Government

### GEF Focal Area (s)

Multi Focal Area

### Submission Date

4/11/2023

### Project Sector (CCM Only)

AFOLU

### Taxonomy

Focal Areas, Climate Change, Climate Change Mitigation, Agriculture, Forestry, and Other Land Use, Forest, Forest and Landscape Restoration, Land Degradation, Sustainable Land Management, Community-Based Natural Resource Management, Sustainable Forest, Ecosystem Approach, Restoration and Rehabilitation of Degraded Lands, Sustainable Fire Management, Land Degradation Neutrality, Biodiversity, Protected Areas and Landscapes, Terrestrial Protected Areas, Influencing models, Strengthen institutional capacity and decision-making, Stakeholders, Local Communities, Type of Engagement, Consultation, Participation, Partnership, Information Dissemination, Communications, Awareness Raising, Civil Society, Non-Governmental Organization, Community Based Organization, Academia, Private Sector, Gender Equality, Knowledge Generation and Exchange, Gender results areas, Gender Mainstreaming, Beneficiaries, Gender-sensitive indicators, Sex-disaggregated indicators, Capacity Development, Capacity, Knowledge and Research, Knowledge Generation, Professional Development

### Type of Trust Fund

GET

### Project Duration (Months)

60

### GEF Project Grant: (a)

3,458,000.00

### GEF Project Non-Grant: (b)

0.00

### Agency Fee(s) Grant: (c)

328,510.00

### Agency Fee(s) Non-Grant (d)

0.00

### Total GEF Financing: (a+b+c+d)

3,786,510.00

### Total Co-financing

126,000,000.00

### PPG Amount: (e)

### PPG Agency Fee(s): (f)

0.00	0.00
PPG total amount: (e+f)	Total GEF Resources: (a+b+c+d+e+f)
0.00	3,786,510.00

#### Project Tags

CBIT: No NGI: No SGP: No Innovation: No

#### Project Summary

Provide a brief summary description of the project, including: (i) what is the problem and issues to be addressed? (ii) what are the project objectives, and if the project is intended to be transformative, how will this be achieved? (iii), how will this be achieved (approach to deliver on objectives), and (iv) what are the GEBs and/or adaptation benefits, and other key expected results. The purpose of the summary is to provide a short, coherent summary for readers. The explanation and justification of the project should be in section B "project description". (max. 250 words, approximately 1/2 page)

Lebanon is an important part of the Mediterranean Biodiversity Hotspot, which is the second largest hotspot in the world and the largest of the five Mediterranean-climate regions. However, Lebanon has been losing an average of 158 hectares of forest cover per year since 2000. Reports of massive forest fires during the period 2019-2021 resulted in the loss of trees and forest biodiversity but also loss of human lives and properties – mainly due to the lack of (i) a coordinated response, resources to fight fires (incl. equipment and technology), (ii) preparedness and skills of the local government and local communities, (iii) inadequate integration of wild fire risk management with sustainable forest management, (iv) poor law enforcement and insufficient resources for civil defense, and (v) low public awareness on the causes and impacts of wild fires. This is of concern to because Lebanon's forests contain 2 million metric tons of carbon in living forest biomass and globally important biodiversity .

To address this issue, the proposed project will reduce wildfire risks in selected fire hotspots in Lebanon by improving sustainable forest landscape management. The project location will coincide with 2-3 of the identified 14 wildfire hotspots in Lebanon (i.e. Akkar, Minieh-DInniyeh, Aley-Shouf – incl. areas from Metn-Baabda). The project would be designed to increase the forest area under sustainable community-based management while enhancing the responsiveness of forest guards and early responders to wildfire risks and actual fire occurrences. At the same time, the project would improve the enabling environment for supporting wildfire risk management investments, by addressing solutions to regulatory constraints and by providing gender-sensitive technical assistance to relevant stakeholder groups with a view to improve women and youth empowerment. Capacity building activities would be tailored to the roles and responsibilities of various stakeholder groups in collaboration with universities and non-governmental groups. A forest fire "academy" (or a continuous education course) would be created and hosted by a consortium of a university and selected NGOs with courses offered on a regular basis. Given the ongoing political volatility, the project will take a bottom-up approach, involving local governments and communities. The project will not only reduce wildfire risks but also enhance people's livelihoods and create job opportunities while delivering global environmental benefits such as carbon sequestration, ecosystem resilience, biodiversity conservation, and forest landscape restoration.

The project would contribute to the implementation of Lebanon's National Forest Plan (NFP) 2015-2025 and the updated National Forest Fire Management Strategy (2023), which are the main forestry policy instruments currently being used by the Ministry of Agriculture, the Ministry of Environment and the Disaster Risk management Unit. Additionally, the project is consistent with the World Bank Group's Roadmap for Climate Action in the Middle East and North Africa and the World Bank Country Partnership Framework for Lebanon.

## Indicative Project Overview

### Project Objective

To reduce wildfire risks by improving sustainable forest landscape management in selected fire hotspots in Lebanon.

### Project Components

#### Support for an enabling environment for SFM and wildfire management

Component Type	Trust Fund
Technical Assistance	GET
GEF Project Financing (\$)	Co-financing (\$)
1,112,000.00	19,065,000.00

Outcome:

- Increased awareness and institutional capacity on of relevant MoE and MoA regional directorates in support of fire risk management at the regional/local level;
- Efficient and institutionalized communication on wildfire risks, events and post-fire activities at national, district and municipal levels;
- Strengthened relationship between local civil defense centers and first responder teams in hotspot areas.
- Gender responsive capacity developed on various topics related to forest management and fire risk management
- Increased awareness in communities ahead of each fire season with focus on fire hotspots.

Output:

- Coordination mechanism to enhance cooperation between MoE, MoA and the DRM Unit on an integrated wildfire risk management;
- Communication system for surveillance, alert, early detection and early response to wildfires;
- Trained first responders and local civil defense centers; trained forest guards on forensic forest fire investigation;
- Forest fire academy in collaboration with universities and non-governmental groups;
- Agreed guidelines for developing operational forest management plans with forest fire management considerations integrated;
- National forest fire emergency fund as an institutionalized system;
- Studies on readiness and engaging in the voluntary carbon market and certification; socio-economic potential for wood production and value addition in Lebanon (i.e., pine) and value addition for non-wood products (i.e., medicinal plants, honey, mushrooms);

#### Investments in improved forest and fire management

Component Type	Trust Fund
Investment	GET
GEF Project Financing (\$)	Co-financing (\$)
2,007,900.00	95,330,000.00

Outcome:

- Increased capacity of forest guards, first responders and municipalities to manage forest fires;
- Communities and municipalities enabled to implement operational management plans that integrate fire risk considerations;
- Reduced forest fire events;
- Communities with increased income from SFM

Output:

- Training program on forest fire management for first responders and local communities in forest fire hotspots;
- Forest guards, first responders and municipalities (civil defense centers) equipped with tools, materials and technology for surveillance, early detection and early intervention in hotspot areas;
- Gender responsive operational forest fire management plans in “hotspot” zones;
- Community-based forest management to reduce fire risk (including support for nature reserve committees and their teams to be trained and equipped to address fire risks in nature reserves);
- Forest landscapes in selected hotspots restored post burning events (i.e. following guidelines for post-fire restoration and rehabilitations, restoration/rehabilitation/stabilization activities, fire risk reduction measures).

## M&E

Component Type	Trust Fund
Technical Assistance	GET
GEF Project Financing (\$)	Co-financing (\$)
177,100.00	5,720,000.00

Outcome:

- Increased knowledge on various topics relevant to managing forest fires in the context of SFM;
- Increased collaboration with other countries facing similar challenges;
- Increased access to international good practices on managing forest fires

Output:

- Good practice notes e.g. on fire risk management (full cycle: prevention, addressing fire events, post-fire activities);
- Knowledge exchange events e.g. on forensic fire investigation;
- South-South visits to other Mediterranean countries with similar challenges (e.g. Algeria, Spain, Greece)

## Component Balances

Project Components	GEF Project Financing (\$)	Co-financing (\$)
--------------------	----------------------------	-------------------

Support for an enabling environment for SFM and wildfire management	1,112,000.00	19,065,000.00
Investments in improved forest and fire management	2,007,900.00	95,330,000.00
M&E	177,100.00	5,720,000.00
<b>Subtotal</b>	<b>3,297,000.00</b>	<b>120,115,000.00</b>
Project Management Cost	161,000.00	5,885,000.00
<b>Total Project Cost (\$)</b>	<b>3,458,000.00</b>	<b>126,000,000.00</b>

Please provide justification

## Coordination and Cooperation with Ongoing Initiatives and Project

Does the GEF Agency expect to play an execution role on this project?

If so, please describe that role here. Also, please add a short explanation to describe cooperation with ongoing initiatives and projects, including potential for co-location and/or sharing of expertise/staffing

## Core Indicators

### Indicator 3 Area of land and ecosystems under restoration

Ha (Expected at PIF)	Ha (Expected at CEO Endorsement)	Ha (Achieved at MTR)	Ha (Achieved at TE)
10000	0	0	0

### Indicator 3.1 Area of degraded agricultural lands under restoration

Disaggregation Type	Ha (Expected at PIF)	Ha (Expected at CEO Endorsement)	Ha (Achieved at MTR)	Ha (Achieved at TE)

### Indicator 3.2 Area of forest and forest land under restoration

Ha (Expected at PIF)	Ha (Expected at CEO Endorsement)	Ha (Achieved at MTR)	Ha (Achieved at TE)
10,000.00			

### Indicator 3.3 Area of natural grass and woodland under restoration

Disaggregation Type	Ha (Expected at PIF)	Ha (Expected at CEO Endorsement)	Ha (Achieved at MTR)	Ha (Achieved at TE)

### Indicator 3.4 Area of wetlands (including estuaries, mangroves) under restoration

Ha (Expected at PIF)	Ha (Expected at CEO Endorsement)	Ha (Achieved at MTR)	Ha (Achieved at TE)

**Indicator 4 Area of landscapes under improved practices (hectares; excluding protected areas)**

Ha (Expected at PIF)	Ha (Expected at CEO Endorsement)	Ha (Achieved at MTR)	Ha (Achieved at TE)
12638	0	0	0

**Indicator 4.1 Area of landscapes under improved management to benefit biodiversity (hectares, qualitative assessment, non-certified)**

Ha (Expected at PIF)	Ha (Expected at CEO Endorsement)	Ha (Achieved at MTR)	Ha (Achieved at TE)
12,638.00			

**Indicator 4.2 Area of landscapes under third-party certification incorporating biodiversity considerations**

Ha (Expected at PIF)	Ha (Expected at CEO Endorsement)	Ha (Achieved at MTR)	Ha (Achieved at TE)

**Type/Name of Third Party Certification**

**Indicator 4.3 Area of landscapes under sustainable land management in production systems**

Ha (Expected at PIF)	Ha (Expected at CEO Endorsement)	Ha (Achieved at MTR)	Ha (Achieved at TE)

**Indicator 4.4 Area of High Conservation Value or other forest loss avoided**

Disaggregation Type	Ha (Expected at PIF)	Ha (Expected at CEO Endorsement)	Ha (Achieved at MTR)	Ha (Achieved at TE)

**Indicator 4.5 Terrestrial OECMs supported**

Name of the OECMs	WDPA-ID	Total Ha (Expected at PIF)	Total Ha (Expected at CEO Endorsement)	Total Ha (Achieved at MTR)	Total Ha (Achieved at TE)

**Documents (Document(s) that justifies the HCVF)**

Title

**Indicator 6 Greenhouse Gas Emissions Mitigated**

Total Target Benefit	(At PIF)	(At CEO Endorsement)	(Achieved at MTR)	(Achieved at TE)
<b>Expected metric tons of CO<sub>2</sub>e (direct)</b>	0	0	0	0
<b>Expected metric tons of CO<sub>2</sub>e (indirect)</b>	5880860	0	0	0

**Indicator 6.1 Carbon Sequestered or Emissions Avoided in the AFOLU (Agriculture, Forestry and Other Land Use) sector**

Total Target Benefit	(At PIF)	(At CEO Endorsement)	(Achieved at MTR)	(Achieved at TE)



<b>Expected metric tons of CO<sub>2</sub>e (direct)</b>				
<b>Expected metric tons of CO<sub>2</sub>e (indirect)</b>	5,880,860			
<b>Anticipated start year of accounting</b>	2025			
<b>Duration of accounting</b>	20			

#### Indicator 6.2 Emissions Avoided Outside AFOLU (Agriculture, Forestry and Other Land Use) Sector

Total Target Benefit	(At PIF)	(At CEO Endorsement)	(Achieved at MTR)	(Achieved at TE)
<b>Expected metric tons of CO<sub>2</sub>e (direct)</b>				
<b>Expected metric tons of CO<sub>2</sub>e (indirect)</b>				
<b>Anticipated start year of accounting</b>				
<b>Duration of accounting</b>				

#### Indicator 6.3 Energy Saved (Use this sub-indicator in addition to the sub-indicator 6.2 if applicable)

Total Target Benefit	Energy (MJ) (At PIF)	Energy (MJ) (At CEO Endorsement)	Energy (MJ) (Achieved at MTR)	Energy (MJ) (Achieved at TE)
<b>Target Energy Saved (MJ)</b>				

#### Indicator 6.4 Increase in Installed Renewable Energy Capacity per Technology (Use this sub-indicator in addition to the sub-indicator 6.2 if applicable)

Technology	Capacity (MW) (Expected at PIF)	Capacity (MW) (Expected at CEO Endorsement)	Capacity (MW) (Achieved at MTR)	Capacity (MW) (Achieved at TE)

#### Indicator 11 People benefiting from GEF-financed investments

	Number (Expected at PIF)	Number (Expected at CEO Endorsement)	Number (Achieved at MTR)	Number (Achieved at TE)
<b>Female</b>	15,000			
<b>Male</b>	15,000			
<b>Total</b>	<b>30,000</b>	<b>0</b>	<b>0</b>	<b>0</b>

Explain the methodological approach and underlying logic to justify target levels for Core and Sub-Indicators (max. 250 words, approximately 1/2 page)

- The Government of Lebanon has identified 14 fire hotspots\* of which 3 potential high-priority hotspots have been identified (Akkar, Minieh-Dinniye, Aley-Shouf – incl. areas from Metn-Baabda). The preliminary target numbers for indicators 3 and 4 are based on the detailed information available for each hotspot.
- The GHG target is estimated using the FAO ExACT tool.

\*The data underlying the fire risk map previously produced by Mitri et al. (2017), the NCSR risk map, the most recent land cover/land use map of Lebanon, and fire hotspots detected from 2001 to 2021, were collected and pre-processed. More specifically, the fire risk map of Mitri et al. (2017) was cleaned from previous classification errors and smoothed to reflect better reality on the ground. Its attribute table was rebuilt accordingly. In addition, the collected fire hotspots data were screened for quality control and features associated with thermal anomalies outside the vegetation cover were removed to the best extent possible. The fire occurrence dataset helps in refining the classification of fire risk classes by adjusting the class' threshold. In addition, a set of

criteria was initially developed for use in the development of the map when intersecting the NCSR fire risk map with the processed fire risk map (Mitri et al., 2017). As a result, areas previously classified with a risk of fire but are now bare land and/or bare soils were excluded from the new classification. Areas with the same risk classes on the two maps were kept in their initial classification. Areas with a one level difference in their risk values were re-classified with the highest risk level and areas with more than one level difference were re-classified with the middle value. The final classification was manually refined in some places (i.e., presence of rugged topography).

## A. ALIGNMENT WITH GEF-8 PROGRAMMING STRATEGIES AND COUNTRY/REGIONAL PRIORITIES

Describe how the proposed interventions are aligned with GEF- 8 programming strategies and country and regional priorities, including how these country strategies and plans relate to the multilateral environmental agreements.

Confirm if any country policies that might contradict with intended outcomes of the project have been identified, and how the project will address this.

For projects aiming to generate biodiversity benefits (regardless of what the source of the resources is - i.e., BD, CC or LD), please identify which of the 23 targets of the Kunming-Montreal Global Biodiversity Framework the project contributes to and explain how. (max. 500 words, approximately 1 page)

The proposed project is aligned with the programming directions of the Biodiversity, Climate Change and Land Degradation Focal Areas. The project specifically aligns with the Biodiversity objective of improving conservation, sustainable use, and restoration of natural ecosystems, and the Land degradation objectives of avoiding and reducing land degradation through sustainable land management (SLM) & reversing land degradation through landscape restoration. The project objective of reducing wildfire risks and improving sustainable forest landscape management in selected fire hotspots in Lebanon will be achieved through as increase the forest area under sustainable community-based management while enhancing the responsiveness of forest guards and early responders to wildfire risks and actual fire occurrences. The project will contribute to: 1) increase areas of landscape under improved management, 2) increase are of lands and ecosystems under restorations, and 3) mitigate greenhouse gas emissions.

Lebanon's updated Nationally Determined Contribution (NDC-2021) prioritizes adapting to climate change in the agriculture and forestry sectors to achieve sustainable forest management, ecological integrity, and social and economic development. The NDC outlines several actions in the forest sector, including limiting fire risk management activities and applying pest management, reforestation, and afforestation.

In addition to that, Lebanon's 2016 National Biodiversity Strategy and Action Plan (NBSAP) aims to integrate biodiversity into sectoral and cross-sectoral strategies, plans, and programs. However, the total biocapacity of Lebanon in 2008 was only 1.6 million gha, far less than its ecological footprint of 11.9 million gha, indicating unsustainable use of natural resources.

Moreover, Lebanon's National Action Plan under the UNCCD is a strategic framework for combating land degradation. The 2018 National Report on Land Degradation Neutrality Target Setting Programme identified 39% of Lebanese territory with high exposure to land degradation. By 2030, Lebanon aims to improve land productivity and soil organic carbon stock, maintain the landscape mosaic, and enhance the role of forests and trees in providing sustainable products and services in urban and rural areas. Lebanon is committed to three key objectives to ensure the sustainable management of its natural resources, through improving land productivity and soil organic carbon stock in forests, croplands, and grasslands, improving the landscape mosaic, including forests, other wooded lands, grasslands, and croplands, while limiting their conversion to other land covers, and enhancing the role of forests and trees in urban and rural areas in providing sustainable products and services.

To achieve these objectives, the country has identified specific measures and targets. First, at least 10,000 hectares of forest landscapes will be restored through reforestation and afforestation. Second, sustainable

forest management practices will be implemented on all public forests, and private forests will be promoted for sustainable management. This will reduce the occurrence of forest fires and the conversion of forests into other land-uses. Third, Land Degradation Neutrality (LDN) will be leveraged into land-use planning and sectorial policies and strategies.

Additionally, the country will develop financial incentives for the implementation of sustainable land management practices that are in line with mitigation and adaptation strategies for climate change and conservation of biological diversity. It will also promote research on sustainable land management and develop partnerships with local, national, and international organizations for the promotion of sustainable land management practices and LDN. These efforts will help ensure the sustainable use of Lebanon's natural resources for the benefit of current and future generations.

The project will be carried out within the framework of Lebanon's National Forest Plan (NFP) 2015-2025 and the updated National Forest Fire Management Strategy (2023) implemented by the Ministry of Agriculture. The NFP outlines the government's measures to promote sustainable management, coordination, and collaboration among the public and private sectors. It also aims to achieve targets (1,11 and 23) of the Kunming-Montreal Global Biodiversity Framework by establishing restoration and rehabilitation plans in degraded areas, enhancing ecosystem resilience in forest areas, and developing gender-responsive forest fire management plans in "hotspot" areas.

## B. POLICY REQUIREMENTS

### Gender Equality and Women's Empowerment:

We confirm that gender dimensions relevant to the project have been addressed as per GEF Policy and are clearly articulated in the Project Description (Section B).

Yes

### Stakeholder Engagement

We confirm that key stakeholders were consulted during PIF development as required per GEF policy, their relevant roles to project outcomes and plan to develop a Stakeholder Engagement Plan before CEO endorsement has been clearly articulated in the Project Description (Section B).

Yes

### Were the following stakeholders consulted during project identification phase:

Indigenous Peoples and Local Communities: Yes

Civil Society Organizations: Yes

Private Sector:

### Provide a brief summary and list of names and dates of consultations

A full stakeholder analysis was conducted through a PROGREEN TA implemented by the World Bank. The consultations were conducted with stakeholders at the national and sub-national levels. Key stakeholders consulted include: The key government entities consolidated are : MoE, MoA and the DRM Unit. Other stakeholders consulted include:

- Head of the Environment Parliamentarian Committee
- Nature Reserve Committees (12 in total)
- Civil Defense
- Army - CIMIC, Operations, Air Forces
- Governorates – Mount Lebanon, South, Akkar
- Casas – Aley, Shouf, Baabda, Maten, Jezzine, Marjeyoun, Byblos, Bcharre, Zgharta
- Union of Municipalities, Municipalities in hotspots with highest forest fire risk based on fire risk map 2022: Akkar, Minieh-Dinniyeh, Aley-Shouf – incl. areas from Metn-Baabda)
- Internal Security Forces – Operations, training academy, regional and local offices in hot fire zones
- National Center for Scientific Research CNRS - Remote sensing Center
- Balamand University - Land and Natural Resources Program, Institute of the Environment
- NGOs (AFDC, LRI, Darb Akkar, Green Southerners)
- Religious groups (to be identified based on the fire hot zones)
- Agriculture cooperatives (cooperatives working on activities related to forests and agroforestry).
- Land users (Landowners, industries, shepherds, beekeepers, scouts, touristic projects, etc.)

(Please upload to the portal documents tab any stakeholder engagement plan or assessments that have been done during the PIF development phase.)

## Private Sector

Will there be private sector engagement in the project?

Yes

And if so, has its role been described and justified in the section B project description?

Yes

## Environmental and Social Safeguard (ESS) Risks

We confirm that we have provided indicative information regarding Environmental and Social risks associated with the proposed project or program and any measures to address such risks and impacts (this information should be presented in Annex D).

Yes

### Overall Project/Program Risk Classification

PIF	CEO Endorsement/Approval	MTR	TE
Medium/Moderate			

## C. OTHER REQUIREMENTS

### Knowledge management

We confirm that an approach to Knowledge Management and Learning has been clearly described in the Project Description (Section B)

Yes

## ANNEX A: FINANCING TABLES

### GEF Financing Table

#### Indicative Trust Fund Resources Requested by Agency(ies), Country(ies), Focal Area and the Programming of Funds

GEF Agency	Trust Fund	Country/ Regional/ Global	Focal Area	Programming of Funds	Grant / Non-Grant	GEF Project Grant(\$)	Agency Fee(\$)	Total GEF Financing (\$)
World Bank	GET	Lebanon	Biodiversity	BD STAR Allocation: BD-1	Grant	1,150,000.00	109,250.00	1,259,250.00
World Bank	GET	Lebanon	Climate Change	CC STAR Allocation: CCM- 1-4	Grant	500,000.00	47,500.00	547,500.00
World Bank	GET	Lebanon	Land Degradation	LD STAR Allocation: LD-4	Grant	808,000.00	76,760.00	884,760.00
World Bank	GET	Lebanon	Land Degradation	LD STAR Allocation: LD-1	Grant	1,000,000.00	95,000.00	1,095,000.00
<b>Total GEF Resources (\$)</b>						<b>3,458,000.00</b>	<b>328,510.00</b>	<b>3,786,510.00</b>

### Project Preparation Grant (PPG)

Is Project Preparation Grant requested?

false

PPG Amount (\$)

PPG Agency Fee (\$)

GEF Agency	Trust Fund	Country/ Regional/ Global	Focal Area	Programming of Funds	Grant / Non- Grant	PPG(\$)	Agency Fee(\$)	Total PPG Funding(\$)
<b>Total PPG Amount</b>						<b>0.00</b>	<b>0.00</b>	<b>0.00</b>

Please provide justification

### Sources of Funds for Country Star Allocation

GEF Agency	Trust Fund	Country/ Regional/ Global	Focal Area	Sources of Funds	Total(\$)
------------	------------	---------------------------------	------------	------------------	-----------

World Bank	GET	Lebanon	Biodiversity	BD STAR Allocation	1,259,250.00
World Bank	GET	Lebanon	Climate Change	CC STAR Allocation	547,500.00
World Bank	GET	Lebanon	Land Degradation	LD STAR Allocation	1,979,760.00
<b>Total GEF Resources</b>					<b>3,786,510.00</b>

## Indicative Focal Area Elements

Programming Directions	Trust Fund	GEF Project Financing(\$)	Co-financing(\$)
BD-1-3	GET	1,150,000.00	42000000
LD-4	GET	808,000.00	30000000
CCM-1-4	GET	500,000.00	18000000
LD-1	GET	1,000,000.00	36000000
<b>Total Project Cost</b>		<b>3,458,000.00</b>	<b>126,000,000.00</b>

## Indicative Co-financing

Sources of Co-financing	Name of Co-financier	Type of Co-financing	Investment Mobilized	Amount(\$)
GEF Agency	World Bank	Loans	Investment mobilized	126000000
<b>Total Co-financing</b>				<b>126,000,000.00</b>

Describe how any "Investment Mobilized" was identified

The project will coordinate activities with the Lebanon: Green Agri-food transformation for economic recovery (GATE) (P180334) – the GATE project is a \$200 million loan which, \$126 million of which will account for co-financing. The GATE project will support job creation in rural areas through the development of inclusive and climate smart agricultural value chains; it will contribute to:

- Beneficiaries adopting improved and climate smart technologies promoted by the project to enhance climate resilience and environmental sustainability, disaggregated by gender, youth, refugees.
- Improved access to enabling services for agri-food development in targeted lagging areas.
- Increased employment in farms, agri-business and -tourism enterprises benefiting from the project support, disaggregated by women, youth and refugees.

## ANNEX B: ENDORSEMENTS

### GEF Agency(ies) Certification

GEF Agency Type	Name	Date	Project Contact Person	Phone	Email
GEF Agency Coordinator	Angela Armstrong	4/12/2023			aarmstrong@worldbank.org

Project Coordinator	Andrea Kutter	4/12/2023		akutter@worldbank.org
---------------------	---------------	-----------	--	-----------------------

Record of Endorsement of GEF Operational Focal Point (s) on Behalf of the Government(s):

Name	Position	Ministry	Date (MM/DD/YYYY)
Nasser Yassin	Minister of Environment	Ministry of Environment	4/11/2023

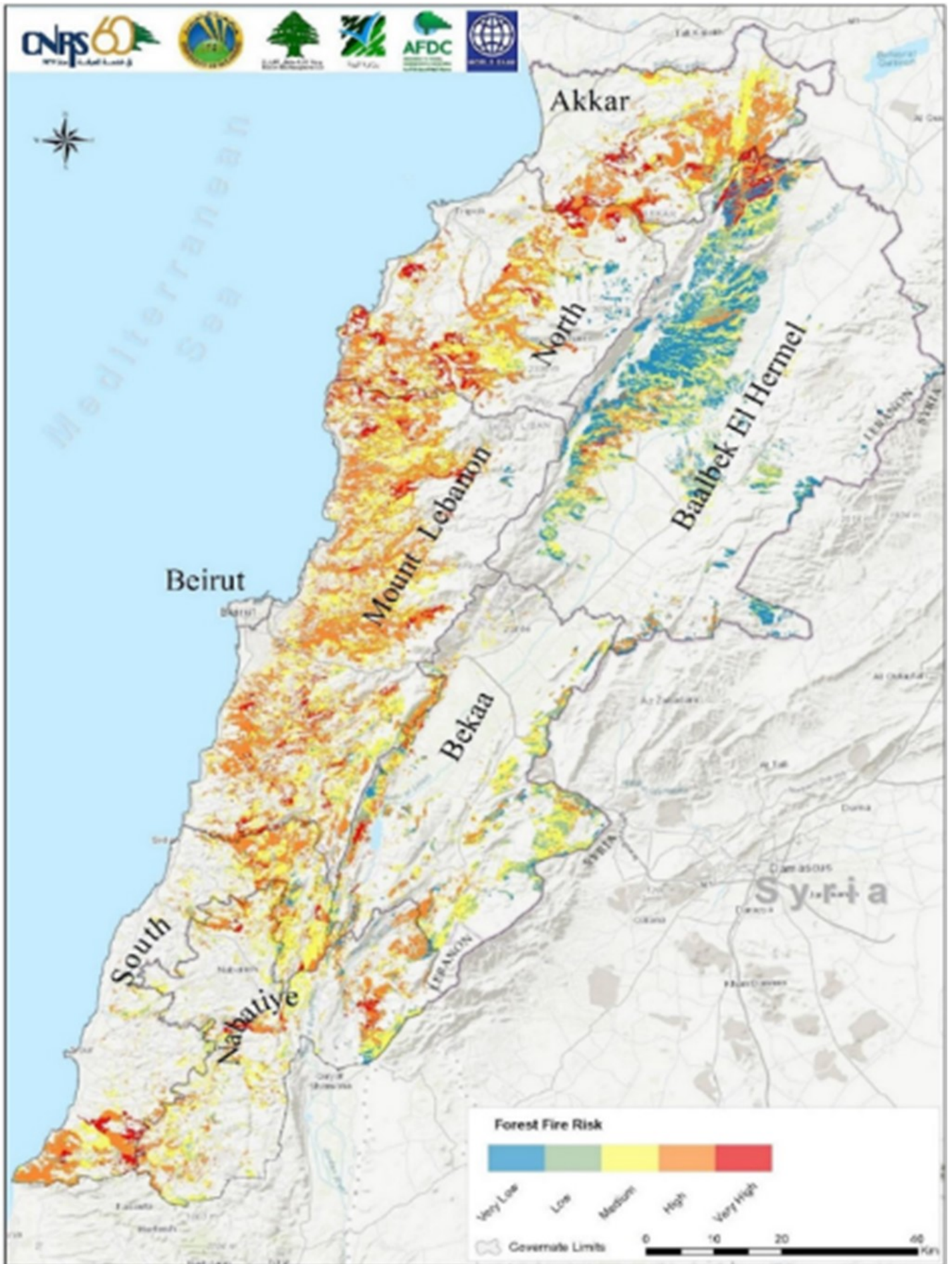
ANNEX C: PROJECT LOCATION

Please provide geo-referenced information and map where the project interventions will take place

**The project will place a total area of 12,638 ha under improved sustainable forest landscape management practices and restore 10,000 ha of forests in degraded lands with focus on creating bio-corridors to link forest fragments.** The targeted landscapes (Akkar, Minieh-DInniyeh, Aley-Shouf – incl. areas from Metn-Baabda) are categorized by the MoE as “fire hotspot” areas based on the use of the most updated fire risk mapping (i.e., distributed within a total of 11 administrative units across the country). This landscape makes part of the total size forests and other wooded land of 22,086 ha which are assessed with a risk for forest fires and very high exposure to land degradation as characterized by the LDN

assessment.





**ANNEX D: ENVIRONMENTAL AND SOCIAL SAFEGUARDS SCREEN AND RATING**

**(PIF level) Attach agency safeguard screen form including rating of risk types and overall risk rating.**

**ANNEX E: RIO MARKERS**

Climate Change Mitigation	Climate Change Adaptation	Biodiversity	Land Degradation
Significant Objective 1	No Contribution 0	Significant Objective 1	Principal Objective 2

**ANNEX F: TAXONOMY WORKSHEET**