



Addressing tenure governance and gender equality in land rights to strengthen LDN initiatives

Review PIF and Make a recommendation

Basic project information

GEF ID

11501

Countries

Global

Project Name

Addressing tenure governance and gender equality in land rights to strengthen LDN initiatives

Agencies

FAO

Date received by PM

2/22/2024

Review completed by PM

3/18/2024

Program Manager

Ulrich Apel

Focal Area

Land Degradation

Project Type

MSP

GEF-8 PROJECT IDENTIFICATION FORM (PIF) REVIEW SHEET

1. General Project Information / Eligibility

a) Does the project meet the criteria for eligibility for GEF funding?

b) Is the General Project Information table correctly populated?

Secretariat's Comments

03/01/2024: Not fully.

a) Yes.

b) The executing partner & type fields are left blank. Please provide the information in line with the execution arrangement described in the PIF text.

03/18/2024: Addressed.

Cleared

Agency's Comments

The requested information was updated.

2. Project Summary

Does the project summary concisely describe the problem to be addressed, the project objective and the strategies to deliver the GEBs or adaptation benefits and other key expected results?

Secretariat's Comments

03/01/2024: Not fully.

- The key component of the project described as: "consolidation of an applied framework for informed decision-making to formulate and implement LDN initiatives integrating governance of tenure and gender equality in land rights dimensions" is not fully clear. What is the applied framework and what means consolidation? Can this be expressed in a better way?

- Generic reference to "stakeholder": either clearly define who they are or refer to detailed information in the respective PIF section.

- Generic reference to "regional and global levels through strong collaboration and partnerships": please specify further on how this will be done either here in the summary or make reference to detailed information in the PIF.

04/03/2024: Addressed.

Cleared

03/18/2024: Mostly Addressed. Please further revise the following:

" The project will support CSOs [please clearly specify who are the CSOs being targeted here? Networks or groups? Should they have specific relation / work on land tenure / governance issues?] to strengthen the inclusion and representation of smallholders in LDN actions, including actions funded by the GEF and other donors as well as private investments in LDN. Improved CSO networking and dialogue internationally will also contribute to enhancing south-south cooperation.

"The project will also provide capacity and serve as a platform for vulnerable groups ["groups in vulnerable situation"] such as Indigenous Peoples, youth and women to participate more actively in the UNCCD process."

Agency's Comments

Updated comments ? 26/03/24:

The paragraph has been updated.

Earlier comments:

- The language has been adjusted for clarity throughout the PIF - breaking down ***Component 1 to the development of combined assessment tool and a comprehensive capacity development package based on the VGGT Technical Guide***. This would entail FAO's intellectual leadership in the process, with inputs from anticipated executing partners : Landesa, TMG, Gov't entities and national umbrella CSOs incorporating stakeholders (women's groups IPLCs, etc). Inserted under Component 2 description.

- Stakeholder and partnership description has been enhanced throughout the PIF, highlighted in yellow.

3 Indicative Project Overview

3.1 a) Is the project objective presented as a concise statement and clear?

b) Are the components, outcomes and outputs sound, appropriate and sufficiently clear to achieve the project objective and the core indicators per the stated Theory of Change?

Secretariat's Comments

03/01/2024: Not fully.

- The "missing element" in the Project Overview and the project description is to clarify that the project will select 5-6 countries during the PPG for pilot activities. Please indicate some general selection criteria for those countries. It should also be clarified that the selected countries will provide LoEs. Further, it should be better outlined what activities will be supported / targeted in the pilot countries. Moreover, in those countries, some positive results should be achieved in terms of gender equality, not only "identify gender-based inequalities to ensure that they are not exacerbated" (as mentioned in the PIF) - the pilots should be done with countries who are willing to address those inequalities (i.e. could be a selection criteria).

- The project objective statement should be more concise.

- Component 1: "applied framework". It is not fully clear what is meant by that and which process will lead to develop / consolidate the framework.

- Component 2: It duplicates the output 1.1 - this may have been entered inadvertently. Please check.

- Outputs 2.1 and 2.2 need some further detail on future country identification (it should be made clear that the countries will be selected during PPG) and when and at what level the dialogues will be organized (either in this table or make reference to the detailed section in the PIF).

03/18/2024: Remaining issues:

- While comments have been adequately addressed, we noticed that the titles of the components (and partly outputs) are worded differently in the Indicative Project Overview table compared to the text in the Project Description. In order to avoid confusion, please use the same wording throughout the PIF.

04/03/2024: Addressed.

Cleared

- Please add a brief explanation to the sentence under output 1.2, which clarifies what happens after the 3 to 6 months period co-facilitated by FAO's e-learning.

- Output 2.3: In the "targeted capacity development processes", Women's organizations, local community and grassroots organizations, youth representatives should be included.

- Please include a brief description of a project Communications Strategy/Plan for outreach, awareness raising and dissemination of outputs/results/lessons. This can be

added to a project component (such as component 3) as well as the overall project description, as appropriate.

Agency's Comments

Updated comments ? 26/03/24:

- Consistency has been ensured throughout the PIF with the following component & output names:

Component 1: Inclusive, integrated and informed decision making

Component 2 National level evidence-based implementation

Component 3: Knowledge management and learning

- Under output 1.2, a paragraph has been added to clarify the learning.

- Language under output 2.3 now explicitly mentions the suggested groups.

- A few paragraphs have been added on the communication plan of the project.

Earlier comments:

Extensive country selection criteria have been inserted *under Indicative project overview section* as follows:

During PPG phase, the project will select between 4 to 6 countries based on the following criteria and conditions:

- ? Preference for countries having applied to the joint UNCCD ? FAO Joint Initiative on tenure integration for land restoration;
- ? Having an existing Multi-Stakeholder platform or dialogue mechanism on tenure and / or VGGT and / or LDN;
- ? Having already ongoing project work on tenure / VGGT and proven commitment to advance gender equality;
- ? Having other relevant planned projects / programs with which synergies that can be drawn upon during the intended implementation period of this project (July 2025 ? June 2028);
- ? Available budget and co-funding;
- ? Geographical balance over two or three regions;
- ? Confirmation of country engagement will be secured early in the PPG phase through the issuance of relevant Letters of Endorsement.

Country-level activities are highlighted under Component 2, which will entail the support provided in at least 4 countries from different contexts to formulate and implement LDN initiatives based on comprehensive combined assessments (biophysical, legal, socio-economic and gender assessments) that tackle undermining tenure issues and gender unequal tenure rights to land. In addition, VGGT multi-stakeholder dialogues are organized or enhanced (if existing) to incorporate the LND and gender equality angle, and the capacities of of selected national stakeholders and decision-makers will be significantly transformed through a blended institutional learning programme, that combines face-to-face and online activities and mentoring.

- ? The project objective statement has been shortened:

To develop capacities to strengthen responsible tenure governance in LDN initiatives

? Component 1 has been reformulated (see above), and the process of developing the tool has been illustrated in output 1.1 of the description.

? Duplication has been corrected.

Country identification criteria are explained above. Dialogues and other activities will build on existing Multi-Stakeholder Platforms or dialogue mechanism on tenure and/or VGGT and/or LDN and ongoing project work on tenure / VGGT; as well as synergies with other GEF investments and relevant programmes be sought.

3.2 Are gender dimensions, knowledge management, and monitoring and evaluation included within the project components and appropriately funded?

Secretariat's Comments

03/01/2024: Clarification required.

- The gender dimension are well addressed, however, the identified barrier 3: "Persisting gender inequalities hamper effective LDN initiatives" [...] "will be systematically addressed in all components (ranging from comprehensive assessments, capacity development materials and knowledge products) as the project proposes to uphold the Convention's clear gender equality principles and also unlock women's effectiveness as agents of change in the implementation of the Convention to enhance the achievement of LDN targets through their effective participation and empowerment." Question: has it been considered to address this barrier through a separate component to enable a targeted approach?

- Further, it seems not fully in line with the context of this project and in view of this barrier, that the share of women/men benefitting from the project is exactly 50/50. Wouldn't it be more appropriate to target a much higher share of women?

- Description of M&E activities: Please make sure that the described monitoring includes the gender action plan, and that it is budgeted, monitored, and reported on regularly as well.

03/18/2024: Mostly addressed. However,

- Please ensure that the Gender Action Plan will be budgeted, monitored and reported on regularly. This has not been mentioned in the outline of the gender action plan.

04/03/2024: Addressed.

Cleared

Agency's Comments

Additional comments 26 March 2024:

The paragraph on the GAP has been amended to include proper budgeting and monitoring and reporting on gender results, while also the Gender Equality and Women's Empowerment section has been updated.

Earlier comments:

This feedback is much appreciated.

A lot of consideration was put into addressing gender equality as a standalone component. It was decided however that all components will have significant gender implications (hence the extensive reference to the *LDN-tenure-gender equality nexus* across outputs), building on FAO's and its partners extensive experience, ongoing and past projects and wealth of tools and approaches in this arena.

During the PPG phase a **dedicated gender action plan** will be elaborated for the project with ***gender-sensitive indicators*** in the results framework ensuring the collection of sex-disaggregated data and information on gender and tracing gender-responsive measures and actions in relevant activities in project components.

Dedicated human and financial resources will be highlighted to guarantee the smooth implementation of these commitments.

Gender-equitable participation in land governance requires that women are to be both *decision and policy makers* and *subjects of land governance policies and decisions*.

Consequently, **a dual approach will to be applied** ? women need to be involved in the decisions related to laws and policies at the national level, while *policymakers, both men and women*, need to consult effectively with women at all levels on the content of any legislation or decision to ensure that those reflect these different perspectives, while also themselves understanding the different impacts land and natural resource governance can have on women and men.

Multistakeholder consultation processes will operate at both the national and local level and will be structured in a way that effectively encourages women to feel safe and able to participate.

To this end, the **core indicator ration will be adjusted to 45% male and 55% female, with the caveat that it is crucially important to target male stakeholders that** are often predominantly present in decision-making roles and engage them in a comprehensive manner and make them allies in the effort to shift the needle on gender equality in relation to the LDN and tenure arena.

3.3 a) Are the components adequately funded?

b) Are the GEF Project Financing and Co-Financing contributions to PMC proportional?

c) Is the PMC equal to or below 5% of the total GEF grant for FSPs or 10% for MSPs? If the requested PMC is above the caps, has an exception (e.g. for regional projects) been sufficiently substantiated?

Secretariat's Comments

03/01/2024: Yes.

Cleared

Agency's Comments

4 Project Outline

A. Project Rationale

4.1 SITUATION ANALYSIS

a) is the current situation (including global environmental problems, key contextual drivers of environmental degradation, climate vulnerability) clearly and adequately described from a systems perspective?

b) Are the key barriers and enablers identified?

Secretariat's Comments

03/01/2024: Yes.

Cleared

Agency's Comments

4.2 JUSTIFICATION FOR PROJECT

a) Is there an indication of why the project approach has been selected over other potential options?

b) Does it ensure resilience to future changes in the drivers?

c) Is there a description of how the GEF alternative will build on ongoing/previous investments (GEF and non-GEF), lessons and experiences in the country/region?

d) are the relevant stakeholders and their roles adequately described?

Secretariat's Comments

03/01/2024: Not fully.

d) Please improve the description of the stakeholders and their roles as well as the different levels in section A.7

- "civil society and grassroots organizations": does it include IPLCs? Women's organizations / cooperatives?

- National level is a very broad level. It would be good to have a better indication of future plans for involvement of organizations at the community / village level and how local governing bodies (including traditional ones) will be involved.

- "Partnerships": Please specify what partnerships are being referred to?

03/18/2024: Mostly addressed.

a) Please add "gender experts" in the reference to IPLCs and Women's organizations.

b) During the PPG, we recommend to consult with WOCAN, which has done work on measuring the economic benefits of interventions to empower women -- there may be some value to consider the W+ Standards in this project.

04/03/2024: Addressed.

Cleared

Agency's Comments

Additional comments 26 March 2024:

a) Gender experts have been added as requested.

b) WOCAN will be consulted with. Thank you for the suggestion.

Earlier comments:

Stakeholder description has been enhanced, including reference to IPLCs and Women's organizations and cooperatives.

Extensive *stakeholder mapping and the development of a stakeholder engagement plan* is foreseen during PPG phase including the development of a stakeholder engagement plan, complementing the existing Multi-stakeholder Platforms and other institutional structures in selected countries to ensure the participation of the full range of concerned actors and beneficiaries.

Added under the Institutional arrangement section:

The implementation of country level activities will be conducted in collaboration with relevant government entities as well as **national CSOs and umbrella organizations**, ensuring wide engagement and participation in policy dialogues and exchanges **trickling down to the local/community levels**, allowing for a broad dissemination and uptake of learning materials and best practices, including through the Training-of-Trainers approach,

Partnerships (regional) and synergies clarified (other ongoing initiatives) (Section 7 of Project outline).

5 B. Project Description

5.1 THEORY OF CHANGE

a) Is there a concise theory of change that describes the project logic, including how the project design elements will contribute to the objective, the expected causal pathways, and the key assumptions underlying these?

b) Are the key outputs of each component defined (where possible)?

Secretariat's Comments

03/01/2024: Not fully.

- The ToC diagram is basically only a description of the barriers, project outcomes and outputs, and goal with arrows in between. It doesn't explain what the sequence is that will lead to change. Please provide a short ToC statement under the diagram, that describes simple sequences and pathways leading to the intended goal.

- This is partly being attempted in the text above the ToC diagram. However, this text needs some edits and further elaboration, e.g.:

a) "It is assumed" - this is a fact underpinned by scientific evidence, not an assumption.

b) Consider promoting innovative and transformative solutions (Note: the details to be outlined in the ToC and the specific outputs, activities). Here, the innovation and transformational aspects could be: to aim to change mindsets (through awareness-raising and capacity-building, engagements with community and village leaders), way of doing things (changes in policies, institutional mechanisms), dynamics within communities, etc.), establishing KM platform for continuous peer-to-peer learning, South-South exchange, platform for dialogue, etc.

c) There may be an opportunity for the project to be more "transformative", i.e., to impact policies, systems and institutions.

d) Mention 'women', in the bullet: "strengthen tenure security and recognition and safeguarding of legitimate tenure rights for smallholders, local communities and Indigenous Peoples, to invest in and protect their land;"

e) in pathway 3: please ensure women's access to and ownership of land and natural resources.

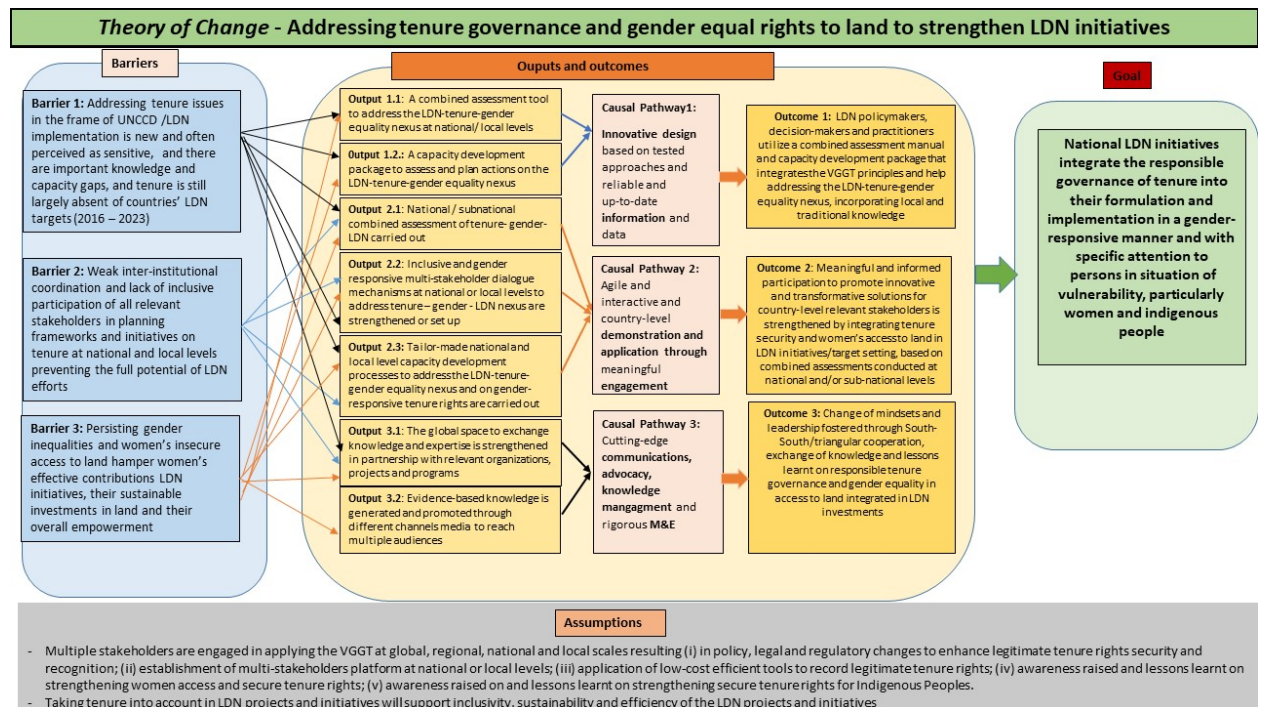
03/18/2024: Addressed.

Cleared

Agency's Comments

Causal pathways **added to TOC scheme (updated)** as well as relevant description

- Text on innovative approaches was added
- Transformative policy impact description added.
- It is assumed ? corrected
- Women added to bullet.



e) Pathway 3 incorporates the complexities and nuances of gender equality in the concept of tenure. The pathway goes beyond the focus on *ownership* to ensure delivering tenure security related to legitimate tenure rights (*access, use, management, etc.*) and enhance equitable land governance (women's participation, effective documentation of women's rights...) and considers how the ability to exercise these rights is dependent on gender and other dimensions of power.

Special attention is accorded to the interaction between customary and formal legal norms as well as the relevance of family law regimes in the equal capacity of women and men to exercise decision-making rights over land and natural resources.

5.2 INCREMENTAL/ADDITIONAL COST REASONING

Is the incremental/additional cost reasoning properly described as per the Guidelines provided in GEF/C.31/12?

Secretariat's Comments

03/01/2024: Yes.

Cleared

Agency's Comments

5.3 IMPLEMENTATION FRAMEWORK

a) Is the institutional setting, including potential executing partners, outlined and a rationale provided?

b) Comments to proposed agency execution support (if agency expects to request exception).

c) Is there a description of potential coordination and cooperation with ongoing GEF-financed projects/programs and other bilateral/multilateral initiatives in the project area

d) Are the proposed elements to capture and disseminate knowledge and learning outputs and strategic communication adequately described?

Secretariat's Comments

03/01/2024: Not fully.

If FAO is expecting to provide execution support, FAO needs to be entered alongside the three executing partners in Part 1 of the PIF template.

03/18/2024: Addressed.

Cleared

Agency's Comments This has been corrected.

5.4 a) Are the identified core indicators calculated using the methodology included in the corresponding Guidelines (GEF/C.54/11/Rev.01)?

b) Are the project's indicative targeted contributions to GEBs (measured through core indicators)/adaptation benefits reasonable and achievable?

Secretariat's Comments

03/01/2024: Not fully.

- Please re-consider share of women beneficiaries in core indicator table (as mentioned above).

03/18/2024: Addressed.

Editorial comment: In the section describing the GEBs, there is a incomplete sentence: "The primary aim of capacities to leverage LDN investments." Please consider revising.

04/03/2024: Addressed.

Cleared

Agency's Comments

Additional comments 26 March 2024:

The incomplete sentence has been deleted.

Earlier comments:

Core indicator calculation updated to reflect 45-55%, however, meaningful participation of men will also be sought, as explained above.

5.5 NGI Only: Is there a justification of financial structure and use of financial instrument with concessionality levels?

Secretariat's Comments_{n/a}

Agency's Comments

5.6 RISKS

a) Are climate risks and other main risks relevant to the project described and addressed within the project concept design?

b) Are the key risks that might affect the project preparation and implementation phases identified and adequately rated?

c) Are environmental and social risks, impacts and management measures adequately screened and rated at this stage and consistent with requirements set out in SD/PL/03?

Secretariat's Comments

03/01/2024: Yes.

03/18/2024: Inconsistency on Environmental and Social Safeguards:

We note that the project's overall ESS risk is classified as low, and FAO attached the project's Full ES Risk screening checklist. However, the environmental and social context in the Key Risks in the Portal selected ?moderate? risk identifying social marginalization of women and Indigenous People from participation in decision-making, implementation and sharing of benefits. Please make these risks consistent and revise.

04/03/2024: Addressed and clarified.

Cleared

Agency's Comments

26 March 2024

This has been changed, however, please note that the ESS screening looks at the risks **from** the project, while the Key Risks section describes the risks **to** the project. Therefore, at times these risk levels can be different. In this case, a low risk is more reflective of the level, as suggested.

5.7 Qualitative assessment

a) Does the project intend to be well integrated, durable, and transformative?

b) Is there potential for innovation and scaling-up?

c) Will the project contribute to an improved alignment of national policies (policy coherence)?

Secretariat's Comments

03/01/2024:

- Please provide some more details on how the interventions will be made sustainable, especially in the context of output 1.2 (learning opportunities), and how in general the results of the project can be sustained in the long-term, e.g. by embedding it into the UNCCD process? Or by linking some elements to the WOCAT database?

- I section A.8 "Innovation, Sustainability, and Potential for Scaling Up":

a) please explore linkages not only to the GEF-8 strategic objectives, but also specifically to the new GEF Knowledge Management Strategy in GEF-8.

b) please explain what "blended learning" means.

03/18/2024: Additional / remaining Comments:

a) Thank you for adding reference to the UNCCD Gender Caucus in section A.8 "Innovation, Sustainability, and Potential for Scaling Up". Please add also reference to the GEF Gender Partnership (to which UNCCD and FAO are members) as another platform where stakeholder engagement (sharing of tools, lessons learned) among gender focal points of the 18 GEF IAs and the 5 Conventions' gender focal points can be further enhanced.

b) Is there a plan for the sustainability of the database / one-stop platform? How is the project going to ensure that after the life-span of the project, that the database and monitoring platform as well as the one-stop platform will continuously be updated?

04/03/2024: Addressed.

Cleared

Agency's Comments

Additional comments 26 March 2024:

a) The GGP has been added as project partner.

b) In relation to point (b), the project proposes to connect with the Global Land Observatory, an ongoing initiative led by FAO, ILC, and CIRAD, involving numerous stakeholders and donors. The formulation has been refined to emphasize that project outputs will be shared and contribute to the Global Land Observatory, while the FAO institutional website (specifically, the land and water division, publication section) will display these outputs. Therefore, the future visibility and accessibility of the project's outputs are not contingent upon the sustainability of the Global Land Observatory.

Relevant language has been reformulated in the PIF under component 3.

Earlier comments:

Sustainability considerations enhanced, linkages with UNCCD process and WOCAT added.

To ensure further scaling up and wide dissemination for relevant LDN practitioners globally, the project will engage with the WOCAT Network members to share best practices and lessons learnt for a global audience, allowing for further dialogue and dissemination of developed tools and approaches.

a) Linkages with KM & L Strategy added.

The project will support the **GEF's Knowledge Management & Learning Strategy's** priorities identified, ensuring that innovation and learning is systematized, durable and up-to-date. The KM&L Strategy's Pathway 3 centered around *Empowerment and exchange to achieve more scaling and durability from GEF investments through greater flow of, and ownership of, knowledge and learning among and across partners and countries?* is particularly relevant to the project's design.

b) Blended learning approach defined:

The project will deploy novel capacity development approaches to promote **blended learning program**, that combines face-to-face and online activities in a seamless and complementary flow of learning.

6 C. Alignment with GEF-8 Programming Strategies and Country/Regional Priorities

6.1 Is the project adequately aligned with focal area and integrated program strategies and objectives, and/or adaptation priorities?

Secretariat's Comments

03/01/2024: Yes.

Cleared

Agency's Comments

6.2 Is the project alignment/coherent with country and regional priorities, policies, strategies and plans (including those related to the MEAs and to relevant sectors)

Secretariat's Comments

03/01/2024: Yes.

Cleared

Agency's Comments

6.3 For projects aiming to generate biodiversity benefits (regardless of what the source of the resources is - i.e. BD, CC or LD), does the project clearly identify which of the 23 targets of the Kunming-Montreal Global Biodiversity Framework the project contributes to and how it contributes to the identified target(s)?

Secretariat's Comments_{n/a}

Agency's Comments

7 D. Policy Requirements

7.1 Is the Policy Requirements section completed?

Secretariat's Comments

03/01/2024: Not fully.

- It appears that the private sector checkbox has been left blank? If there is no private sector involvement, please indicate accordingly.

03/18/2024: Addressed.

Cleared

Agency's Comments This has been corrected.

7.2 Is a list of stakeholders consulted during PIF development, including dates of these consultations, provided?

Secretariat's Comments

03/01/2024: Yes.

03/18/2024: ADDITIONAL COMMENT: In the stakeholder engagement mapping and in the development of the GAP, please ensure that women's associations/networks and experts on gender and land rights are meaningfully engaged in the different activities (including in developing training materials and knowledge products).

04/03/2024: Addressed.

Cleared

Agency's Comments

26 March 2024

Thank you for the additional comment. Also for the PPG phase, women engagement (through associations, networks) will be secured through proper budgeting and the use of appropriate outreach tools/approaches, which do not systematically exclude certain sections of the population. This same approach will be adopted during implementation.

8 Annexes

Annex A: Financing Tables

8.1 Is the proposed GEF financing (including the Agency fee) in line with GEF policies and guidelines? Are they within the resources available from (mark all that apply):

STAR allocation?

Secretariat's Comments

03/01/2024: Yes.

Cleared

Agency's Comments

Focal Area allocation?

Secretariat's Commentsn/a

Agency's Comments

LDCF under the principle of equitable access?

Secretariat's Commentsn/a

Agency's Comments

SCCF A (SIDS)?

Secretariat's Commentsn/a

Agency's Comments

SCCF B (Tech Transfer, Innovation, Private Sector)?

Secretariat's Commentsn/a

Agency's Comments

Focal Area Set Aside?

Secretariat's Comments

03/01/2024: Yes.

Cleared

Agency's Comments

8.2 Is the PPG requested within the allowable cap (per size of project)? If requested, has an exception (e.g. for regional projects) been sufficiently substantiated?

Secretariat's Comments

03/01/2024: Yes.

Cleared

Agency's Comments

8.3 Are the indicative expected amounts, sources and types of co-financing adequately documented and consistent with the requirements of the Co-Financing Policy and Guidelines?

Secretariat's Comments

03/01/2024: Yes.

The additional co-financing sources are welcomed.

Cleared

Agency's Comments

Annex B: Endorsements

8.4 Has the project been endorsed by the country? (ies) GEF OFP and has the OFP at the time of PIF submission name and position been checked against the GEF database?

Secretariat's Comments

03/01/2024: Not yet.

LoEs will be obtained during PPG, depending on the results of the country selection process.

Agency's Comments

Are the OFP endorsement letters uploaded to the GEF Portal (compiled as a single document, if applicable)?

Secretariat's Comments

Agency's Comments

Do the letters follow the correct format and are the endorsed amounts consistent with the amounts included in the Portal?

Secretariat's Comments

Agency's Comments

8.5 For NGI projects (which may not require LoEs), has the Agency informed the OFP(s) of the project to be submitted?

Secretariat's Comments^{n/a}

Agency's Comments

Annex C: Project Location

8.6 Is there preliminary georeferenced information and a map of the project's intended location?

Secretariat's Comments^{n/a} for a global project

Agency's Comments

Annex D: Safeguards Screen and Rating

8.7 If there are safeguard screening documents or other ESS documents prepared, have these been uploaded to the GEF Portal?

Secretariat's Comments

03/01/2024: Yes.

03/18/2024: Please note comments above in the risk section on inconsistencies in the risk level.

04/03/2024: Addressed & clarified.

Cleared

Agency's Comments

Annex E: Rio Markers

8.8 Are the Rio Markers for CCM, CCA, BD and LD correctly selected, if applicable?

Secretariat's Comments

03/01/2024: Yes.

Cleared

Agency's Comments

Annex F: Taxonomy Worksheet

8.9 Is the project properly tagged with the appropriate keywords?

Secretariat's Comments

03/01/2024: Yes.

Cleared

Agency's Comments

Annex G: NGI Relevant Annexes

8.10 Does the project provide sufficient detail (indicative term sheet) to take a decision on the following selection criteria: co-financing ratios, financial terms and conditions, and financial additionality? If not, please provide comments. Does the project provide a detailed reflow table to assess the project capacity of generating reflows? If not, please provide comments. Is the Partner Agency eligible to administer concessional finance? If not, please provide comments.

Secretariat's Commentsn/a

Agency's Comments

9 GEFSEC Decision

9.1 Is the PIF and PPG (if requested) recommended for technical clearance?

Secretariat's Comments

03/01/2024: No. Please address comments made in this review.

03/18/2024: No. Please address outstanding issues and additional comments.

Note: Please remove all yellow highlights in the final resubmission of the PIF.

04/03/2024: Yes. Program Manager recommends CEO approval of this MSP PIF.

Agency's Comments

9.2 Additional Comments to be considered by the Agency at the time of CEO Endorsement/ Approval

Secretariat's Comments03/01/2024: Please provide Letters of Endorsement for countries selected for pilot activities during the PPG.

Agency's CommentsLOEs are envisaged during PPG phase.

Review Dates

	PIF Review	Agency Response
First Review	3/1/2024	
Additional Review (as necessary)	3/18/2024	
Additional Review (as necessary)	4/3/2024	
Additional Review (as necessary)		
Additional Review (as necessary)		