



GEF-8 REQUEST FOR Climate Change enabling activity

Proposal for Funding Under the GET
Processing Type: Expedite

TABLE OF CONTENTS

SECTION 1: ENABLING ACTIVITY SUMMARY	3
A. Funding Elements	4
B. Enabling Activity Summary	5
ENABLING ACTIVITY COMPONENTS	6
SECTION 2: ENABLING ACTIVITY SUPPORTING INFORMATION.....	11
C. Eligibility Criteria	11
D. Institutional Framework	21
E. Monitoring and Evaluation Plan	23
SECTION 3: INFORMATION TABLES.....	25
F. GEF Financing Resources Requested by Agency, Country and Programming of Funds.....	25
G. Rio Markers.....	26
H. Record of Endorsement of GEF Operational Focal Point(s) on Behalf of the Government(s):	26
ANNEX A: RESPONSES TO STAKEHOLDER COMMENTS	26
ANNEX B: PROJECT BUDGET TABLE	26
ANNEX C: ENVIRONMENTAL AND SOCIAL SAFEGUARDS.....	30



SECTION 1: ENABLING ACTIVITY SUMMARY

Enabling Activity Title

Strengthening Indonesia’s Preparation on Second and Third Biennial Transparency Reports to the UNFCCC (BTR 2 and BTR3 Indonesia)

Country(ies)	GEF Enabling Activity ID
Indonesia	12266
GEF Agency(ies):	GEF Agency Enabling Activity ID
UNDP	10097
Submission Date	Expected Implementation Start
12/30/2025	4/1/2026
Project Executing Entity(s):	Executing Partner Type
Ministry of Environment/Environment Protection Agency	Government
GEF Focal Area (s)	Expected Duration (In Months)
Climate Change	48
Type of Report(s)	Expected Report Submission to Convention
UNFCCC Biennial Transparency Report (BTR)	12/31/2026
UNFCCC Biennial Transparency Report (BTR)	12/31/2028

A. Funding Elements

GEF-8 Program	Trust Fund	GEF Financing (\$)
CCM-EA	GET	1,200,000.00
Total Enabling Activity Cost		1,200,000.00

Does the enabling activity deviate from typical cost ranges? Yes No
 If yes, please describe

B. Enabling Activity Summary

Enabling Activity Objective

The objective of this project is to assist Indonesia in preparation and submission of its Second and Third Biennial Transparency Reports (BTR2 and BTR3), in line with its obligations under the United Nations Framework Convention on Climate Change (UNFCCC) and the Paris Agreement's (PA) Enhanced Transparency Framework (ETF), in accordance with the Modalities, Procedures and Guidelines (MPGs) adopted under Article 13 of the PA (Decision 18/CMA.1). The project includes preparation of Indonesia's BTR2, BTR3 and National Inventory Reports (NIRs), as well as monitoring, evaluation, and knowledge management activities. Building on results of the preparation of the First Biennial Transparency Report (BTR1) and respective lessons learned, this project will strengthen Indonesia's technical and institutional capacity to mainstream climate change concerns into sectoral and national development priorities. Through this enabling activity, Indonesia will enhance its national transparency system, improve institutional coordination, and build long-term capacity to track climate action, thereby fulfilling its reporting obligations under the UNFCCC and toward mobilization of climate finance.

Enabling Activity Summary

This project is prepared in line with the GEF8 Climate Change Focal Area Strategy and Associated Programming/ Pillar II: Foster enabling conditions to mainstream mitigation concerns into sustainable development strategies/ Objective 2.2 Support relevant Convention obligations and enabling activities.

The Article 13 of the Paris Agreement establishes an Enhanced Transparency Framework (ETF) for action and support designed to build trust and confidence that all countries are contributing their share to the global effort.

The CMA decided that Parties shall submit their first Biennial Transparency Report (BTR) and National Inventory Report (NIR), if submitted as a stand-alone report, in accordance with the adopted modalities, procedures and guidelines, at the latest by 31 December 2024 and that Least Developed Countries (LDCs) and Small Island Developing States (SIDS) may submit this information at their discretion. The MPGs were adopted in the Katowice Climate Package through decision 18/CMA.1 sets the rules for the implementation of the ETF under the PA. At the COP26, the 'Paris Agreement rulebook'/MPGs has been finalized. This set of rules lays out how countries are held accountable for delivering on their climate action promises and self-set targets under their Nationally Determined Contributions (NDCs) and enable the operationalization of the enhanced ETF (Decision 5/CMA.3: Guidance for operationalizing the modalities, procedures and guidelines for the enhanced transparency framework referred to in Article 13 of the Paris Agreement.).

The preparation of the BTR2 and BTR3 with the financial assistance of the GEF will serve to further strengthen institutional and technical capacities of Indonesia for implementing the Convention, Paris Agreement and reporting thereon to the UNFCCC. The project will provide the platform for furthering the development of the MRV and implementation of the ETF under the PA.

The project objectives will be achieved through the outcomes and outputs as defined in the Project Framework table below. The BTR2 and BTR3 will be compiled according to the guidelines, requirements and formats set by the MPGs. Their final formats will follow the outline for Biennial Transparency Report and apply common reporting tables and tabular formats presented in Decision 5/CMA.3.

Drawing on lessons from the preparation of previous National Communications (NCs), Biennial Update Reports (BURs) and BTR1 which underscored persistent coordination challenges, data and methodological inconsistencies, and limited documentation, the project will strengthen institutional arrangements, enhance

interoperable MRV systems, and establish standardized frameworks for emissions estimation and reporting. Targeted capacity-building activities will enable technical agencies to apply higher-tier methodologies consistent with the 2019 IPCC Refinement and to improve tracking of mitigation, adaptation, and NDC implementation. This approach is fully consistent with the GEF-8 Climate Change Strategy (Objective 2.2) to support Parties in meeting their Convention and Paris Agreement reporting obligations.

Indonesia submitted the following reports to UNFCCC:

1. First National Communication (NC1) in 1999.
2. Second National Communication (NC2) in 2011.
3. Third National Communication (NC3) in 2017; published in 2018.
4. First Biennial Update Report (BUR1) in 2014.
5. Second Biennial Update Report (BUR2) on 21 December 2018.
6. Third Biennial Update Report (BUR3) on 20 December 2021.
7. First Biennial Transparency Report (BTR1) on 24 December 2024 along with National Inventory Report (NIR), Common Reporting Tables (CRT) and CTF tables; including Technical Annex on REDD+.

The process, conducted under the Subsidiary Body for Implementation (SBI) at its 58th session in June 2023, confirms Indonesia's commitment to transparency, international dialogue, and continuous improvement in climate action reporting based on its Third Biennial Update Report (BUR).

The FSV highlights Indonesia's progress toward its Nationally Determined Contribution (NDC), which aims to reduce greenhouse gas emissions by 29% unconditionally and up to 41% conditionally by 2030, alongside its long-term objective of achieving net zero emissions by 2060 or sooner, with emissions peaking around 2030.

Key priorities emerging from the FSV include improving the completeness and accuracy of GHG inventory data, strengthening systems to track mitigation outcomes—particularly at the subnational level—building local institutional capacity, accelerating renewable energy deployment, and preparing for reporting under the Enhanced Transparency Framework (ETF) of the Paris Agreement.

The BTR2 is expected to be finalized and submitted to the UNFCCC by 31 December 2026 and the combined BTR3 is expected to be finalized and submitted to the UNFCCC by 31 December 2028.

ENABLING ACTIVITY COMPONENTS

1. Development of Indonesia's Second Biennial Transparency Report (BTR2)

GEF Enabling Activity Financing (\$): 260,000.00

Outcome:

1.1. National inventory report of anthropogenic emissions by sources and removals by sinks of greenhouse gases updated to 2024.

Output:

1.1.1. National Inventory Report of anthropogenic emissions by sources and removals by sinks of greenhouse gases updated to 2024, for the sectors of Energy, Industrial Processes and Product Use (IPPU), Agriculture,

Forestry and Other Land Use (AFOLU) and Waste using 2019 Refinement to the 2006 Intergovernmental Panel on Climate Change (IPCC) Guidelines for National Greenhouse Gas Inventories.

1. Development of Indonesia's Second Biennial Transparency Report (BTR2)

GEF Enabling Activity Financing (\$): 120,000.00

Outcome:

1.2. Progress made in implementing and achieving the NDC under Article 4 of the PA compiled and the progress in the achievement of the NDC presented.

Output:

1.2.1. Information necessary including indicators, to track progress made in implementing and achieving the Nationally Determined Contribution (NDC) up to 2024 provided, including estimates of emissions avoided.

1. Development of Indonesia's Second Biennial Transparency Report (BTR2)

GEF Enabling Activity Financing (\$): 100,000.00

Outcome:

1.3. Climate change impacts and adaptation under Article 7 of the Paris Agreement compiled and presented.

Output:

1.3.1. Information related to climate change impacts and adaptation up to 2024 provided.

1. Development of Indonesia's Second Biennial Transparency Report (BTR2)

GEF Enabling Activity Financing (\$): 30,000.00

Outcome:

1.4. Financial, technology development and transfer and capacity-building support provided & mobilised, and needed & received under Articles 9–11 of the Paris Agreement compiled and presented

Output:

1.4.1. Information on financial, technology development and transfer and capacity-building support provided & mobilized and needed & received up to 2024 provided, areas of improvement and other relevant information, including gender inclusion described.

1. Development of Indonesia's Second Biennial Transparency Report (BTR2)

GEF Enabling Activity Financing (\$): 30,000.00

Outcome:

1.5. Compilation and submission of the BTR2 to the UNFCCC enhancing national capacity for transparent climate reporting and international cooperation.

Output:

1.5.1. BTR2 compiled, adopted in a transparent and participatory process and submitted to UNFCCC by December 2026

2. Development of Indonesia's Third Biennial Transparency (BTR3)

GEF Enabling Activity Financing (\$): 260,000.00

Outcome:

2.1. National inventory report of anthropogenic emissions by sources and removals by sinks of greenhouse gases updated to 2026.

Output:

2.1.1. National Inventory Report of anthropogenic emissions by sources and removals by sinks of greenhouse gases updated to 2026 for the sectors of Energy, IPPU, AFOLU and Waste, using 2019 Refinement to the 2006 IPCC Guidelines for National Greenhouse Gas Inventories.

2. Development of Indonesia's Third Biennial Transparency (BTR3)

GEF Enabling Activity Financing (\$): 120,000.00

Outcome:

2.2. Progress made in implementing and achieving nationally determined contributions (NDC) under Article 4 of the Paris Agreement compiled and the progress in the achievement of the NDC presented.

Output:

2.2.1. Information, including indicators, necessary to track progress made in implementing and achieving the NDC up to 2026 provided, including estimates of emissions avoided.

2. Development of Indonesia's Third Biennial Transparency (BTR3)

GEF Enabling Activity Financing (\$): 100,000.00

Outcome:

2.3. Climate change impacts and adaptation under Article 7 of the Paris Agreement compiled and presented.

Output:

2.3.1. Information related to climate change impacts and adaptation up to 2026 provided and Adaptation Communication as component of the BTR3 prepared.

2. Development of Indonesia's Third Biennial Transparency (BTR3)

GEF Enabling Activity Financing (\$): 30,000.00

Outcome:

2.4. Financial, technology development and transfer and capacity-building support provided & mobilised, and needed & received under Articles 9–11 of the Paris Agreement compiled and presented

Output:

2.4.1. Information on financial, technology development and transfer and capacity-building support provided & mobilized and needed & received up to 2026 provided with areas of improvement and other relevant information, including gender described. Information on research, systemic observation, education, training, public awareness and gender provided, in accordance with applicable guidelines in 17/CP.8 and 6/CP.25.

2. Development of Indonesia's Third Biennial Transparency (BTR3)

GEF Enabling Activity Financing (\$): 30,000.00

Outcome:

2.5. Compilation and submission of the BTR3 the UNFCCC enhancing national capacity for transparent climate reporting and international cooperation.

Output:

2.5.1 BTR3 compiled, adopted in a transparent and participatory process and submitted to UNFCCC by December 2028

M&E

GEF Enabling Activity Financing (\$): 20,000.00

Outcome:

3.1 Project is effectively monitored and evaluated.

Output:

3.1.1. Monitoring and evaluation products delivered in line with the M&E plan:

- Inception workshop organized, and Inception Report compiled.

- Project annual financial and progress reports and Annual Status Surveys prepared.
- End of project report including lessons learnt and recommendations for next BTR/NC work compiled.

Component Balances

Project Components	GEF Enabling Activity Financing (\$)
1. Development of Indonesia's Second Biennial Transparency Report (BTR2)	260,000.00
1. Development of Indonesia's Second Biennial Transparency Report (BTR2)	120,000.00
1. Development of Indonesia's Second Biennial Transparency Report (BTR2)	100,000.00
1. Development of Indonesia's Second Biennial Transparency Report (BTR2)	30,000.00
1. Development of Indonesia's Second Biennial Transparency Report (BTR2)	30,000.00
2. Development of Indonesia's Third Biennial Transparency (BTR3)	260,000.00
2. Development of Indonesia's Third Biennial Transparency (BTR3)	120,000.00
2. Development of Indonesia's Third Biennial Transparency (BTR3)	100,000.00
2. Development of Indonesia's Third Biennial Transparency (BTR3)	30,000.00
2. Development of Indonesia's Third Biennial Transparency (BTR3)	30,000.00
M&E	20,000.00
Subtotal	1,100,000.00
Project Management Cost	100,000.00
Total Enabling Activity Cost	1,200,000.00

Please provide justification

SECTION 2: ENABLING ACTIVITY SUPPORTING INFORMATION

C. Eligibility Criteria

Please provide eligibility information for this enabling activity.

Indonesia ratified the United Nations Framework Convention on Climate Change (UNFCCC) in 1994 following its adoption in 1992. Indonesia signed Kyoto Protocol on 13 July 1998 and ratified it on 3 December 2004. Indonesia signed the Paris Agreement in 2016 through Law No. 16/2016. As Party to the Convention, Indonesia has the obligation to implement decisions of the Conference of the Parties (COP) regarding the implementation of policies and measures to adapt to, and mitigate climate change, thereby contributing to the attainment of the objective of the Convention.

To date, Indonesia has prepared and submitted three National Communications (NCs): the Initial National Communication (NC1) in 1999, the Second National Communication (NC2) in 2011, and the Third National Communication (NC3) in 2018. Indonesia has also prepared and submitted three Biennial Update Reports (BURs): the First Biennial Update Report (BUR1) in 2016 ; the Second Biennial Update Report (BUR2) in 2018; and the Third Biennial Update Report (BUR3) in 2021 and also First Biennial Transparency Report (BTR1) with National Inventory Document (NID) in 2024.

The preparation processes of the NCs, BURs, and BTR1 have contributed to a range of institutional and technical achievements, including:

- Strengthened institutional arrangements for climate reporting, including the establishment of dedicated working groups across ministries and sectoral agencies.
- Development of national MRV systems, such as SIGNSMART (greenhouse gas (GHG) Inventory System), SRN PPI (Climate Change National Registry System), SIDIK (Climate Village Information System), SiPongi (Area and Forest Fire Control Management System), ProKlim (Climate Communities), Climate House
- Increased technical capacity within line ministries and subnational agencies to compile GHG inventories using IPCC guidelines.
- Adoption of sectoral MRV guidelines and training modules for energy, waste, AFOLU, and IPPU sectors.
- Improved data quality and consistency using standardized templates and archiving mechanisms.
- Enhanced stakeholder engagement, including consultations with civil society, private sector, and academia in the report preparation process.
- Initial steps towards gender mainstreaming and social inclusion in climate reporting, although integration remains limited and needs further strengthening.

This project will build on findings and recommendations from previous NC/BUR/BTR work as well as recommendations resulting from the ICA (International Consultation and Analysis) process for BUR, TER and FMCP for BTR.

Indonesia submitted its First Biennial Transparency Report to the UNFCCC on 24 December 2024 reaffirming its commitment to ambitious climate action, transparency and collaborative leadership under the principles of equity, transparency and environmental integrity for the benefit of current and future generations. This submission marks a significant milestone in aligning national efforts with the ETF of the PA, the identification of opportunities for improvement, and the facilitation of decision-making regarding climate action. Following submission of Indonesia BTR1, it will be key to reference to the improvements plans and Technical Expert Review (TER); Facilitative, Multilateral Consideration of Progress (FMCP). The

information submitted by the Party under Article 13, paragraphs 7 and 9 of the Paris Agreement shall undergo a TER in accordance with chapter VII of the MPGs. The TER will be implemented in a facilitative, non-intrusive, non-punitive manner, be respectful of national sovereignty and avoid placing undue burden on Parties. The TER must also pay particular attention to the respective national capabilities and circumstances of developing country Parties. Likewise, the ETF includes an FMCP with respect to each Party's efforts under Article 9 of the Paris Agreement and its respective implementation and achievement of its NDC. The FMCP will be conducted in accordance with chapter VIII of the MPGs.

Lessons learned from the preparation and submission of BTR1 highlight both important achievements and critical opportunities for strengthening Indonesia's transparency system. The successful delivery of BTR1 demonstrated the government's commitment and laid a foundation for future reports. At the same time, it revealed key capacity-building needs, including limited technical expertise in advanced IPCC methodologies, uncertainty analysis, and QA/QC procedures, alongside fragmented data systems and ad hoc institutional arrangements. These gaps created inefficiencies and increased reliance on external expertise, underscoring the urgency of strengthening national systems and human capital.

The BTR1 process also underscored the importance of building robust, integrated systems for NDC and adaptation tracking. Methodological inconsistencies across sectors, limited availability of country-specific emission factors, and insufficient detail on adaptation actions constrained the quality of reporting. Similarly, fragmented climate finance data and weak coordination mechanisms hindered comprehensive reporting on support received and provided. These constraints point to the need for stronger institutionalized coordination, standardized methodologies, and enhanced technical tools to enable timely, transparent, and high-quality ETF reporting.

The current EA project is designed precisely to address these needs in a systematic and sustainable manner. It will institutionalize coordination frameworks, establish SOPs, and build long-term technical capacity across key agencies. Investments will focus on developing country-specific emission factors, strengthening adaptation and NDC tracking frameworks, and enhancing systems for climate finance and support reporting. By transforming the lessons of BTR1 into concrete capacity-building interventions, the project will ensure more efficient processes, timely delivery of outputs, and higher-quality reporting for BTR2 and BTR3—solidifying Indonesia's leadership in meeting its Paris Agreement commitments.

Stakeholder engagement plan (SEP):

Stakeholder involvement and consultation processes are critical to the success of the project. An effective engagement of key stakeholders has been done during project preparation and is envisaged during implementation, monitoring and evaluation to enhance ownership of the NC and BTR processes and makes these reports more responsive to national needs. The SEP intends to strengthen stakeholder's participation to collectively participate in addressing climate change issues and challenges related to the identification and prioritization of activity data, mitigation and adaptation options and indicators as well as support and capacity building.

Grievance Redress Mechanism (GRM): In line with UNDP's commitment to accountability and transparency, the Project will establish and maintain a project-level GRM through which individuals and communities may submit questions, feedback, concerns or complaints related to the Project and its potential or actual impacts. The GRM will be accessible and inclusive (including for vulnerable groups), free of charge, and will allow for confidential submissions and protection against retaliation. Stakeholders will also be informed of and may use UNDP's Accountability Mechanism (including SRM/SECU) and/or the UNDP Country Office SES Focal Point as additional channels where appropriate.

Principles of Engagement:

Inclusivity: Engage a broad range of stakeholders, including marginalized and vulnerable groups.

Gender Sensitivity: Integrate gender perspectives at all stages of engagement.

Transparency: Foster open communication and access to information.

Equity: Ensure fair representation and participation opportunities.

Capacity Building: Empower all stakeholders with knowledge and tools to participate meaningfully.

Stakeholders mapping: The stakeholders of the project come from a wide range of backgrounds, including line ministries and agencies, local communities, local authorities and non-governmental organizations (NGOs), mass-media, research institutions, private sector, and international organizations, with particular emphasis on related sectors.

Stakeholder	Role in the project	Means of Engagement
Governmental Institutions		
Ministry of Environment/Environmental Control Agency (MoE)	National focal point for various UN Conventions (Stockholm, Minamata, Paris Agreement)	Led the development of communications to the UNFCCC, including the NDC, National Communications (NatComm), and Biennial Transparency Report (BTR)
Ministry of Energy and Mineral Resources (MEMR)	National focal point for energy sector	Conducted planning, data collection, development, and implementation of GHG inventory, climate mitigation and adaptation actions (NDC), and carbon pricing in the energy sector
Ministry of Forestry (MoF)	National focal point for land-based sector	Conducted planning, data collection, development, and implementation of GHG inventory, climate mitigation and adaptation actions (NDC), and carbon pricing in the land-based sector
Ministry of Agriculture (MoA)	National focal point for agriculture sector	Conducted planning, data collection, development, and implementation of GHG inventory, climate mitigation and adaptation actions (NDC), and carbon pricing in the agriculture sector
Ministry of Industry (MoI)	National focal point for industrial process and product use (IPPU) sector	Conducted planning, data collection, development, and implementation of GHG inventory, climate mitigation and adaptation actions (NDC),

		and carbon pricing in the IPPU sector
Ministry of Transportation (MoT)	National focal point for transportation sector	Conducted planning, data collection, development, and implementation of GHG inventory, climate mitigation and adaptation actions (NDC), and carbon pricing in the transportation sector
Ministry of Public Works (MoPW)	National focal point for waste sector	Conducted planning, data collection, development, and implementation of GHG inventory, climate mitigation and adaptation actions (NDC), and carbon pricing in the waste sector
Ministry of Marine Affairs and Fisheries (MoMAF)	National focal point for marine and fisheries sector	Conducted planning, data collection, development, and implementation of GHG inventory, climate mitigation and adaptation actions (NDC), and carbon pricing in the marine and fisheries sector
Ministry of Finance (MoF)	National focal point for climate finance, supporting NDC implementation, NEK policy, and BTR reporting on fiscal instruments and expenditures	Providing data on climate budget tagging, fiscal instruments, carbon pricing policies, and participating in inter-ministerial coordination
National Development Planning Agency (Bappenas)	National coordinator for development planning alignment with climate targets, ensuring NDC, BTR, and Carbon Pricing are integrated into national and regional development strategies	Leads policy alignment, development low carbon and climate resilience pathways, and participates in inter-ministerial coordination
Ministry of Home Affairs (MoHA)	Coordinates and oversees the integration of climate actions (NDC and Carbon Pricing) into subnational development planning and governance	Facilitates local government alignment with national targets through policy directives, monitoring regional climate action), and supporting data reporting for BTR
National Research and Innovation Agency (BRIN)	Coordinate and oversee integration of climate actions, provide research and data for national GHG inventories, mitigation scenarios, and adaptation measures.	Coordinate through joint research programs, technical workshops, and policy briefs.
Ministry of Health	Provide health-related data on climate vulnerability and adaptation measures,	Collaborate through data-sharing mechanisms, technical

	particularly for the health sector's contribution to BTR.	advisory groups, and joint assessments.
National Agency for Meteorology (BMKG)	Provide climate data, weather forecasting, and modeling inputs for GHG inventory and mitigation analysis.	Regular data sharing, technical working groups, and advisory sessions.
Statistics Indonesia (BPS)	Supply official statistics on energy, industry, agriculture, and waste, supporting BTR data collection and reporting.	Data sharing agreements, technical consultations, and alignment of statistical frameworks with BTR needs.
National Agency for Disaster Management (BNPB)	Provide information on disaster risks, climate-induced events, and adaptation actions to be integrated into BTR adaptation sections.	Data sharing, joint disaster risk and adaptation analysis, and policy integration workshops.
Geospatial Information Agency (BIG)	Provide geospatial data and mapping tools for emissions sources, sinks, and land-use change analysis.	GIS platform integration and technical mapping support.
Local/Provincial Government	Focal points for climate change initiatives, responsible for local data collection and integrating subnational actions into BTR	Lead planning, data collection, development, and implementation of GHG inventory, NDC actions, and carbon pricing across all sectors at regional levels.
Academia		
Sumatera region (University of North Sumatera, Sriwijaya University, Lampung University)	Support research and provide regional data for GHG inventories as well as mitigation and adaptation assessments, including studies on local emission factors in Sumatera region.	Collaborative research programs with local governments and agencies, technical workshops and policy dialogues, as well as data validation sessions and capacity-building initiatives that enhance subnational contributions to the BTR.
Java Region (Bandung Institute of Technology, Bogor Agriculture University, Gajah Mada University, Padjajaran University)	Contribute advanced technical expertise in the energy, IPPU, waste management, and LULUCF sectors.	Technical consultations with ministries and project teams, active participation in policy roundtables and BTR discussions, and joint capacity-building and training sessions.
Bali and Nusa Tenggara Region (Udayana University)	Support research and provide regional data for GHG inventories as well as mitigation and adaptation assessments, including studies on local emission factors in Bali & Nusra region.	Joint research and knowledge-sharing with local authorities, supported by sector-specific workshops and technical training that strengthen the data and analysis needed for the BTR.
Kalimantan Region (Mulawarman University)	Support research and provide regional data for GHG inventories as well as	Joint research and knowledge-sharing with local authorities,

	mitigation and adaptation assessments, including studies on local emission factors in Kalimantan region.	supported by sector-specific workshops and technical training that strengthen the data and analysis needed for the BTR.
Sulawesi and Maluku Region (Hasanudin University)	Support research and provide regional data for GHG inventories as well as mitigation and adaptation assessments, including studies on local emission factors in Sulawesi and Maluku region	Community-based research, stakeholder consultations, and capacity-building programs that ensure regional perspectives and data are integrated into the BTR framework.
Papua Region (Cendana University)	Support research and provide regional data for GHG inventories as well as mitigation and adaptation assessments, including studies on local emission factors in Papua region	Community-based research, stakeholder consultations, and capacity-building programs that ensure regional perspectives and data are integrated into the BTR framework.
Private sector		
State-Owned Electricity Utility (PLN)	As the primary actor in the national power sector, PLN plays a central role in GHG emissions reporting, mitigation efforts, carbon pricing, and the implementation of renewable energy strategies.	Collaboration through structured data-sharing agreements, participation in national MRV frameworks, and involvement in technical consultations and capacity-building programs to support the transition towards low-carbon power generation
State Oil and Gas Company of Indonesia (Pertamina)	As the main actor in the oil and gas sector, plays a critical role in GHG emissions reporting, mitigation strategies, and energy transition initiatives. The company contributes key data on upstream and downstream oil and gas operations, refining, and fuel distribution, which are essential for GHG inventories and sectoral mitigation planning under the BTR framework.	Engagement takes place through data-sharing agreements, public-private dialogues, technical consultations on emission reductions, and participation in capacity-building programs that align with national climate transparency and mitigation targets.
State Cement Company (Semen Indonesia)	Provide critical data on clinker production, energy use, and process emissions while supporting the development of emission reduction technologies, such as alternative fuels, low-carbon cement production, and carbon capture solutions.	Collaboration includes technical consultations, data validation sessions, joint studies on industrial decarbonization pathways, and participation in capacity-building workshops to enhance MRV and reporting for the BTR framework.

State Fertilizer Company (Pupuk Indonesia)	Providing GHG-related data from the fertilizer industry, particularly on emissions from ammonia and urea production.	Facilitated through structured reporting mechanisms, technical working groups, and workshops on emission reduction technologies, ensuring alignment with national climate transparency and mitigation strategies under the BTR framework.
NGOs, CSOs, Local & Adat Communities (Masyarakat Hukum Adat)		
Think tank, NGOs, and CSOs Local and Adat Communities (Masyarakat Hukum Adat)	Provide publication of knowledge products, public outreach, and awareness campaigns, as well as through active participation in multi-stakeholder consultations, technical dialogues, and capacity-building initiatives that enhance the credibility and effectiveness of the BTR processes.	Engages through technical consultations, policy dialogues, and collaborative studies.

The project will identify synergies and will be implemented in close collaboration and coordination with other ongoing initiatives and projects to increase cost-effectiveness and enhance consistencies with various national development priorities and programmes undertaken at national and local levels.

Complementary Projects

Project Name	Timeframe	Baseline Information	Linkages with BTR2 – BTR3
GEF-UNDP CBIT Indonesia Phase I	2021 - 2025	Laid the foundation for Indonesia’s transparency system, including MRV guidelines, institutional mapping, stakeholder engagement models, and initial integration of subnational actors into data systems and reporting structures	Informed BTR1 structure and institutional coordination; provided initial data management frameworks used in BTR2&3
GEF-UNDP Indonesia Fourth National Communication (NC4) and First Biennial Transparency Report (BTR1)	2021 - 2025	This project directly supported the preparation of Indonesia’s first Biennial Transparency Report (BTR1), including the development of NID, CRT piloting, and stakeholder consultations. It also delivered NC4 and BUR4 under the same enabling activity.	Forms the backbone of BTR1 submission and provides the institutional, technical, and procedural basis for BTR2. Gaps identified in this project inform improvement planning and capacity-building activities under the current GEF EA.
GCF-UNDP RBP for REDD+	2020 - 2025	Provides results-based payments for emission reductions from the forest sector based on UNFCCC-verified REDD+ technical annex. Institutionalizes REDD+ MRV, safeguards, and benefit-sharing mechanisms.	Directly supports AFOLU section of BTRs by providing verified emissions reductions, REDD+ MRV protocols, and safeguards reporting. Outputs feed into NID, REDD+ annex, and adaptation co-benefits in BTR2.
World Bank – Partnership Market Implementation	2024 - 2026	Strengthening the SRN and MRV system, enhancing carbon governance, and improving cross-sectoral coordination.	Providing reliable baseline data, ensuring transparent carbon pricing, and harmonizing mitigation actions across sectors
World Bank - Forest Carbon Partnership Facility (FCPF)	2020 – 2025	Provides jurisdictional REDD+ emission reductions baseline, with verified data under ERPA and established safeguards and benefit-sharing mechanisms.	Serves as a key reference for REDD+ Annex in BTRs, particularly for reporting jurisdictional emission reductions, safeguards implementation, and benefit-sharing arrangements under the ETF
World Bank – BioCarbon Fund Initiative for Sustainable Forest Landscapes (BioCF-ISFL)	2021 - 2026	Provides jurisdictional REDD+ emission reductions baseline, with verified data under ERPA and established safeguards and benefit-sharing mechanisms.	Serves as a key reference for REDD+ Annex in BTRs, particularly for reporting jurisdictional emission reductions, safeguards implementation, and benefit-sharing arrangements under the ETF
World Bank – Mangroves for Coastal Resilience Project (M4CR)	2022 - 2027	Robust SRN and MRV systems by integrating reference emission levels, and long-term monitoring of mangrove restoration.	Ensures that emission reductions and carbon sequestration from mangrove conservation are transparently tracked and verifiable, enabling their inclusion in BTR.
JICA - Technical Cooperation Project Climate Change Mitigation Project in LULUCF Sector	2024 - 2027	Strengthens GHG inventory and MRV systems, directly improving BTR reporting especially for LULUCF sector.	Directly supports BTR by enhancing MRV systems especially for land use.
GIZ Climate and Biodiversity Hub	2021 - 2025	Supported ETF-aligned technical enhancements in Indonesia, including improved transparency tools, data systems, and capacity in NDC and inventory reporting	Contributed to the methodological refinement essential for preparing and validating BTR2/3 and ensuring consistency with BTR1 lessons.

Engagement Activities:

- Inception workshop to discuss conceptual framework and design for each report/area of work; and to highlight any prevailing challenges to data acquisition and sharing, monitoring assessment and reporting.
- Stakeholder consultations workshops to engage stakeholders and ensure their continuous involvement in the reporting process.
- Capacity building workshops on the thematic areas of the ETF, BTRs and NCs.
- Individual meetings of thematic working groups with sector representatives.
- Group discussions to solicit ideas, create synergies and opportunities for networking, knowledge sharing and joint actions.
- Validation workshops to discuss results and validate accuracy of the analyses and assure quality of the results.
- Final dissemination workshop to discuss findings, raise awareness and reinforce collaboration and networking.

The stakeholder engagement plan will be implemented in conjunction with the Gender Action Plan thus ensuring that gender equality considerations are firmly integrated throughout project interactions with stakeholders.

Gender analysis and action plan:

National reporting processes can be a meaningful entry point for training, awareness-raising, and capacity-building efforts to ensure women's equal engagement in and benefit from climate change action. Preparation of reports can also influence other, ongoing climate change planning and policymaking processes.

Previous NC/BUR/BTR projects addressed Gender mainstreaming into national reporting process in the following ways:

- **National Communication (NC)**

Gender integration in Indonesia's National Communications (NC1–NC4) has shown a progressive evolution towards more inclusive climate reporting. The First National Communication did not address gender considerations, largely due to the absence of sex-disaggregated data and limited awareness of gender as a cross-cutting dimension in climate policy. By the Second and Third National Communications, initial efforts to mainstream gender were introduced through increased participation of women in stakeholder consultations and the recognition of their roles in adaptation and mitigation planning, although the application of gender-sensitive indicators and data remained limited. The Fourth National Communication (NC4, currently under development) is taking a more structured approach by explicitly recognizing gender as a cross-cutting issue, aiming to incorporate sex-disaggregated data, conduct gender analysis and vulnerability mapping, and adopt a dedicated Gender Action Plan to ensure that women's roles, needs, and contributions are reflected in both mitigation and adaptation components.

- **Biennial Update Reports (BUR)**

Indonesia's Biennial Update Reports (BURs) have gradually incorporated gender considerations, though the integration has been largely qualitative and remains at an early stage. BUR1 marked the initial recognition of the importance of stakeholder inclusivity, with women's participation being encouraged in consultation processes across ministries, local governments, and civil society organizations. BUR2 built on this by enhancing women's representation in technical discussions and workshops, though sex-disaggregated data and gender-sensitive indicators were not systematically included. BUR3 introduced more awareness of the gender dimension within adaptation planning, reflecting early efforts to align climate reporting with national gender policies. By BUR4, consultations and stakeholder engagement saw a more deliberate inclusion of women's groups and gender advocates, yet the reporting of quantitative, gender-disaggregated data remained limited, underscoring the need for a more structured gender mainstreaming approach in subsequent transparency frameworks.

- **Nationally Determined Contribution (NDC)**

Indonesia's Nationally Determined Contribution (NDC) has progressively integrated gender equality as a cross-cutting priority in its climate policy framework. While the First NDC made only limited references to gender, primarily in the context of social inclusion and stakeholder engagement, the Updated and Enhanced NDC took a significant step forward by explicitly positioning gender equality and women's empowerment as guiding principles in both mitigation and adaptation actions. The ENDC highlights the importance of strengthening women's roles as agents of change, particularly in sectors such as forestry, energy, agriculture,

and disaster risk reduction. It aligns with Indonesia's National Mid-Term Development Plan (RPJMN 2020–2024), which emphasizes gender mainstreaming across climate-related programs and policies. The ENDC also commits to mapping gender issues across all climate sectors and improving women's participation and leadership in policy development, capacity-building, and implementation. While these advancements demonstrate strong policy intent, there is still a need to translate these commitments into measurable gender indicators and systematically integrate sex-disaggregated data within the NDC's monitoring and evaluation framework.

- **Biennial Transparency Report (BTR)**

The preparation of BTR1 marks a pivotal step in fully integrating gender considerations into Indonesia's climate transparency framework. Building on the lessons from NCs and BURs, BTR1 systematically apply the Gender-Responsive National Communications Toolkit to ensure that gender equality is mainstreamed across all components of reporting. This includes conducting a dedicated gender analysis in priority sectors, incorporating sex-disaggregated data (where available) on education, employment, and sectoral participation, and mapping gender-differentiated vulnerabilities to climate impacts. BTR1 also emphasize the active engagement of women's organizations, CSOs, and female experts in consultations and technical discussions. By aligning with national gender policies and indicators, BTR1 aims to produce a more inclusive and evidence-based report that highlights women's roles as agents of change in both mitigation and adaptation measures.

This project will apply the “CBIT- GSP Transparency Gender Responsive Toolkit” and follow [the GEF SEC's policy on Gender Equality\[1\]](#)¹ and [Guidance to advance Gender Equality in GEF Projects and Programs\[2\]](#)².

An initial stocktaking and gender analysis across all areas – and inclusion of stakeholders who understand gender issues in relation to their sectors – will be conducted to assess and understand where deeper analysis and action is required. The areas where data and information on gender and climate change is not available will be identified with priorities and steps to fill gaps.

The update of the national circumstances under each component will disaggregate relevant data by sex with the objective to better understand how the social and economic differences between men and women affect the capability of dealing with mitigating and adapting to climate change. Seeing that women are being acknowledged as agents of change who make important contributions to climate change adaptation and mitigation, a gender perspective will be incorporated in the climate change impacts and adaptation and NDC progress assessment and preparation of mitigation actions.

For all analysis included in the project, sex-disaggregated data from national statistical agency and international approved sources for the following topics will be included to summarize the status of women and men nationally and by sector: education level, employment by economy sectors and other sectors identified as GHG emitters, gender pay gap (general and by sectors), leadership, economic empowerment, and health, among others.

The Project will provide capacity-building in relation to NC/BTR purpose and content, gender issues in environment and their role in the NC/BTR processes if necessary.

The project will encourage the active participation of women and men in decision-making processes. Gender balance will be considered in project management structures and capacity building actions (trainings, workshops).

Objective	Indicator	Baseline	Target	Timeline	Responsible Agencies
Integrate gender-specific indicators into GHG inventory, MRV, and sectoral reporting	# of gender-sensitive indicators adopted	8 indicators developed during NC4 preparation	10 indicators	Year 1	MoE, MoWECP, UNDP
Ensure meaningful participation of women in consultations and working groups	% of women in working groups and consultations	40 - 45% women's participation recorded during NC4 and BUR4 consultations	50% of members are women	Years 1,2 and 3	MoE, MoWECP, CSOs

[1] http://www.thegef.org/sites/default/files/council-meeting-documents/EN_GEF.C.53.04_Gender_Policy.pdf

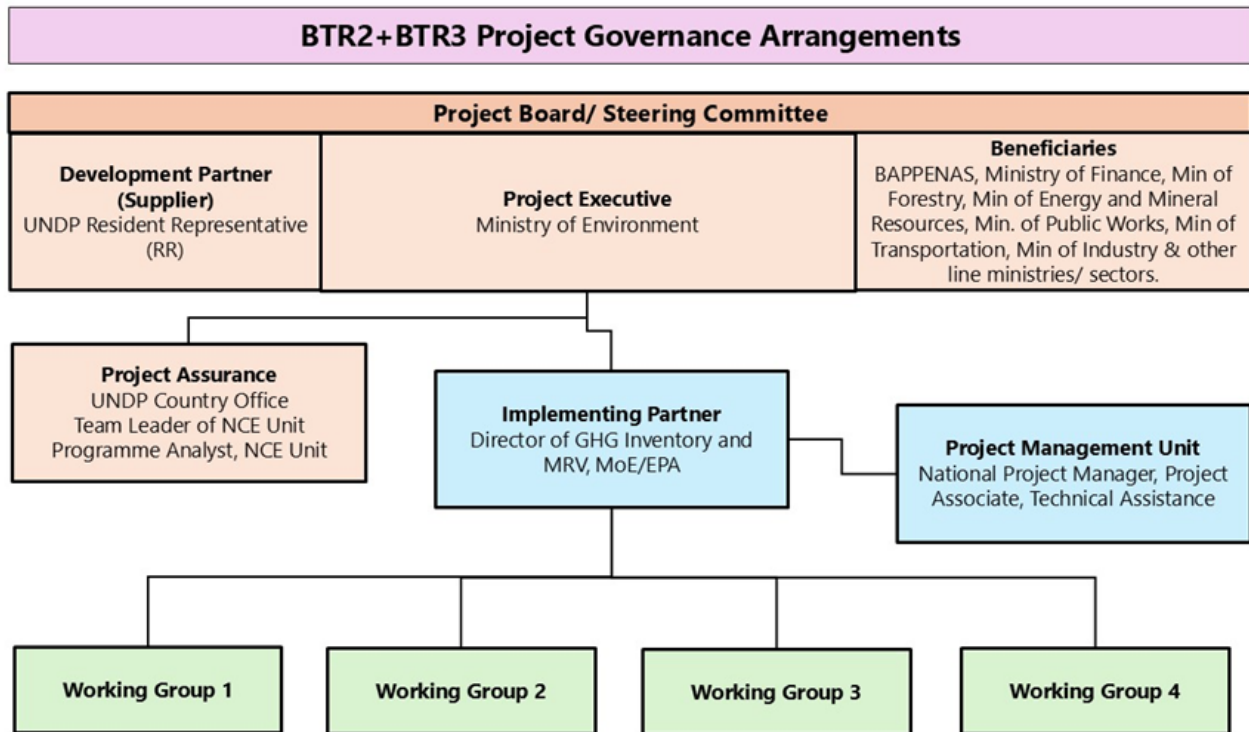
[2] http://www.thegef.org/sites/default/files/council-meeting-documents/EN_GEF.C.54.Inf_.05_Guidance_Gender_0.pdf

D. Institutional Framework

Describe the institutional arrangements for implementation of the enabling activity.

Project Execution:

The project will be executed under the National Implementation (NIM) modality with the Ministry of Environment as the Executing Entity.



The Executing Entity is responsible for executing this project. Specific tasks include:

- Project planning, coordination, management, monitoring, evaluation and reporting. This includes providing all required information and data necessary for timely, comprehensive and evidence-based project reporting, including results and financial data, as necessary. The Executing Entity will strive to ensure project-level M&E is undertaken by national institutes and is aligned with national systems so that the data used and generated by the project supports national systems.
- Overseeing the management of project risks as included in this project document and new risks that may emerge during project implementation.
- Procurement of goods and services, including human resources.
- Financial management, including overseeing financial expenditures against project budgets.
- Approving and signing the multiyear workplan.
- Approving and signing the combined delivery report at the end of the year; and,
- Signing the financial report or the funding authorization and certificate of expenditures.

The Project Implementation Unit will be the executing and operational unit that will coordinate and implement the project activities for the preparation of the BTR2 and BTR3. The Government through MoE will provide in-kind support to the project implementation. This contribution will include the provision of office space, and the use of government equipment and logistical resources necessary for project execution.

Day-to-day management of the project will be assured by the project manager, who will be responsible for setting up the project team, while the national focal point will monitor and verify the project results.

Project Oversight – Project Board:

The Project Board will be the highest policy-level body, which will provide support and guidance to the implementation of the project and ensure that the project findings are disseminated to, and validated by, all relevant stakeholders in Indonesia. To ensure UNDP's ultimate accountability, Project Board decisions should be made in accordance with standards that shall ensure management for development results, best value money, fairness, integrity, transparency, and effective international competition.

The two main (mandatory) roles of the Project Board are as follows:

(1) High-level oversight of the execution of the project by the Executing Entity (as explained in the "Provide Oversight" section of the UNDP Programme and Operations Policies and Procedures). This is the primary function of the project board and includes annual (and as-needed) assessments of any major risks to the project, and decisions/agreements on any management actions or remedial measures to address them effectively. The PSC reviews evidence of project performance based on monitoring, evaluation and reporting, including progress reports, evaluations, risk logs and the combined delivery report. The PSC is responsible for taking corrective action as needed to ensure the project achieves the desired results.

(2) Approval of strategic project execution decisions of the Executing Entity with a view to assess and manage risks, monitor and ensure the overall achievement of projected results and impacts and ensure long term sustainability of project execution decisions of the Executing Entity (as explained in the "Manage Change" section of the UNDP POPP).

UNDP is accountable to the GEF for the implementation of this project. This includes overseeing project execution undertaken by the Executing Entity to ensure that the project is being carried out in accordance with UNDP and GEF policies and procedures. UNDP will exercise its accountability and oversight through its representation (by the UNDP CO Resident Representative) in the Project Board and the Project Assurance function (UNDP CO Programming Team). Decisions at the project board will be made by consensus. In case consensus cannot be reached within the Board, the UNDP representative on the board will mediate to find consensus and, if this cannot be found, will take the final decision to ensure project implementation is not unduly delayed.

The institutional structure of the project will be based on the existing institutional arrangements. Preparation processes of the BTR2 and BTR3 will be closely coordinated by the UNFCCC National Focal Point in Indonesia.

The following thematic working groups will be formed to assist with the preparation of various components of the NC and BTR: (i) National Greenhouse Gas Inventory, (ii) Tracking the progress of NDC implementation and achievement, (iii) Climate Change Impacts and Adaptation, (iv) Support needed and received and other information. Each thematic working group will comprise of a number of experts drawing both from public and private sectors, communities, and NGOs, as appropriate.

E. Monitoring and Evaluation Plan

Describe the budgeted M&E plan.

The project monitoring and evaluation will be carried out according to UNDP and GEF programming policies and procedures.

Inception Workshop and Report: A project Inception Workshop will be held within 2 months from the First disbursement date, with the aim to:

- a. Familiarize key stakeholders with the detailed project strategy and discuss any changes that may have taken place in the overall context since the project idea was initially conceptualized that may influence its strategy and implementation.
- b. Discuss the roles and responsibilities of the project team, including reporting lines, stakeholder engagement strategies and conflict resolution mechanisms.
- c. Review the results framework and monitoring plan.
- d. Discuss reporting, monitoring and evaluation roles and responsibilities and finalize the M&E budget, if applicable; identify national/regional institutes to be involved in project-level M&E; discuss the role of the GEF OFP and other stakeholders in project-level M&E.
- e. Update and review responsibilities for monitoring project strategies, including the risk log; SESP report, Social and Environmental Management Framework (where relevant) and other safeguard requirements; project grievance mechanisms; gender strategy; knowledge management strategy, and other relevant management strategies.
- f. Review financial reporting procedures and budget monitoring and other mandatory requirements and agree on the arrangements for the annual audit.
- g. Plan and schedule Project Board meetings and finalize the first-year annual work plan. Finalize the TOR of the Project Board.
- h. Formally launch the Project.

The Project Manager will prepare the inception report no later than one month after the Inception Workshop. The Inception Report will be prepared in English, duly signed by designated persons, cleared by the UNDP Country Office and the UNDP Climate Hub Regional Technical Adviser, and will be approved by the Project Board.

Annual progress: Status Survey Questionnaires to indicate progress and identify bottlenecks as well as technical support needs will be carried out once a year, in line with GEF and UNFCCC reporting requirements for NCs and BTRs. Within the third year of implementation, a mid-term workshop shall be held in order to assess the project implementation effectiveness with key stakeholders, in order to enable real co-management of project implementation.

Lessons learned and knowledge generation: Results from the project will be disseminated within and beyond the project intervention area through existing information sharing networks and forums. Lessons from previous BTR, NCs, BURs, and NDCs processes demonstrate gradual progress in gender integration, while highlighting the need for sex-disaggregated data, structured methodologies, and closer alignment with national gender policies. To address these gaps, the project will apply a Gender Action Plan, conduct sectoral gender analysis, integrate sex-disaggregated data into reporting, and provide targeted capacity-building to strengthen gender mainstreaming throughout the BTR2 and BTR3 processes, consistent with GEF gender policies. The project will actively participate in relevant scientific, policy, and technical networks, and will document, analyze, and disseminate lessons learned and best practices to inform future transparency initiatives. Knowledge exchange will be fostered with similar projects at national, regional, and global levels to enhance peer learning and promote continuous improvement.

End of Project: Six months before the project ends, the project team will organize the end of project workshop to present the final results and the way forward (to agree on priorities, follow up projects and their implementation modality). During the last three months prior to the operational closure, the project team will prepare the EA Completion Memorandum. This comprehensive report (in English) will summarize the results achieved (objectives, outcomes, outputs), lessons learned, problems met and areas where results may not have been achieved. It will also lay out recommendations for any further steps that may need to be taken to ensure

sustainability and replicability of the project's results. The report and workshop will also document results related to gender equality and women's empowerment, including progress on gender mainstreaming, sex-disaggregated data use, and participation of women in project activities. The End of Project Report shall be discussed with the Project Board during an end-of-project review meeting to discuss lessons learned and opportunities for scaling up.

Monitoring and Evaluation Plan and Budget:		
GEF M&E Requirements	Indicative costs (US\$)	Time frame
Inception Workshop	12,000	Within 2 months from the date First Disbursement
Inception Report	None	Within 30 days after Inception Workshop
Monitoring of indicators in project results framework	None	Annually
Monitoring of Gender Action Plan, Knowledge Management (KM) Plan, Communication Plan and SESP	None	Annually
Supervision missions	None	Annually
EA Completion Memorandum	None	3 months before operational closure
Annual workshops to discuss project progress and results	8,000	Once a year
TOTAL indicative COST	20,000	

SECTION 3: INFORMATION TABLES

F. GEF Financing Resources Requested by Agency, Country and Programming of Funds

GEF Agency	Trust Fund	Country/ Regional/ Global	Focal Area	Programming of Funds	GEF Enabling Activity Financing (\$)	Agency Fee (\$)	Total (\$)
UNDP	GET	Indonesia	Climate Change	CC Set-Aside	1,200,000.00	114,000.00	1,314,000.00
Total GEF Resources					1,200,000.00	114,000.00	1,314,000.00

Sources of Funds for Country Star Allocation

GEF Agency	Trust Fund	Country/ Regional/ Global	Focal Area	Sources of Funds	Total(\$)
------------	------------	---------------------------	------------	------------------	-----------

Total GEF Resources	0.00
----------------------------	-------------

G. Rio Markers

Climate Change Mitigation	Climate Change Adaptation	Biodiversity	Desertification
Principal Objective 2	Significant Objective 1	No Contribution 0	No Contribution 0

H. Record of Endorsement of GEF Operational Focal Point(s) on Behalf of the Government(s):

Please attach the *Operational Focal Point endorsement letter(s)* with this template.

Name	Position	Ministry	Date (MM/DD/YYYY)
Erik Teguh Primiantoro	Senior Advisor to the Minister International Relations and Environmental Diplomacy and GEF Operational Focal Point	Ministry of Environment	9/12/2025

ANNEX A: RESPONSES TO STAKEHOLDER COMMENTS

Describe how the enabling activity has addressed comments from stakeholders, including Council Members, Convention Secretariats, and STAP (if applicable).

ANNEX B: PROJECT BUDGET TABLE

Attach the project budget table.

The Project Budget Table is attached.

Expenditure Category	Detailed Description	Component (USDeq.)						Responsible Entity
		Component 1	Component 2	Sub-Total	M&E	Project Management Cost (PMC)	Total (USDeq.)	
Equipment	Lump-sum annual cost for knowledge products, such as publications and equipment, to support coordination and dissemination of results for BTR2	5,000		5,000			5,000	(Executing Entity receiving funds from the GEF Agency)[1] MOE
Equipment	Lump-sum annual cost for knowledge products, such as publications and equipment, to support coordination and dissemination of results for BTR3		5,000	5,000			5,000	MOE

Expenditure Category	Detailed Description	Component (USDeq.)						Responsible Entity
		Component 1	Component 2	Sub-Total	M&E	Project Management Cost (PMC)	Total (USDeq.)	
Equipment	Procurement of computers, laptops, printers, and software for project staff and key institutions	10,000	10,000	10,000		20,000	40,000	(Executing Entity receiving funds from the GEF Agency)[1] MOE
Contractual services-Individual	National PM allocated under component 1, 2 and PMC Component 1 and 2 - (2,500* 48 months) PMC - (\$364.58*48 months)	60,000	60,000	120,000		17,500	137,500	MOE
Contractual services-Individual	Project Associate allocated under component 1,2 and PMC Component 1 and 2 - (\$1,500 x 48 months) PMC - (\$260.41 * 48 months)	36,000	36,000	72,000		12,500	84,500	MOE
Contractual services-Individual	Technical Assistant allocated under component 1,2 and PMC Component 1 and 2 - (\$ 1,000 x 48 months) PMC - (\$208.33*48 months)	24,000	24,000	48,000		10,000	58,000	MOE
Contractual services-Company	Consultancy firm to deliver advisory services, data collection, and sectoral analysis through experts specializing in AFOLU, Energy, Waste, and IPPU. The firm will assist in developing National Inventory Reports (NIRs) for BTR2	100,000		100,000			100,000	MOE
Contractual services-Company	Consultancy firm to develop a framework for tracking NDC-related activities and preparing technical annexes for REDD+ for BTR2	50,000		50,000			50,000	MOE
Contractual services-Company	Consultancy firm to provide targeted advisory services, data collection, and sectoral analysis led by experts for climate impact and adaptation activities for BTR2.	40,000		40,000			40,000	MOE
Contractual services-Company	Consultancy firm to provide targeted advisory services, sectoral analysis, and expert-led data collection, as well as support for conferences, workshops, training sessions, field visits, and monitoring activities related to financial support, technology development and transfer, capacity building, and support needed, received, and mobilized for the BTR2	20,000		20,000			20,000	MOE
Contractual services-Company	Consultancy firm to deliver advisory services, data collection, and sectoral analysis through experts specializing in AFOLU, Energy, Waste, and IPPU. The firm will assist in developing National Inventory Reports (NIRs) for BTR3.		100,000	100,000			100,000	MOE
Contractual services-Company	Consultancy firm to develop a framework for tracking NDC-related activities and preparing technical annexes for REDD+ for BTR3		50,000	50,000			50,000	MOE

Expenditure Category	Detailed Description	Component (USDeq.)						Responsible Entity
		Component 1	Component 2	Sub-Total	M&E	Project Management Cost (PMC)	Total (USDeq.)	(Executing Entity receiving funds from the GEF Agency)[1]
Contractual services-Company	Consultancy firm to provide targeted advisory services, data collection, and sectoral analysis led by experts for climate impact and adaptation activities for BTR3.		40,000	40,000			40,000	MOE
Contractual services-Company	Consultancy firm to provide targeted advisory services, sectoral analysis, and expert-led data collection, as well as support for conferences, workshops, training sessions, field visits, and monitoring activities related to financial support, technology development and transfer, capacity building, and support needed, received, and mobilized for the BTR3		20,000	20,000			20,000	MOE
Training, Workshops, Meetings	A series of consultation workshops will be convened to develop the National Inventory Report for BTR2	60,000		60,000			60,000	MOE
Training, Workshops, Meetings	A series of consultation workshops will be convened to support the tracking of NDC-related activities and the preparation of technical annexes for REDD+ for BTR2.	30,000		30,000			30,000	MOE
Training, Workshops, Meetings	A series of consultation workshops will be convened to assess climate change impacts and develop adaptation measures for BTR2.	35,000		35,000			35,000	MOE
Training, Workshops, Meetings	A series of consultation workshops will be convened to support data collection, training, field visits, conferences, and monitoring activities related to financial support, technology development and transfer, capacity building, and support needed, received, and mobilized for BTR2	5,000		5,000			5,000	MOE
Training, Workshops, Meetings	A series of consultation workshops will be convened to develop the National Inventory Estimates (NIE), including the preparation of Common Reporting Tables (CRTs) and REDD+ annexes for BTR3		60,000	60,000			60,000	MOE
Training, Workshops, Meetings	A series of consultation workshops will be convened to support the tracking of NDC-related activities and the preparation of technical annexes for REDD+ for BTR3.		30,000	30,000			30,000	MOE
Training, Workshops, Meetings	A series of consultation workshops will be convened to assess climate change impacts and develop adaptation measures for BTR3.		35,000	35,000			35,000	MOE

Expenditure Category	Detailed Description	Component (USDeq.)						Responsible Entity
		Component 1	Component 2	Sub-Total	M&E	Project Management Cost (PMC)	Total (USDeq.)	
Training, Workshops, Meetings	A series of consultation workshops will be convened to support data collection, training, field visits, conferences, and monitoring activities related to financial support, technology development and transfer, capacity building, and support needed, received, and mobilized for BTR3		5,000	5,000			5,000	(Executing Entity receiving funds from the GEF Agency)[1] MOE
Training, Workshops, Meetings	A series of consultation workshops, including the inception meeting, project board meetings, public consultations, and the final dissemination meeting			-	20,000		20,000	MOE
Travel	Travel for project staff, key institutions and partners, to support data collection, conferences, workshops, training sessions, field visits, and monitoring activities related to the GHG Inventory related activities for BTR2 under outcome 1.1	30,000		30,000			30,000	MOE
Travel	Travel for project staff, key institutions, and partners for data collection, conferences, workshops, training, field visits, and monitoring related to the NDC-related activities for BTR2 under outcome 1.2	10,000		10,000			10,000	MOE
Travel	Travel for project staff, key institutions, and partners for data collection, conferences, workshops, training, field visits, and monitoring related to the climate impact and adaptation activities for BTR2 under outcome 1.3	10,000		10,000			10,000	MOE
Travel	Travel for project staff, key institutions and partners, to support data collection, conferences, workshops, training sessions, field visits, and monitoring activities related to the GHG Inventory related activities for BTR3 development under outcome 2.1		30,000	30,000			30,000	MOE
Travel	Travel for project staff, key institutions, and partners for data collection, conferences, workshops, training, field visits, and monitoring related to the NDC-related activities for BTR3 under outcome 2.2		10,000	10,000			10,000	MOE
Travel	Travel for project staff, key institutions, and partners for data collection, conferences, workshops, training, field visits, and monitoring related to the climate impact and adaptation activities for BTR3 under outcome 2.3		10,000	10,000			10,000	MOE

Expenditure Category	Detailed Description	Component (USDeq.)						Responsible Entity
		Component 1	Component 2	Sub-Total	M&E	Project Management Cost (PMC)	Total (USDeq.)	
Travel	Travel for project staff, key institutions and partners, to support data collection, conferences, workshops, training sessions, field visits, and monitoring activities			-		8,000	8,000	MOE
Office Supplies	Supplies and stationary cost for dissemination of results			-		17,000	17,000	MOE
Other Operating Costs	Printing, publications, and interpretation services for consultations and dissemination of BTR2 results under Component 1	15,000		15,000			15,000	MOE
Other Operating Costs	Printing, publications, and interpretation services for consultations and dissemination of BTR3 results under Component 2		15,000	15,000			15,000	MOE
Other Operating Costs	Professional audit services			-		15,000	15,000	UNDP
Grand Total		540,000	540,000	1,080,000	20,000	100,000	1,200,000	

ANNEX C: ENVIRONMENTAL AND SOCIAL SAFEGUARDS

Attached any screening documents or other ESS related documents (if applicable). ESS screening is not required for EAs but should be included if its available.

Check this box is ESS screening is not required per Agency's regulations

Title

SESP_BTR2+BTR3_Indonesia_Please consider this version