

GEF-8 REQUEST FOR Climate Change enabling activity

Proposal for Funding Under the GET
Processing Type: Expedite

TABLE OF CONTENTS

| | |
|--|-----------|
| SECTION 1: ENABLING ACTIVITY SUMMARY | 3 |
| A. Funding Elements | 4 |
| B. Enabling Activity Summary | 5 |
| ENABLING ACTIVITY COMPONENTS | 6 |
| SECTION 2: ENABLING ACTIVITY SUPPORTING INFORMATION..... | 10 |
| C. Eligibility Criteria | 10 |
| D. Institutional Framework | 26 |
| E. Monitoring and Evaluation Plan | 29 |
| SECTION 3: INFORMATION TABLES..... | 33 |
| F. GEF Financing Resources Requested by Agency, Country and Programming of Funds..... | 33 |
| G. Rio Markers..... | 33 |
| H. Record of Endorsement of GEF Operational Focal Point(s) on Behalf of the Government(s): | 33 |
| ANNEX A: RESPONSES TO STAKEHOLDER COMMENTS | 33 |
| ANNEX B: PROJECT BUDGET TABLE | 33 |
| ANNEX C: ENVIRONMENTAL AND SOCIAL SAFEGUARDS..... | 42 |

SECTION 1: ENABLING ACTIVITY SUMMARY

Enabling Activity Title

Enabling the Federal Democratic Republic of Ethiopia to prepare its First Biennial Transparency Report (BTR1) and a combined Second Biennial Transparency Report (BTR2) / Fourth National Communication (NC4) to the UNFCCC

| | |
|--|--|
| Country(ies) | GEF Enabling Activity ID |
| Ethiopia | 11483 |
| GEF Agency(ies): | GEF Agency Enabling Activity ID |
| FAO | 747487 |
| Submission Date | Expected Implementation Start |
| 11/7/2023 | 7/1/2024 |
| Project Executing Entity(s): | Executing Partner Type |
| Ministry of Planning and Development (MOPD) Food and Agriculture Organization (FAO) | Government GEF Agency |
| GEF Focal Area (s) | Expected Duration (In Months) |
| Climate Change | 36 |
| Type of Report(s) | Expected Report Submission to Convention |
| UNFCCC Biennial Transparency Report (BTR) | 12/31/2024 |
| UNFCCC Biennial Transparency Report/ National Communication (BTR/NC) | 12/31/2026 |

A. Funding Elements

| GEF-8 Program | Trust Fund | GEF Financing (\$) |
|-------------------------------------|------------|---------------------|
| CCM-EA | GET | 1,233,000.00 |
| Total Enabling Activity Cost | | 1,233,000.00 |

Does the enabling activity deviate from typical cost ranges? Yes No

If yes, please describe

B. Enabling Activity Summary

Enabling Activity Objective

The Federal Democratic Republic of Ethiopia has so far submitted three National Communications and prepared a draft of its first BUR (BUR1). The present project will extensively draw from and build upon the past and current work rather than duplicating what has been and is being undertaken. Thus, the main objective of this proposal is to support Ethiopia in preparing and submitting the first Biennial Transparency Report (BTR1) and the second BTR combined with the fourth National Communication (BTR2/NC4) in compliance with the Convention and Paris Agreement's reporting obligations.

Enabling Activity Summary

The Paris Agreement empowers countries to act towards limiting global average temperature increases to as close to 1.5°C as possible above pre-industrial levels, to strengthen climate resilience and to make financial flows consistent with these overall objectives.

Regular reporting by countries of transparent information on the implementation and achievement of their national objectives, provides a snapshot of global progress in relation to the objectives of the Paris Agreement, helping to enable a global assessment of collective progress. In turn, the reported information undergoes peer assessment, which helps to build mutual trust and confidence among countries, provide a better understanding of current climate actions and levels of support needed and provided. Through this process, countries gain the opportunity to learn from each other by sharing achievements, best practices, and experiences.

As part of the enhanced transparency framework (ETF), all countries ratifiers of the Paris Agreement will follow a single, universal transparency process. The information gathered under the ETF will provide a clear understanding of climate change actions and support, and ultimately contribute to the periodic global stocktaking of the implementation of the Paris Agreement.

The Project “Enabling the Federal Democratic Republic of Ethiopia to prepare its First Biennial Transparency Report (BTR1) and combined Second Biennial Transparency Report (BTR2) / Fourth National Communication (NC4) to the UNFCCC” aims to assist Ethiopia in responding to the reporting requirements under the Convention and the Paris Agreement to address climate change and its impacts and to take part in the review process.

The first biennial transparency reports (BTRs) are due at the latest by 31 December 2024. Parties, except Small Islands Developing States (SIDS) and Least Developed Countries (LDCs), will submit their BTRs “no less frequently than on a biennial basis”. For non-Annex I Parties to the Convention and the Paris Agreement (developing countries), the BTRs will supersede the requirements to submit biennial update reports (BUR), while all Parties will have to continue reporting NCs every for years.

Under this project, BTR1 and BTR2+NC reports will be prepared in close coordination with any other climate-related ongoing project and activity in the country, funded by the GEF and/or other donors.

The expected results are: 1) Institutional arrangements for improved transparency activities are in place and effective; 2) The national team and main stakeholders obtain a common understanding of the key elements of the Enhanced Transparency Framework (ETF) and the benefits to the country that arise from it; and 3) High quality reports (BTR1 and BTR2+NC) are produced with information reported in narrative and tabular formats in a way that facilitates the tracking of progress in the implementation and achievement of the National Determined Contribution (NDC) targets.

Stakeholders' involvement and consultation processes are critical to the success of this project. An effective engagement of key stakeholders is envisaged during project preparation, implementation, monitoring and evaluation. This aims to enhance ownership of the reporting process, bringing it more in line with national needs and international requirements.

Although not explicitly included as an expected result, preparation of an Adaptation Communication and submission along with one of the reports in this project (or future submissions of updated NDC or NAP) may be considered by Ethiopia, should conditions allow. On the other hand, adaptation information will be included as part of the BTR1 and BTR2/NC4, section IV.

ENABLING ACTIVITY COMPONENTS

Component 1: National consultations and plan for BTR1, BTR2 and NC4

GEF Enabling Activity Financing (\$): 157,400.00

Outcome:

Outcome 1.1: Enhanced coordination and capacity for reports preparation

Output:

Output.1.1.1 Gender-responsive mechanisms for stakeholders' involvement and coordination identified, including roles and responsibilities

Output 1.1.2 Gender-responsive capacity building plan and trainings delivered

Output 1.1.3 Plan for regular preparation of BTRs and NC developed

Component 2: Preparation of BTR1 and BTR2/NC4

GEF Enabling Activity Financing (\$): 922,120.00

Outcome:

Outcome 2.1 National GHG inventory reported

Outcome 2.2 Information on tracking NDC progress reported

Outcome 2.3 Information on climate change impacts and adaptation reported

Outcome 2.4 Information on financial, technology development and transfer and capacity building support needed and received reported

Outcome 2.5 BTRs and NC finalized and submitted

Output:

Output 2.1.1 GHG emissions and removals estimated, and common reporting tables compiled for the time series 1990-2022 for BTR1 and 1990-2024 for BTR2/NC4

Output 2.1.2 National inventory documents (NID) prepared (for the time series 1990-2022 for BTR1 and 1990-2024 for BTR2/NC4)

Output 2.2.1 Progress of mitigation policies and actions assessed and reported using common tabular formats (up to 2022 for BTR1 and up to 2024 for BTR2)

Output 2.2.2 GHG emissions projections elaborated and reported using common tabular formats

Output 2.3.1 Information on climate change impacts, vulnerability, risks of human and natural systems, and adaptation, considering gender-disaggregated data, gathered and reported

Output 2.3.2 Information on losses and damages associated with the adverse effects of climate change, considering gender-disaggregated data, gathered and reported

Output 2.4.1 Information on financial, technology development and transfer, and capacity building support needed and received (FTC), considering gender-disaggregated data, gathered and reported using common tabular formats

Output 2.5.1 First BTR including additional and non-compulsory information finalized and submitted to government

Output 2.5.2 Combined second BTR and fourth NC including additional and non-compulsory information finalized and submitted to government

Output 2.5.3 Participation in the BTR technical expert reviews (TER) and subsequent facilitative multilateral consideration of progress (FMCP)

Component 3: Project Monitoring and Evaluation (M&E)

GEF Enabling Activity Financing (\$): 41,550.00

Outcome:

Outcome 3.1 Project monitored and closed

Output:

Output 3.1 Project monitored to support results-based management and learning as well as for gender-related results

Output 3.2 Final evaluation performed

M&E

GEF Enabling Activity Financing (\$):

Outcome:

Output:

Component Balances

| Project Components | GEF Enabling Activity Financing (\$) |
|---|--------------------------------------|
| Component 1: National consultations and plan for BTR1, BTR2 and NC4 | 157,400.00 |
| Component 2: Preparation of BTR1 and BTR2/NC4 | 922,120.00 |
| Component 3: Project Monitoring and Evaluation (M&E) | 41,550.00 |

| | |
|-------------------------------------|---------------------|
| M&E | |
| Subtotal | 1,121,070.00 |
| Project Management Cost | 111,930.00 |
| Total Enabling Activity Cost | 1,233,000.00 |

Please provide justification

The Paris Agreement empowers countries to act towards limiting global average temperature increases to as close to 1.5°C as possible above pre-industrial levels, to strengthen climate resilience and to make financial flows consistent with these overall objectives. Regular reporting by countries of transparent information on the implementation and achievement of their national objectives, provides a snapshot of global progress in relation to the objectives of the Paris Agreement, helping to enable a global assessment of collective progress. In turn, the reported information undergoes peer assessment, which helps to build mutual trust and confidence among countries, provide a better understanding of current climate actions and levels of support needed and provided. Through this process, countries gain the opportunity to learn from each other by sharing achievements, best practices, and experiences. As part of the enhanced transparency framework (ETF), all countries ratifiers of the Paris Agreement will follow a single, universal transparency process. The information gathered under the ETF will provide a clear understanding of climate change actions and support, and ultimately contribute to the periodic global stocktaking of the implementation of the Paris Agreement. The Project “Enabling the Federal Democratic Republic of Ethiopia to prepare its First Biennial Transparency Report (BTR1) and combined Second Biennial Transparency Report (BTR2) / Fourth National Communication (NC4) to the UNFCCC” aims to assist Ethiopia in responding to the reporting requirements under the Convention and the Paris Agreement to address climate change and its impacts and to take part in the review process. The first biennial transparency reports (BTRs) are due at the latest by 31 December 2024. Parties, except Small Islands Developing States (SIDS) and Least Developed Countries (LDCs), will submit their BTRs “no less frequently than on a biennial basis”. For non-Annex I Parties to the Convention and the Paris Agreement (developing countries), the BTRs will supersede the requirements to submit biennial update reports (BUR), while all Parties will have to continue reporting NCs every for years. Under this project, BTR1 and BTR2+NC reports will be prepared in close coordination with any other climate-related ongoing project and activity in the country, funded by the GEF and/or other donors. The expected results are: 1) Institutional arrangements for improved transparency activities are in place and effective; 2) The national team and main stakeholders obtain a common understanding of the key elements of the Enhanced Transparency Framework (ETF) and the benefits to the country that arise from it; and 3) High quality reports (BTR1 and BTR2+NC) are produced with information reported in narrative and tabular formats in a way that facilitates the tracking of progress in the implementation and achievement of the National Determined Contribution (NDC) targets. Stakeholders’ involvement and consultation processes are critical to the success of this project. An effective engagement of key stakeholders is envisaged during project preparation, implementation, monitoring and evaluation. This aims to enhance ownership of the reporting process, bringing it more in line with national needs and international requirements. Although not explicitly included as an expected result, preparation of an Adaptation Communication and submission along with one of the reports in this project (or future submissions of updated NDC or NAP) may be considered by Ethiopia, should conditions allow. On the other hand, adaptation information will be included as part of the BTR1 and BTR2/NC4, section IV.

SECTION 2: ENABLING ACTIVITY SUPPORTING INFORMATION

C. Eligibility Criteria

Please provide eligibility information for this enabling activity.

Ethiopia ratified the UNFCCC in 1994, became part of the Kyoto Protocol in 2005, and ratified the Paris Agreement in 2017. As a Party to the Convention and the Paris Agreement, Ethiopia is eligible to receive financing for the preparation of climate national reports. The country has so far developed and reported to the UNFCCC three national communications (NC, in 2001, 2016 and 2023) and has drafted its first Biennial Update Report (BUR1).

In 2021, Ethiopia confirmed its commitment to climate action by updating its National Determined Contribution (NDC), improving the evidence-base (economic data and greenhouse gases), a process which led to a substantially revised Business as Usual (BAU) pathway, as well as a clearer demarcation of the unconditional and conditional elements of the proposed actions.

The second NDC charts a way for Ethiopia to continue pursuing a low emissions development and climate resilient pathway towards the national objectives for sustainable development while meeting the obligations of the PA.

To this goal, the enabling activity project hereby proposed will ensure uptake of material, data and lessons learnt as well as coordination with any recent or ongoing ETF project in the country and the Long Term - Low Emission and Climate Resilient Development Strategy (LT-LEDS). It will therefore represent further opportunity to integrate findings, recommendations and needs identified, and building in-country capacity to produce high quality reports to be submitted to UNFCCC, especially the first Biennial Transparency Report (BTR1), and improve reporting processes in general in Ethiopia. In this respect, all the work already carried out to develop the draft BUR1 will be fully taken up and expanded for BTR1 to account for 1990-2022 time-coverage and for the limited time remaining until the BTR1 submission deadline of December 31 2024, which the government aims to comply with (no request for flexibility is expected).

A list of potential ongoing or recently closed ETF-related activities the project will connect with is to be found in Table 1 below.

Table 1: relevant ETF-related activities in the country the present project will build upon

| <i>Denomination</i> | <i>Link</i> | <i>Timeframe</i> | <i>Short description</i> |
|---------------------|---|------------------|--|
| SCALA (FAO/UNDP) | https://www.fao.org/in-action/scala/overview/about/en | 2020 - 2025 | With climate change threatening the agriculture sectors, |

| | | |
|--|--|--|
| | | <p>livelihoods and food security, there is an urgent need for scaled action to cope with climate-related impacts. In response to that, SCALA supports 12 countries in Africa, Asia and Latin America to both build adaptive capacity and to implement low emission priorities in agriculture and land use. The programme uses a multi-stakeholder approach, harnessing strong engagement from the private sector and key national institutions. National activities focus on strengthening policies, appraising and adopting innovative approaches, as well as</p> |
|--|--|--|

| | | | |
|---------|--|-------------|--|
| | | | <p>removing key barriers related to information gaps, governance, finance, gender mainstreaming and integrated monitoring and reporting. The ultimate goal is for countries to turn agricultural related priorities laid out in their National Adaptation Plans (NAPs) and Nationally Determined Contributions (NDCs) into action.</p> |
| LT-LEDS | <p>https://unfccc.int/documents/630312</p> | 2020 - 2050 | <p>The LT-LEDS communicated under the Paris Agreement should aim to provide both a vision and a pathway to guide countries' transitions to a decarbonized, 1.5°C</p> |

| | | |
|--|--|---|
| | | <p>compatible economy, consistent with the achievement of</p> <p>net-zero emissions (NZE) by mid-century and considering</p> <p>national circumstances (2050 Pathways Platform).</p> <p>This vision and pathway can help formulate Ethiopia's</p> <p>aspirations by identifying critical issues, challenges, and</p> <p>opportunities at the intersection of climate action and</p> <p>socioeconomic development objectives.</p> <p>The LT-LEDS for Ethiopia will serve a critical role in</p> <p>implementing the common</p> |
|--|--|---|

| | | |
|--|--|--|
| | | <p>objectives under the United Nations Framework Convention on Climate Change (UNFCCC) guidelines and the Paris Agreement. Given Ethiopia's position as a "green champion" and a "green model" country in Africa, building on the pioneering Climate Resilience Green Economy (CRGE) strategy developed in 2011 and the recent launch of the Green Legacy Initiative, an impactful and transformational LT-LEDS will further demonstrate</p> |
|--|--|--|

| | | | |
|------|---|-----------|---|
| | | | Ethiopia's global leadership in climate action. |
| CBIT | https://www.thegef.org/projects-operations/projects/9967 | 2019-2023 | The Government of Ethiopia (GoE) is a party to UNFCCC and is required to report all its GHG emissions and reduction efforts periodically, as per the Paris Agreement requirements. Whilst the country is committed to global efforts of reducing GHG emissions through its Climate Resilient Green Economy, the country lacks the proper technical and institutional capacity to adhere to the Paris Agreement Enhanced Transparency Framework. This challenge will inhibit |

| | | |
|--|--|---|
| | | <p>the country to benefit from the financial and technological flows which have been identified as critical to the attainment of the country's ambitious target to become middle-income by 2025. The "Capacity-Building program to comply with the Paris Agreement and implement its transparency requirement at the national level" project seeks to close the existing technical and institutional capacity challenges by enhancing institutional and technical capacity related to climate transparency in Ethiopia. The project strengthened institutional and technical capacity for</p> |
|--|--|---|

| | | |
|--|--|---|
| | | <p>transparency through training and development of guidelines. Among others, the project developed the third national Communication and initiated the First Biennial Update Report, developed a national system for the GHG inventory database and information framework, trained 800+ experts on the use of 2006 IPCC guidelines, transparency, the Paris Agreement, and the MRV Database System, together with local Universities developed a GHG quality assurance and quality control (QA/QC) plan and procedure, conducted an uncertainty analysis of the</p> |
|--|--|---|

| | | | GHG inventory. |
|------------|---|--------|--|
| NAP / CRGE | https://www4.unfccc.int/sites/NAPC/Documents/Parties/Final%20Ethiopia-national-adaptation-plan%20%281%29.pdf | 2019 - | Ethiopia's National Adaptation Plan (NAP-ETH) builds on ongoing efforts to address climate change in the country's development policy framework, including the Climate Resilient Green Economy (CRGE) strategy and the second Growth and Transformation Plan (GTP II), as well as sectoral climate resilience strategies and regional and municipal adaptation plans. Its goal is to reduce vulnerability to the impacts of climate change by building adaptive capacity and resilience. NAP-ETH aims to |

| | | | |
|--------------------|---|-----------|--|
| | | | <p>strengthen holistic integration of climate change adaptation in Ethiopia's long-term development pathway, supported by effective institutions and governance structures, finance for implementation and capacity development and strengthened systems for disaster risk management and integration among different sectors. The plan and its implementation are guided by the principles of participation, coherent interventions, stakeholder empowerment, gender sensitivity, equitable implementation and partnership.</p> |
| Aligning financial | https://www.international-climate-initiative.com/en/project/aligning-financial-flows-with-the- | 2012-2024 | Article 2.1 c of the Paris |

| | | |
|----------------------------|--|---|
| <p>flows with PA (IKI)</p> | <p>paris-agreement-in-africa-21-i-437-afrika-a-aligning-financial-flows/</p> | <p>Agreement (PA) represents a global goal for countries to make their financial flows (FF) consistent with low greenhouse gas emissions and climate-resilient development. The project aims to formulate evidence-based options for aligning FF with the PA in a way that encourages the presentation of ambitious mitigation and adaptation actions in future NDCs and long-term strategies of African countries. The project develops a systematic assessment of potential volumes and sources of FF to be aligned with the PA. The project also identifies and analyses</p> |
|----------------------------|--|---|

| | | | |
|---|--|------------------|---|
| | | | <p>sectoral prospects for the re-investment of FF and leveraging existing funding to high-risk countries to attract sustainable/green financing for climate adaptation. A vital component of the project is knowledge brokering, enabling the convening, sharing and exchanging of emerging evidence from the target countries with a broader group of African countries that reflect similar pathways.</p> |
| <p>Greening Financial Systems Programme (IKI/EBI)</p> | <p>https://www.international-climate-initiative.com/PROJECT1577-1</p> | <p>2022-2027</p> | <p>In order to shift overall financial flows to sustainable investments, the financial sector and specifically financial regulators play a key role. In this regard, this</p> |

| | | |
|--|--|---|
| | | <p>project supports central banks and supervisors to better account for climate related risks and make use of the regulatory measures available to them to support a shift of overall financial flows. The project thereby promotes net zero and climate-resilient financial systems that ultimately will support the private sector in deploying climate-related and environmentally sustainable investments. The project is part of the initiative “Readiness support for greening central banks” of the NDC Partnership to support central banks and other financial</p> |
|--|--|---|

| | | | |
|------------------------|---|-------------|--|
| | | | regulators in developing countries to take climate into account. |
| Climate Promise (UNDP) | https://climatepromise.undp.org/ | 2017 - 2023 | The project helps countries to comply with their Paris Agreement commitments, to build institutional and technical resources and skills through technical and financial assistance for climate change mitigation, and to develop the global knowledge exchange and peer-to-peer learning for leadership and awareness raising. Policy and financing options for the implementation and mainstreaming of LEDS and mitigation activities are identified, and opportunities, costs, barriers, and risks involved in NDC solutions |

| | | | |
|-------------------------------------|---|-------------|--|
| | | | <p>analysed. Countries are given specific advice on their Partnership Plans drawn up through the NDC Partnership and its Climate Action Enhancement Package (CAEP) and on the support needs identified therein, to generate impacts and learning, and the project responds directly to government requests. The project ensures that NDC implementation becomes the driving force for sustainable development, advances gender equality, the transition to carbon-free economies, and the achievement of the SDGs.</p> |
| Transparent monitoring in practice: | https://www.international-climate-initiative.com/PROJECT1524-1 | 2020 - 2024 | Transparent Monitoring (TM) can help |

| | | |
|--|--|--|
| <p>supporting post-Paris land use sector mitigation (IKI/CIFOR)</p> | | <p>developing countries to improve monitoring of land use emissions and better assess mitigation actions. The project develops guidance for TM, on how to implement open-source tools and open-access datasets and how to improve data access in four countries. In Côte d'Ivoire, the project develops guidance for assessing mitigation along cocoa supply chains to assist an effective and transparent accounting. In Ethiopia, its works towards integration of open-source tools, data and TM principles into the national MRV system to improve the assessment of biomass following land use change</p> |
|--|--|--|

| | | |
|--|--|---|
| | | <p>and participation of local communities. In Papua New Guinea, it analyses the adoption of open data, of data accessibility policies and the improvement in participation of indigenous peoples and local communities in MRV. In Peru, it develops guidance towards an interactive near-real time forest change monitoring system linked to a national incentive system for forest-related mitigation.</p> |
|--|--|---|

D. Institutional Framework

Describe the institutional arrangements for implementation of the enabling activity.

The institutional arrangements for climate change coordination and reporting in Ethiopia have evolved multiple times over the years and currently feature Ministry of Planning and Development (MoPD) as the leading technical institution. MoPD is now the highest implementation body on all matters relating to the environment and its management in the country, as well as leading institution for the fulfilment of national obligations of Ethiopia as a Party to the UNFCCC, including responsibility to approve and submit reports to the UNFCCC on behalf of the government.

MoPD is the key government body providing the necessary policy analysis, guidance, and support on economic, social, demographic, spatial, environmental and institutional development. It hosts the GEF focal point, the Central Statistical Service, the Environmental Protection Authority, and the Policy Studies Institute.

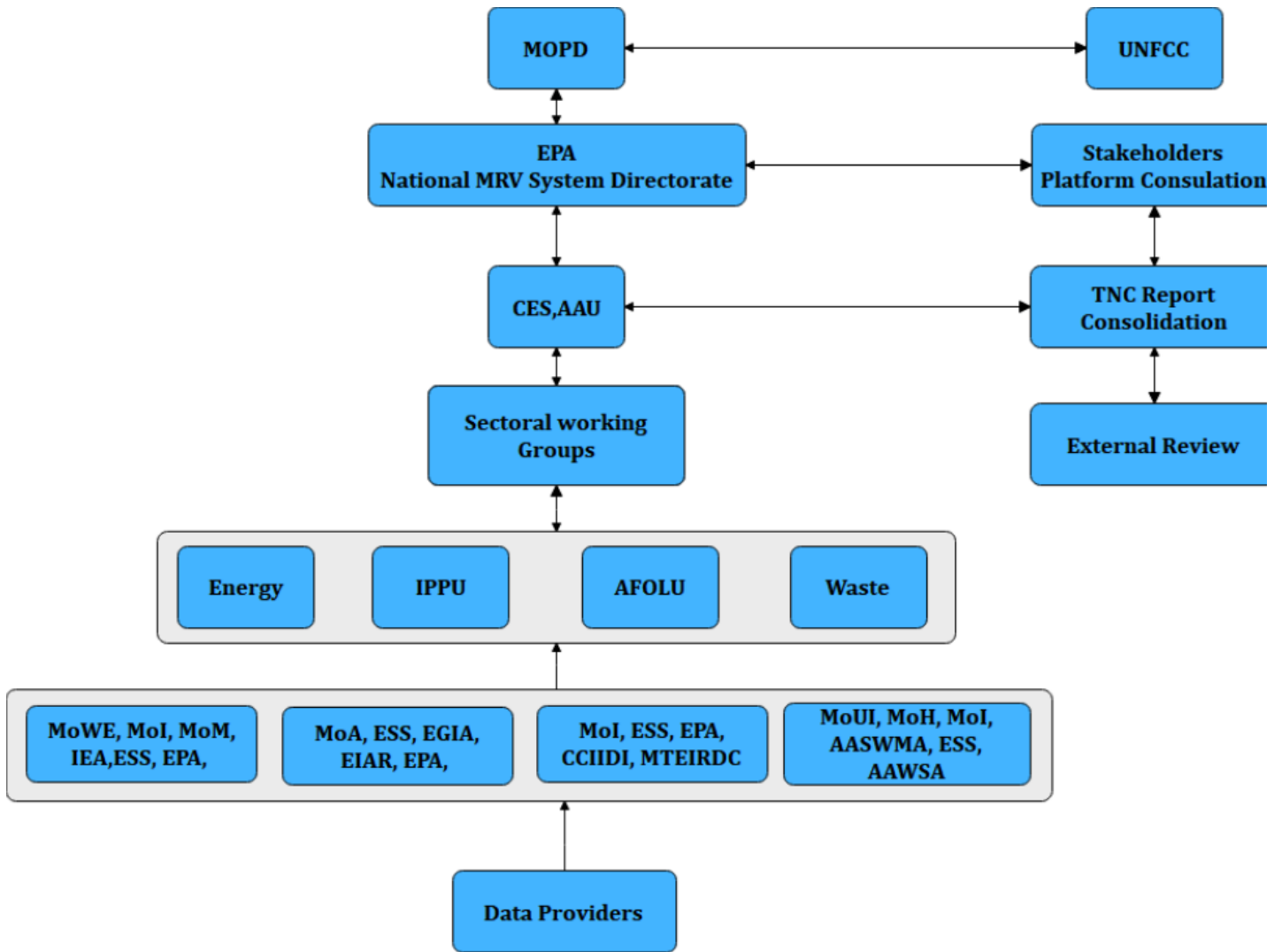
In line with the above, the execution of the project will be led by the MoPD with the technical assistance of the Environmental Protection Authority (EPA). FAO will act as GEF Implementing Agency and will supervise, monitor and support the implementation of project activities in line with GEF and FAO standard procedures. FAO will be responsible for reporting, monitoring and evaluation of the project to GEF, providing support to the project team in meeting the technical, administrative, finance and management requirements. In addition, as requested by MoPD, a national consulting firm will facilitate the national technical work and team's engagement for data provision, data analysis work as well as supporting writing up of the document. Furthermore, because of MoPD's limited access to international experts and given FAO's extensive network of international consultants working in the reporting technical field, FAO in consultation with MoPD will assure and manage the recruitment of the international experts under the project and the training of relevant national experts.

The institutional structure for this project will replicate the existing one under the NC3 and BUR1 projects as well as the LT-LEDS. The Project Team will be recruited at the beginning of the project by MoPD including the project coordinator. The role of the project Coordinator is to provide strategic guidance and consistent general coordination during the BTR and NC development.

In order to comply with the Enhanced Transparency Framework and its reporting requirements in a successful way, building on the experience developed under the NC3 (see Figure 1), stakeholders' engagement will be modified and expanded to cover a wide range of reporting domains comprising the inventory of greenhouse gases, tracking of NDCs progress (mitigation, adaptation, financial, technological and capacity building) and climate change impacts, ~~and~~ including adequate consideration of gender. Beyond line ministries and agencies, research institutions, and local authorities, subdivided in working groups by reporting domain, stakeholders will also include NGOs, local communities, private sector and international organizations. Their participation will be ensured as much as possible through consultation mechanisms established under the CBIT Ethiopia project, the Climate-Resilient Green Economy (CRGE) Strategy Facility referred to in the National Adaptation Plan (NAP) and possibly through the Project Steering Committee (PSC). Clear roles and mandates during the project preparation, implementation, monitoring and evaluation of the project will be assigned to ensure that the capacity developed is maintained within the relevant stakeholders and ultimately that the reports reflect more the national needs and circumstances.

The Government of Ethiopia has requested FAO's assistance in providing technical guidance for the partial execution of a project focused on meeting the technical requirements of the Enhanced Transparency Framework related to climate change reporting. This includes the hiring of a specialized company to manage the data collection component of the project. FAO has agreed to provide these procurement and administrative execution support services at no additional cost, and this has been reviewed and approved by the GEF.

For more information, please consult ANNEX G: Stakeholder engagement matrix.



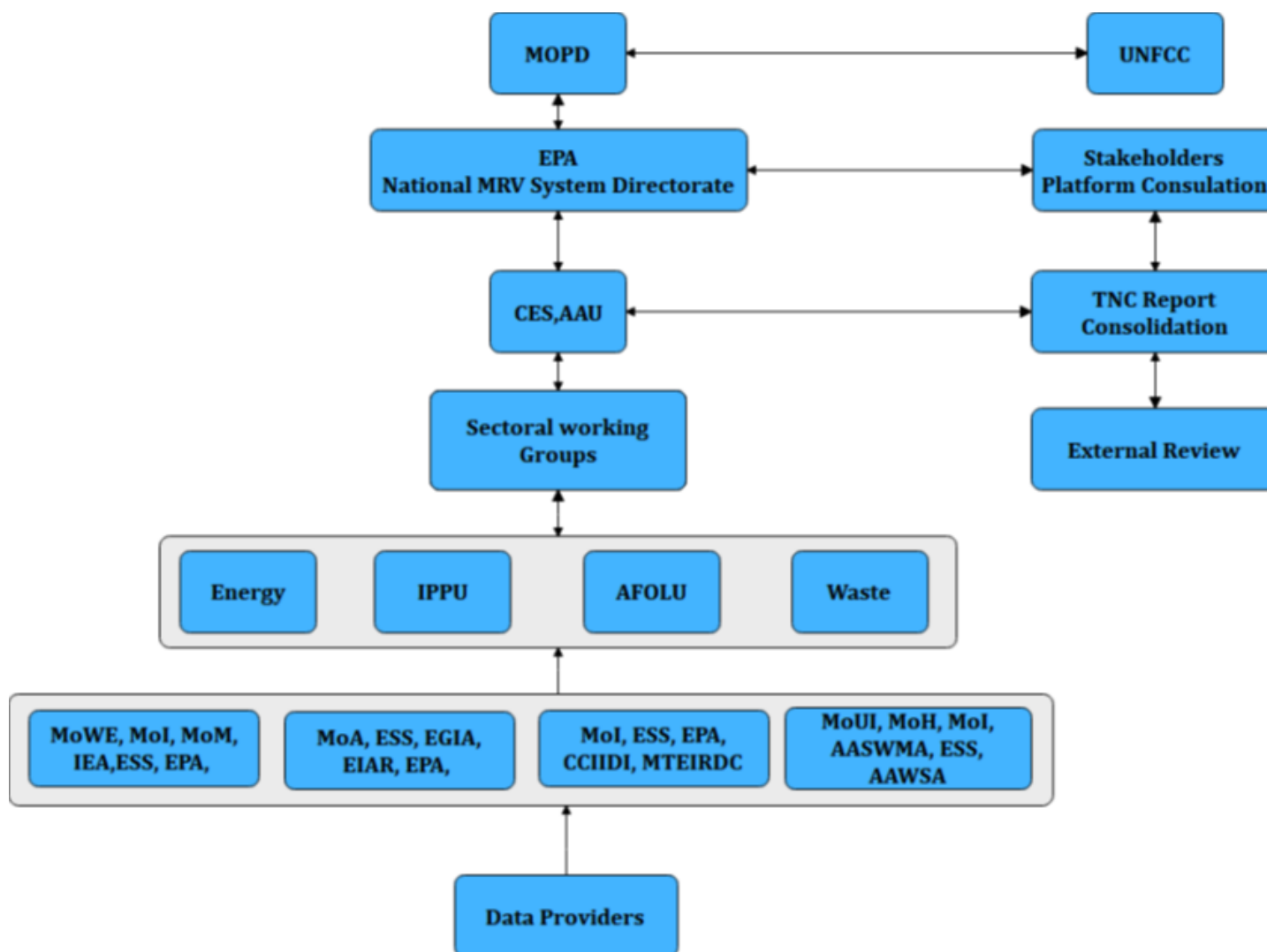


Figure 1: Institutional arrangement for the greenhouse gas inventory component of NC3.

EPA: Environment Protection Authority; CES,AAU: Centre for Environmental Sciences, Addis Ababa University; MoWE: Ministry of Women; MoI: Ministry of Industry; MoM: Ministry of Mines and Petroleum; IEA: International Energy Agency; ESS: Ethiopian Statistical Service ; MoA: Ministry of Agriculture; EGIA: Ethiopian Geospatial Information. Agency ; EIAR: Ethiopian Institute of Agricultural Research ; CCIIDI: Chemical & Construction Inputs Industry Development Institute ; MTEIRC: Manufacturing Technology & Engineering Industry - Research & Development Center ; MoH: Ministry of Health; AASWMA: Addis Ababa solid waste management agency; AAWSA: Addis Ababa Water and Sewage Authority.

E. Monitoring and Evaluation Plan

Describe the budgeted M&E plan.

The project monitoring and evaluation will be carried out according to FAO and GEF programming policies and procedures.

Project Inception Report

After project approval, a national project Inception Workshop will be held. After the workshop, the Project Coordinator will prepare a project Inception Report in consultation with PSC and the FAO Country Office. The report will include a description of the institutional functions and responsibilities and the action for coordination of the project stakeholders, the progress made in its establishment and start-up activities, as well as an update of any changes in external conditions that may affect the execution of the project. It will also include a detailed Annual Work Plan/Budget (AWPB) for the first year and the Monitoring matrix. The draft Inception Report will be submitted to FAO and PSC for their review and comments prior to completion, no later than three months after project start-up. The report must be approved by the Budget Holder (BH), the Lead Technical Officer (LTO) and the FAO-GEF Coordination Unit. The BH will upload the report to FPMIS.

Project Progress Reports (PPR)

The PPRs will be prepared based on the systematic monitoring of the output and outcome indicators identified in the Project Results Framework, the AWPB, and the Monitoring Plan. Each semester, the Project Coordinator will prepare a draft PPR and collect and consolidate FAO Project Task Force (PTF) comments. The report covering the July-December period must be accompanied by the updated AWPB for the following year for its review and no objection by the FAO PTF. The BH is responsible for coordinating the preparation and finalization of the PPR, in consultation with the Project Management Unit, LTO, and GEF Technical Officer (GTO). Following LTO, BH, and GTO approval, the GTO will ensure that project progress reports are uploaded to FPMIS in a timely manner.

Annual progress

NC and BTR Status Survey Questionnaires will be filled in once a year to gather information on progress and identify bottlenecks as well as technical support needs, in line with GEF and UNFCCC reporting requirements for BTR.

Lessons learned and knowledge generation

Results from the project will be disseminated within and beyond the project intervention area through existing information sharing networks and forums. The project will identify and engage, as relevant and appropriate, in scientific, policy-based and/or any other networks, which may be of benefit to the project. The project will identify, analyse and share lessons learned that might be beneficial to the design and implementation of similar projects and disseminate these lessons widely. There will be continuous

information exchange between this project and other projects of similar focus in the same country, region and globally.

Risk evaluation

The project will consider the challenges brought about by possible health restrictions as well as lack of synergy among relevant government stakeholders and other partners through a multi-sectoral and/or participatory approach in order to minimize risks, ensure safety, and promote successful project execution. The project will consider running a risk assessment for potential related risks and their impact on the project together with a contingency plan to address these risks and outline alternative approaches to mitigate any disruptions, if reckoned needed. The project will consider promoting or making use of online communication means for trainings and stimulate stakeholders' interactions towards a sustainable, inclusive, low in emissions and resilient climate change model.

Terminal evaluation

The FAO Office of Evaluation (OED) will conduct a final evaluation for this project. To this end, an allocation of USD 35,000 has been set aside for the evaluation (see table below). The evaluation will provide a comprehensive and systematic assessment of project execution, performance, and factors that affect execution and performance. Evaluations will seek to provide learning and accountability, promote transparency, and enable evidence-based decision making through knowledge sharing across stakeholders (such as FAO as the implementing agency, partner executing agencies, governments, other national partners, and the donor) to improve the performance of future projects.

Terminal report

Within two months prior to the project completion date, the Project Coordinator will submit a draft Terminal Report to the PSC and the FAO Country Office. Such a report will consist of a summary of the main project deliverables, results, conclusions, and recommendations. The report will be aimed at people who are not necessarily technical specialists and who must understand the policy implications of the findings and technical needs to ensure the sustainability of the project results. The Terminal Report will evaluate the activities, summarize the lessons, and express possible recommendations in terms of future projects execution. To this end, an allocation of USD 6,550 has been set aside (see table below)

| Type of M&E action | Cost (USD) |
|--------------------|------------------------|
| Final evaluation | 35,000 |
| Terminal report | 6,550 |

SECTION 3: INFORMATION TABLES

F. GEF Financing Resources Requested by Agency, Country and Programming of Funds

| GEF Agency | Trust Fund | Country/ Regional/ Global | Focal Area | Programming of Funds | GEF Enabling Activity Financing (\$) | Agency Fee (\$) | Total (\$) |
|----------------------------|------------|---------------------------|----------------|----------------------|--------------------------------------|-------------------|---------------------|
| FAO | GET | Ethiopia | Climate Change | CC Set-Aside | 1,233,000.00 | 117,135.00 | 1,350,135.00 |
| Total GEF Resources | | | | | 1,233,000.00 | 117,135.00 | 1,350,135.00 |

Sources of Funds for Country Star Allocation

| GEF Agency | Trust Fund | Country/ Regional/ Global | Focal Area | Sources of Funds | Total(\$) |
|----------------------------|------------|---------------------------|------------|------------------|-------------|
| Total GEF Resources | | | | | 0.00 |

G. Rio Markers

| Climate Change Mitigation | Climate Change Adaptation | Biodiversity | Desertification |
|---------------------------|---------------------------|-------------------|-------------------|
| Principal Objective 2 | Significant Objective 1 | No Contribution 0 | No Contribution 0 |

H. Record of Endorsement of GEF Operational Focal Point(s) on Behalf of the Government(s):

Please attach the *Operational Focal Point endorsement letter(s)* with this template.

| Name | Position | Ministry | Date (MM/DD/YYYY) |
|--------------------|---|--------------------------------------|-------------------|
| Mensur Dessie Nuri | Director, MEAs Negotiation Coordination | Ministry of Planning and Development | 4/27/2023 |
| Mensur Dessie Nuri | Director, MEAs Negotiation Coordination | Ministry of Planning and Development | 5/6/2024 |

ANNEX A: RESPONSES TO STAKEHOLDER COMMENTS

Describe how the enabling activity has addressed comments from stakeholders, including Council Members, Convention Secretariats, and STAP (if applicable).

ANNEX B: PROJECT BUDGET TABLE

Attach the project budget table.

| FAO Cost Categories | Unit | No. of units | Unit cost | Component 1 | Component 2 | Component 3 (M&E) | PMC | Total GEF | MOPD | FAO Support Services | Year 1 | Year 2 | Year 3 |
|--|---------|--------------|-----------|----------------|----------------|-------------------|----------------|------------------|----------------|----------------------|----------------|----------------|----------------|
| | | | | Total | Total | Total | | | | | | | |
| 5013 Consultants | | | | | | | | | | | | | |
| Enhanced Transparency Framework experts (international consultants) | Month | 24 | 6,000 | 14,400 | 129,600 | 0 | | 144,000 | | 144,000 | 48,000 | 48,000 | 48,000 |
| Sub-total International Consultants | | | | 14,400 | 129,600 | | | 144,000 | | 144,000 | 48,000 | 48,000 | 48,000 |
| Project Coordinator | Month | 42 | 1,415 | | | | 59,430 | 59,430 | 59,430 | | 19,810 | 19,810 | 19,810 |
| Administrative and financial assistant | Month | 42 | 1,250 | | | | 52,500 | 52,500 | 52,500 | | 17,500 | 17,500 | 17,500 |
| Technical experts: | | | | | | | | | | | | | |
| institutional processes and gender specialist | Month | 24 | 1,500 | 3,600 | 32,400 | | | 36,000 | 36,000 | | 12,000 | 12,000 | 12,000 |
| greenhouse gas inventory specialists | Month | 172 | 1,500 | 25,800 | 232,200 | | | 258,000 | 258,000 | | 86,000 | 86,000 | 86,000 |
| mitigation specialists | Month | 154 | 1,500 | 23,100 | 207,900 | | | 231,000 | 231,000 | | 77,000 | 77,000 | 77,000 |
| adaptation specialists | Month | 96 | 1,500 | 14,400 | 129,600 | | | 144,000 | 144,000 | | 48,000 | 48,000 | 48,000 |
| financial, technology and capacity support specialists | Month | 24 | 1,500 | 3,600 | 32,400 | | | 36,000 | 36,000 | | 12,000 | 12,000 | 12,000 |
| Sub-total national Consultants | | | | 70,500 | 634,500 | - | 111,930 | 816,930 | 816,930 | - | 272,310 | 272,310 | 272,310 |
| 5013 Sub-total consultants | | | | 84,900 | 764,100 | 0 | 111,930 | 960,930 | 816,930 | 144,000 | 320,310 | 320,310 | 320,310 |
| 5650 Contracts | | | | | | | | | | | | | |
| Reports layout design | Lumpsum | 2 | 7,275 | 0 | 14,550 | 0 | | 14,550 | 14,550 | | 4,850 | 4,850 | 4,850 |
| Data collection and analysis service provider | Lumpsum | 1 | 100,000 | 50,000 | 50,000 | 0 | | 100,000 | 100,000 | 100,000 | 33,333 | 33,333 | 33,333 |
| Final evaluation | Lumpsum | 1 | 35,000 | 0 | 0 | 35,000 | | 35,000 | 35,000 | 35,000 | | | 35,000 |
| Terminal report | Lumpsum | 1 | 6,550 | 0 | 0 | 6,550 | | 6,550 | 6,550 | 6,550 | | | 6,550 |
| 5650 Sub-total Contracts | | | | 50,000 | 64,550 | 41,550 | 0 | 156,100 | 14,550 | 141,550 | 38,183 | 38,183 | 79,733 |
| 5023 Training | | | | | | | | | | | | | |
| Workshop inception | Lumpsum | 1 | 5,000 | 5,000 | 0 | 0 | | 5,000 | 5,000 | | 5,000 | | |
| Consultation/advancement workshop | Lumpsum | 2 | 5,000 | 5,000 | 5,000 | 0 | | 10,000 | 10,000 | | 3,333 | 3,333 | 3,333 |
| Validation workshops for BTR1 and BTR2/NC4 | Lumpsum | 2 | 6,200 | 0 | 12,400 | 0 | | 12,400 | 12,400 | | 4,133 | 4,133 | 4,133 |
| Ad-hoc capacity building training sessions on ETF matters (including CTF and CRT tables) | Lumpsum | 5 | 5,000 | 12,500 | 12,500 | 0 | | 25,000 | 25,000 | | 8,333 | 8,333 | 8,333 |
| 5023 Sub-total training | | | | 22,500 | 29,900 | 0 | 0 | 52,400 | 52,400 | 0 | 20,800 | 15,800 | 15,800 |
| 5021 Travel | | | | | | | | | | | | | |
| Domestic travel | Lumpsum | 1 | 27,570 | 0 | 27,570 | 0 | | 27,570 | 27,570 | | 9,190 | 9,190 | 9,190 |
| International travel | Lumpsum | 8 | 4,500 | 0 | 36,000 | 0 | | 36,000 | 36,000 | 36,000 | 12,000 | 12,000 | 12,000 |
| 5021 Sub-total travel | | | | - | 63,570 | - | - | 63,570 | 27,570 | 36,000 | 21,190 | 21,190 | 21,190 |
| TOTAL | | | | 157,400 | 922,120 | 41,550 | 111,930 | 1,233,000 | 911,450 | 321,550 | 400,483 | 395,483 | 437,033 |



ETH

budget_resubmission

Stakeholder Engagement Matrix

1) Stakeholder Consultation during project formulation

| Stakeholder Name | Stakeholder Type | Stakeholder profile | Consultation Methodology | Consultation Findings | Date |
|---|-----------------------------|---|--|--|-------------------------|
| Ministry of Planning and Development | <i>Direct Beneficiary</i> | <i>National Government Institution body</i> | <i>Online consultation on project document</i> | <i>Provided direct feedback to FAO</i> | <i>June – July 2023</i> |
| Ministry of Agriculture | <i>Indirect Beneficiary</i> | <i>National Government Institution body</i> | <i>Online consultation on project document</i> | <i>Provided comments to MOPD</i> | <i>July 2023</i> |
| Ministry of Water and Energy | <i>Indirect Beneficiary</i> | <i>National Government Institution body</i> | <i>Online consultation on project document</i> | <i>Provided comments to MOPD</i> | <i>July 2023</i> |
| Ministry of transport and logistics | <i>Indirect Beneficiary</i> | <i>National Government Institution body</i> | <i>Online consultation on project document</i> | <i>Provided comments to MOPD</i> | <i>July 2023</i> |
| Ministry of industry | <i>Indirect Beneficiary</i> | <i>National Government Institution body</i> | <i>Online consultation on project document</i> | <i>Provided comments to MOPD</i> | <i>July 2023</i> |
| Ministry of mines | <i>Indirect Beneficiary</i> | <i>National Government Institution body</i> | <i>Online consultation on project document</i> | <i>Provided comments to MOPD</i> | <i>July 2023</i> |

| | | | | | |
|--|-----------------------------|---|--|----------------------------------|------------------|
| Ministry of urban development and infrastructure | <i>Indirect Beneficiary</i> | <i>National Government Institution body</i> | <i>Online consultation on project document</i> | <i>Provided comments to MOPD</i> | <i>July 2023</i> |
| Ministry of Health | <i>Indirect Beneficiary</i> | <i>National Government Institution body</i> | <i>Online consultation on project document</i> | <i>Provided comments to MOPD</i> | <i>July 2023</i> |
| Addis Ababa university | <i>Partner</i> | <i>National Government Institution body</i> | <i>Online consultation on project document</i> | <i>Provided comments to MOPD</i> | <i>July 2023</i> |
| Ministry of irrigation and lowlands | <i>Indirect Beneficiary</i> | <i>National Government Institution body</i> | <i>Online consultation on project document</i> | <i>Provided comments to MOPD</i> | <i>July 2023</i> |
| National Disaster Risk Management Commission | <i>Indirect Beneficiary</i> | <i>National Government Institution body</i> | <i>Online consultation on project document</i> | <i>Provided comments to MOPD</i> | <i>July 2023</i> |
| Ethiopian Forest development | <i>Indirect Beneficiary</i> | <i>National Government Institution body</i> | <i>Online consultation on project document</i> | <i>Provided comments to MOPD</i> | <i>July 2023</i> |
| Ethiopian Space Science and Geospatial Institute | <i>Indirect Beneficiary</i> | <i>National Government Institution body</i> | <i>Online consultation on project document</i> | <i>Provided comments to MOPD</i> | <i>July 2023</i> |
| Central statistics Service | <i>Indirect Beneficiary</i> | <i>National Government Institution body</i> | <i>Online consultation on project document</i> | <i>Provided comments to MOPD</i> | <i>July 2023</i> |
| Ministry of innovation and Technology | <i>Indirect Beneficiary</i> | <i>National Government Institution body</i> | <i>Online consultation on project document</i> | <i>Provided comments to MOPD</i> | <i>July 2023</i> |
| Environmental Protection Authority | <i>Partner</i> | <i>National Government Institution body</i> | <i>Online consultation on project document</i> | <i>Provided comments to MOPD</i> | <i>July 2023</i> |
| Ministry of women and social affairs | <i>Indirect Beneficiary</i> | <i>National Government Institution body</i> | <i>Online consultation on project document</i> | <i>Provided comments to MOPD</i> | <i>July 2023</i> |
| Developmental partners (CRGE forum members and Private sectors/NGOs (PHE, CCRDA, CCE, Farm Africa, ILRI, Green tech Africa, etc.,) | <i>Partner</i> | <i>National Government Institution body</i> | <i>Online consultation on project document</i> | <i>Provided comments to MOPD</i> | <i>July 2023</i> |
| Ethiopian agriculture research institute | <i>Indirect Beneficiary</i> | <i>National Government Institution body</i> | <i>Online consultation on project document</i> | <i>Provided comments to MOPD</i> | <i>July 2023</i> |
| Policy studies institute | <i>Indirect Beneficiary</i> | <i>National Government Institution body</i> | <i>Online consultation on project document</i> | <i>Provided comments to MOPD</i> | <i>July 2023</i> |
| Ethiopian meteorology institute | <i>Indirect Beneficiary</i> | <i>National Government Institution body</i> | <i>Online consultation on project document</i> | <i>Provided comments to MOPD</i> | <i>July 2023</i> |

| | | | | | |
|------------------------------------|---------|--|---|---------------------------------|--------------|
| Ethiopian civil service university | Partner | National Government Institution body | Online consultation on project document | Provided comments to MOPD | July 2023 |
|------------------------------------|---------|--|---|---------------------------------|--------------|

(+) Add stakeholders as necessary

Stakeholder Consultation foreseen during project implementation¹

| Stakeholder Name | Stakeholder Type | Stakeholder profile | Consultation Methodology | Consultation Findings | Date | Role |
|---|-----------------------------|---|--|--|-----------------------|---|
| Ministry of Planning and Development | <i>Direct Beneficiary</i> | <i>National Government Institution body</i> | <i>Online consultation on project document</i> | <i>Provided direct feedback to FAO</i> | <i>First 6 months</i> | Leading technical institution for report preparation |
| Ministry of Agriculture | <i>Indirect Beneficiary</i> | <i>National Government Institution body</i> | <i>Online consultation on project document</i> | <i>Provided comments to MOPD</i> | <i>First year</i> | Member of sectoral working group NIGHG* agriculture (AFOLU) |
| Ministry of Water and Energy | <i>Indirect Beneficiary</i> | <i>National Government Institution body</i> | <i>Online consultation on project document</i> | <i>Provided comments to MOPD</i> | <i>First year</i> | Member of sectoral working group NIGHG energy |
| Ministry of transport and logistics | <i>Indirect Beneficiary</i> | <i>National Government Institution body</i> | <i>Online consultation on project document</i> | <i>Provided comments to MOPD</i> | <i>First year</i> | Member of sectoral working group NIGHG energy |
| Ministry of industry | <i>Indirect Beneficiary</i> | <i>National Government Institution body</i> | <i>Online consultation on project document</i> | <i>Provided comments to MOPD</i> | <i>First year</i> | Member of sectoral working group NIGHG industry |
| Ministry of mines | <i>Indirect Beneficiary</i> | <i>National Government Institution body</i> | <i>Online consultation on project document</i> | <i>Provided comments to MOPD</i> | <i>First year</i> | Member of sectoral working group NIGHG industry |
| Ministry of urban development and infrastructure | <i>Indirect Beneficiary</i> | <i>National Government Institution body</i> | <i>Online consultation on project document</i> | <i>Provided comments to MOPD</i> | <i>First year</i> | Member of sectoral working group NIGHG land use (AFOLU) |
| Ministry of Health | <i>Indirect Beneficiary</i> | <i>National Government Institution body</i> | <i>Online consultation on project document</i> | <i>Provided comments to MOPD</i> | <i>First year</i> | Member of sectoral working group adaptation |
| Addis Ababa university | <i>Partner</i> | <i>National Government Institution body</i> | <i>Online consultation on project document</i> | <i>Provided comments to MOPD</i> | <i>First year</i> | Technical partner |
| Ministry of irrigation and low lands | <i>Indirect Beneficiary</i> | <i>National Government Institution body</i> | <i>Online consultation on project document</i> | <i>Provided comments to MOPD</i> | <i>First year</i> | Member of sectoral working group adaptation and mitigation |
| National Disaster Risk Management Commission | <i>Indirect Beneficiary</i> | <i>National Government Institution body</i> | <i>Online consultation on project document</i> | <i>Provided comments to MOPD</i> | <i>First year</i> | Member of sectoral working group climate change impacts |
| Ethiopian Forest development | <i>Indirect Beneficiary</i> | <i>National Government Institution body</i> | <i>Online consultation on project document</i> | <i>Provided comments to MOPD</i> | <i>First year</i> | Member of sectoral working group NIGHG land use (AFOLU) |
| Ethiopian Space Science and Geospatial Institute | <i>Indirect Beneficiary</i> | <i>National Government Institution body</i> | <i>Online consultation on project document</i> | <i>Provided comments to MOPD</i> | <i>First year</i> | Member of sectoral working group NIGHG land use (AFOLU) |

¹ Please include identification and consultations of disadvantage and vulnerable groups/individuals in line with the [GEF policy on Stakeholder Engagement](#) and [GEF Environmental and Social Safeguard](#).

| | | | | | | |
|---|-----------------------------|---|--|----------------------------------|-------------------|--|
| Central statistics Service | <i>Indirect Beneficiary</i> | <i>National Government Institution body</i> | <i>Online consultation on project document</i> | <i>Provided comments to MOPD</i> | <i>First year</i> | Technical partner |
| Ministry of innovation and Technology | <i>Indirect Beneficiary</i> | <i>National Government Institution body</i> | <i>Online consultation on project document</i> | <i>Provided comments to MOPD</i> | <i>First year</i> | Technical partner |
| Environmental Protection Authority | <i>Partner</i> | <i>National Government Institution body</i> | <i>Online consultation on project document</i> | <i>Provided comments to MOPD</i> | <i>First year</i> | Technical partner |
| Ministry of women and social affairs | <i>Indirect Beneficiary</i> | <i>National Government Institution body</i> | <i>Online consultation on project document</i> | <i>Provided comments to MOPD</i> | <i>First year</i> | Member of sectoral working groups adaptation and mitigation |
| Developmental partners (CRGE forum members and Private sectors/NGOs: PHE, CCRDA, CCE, Farm Africa, ILRI, Green tech Africa, etc.) | <i>Partner</i> | <i>National Government Institution body</i> | <i>Online consultation on project document</i> | <i>Provided comments to MOPD</i> | <i>First year</i> | Members of sectoral working groups adaptation and mitigation |
| Ethiopian agriculture research institute | <i>Indirect Beneficiary</i> | <i>National Government Institution body</i> | <i>Online consultation on project document</i> | <i>Provided comments to MOPD</i> | <i>First year</i> | Member of sectoral working group NIGHG agriculture (AFOLU) |
| Policy studies institute | <i>Indirect Beneficiary</i> | <i>National Government Institution body</i> | <i>Online consultation on project document</i> | <i>Provided comments to MOPD</i> | <i>First year</i> | Technical partner |
| Ethiopian meteorology institute | <i>Indirect Beneficiary</i> | <i>National Government Institution body</i> | <i>Online consultation on project document</i> | <i>Provided comments to MOPD</i> | <i>First year</i> | Member of sectoral working group climate change impacts |
| Ethiopian civil service university | <i>Partner</i> | <i>National Government Institution body</i> | <i>Online consultation on project document</i> | <i>Provided comments to MOPD</i> | <i>First year</i> | Technical partner |

* NIGHG: National Inventory of greenhouse gases

(+) Add stakeholders as necessary

Stakeholder Engagement Matrix

2) Stakeholder Consultation during project formulation

| Stakeholder Name | Stakeholder Type | Stakeholder profile | Consultation Methodology | Consultation Findings | Date |
|---|-----------------------------|---|--|--|-------------------------|
| Ministry of Planning and Development | <i>Direct Beneficiary</i> | <i>National Government Institution body</i> | <i>Online consultation on project document</i> | <i>Provided direct feedback to FAO</i> | <i>June – July 2023</i> |
| Ministry of Agriculture | <i>Indirect Beneficiary</i> | <i>National Government Institution body</i> | <i>Online consultation on project document</i> | <i>Provided comments to MOPD</i> | <i>July 2023</i> |

| | | | | | |
|---|-----------------------------|---|--|----------------------------------|------------------|
| Ministry of Water and Energy | <i>Indirect Beneficiary</i> | <i>National Government Institution body</i> | <i>Online consultation on project document</i> | <i>Provided comments to MOPD</i> | <i>July 2023</i> |
| Ministry of transport and logistics | <i>Indirect Beneficiary</i> | <i>National Government Institution body</i> | <i>Online consultation on project document</i> | <i>Provided comments to MOPD</i> | <i>July 2023</i> |
| Ministry of industry | <i>Indirect Beneficiary</i> | <i>National Government Institution body</i> | <i>Online consultation on project document</i> | <i>Provided comments to MOPD</i> | <i>July 2023</i> |
| Ministry of mines | <i>Indirect Beneficiary</i> | <i>National Government Institution body</i> | <i>Online consultation on project document</i> | <i>Provided comments to MOPD</i> | <i>July 2023</i> |
| Ministry of urban development and infrastructure | <i>Indirect Beneficiary</i> | <i>National Government Institution body</i> | <i>Online consultation on project document</i> | <i>Provided comments to MOPD</i> | <i>July 2023</i> |
| Ministry of Health | <i>Indirect Beneficiary</i> | <i>National Government Institution body</i> | <i>Online consultation on project document</i> | <i>Provided comments to MOPD</i> | <i>July 2023</i> |
| Addis Ababa university | <i>Partner</i> | <i>National Government Institution body</i> | <i>Online consultation on project document</i> | <i>Provided comments to MOPD</i> | <i>July 2023</i> |
| Ministry of irrigation and lowlands | <i>Indirect Beneficiary</i> | <i>National Government Institution body</i> | <i>Online consultation on project document</i> | <i>Provided comments to MOPD</i> | <i>July 2023</i> |
| National Disaster Risk Management Commission | <i>Indirect Beneficiary</i> | <i>National Government Institution body</i> | <i>Online consultation on project document</i> | <i>Provided comments to MOPD</i> | <i>July 2023</i> |
| Ethiopian Forest development | <i>Indirect Beneficiary</i> | <i>National Government Institution body</i> | <i>Online consultation on project document</i> | <i>Provided comments to MOPD</i> | <i>July 2023</i> |
| Ethiopian Space Science and Geospatial Institute | <i>Indirect Beneficiary</i> | <i>National Government Institution body</i> | <i>Online consultation on project document</i> | <i>Provided comments to MOPD</i> | <i>July 2023</i> |
| Central statistics Service | <i>Indirect Beneficiary</i> | <i>National Government Institution body</i> | <i>Online consultation on project document</i> | <i>Provided comments to MOPD</i> | <i>July 2023</i> |
| Ministry of innovation and Technology | <i>Indirect Beneficiary</i> | <i>National Government Institution body</i> | <i>Online consultation on project document</i> | <i>Provided comments to MOPD</i> | <i>July 2023</i> |
| Environmental Protection Authority | <i>Partner</i> | <i>National Government Institution body</i> | <i>Online consultation on project document</i> | <i>Provided comments to MOPD</i> | <i>July 2023</i> |
| Ministry of women and social affairs | <i>Indirect Beneficiary</i> | <i>National Government Institution body</i> | <i>Online consultation on project document</i> | <i>Provided comments to MOPD</i> | <i>July 2023</i> |

| | | | | | |
|---|-----------------------------|---|--|----------------------------------|------------------|
| Developmental partners (CRGE forum members and Private sectors/NGOs (PHE, CCRDA, CCE, Farm Africa, ILRI, Green tech Africa, etc.) | <i>Partner</i> | <i>National Government Institution body</i> | <i>Online consultation on project document</i> | <i>Provided comments to MOPD</i> | <i>July 2023</i> |
| Ethiopian agriculture research institute | <i>Indirect Beneficiary</i> | <i>National Government Institution body</i> | <i>Online consultation on project document</i> | <i>Provided comments to MOPD</i> | <i>July 2023</i> |
| Policy studies institute | <i>Indirect Beneficiary</i> | <i>National Government Institution body</i> | <i>Online consultation on project document</i> | <i>Provided comments to MOPD</i> | <i>July 2023</i> |
| Ethiopian meteorology institute | <i>Indirect Beneficiary</i> | <i>National Government Institution body</i> | <i>Online consultation on project document</i> | <i>Provided comments to MOPD</i> | <i>July 2023</i> |
| Ethiopian civil service university | <i>Partner</i> | <i>National Government Institution body</i> | <i>Online consultation on project document</i> | <i>Provided comments to MOPD</i> | <i>July 2023</i> |

(+) Add stakeholders as necessary

Stakeholder Consultation foreseen during project implementation²

| Stakeholder Name | Stakeholder Type | Stakeholder profile | Consultation Methodology | Consultation Findings | Date | Role |
|---|-----------------------------|---|--|--|-----------------------|---|
| Ministry of Planning and Development | <i>Direct Beneficiary</i> | <i>National Government Institution body</i> | <i>Online consultation on project document</i> | <i>Provided direct feedback to FAO</i> | <i>First 6 months</i> | Leading technical institution for report preparation |
| Ministry of Agriculture | <i>Indirect Beneficiary</i> | <i>National Government Institution body</i> | <i>Online consultation on project document</i> | <i>Provided comments to MOPD</i> | <i>First year</i> | Member of sectoral working group NIGHG* agriculture (AFOLU) |
| Ministry of Water and Energy | <i>Indirect Beneficiary</i> | <i>National Government Institution body</i> | <i>Online consultation on project document</i> | <i>Provided comments to MOPD</i> | <i>First year</i> | Member of sectoral working group NIGHG energy |
| Ministry of transport and logistics | <i>Indirect Beneficiary</i> | <i>National Government Institution body</i> | <i>Online consultation on project document</i> | <i>Provided comments to MOPD</i> | <i>First year</i> | Member of sectoral working group NIGHG energy |
| Ministry of industry | <i>Indirect Beneficiary</i> | <i>National Government Institution body</i> | <i>Online consultation on project document</i> | <i>Provided comments to MOPD</i> | <i>First year</i> | Member of sectoral working group NIGHG industry |
| Ministry of mines | <i>Indirect Beneficiary</i> | <i>National Government Institution body</i> | <i>Online consultation on project document</i> | <i>Provided comments to MOPD</i> | <i>First year</i> | Member of sectoral working group NIGHG industry |
| Ministry of urban development and infrastructure | <i>Indirect Beneficiary</i> | <i>National Government Institution body</i> | <i>Online consultation on project document</i> | <i>Provided comments to MOPD</i> | <i>First year</i> | Member of sectoral working group NIGHG land use (AFOLU) |
| Ministry of Health | <i>Indirect Beneficiary</i> | <i>National Government Institution body</i> | <i>Online consultation on project document</i> | <i>Provided comments to MOPD</i> | <i>First year</i> | Member of sectoral working group adaptation |
| Addis Ababa university | <i>Partner</i> | <i>National Government Institution body</i> | <i>Online consultation on project document</i> | <i>Provided comments to MOPD</i> | <i>First year</i> | Technical partner |
| Ministry of irrigation and low lands | <i>Indirect Beneficiary</i> | <i>National Government Institution body</i> | <i>Online consultation on project document</i> | <i>Provided comments to MOPD</i> | <i>First year</i> | Member of sectoral working group adaptation and mitigation |
| National Disaster Risk Management Commission | <i>Indirect Beneficiary</i> | <i>National Government Institution body</i> | <i>Online consultation on project document</i> | <i>Provided comments to MOPD</i> | <i>First year</i> | Member of sectoral working group climate change impacts |
| Ethiopian Forest development | <i>Indirect Beneficiary</i> | <i>National Government Institution body</i> | <i>Online consultation on project document</i> | <i>Provided comments to MOPD</i> | <i>First year</i> | Member of sectoral working group NIGHG land use (AFOLU) |
| Ethiopian Space Science and Geospatial Institute | <i>Indirect Beneficiary</i> | <i>National Government Institution body</i> | <i>Online consultation on project document</i> | <i>Provided comments to MOPD</i> | <i>First year</i> | Member of sectoral working group NIGHG land use (AFOLU) |

² Please include identification and consultations of disadvantage and vulnerable groups/individuals in line with the [GEF policy on Stakeholder Engagement](#) and [GEF Environmental and Social Safeguard](#).

| | | | | | | |
|---|-----------------------------|---|--|----------------------------------|-------------------|--|
| Central statistics Service | <i>Indirect Beneficiary</i> | <i>National Government Institution body</i> | <i>Online consultation on project document</i> | <i>Provided comments to MOPD</i> | <i>First year</i> | Technical partner |
| Ministry of innovation and Technology | <i>Indirect Beneficiary</i> | <i>National Government Institution body</i> | <i>Online consultation on project document</i> | <i>Provided comments to MOPD</i> | <i>First year</i> | Technical partner |
| Environmental Protection Authority | <i>Partner</i> | <i>National Government Institution body</i> | <i>Online consultation on project document</i> | <i>Provided comments to MOPD</i> | <i>First year</i> | Technical partner |
| Ministry of women and social affairs | <i>Indirect Beneficiary</i> | <i>National Government Institution body</i> | <i>Online consultation on project document</i> | <i>Provided comments to MOPD</i> | <i>First year</i> | Member of sectoral working groups adaptation and mitigation |
| Developmental partners (CRGE forum members and Private sectors/NGOs: PHE, CCRDA, CCE, Farm Africa, ILRI, Green tech Africa, etc.) | <i>Partner</i> | <i>National Government Institution body</i> | <i>Online consultation on project document</i> | <i>Provided comments to MOPD</i> | <i>First year</i> | Members of sectoral working groups adaptation and mitigation |
| Ethiopian agriculture research institute | <i>Indirect Beneficiary</i> | <i>National Government Institution body</i> | <i>Online consultation on project document</i> | <i>Provided comments to MOPD</i> | <i>First year</i> | Member of sectoral working group NIGHG agriculture (AFOLU) |
| Policy studies institute | <i>Indirect Beneficiary</i> | <i>National Government Institution body</i> | <i>Online consultation on project document</i> | <i>Provided comments to MOPD</i> | <i>First year</i> | Technical partner |
| Ethiopian meteorology institute | <i>Indirect Beneficiary</i> | <i>National Government Institution body</i> | <i>Online consultation on project document</i> | <i>Provided comments to MOPD</i> | <i>First year</i> | Member of sectoral working group climate change impacts |
| Ethiopian civil service university | <i>Partner</i> | <i>National Government Institution body</i> | <i>Online consultation on project document</i> | <i>Provided comments to MOPD</i> | <i>First year</i> | Technical partner |

* NIGHG: National Inventory of greenhouse gases

(+) Add stakeholders as necessary

ANNEX C: ENVIRONMENTAL AND SOCIAL SAFEGUARDS

Attached any screening documents or other ESS related documents (if applicable). ESS screening is not required for EAs but should be included if its available.

Title

GEF Approval_Request for Execution of Support Services
Environmental & Social Safeguard Screening