

A. GENERAL PROJECT INFORMATION	
Country	Indonesia
Region	Asia
Grant Title	Integrated Management of Peatland Landscapes in Indonesia (IMPLI)
Associated GEF Programme or Framework (FSP/MSP/IP/EA)	SFM/REDD+
Grant Type (select one from GEF Trust Fund, LDCF, SCCF)	Full size project GEF Trust Fund
<b>Reference numbers</b>	
PIR Implementation Status (1 <sup>st</sup> , 2 <sup>nd</sup> , 3 <sup>rd</sup> , 4 <sup>th</sup> , Final)	2 <sup>nd</sup>
GEF ID Number	9239
IFAD Grant Agreement	2000000957
<b>GEF Focal Area and Programme</b>	
GEF Focal Area <sup>1</sup>	Multi Focal Area
<b>Critical milestones</b>	
GEF CEO endorsement of FSP and approval of MSP	26 March 2019
IFAD approval date	8 April 2019
Actual implementation start date	22 <sup>nd</sup> July 2020
Last supervision mission date	The Implementation Support Mission was conducted on 4 <sup>th</sup> October 2022 to facilitate the project can accelerate the GEF6 IMPLI Project launching and the 1 <sup>st</sup> National Project Steering Committee (NPSC) meeting.
Expected/actual Mid-Term Evaluation date	August/September 2024
Expected project completion date	30 September 2025
Expected financial closure date (6 months after effective completion)	31 March 2026
<b>Grant Financing (USD)</b>	
GEF Project Preparation Grant (PPG) amount	USD 150,000
GEF grant amount	USD 4,895,872
Total GEF financing (PPG + Grant amount)	USD 5,045,872
First disbursement date	July 30, 2021
GEF grant disbursed (as at 30 June of FY)	USD 750,000
GEF grant spent (as at 30 June of FY)	USD 604,345.90
Proposed co-financing (as at CEO Endorsement)	USD 22,371,960
Actual co-financing secured (may be different from co-financing proposed at CEO endorsement)	USD 17,200,000 (from MOEF) USD 5,000,000 (from IFAD; TEKAD Project by Ministry of Village and MAHFSA as regional project)
Actual co-financing disbursed (as at 30 June of FY)	USD 923,338.31  Per 30 June 2023, the activities of IMPLI have received co-financing from: <ol style="list-style-type: none"> <li>1. Government of Indonesia: Peatland and Mangrove Restoration Agency Indonesia (BRGM) and Ministry of Agriculture (MoA),</li> <li>2. IFAD Project: MAHFSA Project, SMPEI, TEKAD</li> <li>3. Private Sector: Asia Pulp-Paper (APP), Pertamina, Riau Andalan Pulp &amp; Paper (RAPP)</li> </ol> The total of co-financing disbursement is estimated more than US\$ 3,000,000 based on the

<sup>1</sup> Select one among the following: Biodiversity; Climate Change; Land Degradation; International Waters; Chemicals and Waste; Multifocal area; Impact Programs.



Investing in rural people

## PROJECT IMPLEMENTATION REPORT (PIR) - GEF Project grants

### GEF Fiscal Year 2023 (01 July 2022 - 30 Jun 2023)

	calculation progress, and the detail co-financing will be submitted in the next report.
Actual co-financing spent (as at 30 June of FY)	July 2021 to June 2022 USD 923,338.31 July 2022 to June 2023 USD 2.313.784,18
GEF Project Preparation Grant (PPG) amount	
<b>Project contact</b>	
Name	C.H Nety Widayati, MT
Email	<a href="mailto:netybee@yahoo.com">netybee@yahoo.com</a>

GEF Fiscal Year 2023 (01 July 2022 - 30 Jun 2023)

B. CONTRIBUTIONS TO INNOVATION and LESSONS LEARNED	
<p>1. Information on progress, challenge and outcomes regarding engagement of stakeholders in the projects/program based on the description included in the Stakeholders Engagement Plan or equivalent documentation submitted at CEO Endorsement/Approval</p>	<p>Significant progress has been achieved by GEF6 IMPLI project during the period of July 2022 to June 2023 are:</p> <ol style="list-style-type: none"> <li>1. in January 2022, it was proposed by PMO to change one of the targeted locations from North Sumatra Province to South Sumatra Province with the justification that the North Sumatera area is not under managed by MoEF and converted as palm-oil plantation. The proposal from MoEF was agreed by GEF secretariat and got No Objection from IFAD. Based on this modality, in early (February 2022) the PMO has conducted a workshop and revised the organization structure to accommodate 3 provinces (Riau, Jambi and South Sumatra) as biggest peatland landscape in eastern of Sumatra Region.</li> <li>2. MoEF as an Executing Agency has established the National Project Management Office (NPMO) in July 2022.</li> <li>3. On 4<sup>th</sup> October 2022, MoEF has formally launched the <a href="#">GEF6 IMPLI Project</a>. The Director General of Pollution and Environment Degradation Control on behalf of the Minister launched the project. The event was attended by GEF OFP Indonesia as representative of GEF Secretariat, IFAD as implementing agency and multi-stakeholder who participated from national government, representative of the province &amp; district, donors, private sector and NGOs</li> <li>4. On 4<sup>th</sup> October 2022, back-to-back with the GEF6 IMPLI Project Launching, the project conducted the 1<sup>st</sup> National Project Steering Committee (NPSC) meeting. This meeting is aimed to consolidate the strategic planning of GEF6 IMPLI in order to prepare the implementation of project fin 2023 and to agree on the strategic issues of the project. The 1<sup>st</sup> NPSC meeting has resulted key points for: <ul style="list-style-type: none"> <li>• Approved the change in one of the targeted project locations from North Sumatera to South Sumatera.</li> <li>• Reviewed the Director General of Environmental Pollution and Degradation Control Decree No. 39/PPKL/SET/KLN.0/7/2021 regarding the Project Steering Committee members. Suggestions concerning the SC members modification, has resulted: 1) to add one of MoEF directorates as focal point (Directorate General of Nature Resources and Ecosystem Conservation, or DG KSDAE), 2) to add the Peatland and Mangrove Restoration Agency of Republic of Indonesia, 3) to add the Secretary of Research and Development Agency of MoEF, 4) Involvement of Environment and Forestry Agency in Province Level as the Province Focal Point, 5) The Provincial Planning and development Agency (Bapeda) didn't agree to be involved as the IMPLI Project SC member, but they will support the project in coordination.</li> <li>• Suggested to optimize the Technical Working Group (TWG) in Province Level as written in the Project Implementation Manual (PIM)</li> <li>• Recommended the Involvement of Province Environmental and Forestry Agencies as focal point of GEF6 IMPLI Project in targeted project's provinces.</li> <li>• Endorsed the AWPB-2023 of IMPLI-GEF6 Project to be submitted to IFAD.</li> </ul> </li> <li>5. In November 2022, the PMU has selected the targeted 12 villages within 4 districts (Siak, Bengkalis, Muaro Jambi and Musi Banyuasin). This is key modality by the project to develop baseline and Social-Environment &amp; Climate assessment (SECAP) that will be conducted in 2023.</li> <li>6. In December, GEF6 IMPLI has facilitated international workshop for share learning regarding the sustainable peatland management (SPM) attended by 10 ASEAN member states, 4 members of International Tropical Peatland Center, and at least 3 countries representative of G20 members. The event was opened by minister, GEF OFP Indonesia and the minister of environment from United Kingdom (UK). The 3 days event gives the better understanding and establish communication among of the countries whose has peatland.</li> <li>7. The Project has submitted the revision of Annual Work Plan and Budget (AWPB) and Procurement Plan (PP) for year 2022 (Proposed USD 626,281.) and has obtained No Objection</li> </ol>

GEF Fiscal Year 2023 (01 July 2022 - 30 Jun 2023)

	<p>from IFAD in November 2022.</p> <ol style="list-style-type: none"> <li>8. GEF6 IMPLI has submitted the AWBP-PP year 2023 with total request budget is USD 1,501,333 and received NOL from IFAD in April 2023.</li> <li>9. By June 2023, IMPLI GEF-6 has established the full team of (i) National Project Management Office (NPMO), (ii) Provincial Project Management Office (PPMO) in Riau, Jambi, South Sumatera, (iii) Project District Unit (PDU) in Siak, Bengkalis, Muaro Jambi, Musi Banyuasin, and (iv) Village Facilitator for 12 targeted villages.</li> <li>10. NPMO has conducted the Inception Workshop of GEF6 IMPLI in June 2023 and attended by all of GEF6 IMPLI project team, representative IFAD and relevant national stakeholders. During the Inception workshop, IMPLI gathered the best practice of implementation project from the GEF5 SMPEI, GEF6 SMPPEM and guidance from the national agencies.</li> <li>11. In this project period, we would like to report that Mrs. SPM Budisusanti has retired in March 2023 and the project is running-well that managed by interim project director (Mr. Tulus Laksono: Secretary of DG). During the daily operation, the project is handled by Mr. Muhamad Askary as Project technical Coordinator as pointed by MoEF.</li> </ol>																														
<p>2. Information on progress on gender-responsive measures and intermediate gender result areas as documented at CEO Endorsement/Approval including gender-sensitive indicators contained in the project results framework or gender action plan or equivalent.</p>	<p>GEF6 IMPLI Project has been accommodating gender issues during the entire process of the project implementation and recoded into the Monitoring &amp; Evaluation (M&amp;E) system. To incorporate gender responsive measurement into the project activities, the IMPLI Project has accommodated gender issues starting from the establishment of the project team for NMPO, PPMO, PDU, and Community Facilitator with gender balance composition to approximately 50% women: 50% Men. Percentage of women appointed as staff of GEF6 IMPLI has reached 48%, and rest of 52% is men. During the 2<sup>nd</sup> report period, it was calculated that the composition of women involvement as staff of IMPLI project is higher compare to the women staff proportion that was reported in previous the 1<sup>st</sup> Project Implementation Report (PIR).</p> <p>The project has been consistently encouraging participation of women in the project implementation i.e workshop, meeting, and training, especially for the 2<sup>nd</sup> PIR reporting period (July 2022 – June 2023). During the 2<sup>nd</sup> annual project period, the project has been calculating the involvement of women through three big events as presented in the table 1 below:</p> <p>Table 1. Calculation of women participation in the project implementation</p> <table border="1" data-bbox="506 1297 1495 1522"> <thead> <tr> <th>Participant/Event</th> <th>Share of Sustainable Management attended by 14 Countries</th> <th>Learning of Peatland (SPM)</th> <th>Launching of IMPLI GEF-6 Project</th> <th>Inception Workshop</th> </tr> </thead> <tbody> <tr> <td>Women</td> <td></td> <td>34</td> <td>46</td> <td>24</td> </tr> <tr> <td>Men</td> <td></td> <td>78</td> <td>56</td> <td>36</td> </tr> <tr> <td>Total</td> <td></td> <td>112</td> <td>102</td> <td>60</td> </tr> <tr> <td>Percentage of Women</td> <td></td> <td>30.3%</td> <td>45.09%</td> <td>40%</td> </tr> <tr> <td>Percentage of Men</td> <td></td> <td>69.7%</td> <td>54.91%</td> <td>60%</td> </tr> </tbody> </table> <p>The above table shows that the women proportion participating in all events of the IMPLI GEF6 project has reached more than 30%. Accordingly, this project has integrated gender responsive into the Project activities, and it also has met the national gender target which require involvement of women at events that should be accumulated up to above 30%. With the involvement of women (equal to men) in IMPLI Project events/activities, it is expected that the integrated management of sustainable peatland in Indonesia (which is driven by the IMPLI Project) will be acknowledged and implemented by the gender-balance multi-stakeholder. In addition, the participation of women is addressing the local knowledge/wisdom in regard to the culture in some part of the regions in Indonesia that the decision should also considering the women involvement.</p>	Participant/Event	Share of Sustainable Management attended by 14 Countries	Learning of Peatland (SPM)	Launching of IMPLI GEF-6 Project	Inception Workshop	Women		34	46	24	Men		78	56	36	Total		112	102	60	Percentage of Women		30.3%	45.09%	40%	Percentage of Men		69.7%	54.91%	60%
Participant/Event	Share of Sustainable Management attended by 14 Countries	Learning of Peatland (SPM)	Launching of IMPLI GEF-6 Project	Inception Workshop																											
Women		34	46	24																											
Men		78	56	36																											
Total		112	102	60																											
Percentage of Women		30.3%	45.09%	40%																											
Percentage of Men		69.7%	54.91%	60%																											
<p>3. Progress on the implementation of the project's KM approach approved at CEO Endorsement/Approval</p>	<p>During the 2<sup>nd</sup> PIR period (July 2022 – June 2023), project progress related Knowledge Management (KM) for the IMPLI Project are described as follows:</p> <ol style="list-style-type: none"> <li>1. Regarding the recruitment process of ME and KM Officer:</li> </ol>																														

	<p>a) The project has recruited the Monitoring and Evaluation (ME) officer (Ms. Diyane Astriani) and she has been working since 20<sup>th</sup> of May 2023.</p> <p>b) The Knowledge Management (KM) officer is in the recruitment process and expected to be ready in July 2023.</p> <p>2. Mr. Askary (Senior officer) as representative of the GEF6 IMPLI project joined the 4<sup>th</sup> Programme Steering Committee SUPA, 4<sup>th</sup> Programme Steering Committee MAHFSA, and 7<sup>th</sup> meeting of ASEAN Task Force on Peatlands (ATFP) on 6 – 8 September 2022 in Singapore. During the events, Mr. Askary shared the progress and results of GEF-5 SMPEI and GEF-6 IMPLI project that can contribute to the ASEAN programme on Sustainable Management of Peatland Ecosystems (APSMPE).</p> <p>3. Mrs. Fitri Harwati (senior officer) from MoEF on behalf of IMPLI project has participated at the 2<sup>nd</sup> meeting of post-COP15, entitled “The Fifteenth Meeting of the Parties (COP 15) Convention on Biological Diversity, the Tenth Meeting of the Parties (MOP-10) Cartagena Protocol, and the Fourth Meeting of the Parties (MOP-4) Nagoya Protocol, Montreal” on 13 – 20 December 2022, in Canada.</p> <p>4. Mr. Askary and Mr. Prabudi as representatives of Directorate Peatland Degradation Control, MoEF and IMPLI Project, have participated at the workshop entitled “2<sup>nd</sup> Workshop of The Sub-National Working Plan Development of Indonesia’s FOLU-Net Sink 2030, Jambi Province” on 27 – 29 September 2023, in Jambi Province which is relevant with the IMPLI project that will contribute to reduce the GHG emissions especially in the peatland ecosystems.</p> <p>5. Mrs. SPM Budisusanti, as IMPLI Project Director have attended bilateral meetings between MoEF and IFAD Headquarter on 5 December 2022 in Rome, Italia in regard to follow-up the communication on the SIPPEG as system to monitoring peatland management system and to informed that the IMPLI project is implementing by MoEF.</p> <p>6. Representatives of MoEF and IMPLI Project have participated in the “Workshop on Development of Dynamic Modelling Algorithm for Water Balance in Peatland Ecosystem” in Wageningen University of Research, which was held on 5 – 10 December 2022. The workshop aimed to discuss and exchange lessons learned about Ground Water Level (GWL) algorithm to be monitored by satellite imagery. From the workshop, there are several points which will be potential for future collaboration between WUR and MoEF, such as:</p> <ul style="list-style-type: none"> <li>• GHG Emission Measurement of Tier-3, based on multi-sector data collaboration.</li> <li>• Development of field school and Center of Excellence (CoE) for IMPLI Project targeted smallholder.</li> <li>• Developing Big-Data of Peatland Ecosystem under the collaboration with DG of Nature Resources and Ecosystem Conservation (Ditjen KSDAE) MoEF (to be linked between the SIPPEG and SIDAK).</li> <li>• Two private companies, Asia Pulp &amp; Paper (APP) and Riau Andalan Pulp &amp; paper (RAPP) joined this event.</li> </ul> <p>7. Representatives of Dit. PKEG (Directorate PDC) and IMPLI Project as delegations of MoEF, Indonesia attended the Conferences of the Parties (COP-27) in Sharm El-Sheikh Mesir on 6-18 November 2022. Director of PDC (IMPLI’s Project Director) has contributed at several events in Pavilion Indonesia as a speaker for the topics:</p> <ol style="list-style-type: none"> <li>1. Role of the Land and Forest Fire Management on Indonesia’s FOLU Net Sink 2030</li> <li>2. Multi-stakeholders Partnership on Conservation and Sustainable Management of Wetland Ecosystem</li> </ol> <p>Indonesia Achievement on Conservation and Sustainable Management on Peatland Ecosystem and the Center of Excellence for FOLU Net Sink 2030</p> <p>As a speaker at others Pavilion of other countries, with the topics:</p> <ol style="list-style-type: none"> <li>1. Enhance Climate Action Through Peatland</li> <li>2. Catalyzing Action on Protection the Planet’s Game Changing Ecosystem: Peatlands</li> <li>3. Sustainable Peatland Management: The Vision of the Congo Basin Countries and Opportunities of Collaboration</li> </ol> <p>Attending invitation from others side events of other countries:</p> <ol style="list-style-type: none"> <li>1. Malaysia Pavilion: Financing and Investment for Haze-Free Sustainable Land Management</li> <li>2. Japan Pavilion: All Japan Efforts to Manage Tropical Forests and Peatland Sustainably</li> </ol>
--	---

	<p>and to Establish International Rules of their Monitoring Methods</p> <ol style="list-style-type: none"> <li>8. IMPLI Project participated at the GEF-8 Asia Pacific Workshop on Integrated Program (APW) dan GEF-8 National Dialogue Indonesia (NDI). This event was conducted by GEF Secretariat and GEF OFP Indonesia on 8 – 19 January 2023, in Bali. The project has presented the collaboration between GEF5 SMPEI and GEF6 IMPLI regarding the Sustainable Peatland Management (SPM) as key important ecosystem essential and acknowledged by G20 to mitigate the Climate Change.</li> <li>9. Furthermore, the project has produced and printed 3 books during the period (July 2022 – June 2023), list of the books is detailing as below: <ul style="list-style-type: none"> <li>• Corrective action on peatland protection and management in Indonesia toward sustainable peatland management 2019 – 2020 with 265 unit and distributed during the G20 in 2022, UNFCCC-27 and launchinh IMPLI project in 2022.</li> <li>• (In Bahasa) Monografi: Penentuan Areal Puncak Kubah Gambut dan Perhitungan Volume Massa pada Kawasan Konservasi SM. Giam Siak Kecil – Bukit Batu di Provinsi Riau dan TN. Berbak-Sembilang di Provinsi Jambi dan Sumatera Selatan with 200 unit.</li> <li>• (In Bahasa) Status kerusakan ekosistem gambut dan prioritas lokasi pemulihan fungsi ekosistem gambut nasional tahun 2022 with 200 unit.</li> </ul> </li> </ol>
--	--

**C. IMPLEMENTATION PROGRESS**

<p><b>Implementation Progress Rating (IP)</b> Based on progress made for the given reporting period (HS/S/MS/MU/U or HU)</p>	<p>Marginally Satisfactory (MS)</p> <ul style="list-style-type: none"> <li>The project has been started with fundamental progress i.e changed the target location from north Sumatra to South Sumatra, compiling the data/information for the baseline project, recruited the operation team and conducted serial meetings with key stakeholders to enable and speeding-up the implementation.</li> <li>However, the project should put their focus and priority to have the project baseline, and focus to achieve the outcome and output as committed.</li> </ul>				
<p><b>Information on progress, challenges and outcomes on project implementation activities</b></p> <p><i>Achievements and impact to date – if applicable</i></p>	<p>During the report period (July 2022 – June 2023), IMPLI Project has been implementing activities with significant results compared to the previous period that most of project activities halt due to the Covid-19 in 2022 and getting better in 2023. The changing of the project director is a new challenge because the IMPLI project currently handle by the interim project director.</p> <p>This year period, the project is starting to accelerate project implementation by conducting pre-survey to identify the IMPLI project locations (especially villages), launching the project, attending workshops as well as attending bilateral meeting to mainstreaming the IMPLI Project to the national and international stakeholder for future collaboration. To elevate the project implementation, Inception Workshop has been carried out at the end of this reporting period. The workshop is part of project management timeline and as an initial coordination step to gathering the IMPLI Project National – Regional team.</p> <p>Project Progress and the achievements during this reporting period are as following:</p> <p>Outcome 1. Institutional Capacity, Frameworks, and Partnerships for Scaling Up of Sustainable Peatland Restoration Operational Output 1.1. Capacity Building of Key Stakeholders in Sustainable Peatland Management.</p> <p>Activities regarding mainstreaming the sustainability of peatland landscape management into the ministerial and other related institutions tasks are conducted during this period. One of them is supporting the development of Peat Ecosystem Protection and Management Plan (RPPEG) of Jambi Province. IMPLI Project has supported training event entitled “Accelerate the Development of RPPEG of Provinces and Districts/Cities in Jambi Province” which was held on 2 November 2023 in Aston Hotel, Jambi Province. Further, IMPLI Project will support series of activities of RPPEG for Musi Banyuasin District which currently is in progress.</p> <p>Outcome 2. Integrated Management of Priority PHUs in Project Provinces Sustained Output 2.1. Sustainable Integrated Management of the GSK-BB Peatland Landscape</p> <ul style="list-style-type: none"> <li>During this period, activity on inventory and participative mapping of Giam Siak Kecil Biosphere-Bukit Batu (GSK-BB) peatland landscape has been carried out. The activity is the determination of peat dome top areal and mass volume calculation of GSK-BB on Peatland Hydrological Unit (PHU) Sungai Siak Kecil and resulted: a) information about peatland distribution on the PHU, b) water balance of Sungai Siak Kecil PHU, and c) total hectare of peat dome top areal. This activity is part of inventory and participative mapping activities of two conservation areas, of which are Giam Siak Kecil Biosphere-Bukit Batu (GSK-BB) of Riau Province, and National Park Berbak-Sembilang of Jambi and South Sumatera Province. By August 2022, DPDC has produced the book entitled (in Bahasa) <i>Monografi: Penentuan Areal Puncak Kubah Gambut dan Perhitungan Volume Massa pada Kawasan Konservasi SM. Giam Siak Kecil – Bukit Batu di Provinsi Riau dan TN. Berbak-Sembilang di Provinsi Jambi dan Sumatera Selatan</i>. This book covered information about the peatland distribution on the PHUs, water balance and total hectare of peat dome top areal for 7 PHUs in Riau, Jambi, and South Sumatera Provinces.</li> <li>In regard with the hydrology management, IMPLI project has been working with the private sector and local communities to improve water management and forest and land fire control through the discussion of restoration documents and monitoring of restoration implementation in concession areas (3R: Rewetting, Rehabilitation, Revegetation and Natural Succession). There are 23 companies with a total of 801,345.36 ha area calculated. Name of the companies are as following:</li> </ul> <table border="1" data-bbox="358 1900 1243 1940"> <thead> <tr> <th>No</th> <th>Company</th> <th>Working Area</th> <th>Area (Ha)</th> </tr> </thead> </table>	No	Company	Working Area	Area (Ha)
No	Company	Working Area	Area (Ha)		

1	PT. Adindo Hutani Lestari	Forest Plantation	1,105
2	PT. AMP Plantation	Palm Oil Plantation	5,947
3	PT. Arara Abadi	Forest Plantation	148,712
4	PT. Asia Palembang Lestari	Palm Oil Plantation	2,272
5	PT. Asia Tani Persada	Forest Plantation	9,441
6	PT. Balai Kayang Mandiri	Forest Plantation	16,358
7	PT. Bina Daya Bentala	Forest Plantation	20,129
8	PT. Bukit Batu Hutani Alam	Forest Plantation	32,661
9	PT. Bumi Pratama Khatulistiwa	Palm Oil Plantation	4,748
10	PT. Cipta Narada Lestari	Palm Oil Plantation	-
11	PT. Daya Labuan Indah	Palm Oil Plantation	5,009
12	PT. Daya Tani Kalbar	Forest Plantation	43,597
13	PT. Dinamika Graha Sarana	Palm Oil Plantation	8,154
14	PT. Graha Agro Nusantara	Forest Plantation	20,142
15	PT. Hamita Utama Karsa	Palm Oil Plantation	-
16	PT. Kalimantan Subur Permai	Forest Plantation	13,417
17	PT. Mayawana Persada	Forest Plantation	60,026
18	PT. Mitra Hutani Jaya	Forest Plantation	9,401
19	PT. Perdana Inti Sawit II	Palm Oil Plantation	5,101
20	PT. Primatama Mulia Jaya	Palm Oil Plantation	1,941
21	PT. Riau Andalan Pulp and Paper	Forest Plantation	206,891
22	PT. Riau Abadi Lestari	Forest Plantation	1,448
23	PT. Rimba Harapan Sakti	Palm Oil Plantation	6,571
24	PT. Rimba Mandau Lestari	Forest Plantation	5,631
25	PT. Ruas Utama Jaya	Forest Plantation	39,807
26	PT. Sekato Pratama Makmur	Forest Plantation	46,227
27	PT. SPA Serapung	Forest Plantation	11,963
28	PT. SPA Simpang Kanan	Forest Plantation	77,629
29	PT. Subur Arum Makmur II	Palm Oil Plantation	12,018



30	PT. Sumatera Sawit Lestari	Palm Oil Plantation	7,001
31	PT. Suntura Gajapati	Forest Plantation	34,470
32	PT. Tempirai Palm	Palm Oil Plantation	7,104
33	PT. TH Indo Plantation	Forest Plantation	78,345
34	PT. Wirakarya Sakti	Forest Plantation	105,183
35	PT. Tripupa Jaya	Forest Plantation	21,558
36	PT. Sumber Hijau Permai	Forest Plantation	30,040
37	PT. Rimba Hutani Mas	Forest Plantation	35,814
38	PT. Global Alam Lestari	Ecosystem Restoration	22,280
39	Non-Forest Area		41,859
<b>Total Area</b>			<b>1,200,000</b>

- Activity to support the expansion of certified sustainable palm oil production in existing palm oil plantation at project location has been conducted by generating introduction of IMPLI Project to Plantation Agency of Riau Province, Agriculture Agency of Siak District, and Plantation Agency of Bengkalis District. This activity is carried out from 28 November 2022 to 3 December 2022 and summary of the series of meeting is listed as below:
  - Plantation Agency of Riau Province:
    - Big potential to integrate ISPO implementation with peatland management in smallholders landscape.
    - For peatland management to be integrated with ISPO certification, it can be applied in plasm areal of palm oil, however this needs mechanism to manage.
  - Agriculture Agency of Siak District:
    - There are 25 farmers organization that have been recorded by the Agriculture Agency and their palm oil plantations are being mapped.
    - Data of plasma plantations available at the Siak District Agriculture Agency are the data of PT PN and PT Kimia Tirta Utama plasma.
    - There are number of palm oil smallholders in Siak District and cannot be included in the Palm Oil Replanting Program (Peremajaan Sawit Rakyat/PSR) program.
  - Plantation Agency of Bengkalis District
    - Per 2021, there are approximately 172.000 ha of palm oil smallholder plantation (total of 50.000 households) in Bengkalis District
    - There are indications of the use of forest areas for plantation clearing.
    - Plantation Agency of Bengkalis District has issued a Cultivation Business Registration Certificate (STDB), with the following requirements:
      - ❖ Not located in a forest area
      - ❖ Land used according to its designation with direction from spatial planning agency.
      - ❖ A certificate from Ministry of Agrarian Affairs and Spatial Planning or Badan Pertanahan Negara to identified that the land is not in the Right to Cultivate (Hak Guna Usaha) and other ownership.
    - The issuance of this STDB does not require provisions for Peat Ecosystem Functions
    - None of the smallholder's palm oil plantations have received ISPO or RSPO certification.
    - The agency has not been able to provide data regarding the number of existing palm oil smallholder data because the Agency currently is collecting the data.
    - For palm oil smallholder who cannot get the PSR program because they are in the Peat Ecosystem Protection Function, their plantations businesses are still running, so it needs recommendations related to water management and follow-up on the community's plantation areas.

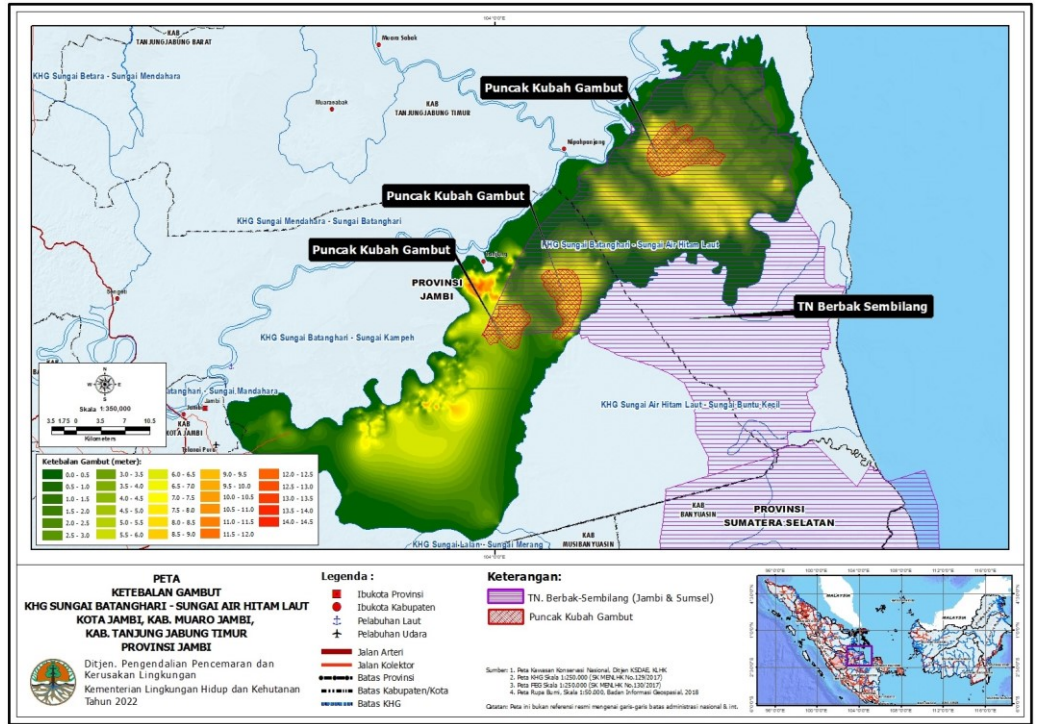
It was requested by the districts government in the project locations as early stage coordination that they need guidance regarding the palm-oil certification in the cultivation zone of peatland hydrology unit (PHU) in-order to support the well-management of palm-oil plantation through the rewetting or hydrology management. It will support for the activity under 2.1.6 as well as the 3.2.2 of IMPLI project

Output 2.2. Support development of integrated Project Peatland Protection and Management Plans in Jambi and South Sumatra Provinces.

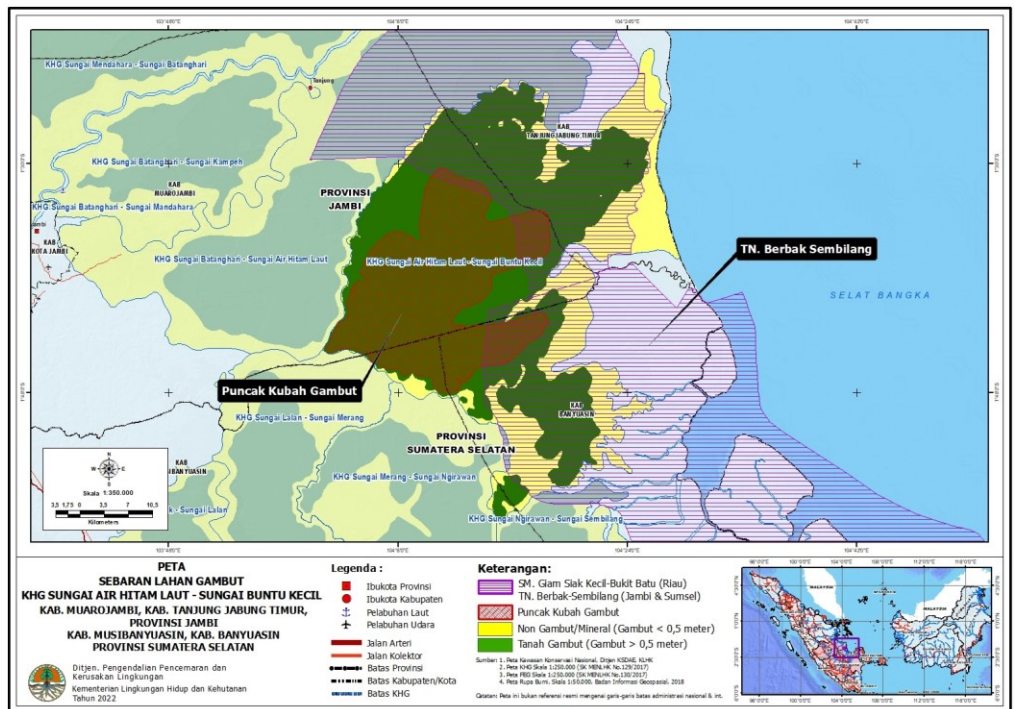
This period, IMPLI Project has identified and selected villages that will be appropriated for the project implementation in Jambi and Sumatera Province. Result of the selected villages is presented on the table below:

No.	Province	District	Sub-District	Village	Date
1.	South Sumatera	Musi Banyuasin	Bayung Lencir	Mangsang	23-27 August 2022
2.				Kepayang	
3.				Muara Merang	
4.				Muara Medak	
5.	Jambi	Muaro Jambi	Kumpeh	Kelurahan Tanjung	5-10 September 2022
6.				Gedong Karya	
7.				Jebus	
8.				Sungai Aur	
9.	Riau	Siak	Siak	Dayun	30 August-4 September 2022 & 21-25 September 2022
10.			Sungai Apit	Rawa Mekar Jaya	
11.		Bengkalis	Bandar Laksamana	Temiang	
12.			Talang Muandau	Tasik Serai	

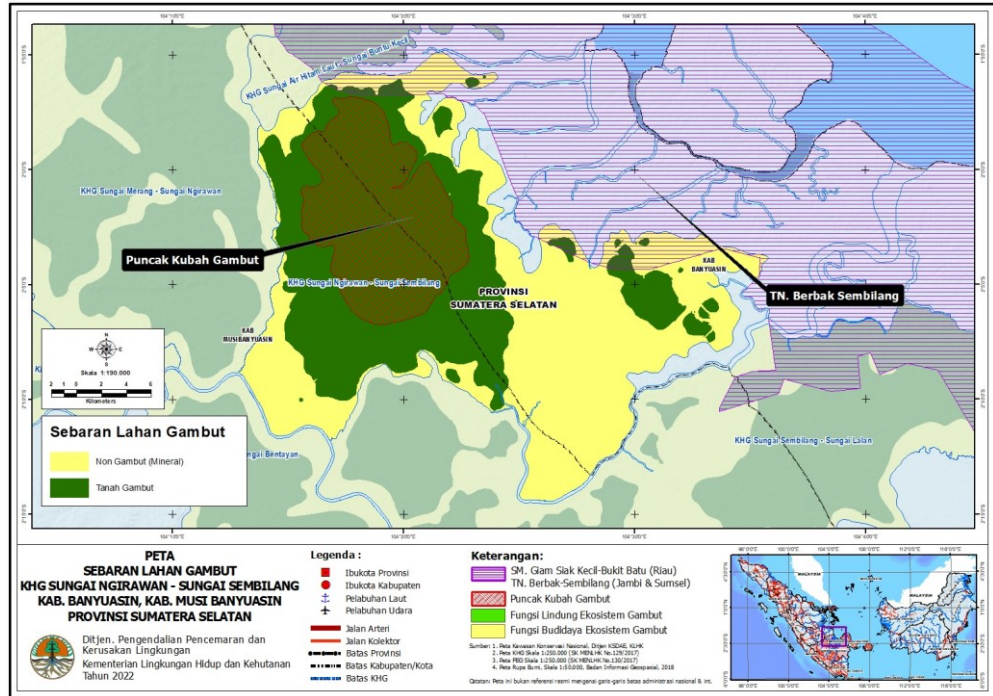
- One of activities were done regarding this output is the investigation of peat dome top area and mass volume calculation on:  
1) PHU Batanghari River - Air Hitam Laut River in Jambi Province.



2) PHU Sungai Hitam Laut - Sungai Buntu Kecil;



3) PHU Sungai Ngirawan - Sungai Sembilang



- In order to identify characteristics of peatland in each PHU, IMPLI Project team initiated the inventory for peatland ecosystem in companies' concession. This activity is also part of the co-financing of IMPLI Project from private sectors and involves them as our multi-stakeholder due to peatland ecosystem restoration activities. Inventory activities should be conducted to identify the function of peat landscape area, and to investigate whether in some area is intended to be the cultivation area (cultivation function) or protected areas (protected function). Inventory activities will be conducted to investigate the peatland ecosystem per PHU, on the concession (with private sectors) and non-concession areas (with the local communities). To date, the IMPLI Project working closely with private sectors has been carried out verification to follow up the inventory results of peat ecosystem characteristic in Jambi and South Provinces. Companies involving on these activities are:
  - PT Bumi Andalas Permai, on 27 June - 04 July 2022
  - PT SBA Wood Industries on 20 - 26 July 2022
  - PT Rimba Hutani Mas, PT Tripupa Jaya, PT Sumber Hijau Permai, Musi Banyuasin, SouthSumatera Province on 07-13 September 2022
  - PT Cahaya Sawit Sejahtera and PT Bintang Harapan Palman, South Sumatera Province on 27 September - 2 October 2022
  - PT Wirakarya Sakti on 5-9 December 2022
- From the field verification activities as above-mentioned, IMPLI Project and team of DPDC has discussed and resulted:
  - a. Final Data Spatial of Inventory Activities
  - b. Updating the 2022 Peatland Quality Index (in bahasa: Indeks Kualitas Ekosistem Gambut (IKEG) finalization data. The activity was carried out on 8 – 10 November 2022 in Bogor.

Outcome 3. Sustainable Peatland Management Knowledge, Technologies, and Market Developed, and Expanded Output 3.1. Platform and Database for Effective Stakeholder Communication on Peatland Policy and Management Based on the suggestion and information are gathered during the inception workshop as well as good practices from the GEF 5 SMPEI and private sectors,

- During the inception workshop, we gathered information and good practices from the GEF5 SMPEI and private sector. It was strongly suggested that IMPLI should establish a multi-stakeholder forum at the National and sub-national level. It can emphasis the existing modalities as developed by GEF5 SMPEI and local government in Riau, Jambi and South Sumatra.

Output 3.2 Technology and Markets for the Sustainable Use of Already Converted Peatlands

**Project Management**

- **Recruitment of IMPLI Team**

During this report period, the IMPLI team of PMU, PPMO, PDU, and Community Facilitator has been recruited. However, we are currently on progress recruiting the Knowledge Management Officer and program assistant.

- **Launching of IMPLI Project**

IMPLI Project launching event was conducted on 4<sup>th</sup> November 2022, aiming to:

1. Socialize IMPLI Project intervention in Riau, Jambi, and South Sumatera Province
2. Inaugurated the IMPLI Project for year 2020 – 2025.
3. Conducting the 1<sup>st</sup> National Steering Committee Meeting to support the IMPLI Project especially to the 2022 AWPB revision.

- **Socialization**

Socialization has been conducted by the DPDC and IMPLI PMO this period to introduce the project to the Provincial Project Management Office (PPMO) and Project District Unit (PDU) staff in South Sumatera, Riau, and Jambi Provinces on 4 May 2023. At this event, PMO and DPDC team presented the IMPLI Project background, objectives, key performance indicators, and project's location. In addition, AWPB year 2023 also be presented by the team to inform the PPMO and PDU team about IMPLI Project planned activities to be implemented in 2023. Besides, PMO administration staff presented about administration to the administrative staff of PPMO and PDU at the event. After the presentation was completed, it was continued by the signing of the contract for the PPMO and PDU IMPLI Project team.

- **Inception Workshop**

Inception workshop of IMPLI Project has been done on 19 – 23 June 2023

The objectives of the IMPLI - GEF6 Inception Workshop project are:

- 1) To develop common understanding on concept and implementation of IMPLI GEF 6 Project.
- 2) To adjust concept and implementation plan of the IMPLI GEF6 Project (Objectives, Outcome, Output) with existing conditions.
- 3) To develop milestones of IMPLI GEF6 Project implementation.
- 4) To get an understanding on administration procedure IMPLI Project implementation through training from different perspectives (Government of Indonesia and GEF) procedures, including:
  - (i) Program and activities, Monitoring dan Evaluasi (M&E), Knowledge Management and Communication (KMC)
  - (ii) Fiduciary: administration, financial, and procurement
- 5) To get lessons learned and best practices from GEF5 SMPEI implementation, and key partners.

**Financial**

Up to current reporting date (July 2022 – June 2023), total expenditure of IMPLI Project explained on the table below:

Year	Quarter	Total Expenditure (USD)
2021	Q1-Q4	43,451
2022	Q1-Q4	508,421
2022	Q1-Q2 (june)	52,456
<b>Total</b>		<b>604,346</b>

IMPLI Project Financial Documents for Fiscal year 2021 and 2022 have been audited by The Audit Board of the Republic of Indonesia or Badan Pemeriksa Keuangan (BPK). Before getting an audited document from BPK, the

	<p>IMPLI Project financial document was reviewed by the MoEF Inspectorate General Region 1 to get their review and suggestion.</p> <p><b>Challenges:</b></p> <ul style="list-style-type: none"> <li>• To run the project this year and next year will be coincidence with political year.</li> <li>• BPK usually use SAP Mechanism instead of IPSAS, this challenge is facing the problem when they conducted audit and reporting through the government system.</li> <li>• Full team of PMO IMPLI has completed or on board in May 2023.</li> </ul> <p><b>Outcomes on project implementation activities:</b></p> <ul style="list-style-type: none"> <li>• Improvement of financial systems on the planning, monitoring and reporting to make it more transparent and auditable.</li> <li>• Mapped the target locations in the landscape with 1,2 million hectar and identified the focus area to be inverted with 120,000 ha as well as tabulated the key stakeholders to be engaged.</li> <li>• We have the maps to guide the project with priority locations.</li> </ul>
<p><b>Recommendations to improve progress.</b></p>	<p>The IMPLI Project should:</p> <ol style="list-style-type: none"> <li>1. Develop the multi-stakeholder’s forum for better communication and further collaboration.</li> <li>2. Focus to prepare the baseline project and design the detail scenario implementation.</li> </ol>

	IMPLEMENTATION PROGRESS (IP)
<p><b>Highly Satisfactory (HS):</b></p>	<p>Implementation of <b>all</b> components is in substantial compliance with the original/formally revised implementation plan for the project. The project can be presented as “good practice”.</p>
<p><b>Satisfactory (S):</b></p>	<p>Implementation of <b>most</b> components is in substantial compliance with the original/formally revised plan except for only a few that is subject to remedial action.</p>
<p><b>Marginally Satisfactory (MS):</b></p>	<p>Implementation of <b>some</b> components is in substantial compliance with the original/formally revised plan with <b>some</b> components requiring remedial action.</p>
<p><b>Marginally Unsatisfactory (MU):</b></p>	<p>Implementation of <b>some</b> components is not in substantial compliance with the original/formally revised plan with <b>most</b> components requiring remedial action.</p>
<p><b>Unsatisfactory (U):</b></p>	<p>Implementation of <b>most</b> components is not in substantial compliance with the original/formally revised plan.</p>
<p><b>Highly Unsatisfactory (HU):</b></p>	<p>Implementation of <b>none</b> of the components is in substantial compliance with the original/formally revised plan.</p>

D. DEVELOPMENT OBJECTIVE RATING	
<p><b>Development objective Rating (DO)</b> Based on the likelihood that by the end of the project, implementation will achieve its stated objectives (HS/S/MS/MU/U or HU)</p>	<p><b>Marginally Satisfied:</b> the project has been starting the implementation and need to be focused for the baseline and develop the roadmap to achieve the targets.</p>
<p><b>Development Progress (DO)</b>  <i>Achievements and impact to date – if applicable</i></p>	<p>The development objective (DO) of IMPLI Project is strengthened system for sustainable management, biodiversity conservation, GHG emission reduction, and improved rural livelihoods in targeted peatland areas of Indonesia.</p> <p>All the above-mentioned implementation progress contributes to the achievement of the DO.</p>
<p><i>Recommendations to improve DO</i></p>	<p>To meet the target of:</p> <ol style="list-style-type: none"> <li>1. 1.2 million hectares of peatland landscape is managed and sustainably used to conserve biodiversity and ecosystem service and reduce greenhouse gas emissions.</li> <li>2. 4.31 million metric tons of CO<sub>2</sub>e mitigated.</li> <li>3. 5,000 smallholder households directly benefit through sustainable peatland management practices and livelihoods, and 15,000 households indirectly benefit through improved knowledge and access to markets (total of 20,000 households).</li> <li>4. Additional 120,000 ha of peatlands under an improved management regime (disaggregated by smallholder (20,000 ha, disaggregated by men/women smallholders) and concessionaire management (100,000 ha)</li> </ol> <p>The project has persevered in the project implementation to achieve the intended target. Points of activities we have been conducting and should be accomplished immediately, are:</p> <ol style="list-style-type: none"> <li>1. Developing the baseline study based on the targeted indicator and it will be completed approximately by the end of 2023.</li> <li>2. After the inception workshop, this project needs acceleration to catch up with all the project targets. To date, the project is carrying out a procurement process to choose sub-partners to undertake baseline survey, inventory activities, as well as system development.</li> <li>3. Adopted lesson learned from the GEF5 SMPEI Project best practices.</li> <li>4. Capacity building of NMPO, PPMO, PDU, and Community Facilitator as an initial step of the project implementation.</li> </ol>

	DEVELOPMENT OBJECTIVE (DO)
<b>Highly Satisfactory (HS):</b>	Project is expected to achieve or exceed <b>all</b> its major global environmental objectives, and yield substantial global environmental benefits, without major shortcomings. The project can be presented as “good practice
<b>Satisfactory (S):</b>	Project is expected to achieve <b>most</b> of its major global environmental objectives, and yield satisfactory global environmental benefits, with only minor shortcomings.
<b>Marginally Satisfactory (MS):</b>	Project is expected to achieve <b>most</b> of its major relevant objectives but with either significant shortcomings or modest overall relevance. Project is expected not to achieve <b>some</b> of its major global environmental objectives or yield some of the expected global environment benefits.
<b>Marginally Unsatisfactory (MU):</b>	Project is expected to achieve of its major global environmental objectives with major shortcomings or is expected to achieve only <b>some</b> of its major global environmental objectives.
<b>Unsatisfactory (U):</b>	Project is expected <b>not</b> to achieve <b>most</b> of its major global environment objectives or to yield any satisfactory global environmental benefits.
<b>Highly Unsatisfactory (HU):</b>	The project has failed to achieve, and is not expected to achieve, <b>any</b> of its major global environment objectives with no worthwhile benefits.



**E. KEY RISKS**

<p><b>Overall risk level</b></p>	<p>Based on the overall risk of factors internal or external to the project which may affect implementation or prospects for achieving project objectives (H/S/M o L) – See table 3 for rating criteria</p> <p><b>Medium Risk;</b> influence from the vulnerable ecosystems and integrate the policies in the national &amp; sub-national to be implemented and gives environment &amp; livelihood improvement.</p>																							
<p><i>List key risks and measures implemented to resolve it</i></p>	<table border="1"> <thead> <tr> <th data-bbox="440 457 740 489">Risk</th> <th data-bbox="740 457 899 489">Risk Level</th> <th data-bbox="899 457 1508 489">Mitigation Measures</th> </tr> </thead> <tbody> <tr> <td data-bbox="440 489 740 741">Weak enforcement of policies and regulations related to peatland management.</td> <td data-bbox="740 489 899 741"><b>Medium</b></td> <td data-bbox="899 489 1508 741"> <ul style="list-style-type: none"> <li>Awareness-raising on the impact of peatland degradation</li> <li>Awareness-raising of the new peatland regulations</li> <li>Enhancement of monitoring and enforcement measures through capacity building of responsible government units and clarifying the roles and responsibilities in the governance structure of multi-stakeholders.</li> </ul> </td> </tr> <tr> <td data-bbox="440 741 740 835">Lack of political will or poor governance</td> <td data-bbox="740 741 899 835"><b>Low</b></td> <td data-bbox="899 741 1508 835">Linking project activities closely with national policies and regulations and addressing issues prioritized by the country/province.</td> </tr> <tr> <td data-bbox="440 835 740 1077">Insufficient protection of ownership rights for communally managed peatland</td> <td data-bbox="740 835 899 1077"><b>Medium</b></td> <td data-bbox="899 835 1508 1077">The 2011 MK35 Constitutional Court decision determined that the forests should be returned to their customary owners. Customary forests (<i>hutan adat</i>) were legalized in 2016 and 2017 and the process of creating village forests is underway. The Project will follow comprehensive participatory approaches to land use classification and use allocation, including a Grievance Redress Process.</td> </tr> <tr> <td data-bbox="440 1077 740 1203">slow implementation of multi-stakeholder integrated management strategies</td> <td data-bbox="740 1077 899 1203"><b>Medium to High</b></td> <td data-bbox="899 1077 1508 1203">Careful selection of project partners (this will include local government agencies with demonstrated commitment to addressing peatland issues) and through close monitoring and guidance of project activities.</td> </tr> <tr> <td data-bbox="440 1203 740 1455">Natural calamities including flood and El Niño induced drought, lower output of peatland production and, in the case of drought, raise the risk of peatland fires</td> <td data-bbox="740 1203 899 1455"><b>Medium</b></td> <td data-bbox="899 1203 1508 1455"> <ul style="list-style-type: none"> <li>Fire prevention and suppression by sustainable peatland management and community stewardship, combined with better drought prediction and fire prevention measures.</li> <li>Focus on enhancing resilience of peatlands to future climate change scenarios through re-wetting.</li> <li>Adoption of climate-smart technologies and varieties</li> </ul> </td> </tr> <tr> <td data-bbox="440 1455 740 1581">Lack of sustainable, profitable paludiculture technology and associated commodity markets</td> <td data-bbox="740 1455 899 1581"><b>Medium</b></td> <td data-bbox="899 1455 1508 1581">The Project will support applied and participatory research into appropriate paludiculture technology and seek public-private partnerships, including “plasma farming” initiatives.</td> </tr> </tbody> </table>			Risk	Risk Level	Mitigation Measures	Weak enforcement of policies and regulations related to peatland management.	<b>Medium</b>	<ul style="list-style-type: none"> <li>Awareness-raising on the impact of peatland degradation</li> <li>Awareness-raising of the new peatland regulations</li> <li>Enhancement of monitoring and enforcement measures through capacity building of responsible government units and clarifying the roles and responsibilities in the governance structure of multi-stakeholders.</li> </ul>	Lack of political will or poor governance	<b>Low</b>	Linking project activities closely with national policies and regulations and addressing issues prioritized by the country/province.	Insufficient protection of ownership rights for communally managed peatland	<b>Medium</b>	The 2011 MK35 Constitutional Court decision determined that the forests should be returned to their customary owners. Customary forests ( <i>hutan adat</i> ) were legalized in 2016 and 2017 and the process of creating village forests is underway. The Project will follow comprehensive participatory approaches to land use classification and use allocation, including a Grievance Redress Process.	slow implementation of multi-stakeholder integrated management strategies	<b>Medium to High</b>	Careful selection of project partners (this will include local government agencies with demonstrated commitment to addressing peatland issues) and through close monitoring and guidance of project activities.	Natural calamities including flood and El Niño induced drought, lower output of peatland production and, in the case of drought, raise the risk of peatland fires	<b>Medium</b>	<ul style="list-style-type: none"> <li>Fire prevention and suppression by sustainable peatland management and community stewardship, combined with better drought prediction and fire prevention measures.</li> <li>Focus on enhancing resilience of peatlands to future climate change scenarios through re-wetting.</li> <li>Adoption of climate-smart technologies and varieties</li> </ul>	Lack of sustainable, profitable paludiculture technology and associated commodity markets	<b>Medium</b>	The Project will support applied and participatory research into appropriate paludiculture technology and seek public-private partnerships, including “plasma farming” initiatives.
Risk	Risk Level	Mitigation Measures																						
Weak enforcement of policies and regulations related to peatland management.	<b>Medium</b>	<ul style="list-style-type: none"> <li>Awareness-raising on the impact of peatland degradation</li> <li>Awareness-raising of the new peatland regulations</li> <li>Enhancement of monitoring and enforcement measures through capacity building of responsible government units and clarifying the roles and responsibilities in the governance structure of multi-stakeholders.</li> </ul>																						
Lack of political will or poor governance	<b>Low</b>	Linking project activities closely with national policies and regulations and addressing issues prioritized by the country/province.																						
Insufficient protection of ownership rights for communally managed peatland	<b>Medium</b>	The 2011 MK35 Constitutional Court decision determined that the forests should be returned to their customary owners. Customary forests ( <i>hutan adat</i> ) were legalized in 2016 and 2017 and the process of creating village forests is underway. The Project will follow comprehensive participatory approaches to land use classification and use allocation, including a Grievance Redress Process.																						
slow implementation of multi-stakeholder integrated management strategies	<b>Medium to High</b>	Careful selection of project partners (this will include local government agencies with demonstrated commitment to addressing peatland issues) and through close monitoring and guidance of project activities.																						
Natural calamities including flood and El Niño induced drought, lower output of peatland production and, in the case of drought, raise the risk of peatland fires	<b>Medium</b>	<ul style="list-style-type: none"> <li>Fire prevention and suppression by sustainable peatland management and community stewardship, combined with better drought prediction and fire prevention measures.</li> <li>Focus on enhancing resilience of peatlands to future climate change scenarios through re-wetting.</li> <li>Adoption of climate-smart technologies and varieties</li> </ul>																						
Lack of sustainable, profitable paludiculture technology and associated commodity markets	<b>Medium</b>	The Project will support applied and participatory research into appropriate paludiculture technology and seek public-private partnerships, including “plasma farming” initiatives.																						
<p><i>Recommendations to reduce risk level</i></p>	<p>Regarding risk level as above mentioned and a comprehensive mitigation measurement, the Project should develop and complete the safeguard through the Social, Environment, and Climate Assessment (SECAP).</p> <ol style="list-style-type: none"> <li>1. Gol formed the Peatland Restoration Agency (BRG) in 2016 and renewed as Peatland and Mangrove Restoration Agency (BRGM) in 2020 as one of the strong commitments of Gol to Peatland Management.</li> <li>2. The Project is planned to have multi-stakeholder forum to mitigate social conflict and increase awareness of multi-stakeholder regarding the needs of peatland integrated management strategies.</li> <li>3. MoEF has established the Peat Ecosystem Management Protection Information System (SIPPEG)</li> </ol>																							

	<p>which can provide an early warning system to inform about floods and fires happening in the project location.</p> <p>4. The Project is planned to work with research institutions to discover alternative products for smallholder which will be applicable with the peatland condition.</p>
--	---

<b>High Risk (H)</b>	There is a probability of greater than 75% that assumptions may fail to hold or materialize, and/or the project may face high risks.
<b>Substantial Risk (S)</b>	There is a probability of between 51% and 75% that assumptions may fail to hold and/or the project may face substantial risks.
<b>Modest Risk (M)</b>	There is a probability of between 26% and 50% that assumptions may fail to hold or materialize, and/ or the project may face only modest risks.
<b>Lowest Risk (L)</b>	There is a probability of up to 25% that assumptions may fail to hold or materialize, and/ or the project may face only modest risks.

<b>F. MEASURING FOR RESULTS</b> <i>As defined to the Annual Work Plan (AWP)</i>		
Main indicators	Target 2022-2023 AWP	Results in 2023
1.2 million hectares of peatland landscape sustainably managed	Baseline	<p>To date, IMPLI Project have mapped out PHUs in IMPLI Project location in Riau, Jambi, and South Sumatera Provinces. Detail name and <b>total hectares of the PHUs</b> are listed below:</p> <ul style="list-style-type: none"> <li>• Riau Province, GSK-BB Biosphere Reserve: 999.032 ha               <ol style="list-style-type: none"> <li>1. PHU Sungai Rokan-Sungai Siak Kecil, Total: 834.998 Hectares</li> <li>2. PHU Sungai Siak Kecil-Sungai Siak , Total: 164.034 Hectares</li> </ol> </li> <li>• Jambi and South Sumatra Province, National Park Berbak Sembilang: 528.442 ha               <ol style="list-style-type: none"> <li>1. PHU Sungai Batang Hari-Sungai Air Laut Hitam, Total:189.640 Ha</li> <li>2. PHU Sungai Merang-Sungai Ngirawan, Total : 81.878 Ha</li> <li>3. PHU Sungai Air Hitam Laut-Sungai Buntu Kecil, Total: 183.591 Ha</li> <li>4. PHU Sungai Ngirawan – Sungai Sembilang, Total: 73.333 Ha</li> </ol> </li> </ul> <p>Total hectares of PHUs: 1,527,474 Ha.</p>
4.31 million metric tons of CO <sub>2</sub> e mitigated.	Baseline	<p>To adopt and complete the GHG measurement from SMPEI (until tier-3) on the peatland.</p> <ul style="list-style-type: none"> <li>○ Mapped the targeted area as mentioned above.</li> <li>○ Compiling the data for the baseline i.e land use land cover in 2022 by MoEF</li> <li>○ Coordination with the GEF5 SMPEI and Director General of Climate Change Control (MoEF) regarding the proper/standard method to calculate the GHG and can be accepted by MoEF</li> </ul>

5,000 smallholder HHs directly benefit through sustainable peatland management practices and livelihoods, and 15,000 HHs indirectly benefit through improved knowledge and access to markets (total of 20,000 HHs)	Baseline	Have not been applied yet
Additional 120,000 ha of peatlands under an improved management regime (disaggregated by smallholder (20,000 ha, disaggregated by men/women smallholders) and concessionaire management (100,000 ha))	Baseline	Have not been applied yet

**G. For LDCF and SCCF projects only, please complete the following table**

Indicators <sup>2</sup>	Tick if applicable	Enter number  Please provide cumulative total achieved from the inception
Total number of direct beneficiaries (enter a number)	<input type="checkbox"/>	
Ha of land better managed to withstand the effects of climate change (enter a number)	<input type="checkbox"/>	
No. of risk and vulnerability assessments, and other relevant scientific and technical assessments carried out and updated (enter a number)	<input type="checkbox"/>	
No. of people trained to identify, prioritize, implement, monitor and/or evaluate adaptation strategies and measures (enter a number)	<input type="checkbox"/>	
No. of regional, national and sub-national institutions with strengthened capacities to identify, prioritize, implement, monitor and/or evaluate adaptation strategies and measures (enter a number)	<input type="checkbox"/>	
Contribute towards public awareness of climate change impacts, vulnerability and adaption (Tick if relevant)	<input type="checkbox"/>	
Expand access to improved climate information services (Tick if relevant)	<input type="checkbox"/>	
Expand access to improved climate related early-warning information (Tick if relevant)	<input type="checkbox"/>	
No. of regional, national and sector-wide policies, plans and processes developed or strengthened to identify, prioritize and integrate adaptation strategies and measures (enter a number)	<input type="checkbox"/>	
No. of sub-national plans and processes developed or strengthened to identify, prioritize and integrate adaptation strategies and measures (enter a number)	<input type="checkbox"/>	

**H. DOCUMENTS**

<sup>2</sup>Following the GEF guidance on results and indicators, please provide the whole results from the GEF project, which is made up of GEF financing as well as co-financing.



Investing in rural people

## PROJECT IMPLEMENTATION REPORT (PIR) - GEF Project grants

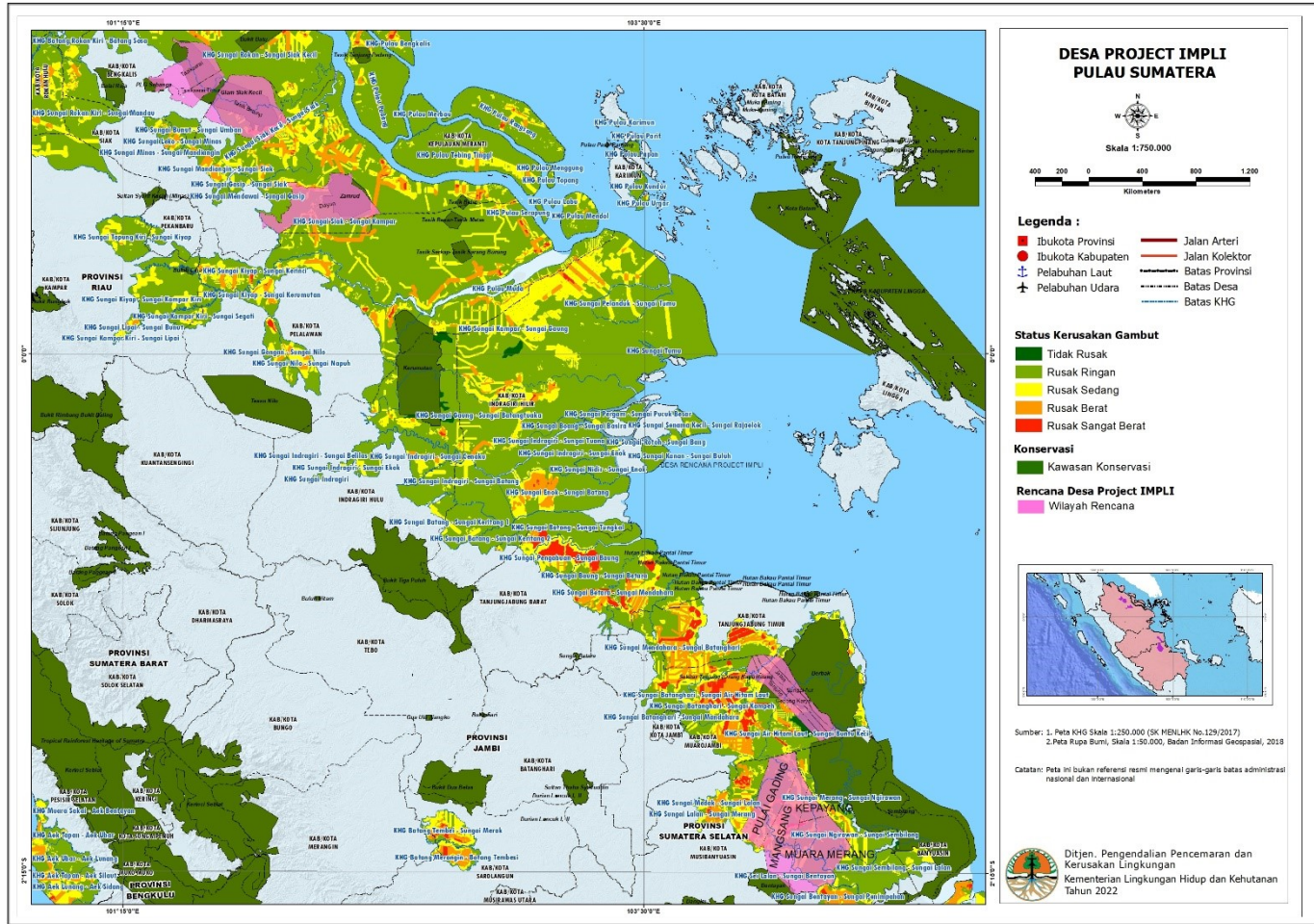
**GEF Fiscal Year 2023 (01 July 2022 - 30 Jun 2023)**

Please share any document pertaining to this PIR. Uploaded documents may also include any geospatial file or be linked to reported minor amendments, as appropriate.

**I. GEO LOCATION INFORMATION**

The Location Name, Latitude and Longitude are required fields insofar as an Agency chooses to enter a project location under the set format. The Geo Name ID is required in instances where the location is not exact, such as in the case of a city, as opposed to the exact site of a physical infrastructure. The Location & Activity Description fields are optional. Project longitude and latitude must follow the Decimal Degrees WGS84 format and Agencies are encouraged to use at least four decimal points for greater accuracy. Users may add as many locations as appropriate. Web mapping applications such as [OpenStreetMap](#) or [GeoNames](#) use this format. Consider using a conversion tool as needed, such as: <https://coordinates-converter.com> Please see the Geocoding User Guide by clicking [here](#)

Location Name (Provinces – Villages)	Latitude	Longitude	GEO Name ID	Location Description	Activity Description
Riau - Dayun	102.108279	0.650398	1405023011	Selected as Village Project	82.874,35 Ha
Riau - Rawa Mekar Jaya	102.324118	0.767069	1405030030	Selected as Village Project	8.252,88 Ha
Riau - Temiang	101.807550	1.384668	1408022002	Selected as Village Project	17.913,89 Ha
Riau - Tasik Serai	101.523203	1.243437	1408013008	Selected as Village Project	44.350,34 Ha
South Sumatera - Mangsang	103.940201	-2.039351	1606100028	Selected as Village Project	59.027,93 Ha
South Sumatera - Muara Merang	104.114168	-2.067184	1606100027	Selected as Village Project	102.686,02 Ha
South Sumatera - Kepayang	104.309996	-2.134813	1606100059	Selected as Village Project	64.145,10 Ha
South Sumatera - Muara Medak	103.772981	-1.979233	1606100042	Selected as Village Project	25.760,83 Ha
Jambi - Kelurahan Tanjung	104.099836	-1.493360	1505030014	Selected as Village Project	18.326,26 Ha
Jambi - Gedong Karya	104.138447	-1.494886	1505030015	Selected as Village Project	13.955,37 Ha
Jambi - Jebus	104.149701	-1.473126	1505030016	Selected as Village Project	16.982,19 Ha
Jambi - Sungai Aur	104.183682	-1.470630	1505030017	Selected as Village Project	13.639,07 Ha



Please provide any further geo-referenced information and map where the project interventions is taking place as appropriate.

**J. MINOR AMENDMENTS**

Minor amendments are changes to the project design or implementation that do not have significant impact on the project objectives or scope as described in Annex 9 of the Project and Program Cycle Policy Guidelines.

Each user selects any minor amendment that happened to a project during the latest fiscal year and provides a description of the minor amendment in a narrative format as appropriate in the related textbox. Users may also attach supporting documents as appropriate within the PIR module.

Select the boxes below and give some explanation to why you ticked it.

Minor Amendment	Explanation
• <input type="checkbox"/> Results Framework	None
• <input type="checkbox"/> Components And Cost	None
• <input type="checkbox"/> Institutional And Implementation Arrangements	None
• <input type="checkbox"/> Financial Management	None
• <input type="checkbox"/> Implementation Schedule	None
• <input type="checkbox"/> Executing Entity	None
• <input type="checkbox"/> Executing Entity Category	None
• <input type="checkbox"/> Minor Project Objective Change	None
• <input type="checkbox"/> Safeguards	Mapping the Indigenous People and Local Communities (IPLCs)
• <input type="checkbox"/> Risk Analysis	Minor for the risk analysis regarding the certification for the small-holders palm oil that requested by local/district government that can influence to the peatland management particularly on the hydrology management.
• <input type="checkbox"/> Increase Of GEF Project Financing Up To 5%	
• <input type="checkbox"/> Co Financing	
• <input type="checkbox"/> Location Of Project Activity	
• <input type="checkbox"/> Others	

