

1- Identification

1.1 Project details

GEF ID	4847	SMA IPMR ID	26579				
Project Short Title	Bahamas Pine Islands	Grant ID					
		Umoja WBS	GLF-11207-14AC0003-4E34				
Project Title	Pine Islands - Forest/mangrove Innovation and Intergration (Grand Bahamas, New Providence, Abaco and Andros)						
Project Type	<input checked="" type="checkbox"/> Full Sized Project (FSP)	Duration months	<table border="1"> <tr><td>Planned</td><td>48</td></tr> <tr><td>Age</td><td>95.3 months</td></tr> </table>	Planned	48	Age	95.3 months
Planned	48						
Age	95.3 months						
Parent Programme if child project		Completion Date	<table border="1"> <tr><td>Planned -original PCA</td><td>1-Nov-21</td></tr> <tr><td>Revised - Current PCA</td><td>30-Jun-24</td></tr> </table>	Planned -original PCA	1-Nov-21	Revised - Current PCA	30-Jun-24
Planned -original PCA	1-Nov-21						
Revised - Current PCA	30-Jun-24						
GEF Focal Area(s)	Biodiversity and Land Degradation						
Project Scope	<input checked="" type="checkbox"/> National						
Region	<input checked="" type="checkbox"/> Latin America and the Caribbean	Date of CEO Endorsement/Approval	8-Sep-15				
Countries	The Commonwealth of the Bahamas	UNEP Project Approval Date (on Decision Sheet)	12-Jun-15				
GEF financing amount	USD 2,853,425	Start of Implementation (PCA entering into force)	17-Nov-15				
Co-financing amount	USD 7,695,258	Date of First Disbursement	23-Feb-16				
		Date of Inception Workshop, if available	24-Feb-16				
Total disbursement as of 30 June	USD 2,123,023	Midterm undertaken?	<input checked="" type="checkbox"/> Yes				
Total expenditure as of 30 June	USD 1,734,003	Actual Mid-term Date, if taken	1-Jul-21				
		Expected Mid-Term Date, if not taken					
		Expected Terminal Evaluation Date	31-Aug-24				
		Expected Financial Closure Date	30-Dec-24				

1.2 EA: Project description

The project aims to build on recent advancements in the forestry sector by integrating biodiversity values, ecosystem services values and precepts of sustainable forest management and land-use into enhanced land-use planning in The Bahamas. The project addresses a number of environmental priorities through the following components:

Component 1: The institutional systemic support & associated capacity building

- a. The establishment of a forestry assessment and monitoring system which reduces the technical gap by contributing biodiversity and ecosystem services values into an updated inventory of forest ecosystems in the Pine Islands while sustainably monitoring Bahamian forest change in the long term;
- b. Integration of Sustainable Land-Use and Sustainable Forest Management principles into National Land-Use Planning thru development of 2 sub-national plans for Andros and New Providence, in accordance with Planning and Subdivisions Act 2010.

Component 2: The expansion and improved management of forest and mangrove sector:

- a. Facilitation of the establishment of the National Forestry Estate thru the gazettelement of 3 categories of Forest Reserves, Protected Forests and Conservation Forests. In addition, incremental support will be provided for the development of the National Forest Plan for the Forest Estate, and the targeted management planning for 15% of planned Conservation Forest comprising of 22,410 ha on two (2) pilot areas on Abaco and Andros using SFM/REDD+ principles of community co-management that is expected to increase the carbon sequestration up to 5,661,077 tCO₂ eq.
- b. Rehabilitation of Mangrove Ecosystem in Davis Creek, Andros comprising of 50 ha to restore ecosystem services and increase carbon sequestration up to 14,563 tCO₂ eq.

Component 3: Sustainable Livelihoods:

- a. Developing the concept of multi-functional conservation by enabling coastal communities thru effective provisioning of forest ecosystem services while promoting sustainable practices and community management of same. The two pilot projects are:
 - i. Native palm cultivation to support Indigenous Craft Industry on Andros and Grand Bahama
 - ii. Cascarilla bark Cultivation and Processing of Cascarilla Oil in Acklins and Crooked Islands.

1.3 Project Contact

Division(s) Implementing the project

Ecosystems Division

Executing Agency(ies)

Department of Environmental Planning and Protection

Name of co-implementing Agency

Names of Other Project Partners

Bahamas Agriculture and Industrial Corporation (BAIC), Bahamas National G.I.S. Centre (BNGIS), Bahamas National Trust (BNT), Department of Lands and Surveys (DLS), Forestry Unit, Department of Physical Planning (DPP) and Town Planning Committee (TPC)

TM: UNEP Portfolio Manager(s)

Ersin Esin (OIC)

EA: Manager/Representative

Dr. Rhianna Neely-Murphy

TM: UNEP Task Manager(s)

Christopher Cox

EA: Project Manager

Arnold A. Hamilton

TM: UNEP Budget/Finance Officer

George Saddimbah

EA: Finance Manager

Shenik Thompson

TM: UNEP Support/Assistant

Glortizel Frangakis

EA: Communications lead, if relevant

2- OVERVIEW OF PROJECT STATUS

2.1 UNEP PoW & UN

TM: UNEP Current Subprogramme(s)

Nature action subprogramme

TM: UNEP previous Subprogramme(s)

Healthy and productive ecosystems

iii.
Number of countries and national, regional and subnational authorities and entities that incorporate, with UNEP support, biodiversity and ecosystem-based approaches into development and sectoral plans, policies and processes for the sustainable management and/or restoration of terrestrial, freshwater and marine areas

TM: PoW Indicator(s)

EA: UNSDCF/UNDAF linkages

2022-2026 UN MSDF in the Caribbean includes Outcome 6 'Caribbean countries manage natural resources & ecosystems strengthening their resilience & enhancing the resilience & prosperity of the people and communities that depend on them' which is relevant to the objectives under this project

EA: Link to relevant SDG Goals

SDG Goal 13 Climate action:
•13.1 Strengthen resilience and adaptive capacity to climate related hazards and natural disasters in all countries
•13.2 Integrate climate change measures into national policies, strategies and planning
•13.3 Improve education, awareness-raising and human and institutional capacity on climate change mitigation, adaptation, impact reduction and early warning

EA: Link to relevant SDG Targets

SDG 15 Life on Land
•15.1 By 2020, ensure the conservation, restoration and sustainable use of terrestrial and inland freshwater ecosystems and their services, in particular forests, wetlands, mountains and drylands.
•15.6 Promote fair and equitable sharing of the benefits arising from the utilization of genetic resources and promote appropriate access to such resources, as internationally agreed
•Enhance global support for efforts by increasing the capacity of local communities to pursue sustainable livelihood opportunities

GEF Core or Sub Indicators

TM: GEF core or sub indicators targeted by the project as defined at CEO Endorsement/Approval, as well as results

Indicators
3: Area of land and ecosystems under restoration
landscapes under improved practices (excluding protected areas)
6: Greenhouse gas emissions mitigated

Targets - Expected value		
Mid-term	End-of-project	Total Target
not defined	50	50
not defined	22,459.50	22,459.50
not defined	5,661,077	5,661,077

Materialised to date
5
165,921
TBD at project end

2.2.1

--	--	--	--	--

Implementation Status

2023

7th PIR

	PIR #	Rating towards outcomes (DO) (section 3.1)	Rating towards outputs (IP) (section 3.2)	Risk rating (section 4.2)
FY 2023	7th PIR	S	S	L
FY 2022	6th PIR	MS	MS	L
FY 2021	5th PIR	MS	MU	M
FY 2020	4th PIR	MU	MS	M
FY 2019	3rd PIR	U	U	S
FY 2018	2nd PIR	U	U	L
FY 2017	1st PIR	MU	U	
FY 2016				
FY 2015				

2.3 Implementation status & Risk

EA: Summary of status
(will be uploaded to GEF Portal)

Outcome 1.1 Enhanced enabling environment in support of Sustainable Land Management (SLM) and Sustainable Forest Management (SFM) with integration of Biodiversity into land use planning: Draft land use plans for Andros and New Providence have been produced and submitted for approval and continued development. Land Use Plans for Andros are currently in the review phase. As noted in the previous PIR it's important to note that the project has no direct control over the process of The Government of The Bahamas adopting the proposed land use plans. Nevertheless, the project will continue to provide support to facilitate the eventual formal adoption, to the best of its ability. There has been sustained progress in the establishment of the Forestry Monitoring System. The Monitoring System has seen major improvement with the National Forest Inventory for Andros and Freeport field work completed. There has also been further development in the data analysis phase. This further development will also allow for the process of data to be integrated into the proposed portal/framework.

Outcome 1.2 Increased targeted public awareness of the importance and benefits of sustainably managing forest & mangrove biodiversity, ecosystems services and sustainable land management: Policy reports providing tools and policy strategies for the integration of BD into SLM/SFM for New Providence and Andros have been written, and these the policies, tools and methodologies for Andros have been discussed with several stakeholders in Andros. The Inter-American Development Bank finished creating its proposed toolkits for this effort. The tools developed by Inter-American Development Bank for Andros have been received and expected to be disseminated to the Department of Physical Planning and other necessary stakeholders during the first week in August 2023.

Outcome 2 Improved management effectiveness of existing and new forest reserves: The boundaries for the National Forestry Estate have been drafted however, verification has not yet been completed and more fieldwork is required. Dialogue with the Department of Lands and surveys have continued during this reporting period in an attempt to expedite the process. The gazettelement of the National Forest Estate and National Forest Plan is a legal mandate and required a revision of the end-project targets in this regard. The Davis Creek 2.3 Mangrove Restoration will be completed in November 2023. The Town Hall Meeting, Community event and training associated with this component is expected to be executed within October 2023. These activities will be completed with the assistance of the Forestry Unit from August 2023 to November 2023.

Outcome 3. Effective provisioning of forest ecosystems underpinned by strengthened livelihoods people dependent on use of forest resources - increased use of sustainable land, agroforestry and forestry management practices among coastal communities: The Sustainable Livelihoods component has seen major progress with the training on pilot site on Acklins Island with the communities assisting in the overall establishment of the plantation. Work under the project component continues to place particular emphasis on generating impact in terms of responsiveness to human rights and gender equity. Both the Red Bays and Acklins communities are set to realize major gender balanced representation. It should be noted that post the technical exchange between the GEF-funded St Lucia IYANOLA Project (GEF-ID 5057) and the Bahamas Pine Island project and Forestry Unit of The Government of The Bahamas in 2023, significant sharing of information took place. This sharing resulted in gaining new (proposed) best practices for the cultivation of Silver Top palm and well as suggestions regarding strategies that the Forestry Unit can possibly utilize to reduce possible future bottlenecks and / or issues that may arise in regards to capacity. This information will be passed on the Director of the Forestry Unit, with further interactions between the two organizations taking place throughout the rest of the year. This interaction can help create standardization in growing practices of the Silver Top palm as well as help create ideas for promotion of environmental stewardship among the people of Andros regarding the Pine Forests of the Island.

2.4 Co-finance

EA: Planned Co-finance

7,695,258

EA: Actual to date:

4,990,468.02

EA: Justify progress in terms of materialization of expected co-finance. State any relevant challenges.

There was co-financing mobilized only within the first half of the 2021-2022 report period where anticipated contributions remained lower than anticipated due to budget cuts in some partner agencies related to fallout from the COVID19 pandemic and implementation of fiscal controls due to inflation. Post the pandemic period financing slowly increased due to a relaxation of the cuts in the mentioned partner agencies. A noticeable rise in co-financing mobilization is expected to be seen during the rest of the year and the first half of 2024.

2.5. Stakeholder

EA: Date of project steering committee meeting

February 28th 2023
November 17th 2022
September 30th 2022
July 8th 2022

EA: Stakeholder engagement
(will be uploaded to GEF Portal)

Davis
A concentrated effort had been placed on stakeholder engagement during this reporting period. The Marketing Consultant for Component 3 Pilot 2 conducted stakeholder engagement in Acklins and Crooked Islands, This engagement was conducted on all levels to develop an average price for cascarilla bark and for cascarilla oil. The Marketing consultant's assessment allowed for international buyer listings for the locals to lock in higher prices for their products. Locals were also given the listening of the many items that can be created from the Cascarilla Bark and Oil. During November 2022 the Plantation consultant conducted work on Acklins and Crooked Island for the propagation and cultivation, during this time they met with locals harvesting in the community to determine the best harvesting techniques. The Bahamas Development Bank also travelled in November to Red Bays to speak with locals in regards to their vision for the Red Bays Silver Top Reserves. The Resource assessment was conducted by the Agricultural and Applied Sciences Consultant where the consultant spoke with Red Bay's locals to determine the site utilized for the harvest of silver top. Based on this data and scientific data a 80.4 ha site was selected for Establishment of the Red Bays Silver top Reserve. During March before Mangrove Action Projects training, the NPC along with the Forestry Unit travelled to Red Bays. During November 2022 both NPC and UNEP Task Manager and the Forestry Unit travelled to conduct stakeholder engagement in the Red Bays, Davis Creek, and Conservation Forest. The Forestry Unit has continued to travel to the Pine Islands (Andros, Abaco, New Providence, and Grand Bahamas to monitor the conservation and engage with stakeholders in an effort to finalize the Sustainable financial plan and the Conservation Plans for Andros and Abaco.

2.6. Gender

TM: Does the project have a gender action plan?

▼ No

EA: Gender mainstreaming
(will be uploaded to GEF Portal)

The project fosters balanced gender representation in the consultative processes, community meetings, and training of skills regarding the sustainable livelihoods component of the project. The project has been focused on targeting women and children in local indigenous communities particularly in the harvest of non-timber forestry product and the indigenous crafts trade. Andros, Red Bay's native female artisans were presented the opportunity to travel regionally through the project in March 2023 to build capacity in the indigenous crafts trade and marketing at the St. Lucia technical exchange. Additionally, local female students and youth at the Acklins Central High School where trained in November 2022 in cascarilla identification and propagation by consultants. Moreover, Mangrove Action Project trained and built capacity within the Central Andros local community during March 2023 in a "Community Based Ecological Mangrove Restoration" to improve the hydrology within Davis Creek ecosystem.

TM: Was the project classified as moderate/high risk at CEO Endorsement/Approval Stage?

▼ No

TM: If yes, what specific safeguard risks were identified in the SRIF/ESERN?

TM: Have any new social and/or environmental risks been identified during the reporting period?

▼ No

TM: If yes, please describe the new risks, or changes

TM & EA: Has the project received complaints related to social and/or environmental impacts (actual or potential) during the reporting period?

▼ No

TM & EA: If yes, please describe the complaint(s) or grievance(s) in detail including

EA: Environmental and social safeguards management
(will be uploaded to GEF Portal)

The project remains committed to maintaining environmental and social safeguards. The Inter-American Development Bank along with the Department of Physical Planning remains committed to the interaction of biodiversity values and land-use planning as demonstrated through the submission of 12 significant toolkits and future land-use development documents. Locals and administrators were crucial in the development of the tools and in land-use planning. Input was gained by conducting several town meetings and the revision of several related case studies. These are to interact with SFM and SLM (Component 1). The Forestry Unit has placed a concentrated effort on component 2 to successfully zone the conservation forest. Locals continue to show a vested interest in Component 2.3 the Restoration of Davis Creek through locals appearing at town-hall meetings and training for Davis Creek. The Mangrove Action Project consultants also trained the Grand Bahama and the Abaco communities to strengthen their capacities to restore and protect the mangrove ecosystem within the conservation forest. Component 3 has seen considerable momentum in Acklins with the establishment of the plantation and the installation of infrastructure for community usage. Parcels are to be submitted for pilot 1 Red Bays Silver Top Resource 200 acres and a nursery and greenhouse are slated to be developed on the site.

EA: Knowledge activities and products
(will be uploaded to GEF Portal)

The Southern island community (Acklins and Crooked Island) members were trained in sustainable harvesting methods for non-timber forestry products also regarding the historical and pharmaceuticals significance by the BAIC Sustainable livelihoods team and consultants. Additionally a marketing assessment for the cascarilla bark and oil was developed by the marketing consultant during the period from June 2022- January 2023, this document was submitted to the project stakeholders and presented to the local community. The document included a Buyer Listing to allow the community to directly lock in local and international buyers to maximize socioeconomic gain of the local harvesters and the established plantation and cascarilla reserve. Consultants conducted the establishment of the Plantation through selective land clearing, planting and propagation. Platinum Technology also installed a Green House and irrigation system on site. Mangrove Action Project also strengthened the capacity of the Local communities and the Forestry Unit during March 2023 by training and submitting documents to guide the restoration of Davis Creek's 50 ha.

EA: Main learning during the period

Mangrove Actions Project (Output 2.3) listed several recommendations to ensure Davis Creek's degraded land is restored. In part ensuring that the hydrology of Davis Creek is improved once these changes are implemented by the community and the consultant the site will increase in biodiversity, in particular the bird population, and increase usage as a nursery site for juvenile fish species. This observations were noted in November by the Davis Creek implementation consultant and Mangrove Action Project

Component 1 - BNGIS has collaborated with the Department of Environmental Planning and Protection and the Forestry Unit to ensure that Activity 1.1.1.6 is completed; allowing for spatial data and Carbon Data sets to be uploaded and freely accessible to the public and public agencies as requested by the project, this will prevent future land-use issue as both Department of Physical Planning and The Forestry Unit will determine land use via the open server before allowing zoning for development.

Component 3 - the St. Lucia technical exchange presented a unique opportunity for knowledge sharing resulting in the Bahamas team discovering that the Silvertop seed can be utilized in wine making as opposed to the the practice of disposing of the seeds. At the same time the St Lucia team discovered that the entire latanye plant (similar to the silvertop palm) can be utilized in the indigenous crafts trade. The Forestry Unit during stakeholder engagement for Abaco and Andros discovered conservation forests that are solely utilized by hunters and land that is utilized by Eco tourists. It is intended to incorporate this data in the Sustainable Financial Plan and their National Forest Plan for both those islands. This should result in effective zonation of the conservation forest and determine the type of infrastructure utilized on the sites, such as wooden boardwalks, trails gazebos, and signs (hunting zone, entrance, birding zone, nature trail, etc.).

Component 3 - Pilot 2 demonstrated effective implementation of the plantation/cascarilla reserve, this demonstrates that the success of this pilot should be duplicated for Pilot 1 Red Bay. The Resource assessment result for Red Bay Silver Top Reserve resulted in the selection of the Red Bays Silver Top Reserve site. The submitted socioeconomic assessment for Red Bay demonstrates that community members are prepared to act as the drivers and co-manage the intended Red Bay Silver Top Reserve 80.4 ha; with markets for indigenous crafts trade established locally and internationally.

2.9. Stories

EA: Stories to be shared
(section to be shared with communication division/
GEF communication)

In an effort to allow for knowledge sharing and training and capacity building between our regional partner in St Lucia in March 2023 the Sustainable Livelihoods team from the Bahamas travelled to St. Lucia for a technical exchange and In July 2023 the St. Lucia team travelled to the Bahamas. The initial preparation for the technical exchange began virtually from October 2022 and resulted in the development of a finalized practical 1-week technical exchange program. The Global Environmental Facility Projects (GEF), Bahamas Pine Islands Project, the Iyanola Project, and the South East Coast Project intended to cover several objectives in technical training and capacity building and dissemination of lessons learned for the usage of non-timber Forestry Product to allow for sustainable harvesting and promotion of crafts trade and sustainable harvesting of non-timber forestry products. Members from both the South East Coast St. Lucia Project and Iyanola (North East Coast) St. Lucia project then traveled to participate in a technical Exchange in the Bahamas. The events were well attended by technical staff and the local communities and members from the Red Bay Artisan Association, Acklins Cooperative, and BAIC list of registered crafters along with administrative and technical personnel from the St. Lucia Forestry Unit, The Bahamas Forestry Unit, and St. Lucia Artisans. During the technical exchange between the St. Lucia GEF IYANOLA project and the St. Lucia South East Coast Project & the Bahamas Pine Island Project, the key result was expanded knowledge and dissemination of information on sustainable harvesting strategies, value chains, marketing, branding, crafting techniques, plants identification, dying and liquor making, and winemaking. Among these topics were also the Access to Benefit Sharing Act and Traditional Knowledge and how countries can integrate the project and tools to protect indigenous pharmaceuticals and traditional knowledge. Saint Lucia is about to commence a GEF project on ABS and the exchange assisted with sharing information on the experience in The Bahamas with the national ABS Project. The GEF project has a degree of intersection resources were shared at all levels and capacity was strengthened for both countries resulting in many new lessons and potential strategies learnt.

3. RATING PROJECT PERFORMANCE

3.1 Rating of progress towards achieving the project outcomes (Development Objectives)

Project objective and Outcomes	Indicator	Baseline level	Mid-Term Target or Milestones	End of Project Target	Progress as of current period (numeric, percentage, or binary entry only)	EA: Summary by the EA of attainment of the indicator & target as of 30 June	TM: Progress rating
Objective							
Integrate Biodiversity Considerations & Ecosystem Services into Forest Management and Land Use Planning (4 Pine Islands: Grand Bahamas, New Providence, Abaco and Andros)		EA to fill	EA to fill	EA to fill	EA to fill	EA to fill	
Outcome 1							
OUTCOME 1.1 Enhanced enabling environment in support of Sustainable Land Management (SLM) and Sustainable Forest Management (SFM) with integration of Biodiversity into land use planning	2 sub national plans integrate BD and SFM	Implementation of Pine Islands land use plans does not integrate of sustainable land use, forest ecosystem services, and biodiversity values.	Draft of the 2 sub-national land use plans that integrate BD and SFM	Town Planning Committee implementation of Land Use Plans integrates sustainable land use, forest ecosystem services considerations, and biodiversity values.	95%	<p>The Parcels where completed and comprehensively reviewed in February 2023 by the Inter-American Development Bank, the Department of Physical Planning, Department of Environmental Protection and Planning, and the National Emergency Management Authority resulting in the completion of 12 comprehensive Toolkit Documents. The technical document that where submitted to the Island Administrators.</p> <p>The sub-national plans developed, however, are still in the review process. A new Urban Planer is engaged for completion of activities for Department of Physical Planning. As of the period June 2023 the Department of Physical planning indicated that The Pine Islands project must satisfy the requirement of the Planning and Subdivisions Act.</p> <ul style="list-style-type: none"> National Land Use policies, which were developed in 2010/2011, are not appropriate with the rate of climate change and current weather patterns. Changes have been proposed by Ministry of Works but they must be officially approved by law, which is in progress. The mechanism for this to happen would be the Law Reform Committee at the Ministry of Works. The focus currently is on reviewing the Planning and Subdivision Act, there was an effort proposed in 2016 and now it is being determined whether 	5
		Consolidated BD-1 Tracking Tool Score: SFM Tracking Tools Score: 4 LD-3 Tracking Tools Score: 5	Consolidated BD-1 Tracking Tool Score: SFM Tracking Tools Score: 5	Consolidated BD-1 Tracking Tool Score: 259 SFM Tracking Tool Score: 6 LD-3 Tracking Tools Score: 8			

<p>Output 1.1.1 Assessment and monitoring system (GIS); database of forestry lands with biodiversity overlay, including mangroves.</p>	<p>Establishment of Carbon and Forestry monitoring systems</p>	<p>Baseline data gathered in National Forest Inventory and remaining data to be gathered by IDB.</p>	<p>Available data collected, consolidated and collated. Draft framework available for review. Conducted Remote Sensing to determine carbon values</p>	<p>Open source framework accessible to all agencies of forest resources which integrates ecosystem services and biodiversity data. Developed GIS datasets using Remote Sensing analysis</p>	<p>95%</p>	<p>FAO conducted a silvometrics workshop in February 2023 to assist with determining Carbon Biomass Data for each forestry estate based on data collected during the National Forest Inventory. The BNGIS open source framework consultant contract is reviewed and finalized to be advertised October 2023; this expertise acquisition will result in freely accessible forestry maps and carbon biomass data which will aid the country in accessing the carbons trade market.</p>
<p>Output 1.1.2 Inter-agency system established and capacity built to enable trade off analyses for sustainable land management planning at the landscape levels in 2 sub-national plans</p>	<p>An Integrated GIS framework for all agencies in regards to Forestry Resources Sub national land-use plans for Andros and New Providence Enhance capacity</p>	<p>No Forestry in existing GIS framework No comprehensive land-use plans that incorporate biodiversity and conservation areas exist for Andros or New Providence Limited technical capacity</p>	<p>Data collection completed Draft of the 2 sub-national land use plans that integrate BD and SFM Capacity needs assessment carried out</p>	<p>Developed an open-source framework for all agencies to have access to Forestry data and Land-Use plans Town Planning Committee implementation of Land Use Plans integrates sustainable land use, forest ecosystem services considerations, and biodiversity values. 75% of the Town Planning Committee and Family Island Administrators received training</p>	<p>80%</p>	<p>Land Use plan for Andros and New Providence in review phase. Urban Planner engaged to complete remaining land use plan activities. G.I.S. consultant engaged to build capacity for data gathered by the Forestry Unit. BNGIS awaiting data to place information on to the Bahamas National Geographic Information Systems portal's open source framework. GIS consultant contract is approved to allow Forestry Maps and Data set to be placed BNGIS Open source Framework.</p>
<p>OUTCOME 1.2 Increased targeted public awareness of the importance and benefits of sustainably managing forest & mangrove biodiversity, ecosystems services and sustainable land management</p>	<p>Public Awareness</p>	<p>Community awareness of basis decision making limited</p>	<p>Tools and training modules developed Baseline awareness Surveys completed</p>	<p>Public awareness activities Local Island Administrators on Andros and Abaco increased by 50% over baseline.</p>	<p>65%</p>	<p>Public outreach has been done by the Forestry Unit and BAIC through press releases, radio interviews and direct stakeholder engagement. Advocacy based tangibles and signage to be used to raise awareness is also being made a priority.</p>

S

<p>Output 1.2.1 Tailored tools, methodologies, and training for integration of biodiversity into forest management/ land use management</p>	<p>Tools and Training for capacity enhancement in the areas of sustainable land use, forest ecosystem services, and biodiversity values.</p>	<p>No tools or training modules in the areas of sustainable land use, forest ecosystem services, and biodiversity values</p>	<p>Capacity needs assessment conducted Developed training modules workshop With Planning Consultant/DPP, FU, BEST BNGIS, and DLS</p>	<p>Public awareness activities Local Island Administrators on Andros and Abaco increased by 50% over baseline.</p>	<p>65%</p>	<p>Project partners committed to strengthening public awareness with two awareness building campaigns in December 2022 by the Department of Environmental Planning and Protection and the Forestry Unit. The Forestry Unit conducted Forestry Awareness Month where interviews were broadcasted on local television and radio. Mangrove Action Project conducted training for the three main pine islands to address the capacity need for, Andros, Grand Bahama and Abaco. The sustainable Livelihood team conducted two Technical exchanges both on the regional level and at the Local Level. These sessions were utilized and broadcasting partially on local television and resulted in a short infomercial. The technical exchange increased the capacity of locals in the indigenous crafts trade and the sustainable harvest of non-timber forestry product.</p>	
<p>Output 1.2.2. Awareness building modules -- benefits of sustainable land use and forest management.</p>	<p>Awareness built of benefits of sustainable land use, forest ecosystem services and biodiversity values.</p>	<p>Low awareness and no communication strategy</p>	<p>Conduct baseline surveys within communities Development of communication strategy and action plan</p>	<p>30% Increased Awareness in Targeted Communities based on Surveys</p>	<p>70%</p>	<p>Davis Creek Town Hall meeting hosted in February 2023 to inform the community of the proposed restoration for the mangrove Ecosystem. Forestry Unit committed to conduct stakeholder engagement with hunters, birders etc. to effectively determine land use for the conservation forest. Sustainable Livelihood project team committed to training local indigenous communities by two technical exchanges and having consultants train and build capacity with local communities. Forestry Unit continue to conduct interview and infomercials to continue to disseminate information on forest integration and innovation.</p>	
<p>Outcome 2 Improved management effectiveness of existing and new forest reserves</p>	<p>BD-Tracking Tool SFM Tracking Tool</p>	<p>Consolidated BD-1 Tracking Tool Score: 140 SFM Tracking Tool Score: 4</p>	<p>Consolidated BD-1 Tracking Tool Score SFM Tracking Tool Score</p>	<p>Consolidated BD-1Tracking Tool Score:259 SFM Tracking Tool Score:6</p>	<p>n/a [to be assessed near project close]</p>	<p>Forestry Unit in conjunction with the ICCF developing two sub conservation plans and two sustainable financial plans for Abaco and Andros.</p>	<p>MS</p>

<p>Output 2.1: Establishment of National Forestry Estate inclusive of Conservation & Protected Forests.</p>	<p>Establishment of National Forestry Estate inclusive of Conservation & Protected Forests</p>	<p>The Forestry Act 2010 speaks to these designations. Cabinet conclusion directing Forest Department to gazette national forestry estate</p> <p>Gazettement falls Outside the project timeframe based on recommendation.</p>	<p>Draft boundaries for estimated total of 283,750.2 ha (Conservation Forests = 149396.99 ha (52.65% of forestry Estate) & Protected Forests= 37810.58 ha) (13.33%) for Forestry Estate</p>	<p>Gazettement of National Forestry Estate (GEF supports Conservation & Protected Forests and GOB supports Forest Reserves) Vesting of Forestry lands into Ministry of Environment and Housing</p>	<p>40%</p>	<p>Boundaries Surveyed and submitted to AG office. Output 2.1 amended from the "gazettement" to the "submission" of boundaries for the National Forestry Estate. The Forestry Unit is committed to monitoring and the approval of the estate area. The New Providence National conservation forest has been subject to conflictive land use issues and is under continual encroachment on while the reserves on Abaco, Grand Bahama and Andros are not encroached on and are protected via crown's grant.</p>	
<p>Output 2.2 - Community co-management of 2 Conservation forests (representing 15% of Conservation Forests) Abaco: Blue Hole Conservation Forest, 8,094 ha Central Andros: Maiden Hair Conservation Forest, 14,316 ha Estimated CO2 savings up to 5,661,077 tCO2-eq for 30 years</p>	<p>Management Plans developed and implemented taking into account balanced gender roles and opportunities</p>	<p>No Community management plans Baseline CO2eq</p>	<p>Gazettement of target Forest areas (Blue Hole Conservation Abaco and Maiden Hair, Andros) & community consultations underway EXACT figure CO2eq in 2 yrs</p>	<p>Forest Conservation Plans signed, adopted and implemented by Communities. EXACT figure CO2eq in 4yrs</p>	<p>35%</p>	<p>National Forest Management Plan developed and submitted to the Ministry of Environment and Natural Resources. The Forestry Unit remain committed and continue to monitor and conduct stakeholder engagement with locals such as the hunters and birders that utilize the national forestry Estate.</p>	
<p>Output 2.3: Restoration of Andros Davis Creek Mangrove system (50 ha) with CO2savings up to 14,563 tCO2eq</p>	<p>The area and condition of mangrove forests</p>	<p>Degraded mangrove system, limited ecosystem services provisioning Baseline CO2eq</p>	<p>Culverts cleaned out. Invasive species removed. Establishment of nursery EXACT fig CO2eq in 2 yrs</p>	<p>50 hectares of degraded mangrove restored. Carbon stock increase of up to 14,563 tCO2 eq. EXACT fig CO2eq in 4yrs</p>	<p>50%</p>	<p>Davis Creek Consultant developed Gap Assessment and initiated implementation of works for restoration of Davis Creek Ecosystem in May 2023. Mangrove Action Project conducted Training and Capacity building during March 2023 for the Andros community in the restoration technique "Community Based Ecological Mangrove Restoration" in an effort to train local to restore the hydrology of the degraded land. Community members have also developed a community network to monitor the ecosystem.</p>	

<p>Outcome 3 Effective provisioning of forest ecosystems underpinned by strengthened livelihoods people dependent on use of forest resources - increased use of sustainable land, agroforestry and forestry management practices among coastal communities</p>	<p>Integrated landscape management practices adopted by local communities taking into account balanced gender roles and opportunities</p>	<p>Unsustainable and uninformed harvesting of non-timber forest products (NTFPs).</p>	<p>Data and guidelines for sustainable models of NTFPs developed</p>	<p>Sustainable practices adopted in 2 Pine Island communities</p>	<p>60%</p>	<p>Resource assessment for the Southern islands and Andros completed. Acklins Cascarilla Reserve has new infrastructure installed with green houses and a irrigation system along with a Cascarilla Community Management Plan to guide utilization of the plantation site/reserve. Marketing consultant has submitted an international marketing plan with buyer identification to Acklins community member to help facilitate their ability to sell oils, perfumes, soaps, liqueurs etc directly to international buyers..</p>	<p>5</p>	
<p>Output 3.1 Pilot Model Sustainable Cultivation of Native Palms</p>	<p>Application of sustainable practices in forest communities of the Pine Islands taking into account balanced gender roles and opportunities</p>	<p>Unsustainable and uninformed harvesting of non-timber forest products (NTFPs).</p>	<p>Data and guidelines for sustainable models of NTFPs developed</p>	<p>Sustainable practices adopted in 2 Pine Island communities</p>	<p>55%</p>	<p>Completion of the Resource Assessment and Socioeconomic assessment has resulted in the identification of the intended 200 acres (80.9 ha) for Red Bays Cascarilla Reserve, plan is being initiated to install green house and nursery after Crown Land is granted as a non-timber forestry reserve for Red Bays community members.</p>		
<p>Output 3.2 Pilot Model Sustainable Cascarilla Cultivation and Processing</p>	<p>Application of sustainable practices in forest communities of the Pine Islands taking into account balanced gender roles and opportunities. 10 ha in Acklins and 10 ha in Crooked Island</p>	<p>Unsustainable harvesting of cascarilla bark prohibits regeneration and limiting productivity. No baseline data. 200 acres of property granted in Crooked Island, Hard Hill Settlement.</p>	<p>Sustainable model of harvesting developed on the basis on gathered data. Gender disaggregated socio-economic survey for surrounding communities</p>	<p>Joint community/forestry unit monitoring of 20 ha in Acklins and 20 ha in Crooked Island 35% Increase in persons engaged in NTFPs and community level income (gender disaggregated)</p>	<p>75%</p>	<p>The Sustainable Livelihood team continued to build momentum for this output after financial mobilization, developing infrastructure, and technical support for the southern island (Acklins and Crooked Island). During this period a Green House and irrigation system along with access roads and selective land clearing where installed on the Spring Point Cascarilla Reserve to allow the community to utilize the Cascarilla Reserve site. A community co-management plantation plan was also developed by the consultant.</p> <p>Sustainable livelihood consultant completed several pivotal project documents and deliverables during this period: Socioeconomic assessment, the Cascarilla Resource Assessment, Cascarilla Management Plan.</p>		

For joint projects and where applicable ratings should also be discussed with the Task Manager of co-implementing agency.

3.2 Rating of progress implementation towards delivery of outputs (Implementation Progress)

Output	Expected completion date	Implementation status as of 30 June 2022 (%) (Towards overall project targets)	Implementation status as of 30 June 2023 (%) (Towards overall project targets)	EA: Progress rating justification, description of challenges faced and explanations for any delay	TM: Progress rating
Under Comp 1					
Output 1.1.1: Assessment and monitoring system (GIS); database of forestry lands with biodiversity overlay, inc mangroves					MS
Activity 1.1.1.1: Development of work plan and acquirement of geospatial data for proceeding activities for entire project	28-Feb-21	100%	100%	Completed	
Activity 1.1.1.2: Identification and demarcation of boundaries through field assessments, GPS coordinates and utilizing GIS to update 1986 forestry maps to create maps of the forest estate (demarcation will require legal action and gazetting of the proposed boundaries).	31-Oct-21	100%	100%	Completed	
Activity 1.1.1.3: Conduct remote sensing analysis to determine true Carbon sequestration values and sensing analysis of forestry lands	30-Nov-23	55%	65%	FAO conducted training for the calculation of the Carbon Biomass Data in an effort to determine true carbon sequestration rate for the National Forestry Estate area.	
Activity 1.1.1.4: Develop Forestry Maintenance Plan for Forestry dataset	30-Nov-23	40%	60%	FAO signed second contract to complete the Forestry Maintenance Plan and Dataset. Training was hosted regarding the SilviMetrics Software. Carbon Data workshop	
Activity 1.1.1.5: Develop Forestry Monitoring system within the established Forestry Estate	30-Nov-23	55%	70%	The FAO conducted training to calculate carbon biomass data in the National Forestry Estate. FAO provided guidance on how to utilize the SilviMetrics Software during February 2023 to enhance the Forestry Monitoring Systems.	
Activity 1.1.1.6: Develop and implement open source framework accessible to all agencies, using data developed in previous activities	30-May-24	10%	15%	BNGIS Contract developed. Consultants engaged to facilitate the submission of maps and monitoring systems and other relevant information developed onto BNGIS portal/Open source framework. Awaiting Forestry Unit's data to be finalized to be uploaded to provided for the portal	
Output 1.1. 2: Development of Land-Use Plans for 2 islands which integrates biodiversity, ecosystem services and forestry at the landscape level					S
Activity 1.1.2.1: Review of the National Planning and Development Policies including in depth reviews on Andros and Town Planning Committee on New Providence	30-Mar-24	90%	95%	Consultant Engaged during June 2023 to finalize the review of the Land Use Plans (LUP) in conjunction with the Department of Physical Planning.	
Activity 1.1.2.2: Collate and update selected species and ecosystems baseline for incorporation into the tools	30-Jun-23	70%	85%	IDB collated ecosystems baseline for incorporation into tools during February 2023. Awaiting final review.	
Activity 1.1.2.3: Development of 2 sub-national plans for Andros and New Providence	31-Jul-23	95%	95%	Urban Planner consultant Engaged during June 2023, to finalize the review of the Land Use Plans (LUP) in conjunction with the Department of Physical Planning	
Activity 1.1.2.4: Public consultations/review process of the proposed land-use plans for Andros and New Providence	31-May-23	40%	40%	Consultant slated to undertake two consultative workshops (virtual and open house) in an effort to meet department of physical planning's guidelines.	
Activity 1.1.2.5: Approval of the Land-use plans	31-Jul-23	0%	0%	This activity was amended in the last PIR 2022 based on the Mid Term Report to from the "Approval of Land-Use Plan" to the "Submission of the Land-Use Plans".	
Output 1.2.1: Tailored tools, methodologies, and training for integration of biodiversity into forest management/ land use management					MS

Activity 1.2.1.1: Identification of tools, methodologies and training programs to be used for the integration of BD into SLM/SFM at DPP/TPC, FU, DLS and Local Government levels	30-Apr-23	60%	99%	Final Documents submitted, awaiting approval letter form the IDB.	
Activity 1.2.1.2: Review and Selection of appropriate tools, methodologies and training programs at meeting with Stakeholders	30-Apr-23	70%	99%	Activity completed, the IDB submitted Toolkit selection and methodologies in February 2023. IDB conducted extensive reviews within the community.	
Activity 1.2.1.3: Development of integrated Land Use Planning Materials	30-Sep-23	95%	99%	IDB submitted integrated land use plan material based on review and study. Utilization of these materials await final approval.	
Activity 1.2.1.4: Feedback on developed tools from agencies	30-Apr-24	0%	99%	IDB conducted community feedback in November 2022 and Open House feedback in March 2023. Final feedback documents and case study submitted and utilized in toolkit	
Activity 1.2.1.5: Integration into policy framework and follow-up of tools with stakeholders and Local Administrators	30-Jun-24	0%	99%	Local Government Administrator handed over 12 toolkit documents for utilization and implementation. Awaiting feedback on effective integration of material from Administrator.	
Output 1.2.2: Awareness building modules - benefits of sustainable land use and forest management.					S
Activity 1.2.2.1: Development of Awareness and Communication strategies	31-Oct-23	80%	90%	Project partners to execute individual strategies based on project guidelines. Final awareness building strategies to be submitted by the communication office at the ministry of Environmental and Natural Resources.	
Activity 1.2.2.2: Develop action plan, including training programme, to build capacity and awareness of strategy and policy options and mainstreaming tools and disseminate relevant information widely	31/10/2023	60%	90%	Action plan developed and to be finalized in conjunction with the Communications Office at the Ministry of Environment and Natural Resources.	
Activity 1.2.2.3: Strengthen public awareness, learning and sharing experiences at local, regional and national levels using appropriate multi-media methods	31-Oct-23	80%	80%	All projects partners engaged in public awareness strategies. Forestry Unit Conducted awareness building campaign in March 2023. BAIC and the Department of Environmental Planning Protection conducted news interviews and infomercials during the Sustainable Livelihoods Technical Exchange in a joint effort to disseminate project information.	
Under Comp 2					
Output 2.1.1: Establishment of National Forestry Estate inclusive of Conservation & Protected Forests					S
Activity 2.1.1.1: Obtain GIS dataset layers developed in Activity 1.1.1.2	30-Jan-21	100%	100%	Completed	
Activity 2.1.1.2: Collaborative efforts over the finalization of boundaries with Forestry Unit, DPP, Town Planning Committee, Depts. Of Lands & Surveys, and BNGIS Centre	31-Jan-23	85%	85%	No progress During this Period.	
Activity 2.1.1.3: Collaboration with DPP for insight and cooperation in the land classification designations	30-Nov-23	50%	75%	DPP and Land and Surveys in conjunction with the Forestry Unit to develop land classification and designation currently effort are ongoing with these departments to finalize land-use.	
Activity 2.1.1.4: Submit boundaries to Parliament and proceed through the approval processes (Public Consultations, Cabinet approvals) for the Gazettal of the National Forestry Estate	30-Jan-24	45%	50%	No work during this period.	
Output 2.2 - Community co-management of 2 Conservation forests (representing 15% of Conservation Forests)					MS
Activity 2.2.1: Obtain GIS dataset layers developed in Activity 1.1.1.2	31-Jan-21	100%	100%	Activity Completed	

Activity 2.2.2: Develop a National Forest Plan as per Forestry Act 2010 Part II 5: (1) (a) – (e)	31-Oct-21	100%	100%	National Plans complete and submitted in December 2021.	
Activity 2.2.3: Submit the national forest plan for review to the Minister of Environment & Housing, and Public Consultation as per Forestry Act 2010 Part II 5: (2)	30-Nov-23	45%	100%	Activity Completed.	
Activity 2.2.4: as per Forestry Act 2010 Part II 5: (3) after the Minister has approved a national forest plan, the plan shall be tabled in Parliament and subsequently Gazetted	30-Nov-23	0%	95%	National Forest Plan has been submitted, the Forestry Unit to provide a follow up on the status of approval.	
Activity 2.2.5: Develop a Forest Management Plan for 2 Conservation Forest areas as per Forestry Regulations, 2014 Part V- (19) (1) (a) – (e)	30-Nov-23	30%	90%	ICCF to submit draft Management Plans for Sawmill Sink Abaco with the Conservation of Abaco and Twin Lakes within the conservation forest of Andros.	
Activity 2.2.6: Collaborative efforts over the finalization of boundaries with Forestry Unit, DPP, Town Planning Committee, Depts. Of Lands & Surveys, and BNGIS Centre; In addition to developing partnerships with community-based associations for the management of Forest Areas	30-Nov-23	30%	60%	With the constant economic growth and development in New Providence the boundaries are constantly being redefined. Project partners are committed to proper designation of land -use.	
Activity 2.2.7: Conduct Public Consultation of the Proposed Management for Conservation Forest areas	30-Mar-23	50%	60%	Forestry Unit conducted stakeholder engagement and consultation at the community level on both Abaco and Andros thorough the past year. Town meetings where also held to assist in zoning the Conservation Forest to separate ecotourism and biodiversity	
Activity 2.2.8: Develop a Sustainable Financial Plan for the 2 Conservation Forest Areas in Abaco and Andros	30-Jun-24	10%	50%	Forestry Unit and ICCF travelled to Abaco in August 2022 and October 2022 to Andros to conduct public consultation with forest management plan. Activity dependent on Activity 2.2.6.	
Activity 2.2.9: After consultation, The Minister shall grant formal approval of the 2 Conservation Forest Areas in Abaco and Andros	11-Feb-23	25%	55%	Activity is dependent on completion of Activity 2.2.5.	
Activity 2.2.10: Implementation of Conservation Forest Areas in Abaco and Andros	11-Feb-23	50%	50%	Consultancy contract drafted for review and awaits completion of activity 2.2.8 before being advertised. Consultant to implement management plan and create natural trails and boardwalk for Sawmill sink Blue and Forest Area and zone land to separate forestry	
Activity 2.2.1.1: Monitoring of activities within Conservation Forest areas	30-Nov-23	0%	55%	Monitoring of Conservation Forest ongoing in conjunction with stakeholder engagements and completion of Sustainable Financial Plan. Forestry Officers activity	
Activity 2.2.1.2: Strengthen public awareness, learning and sharing experiences at local, regional and national levels using appropriate multi-media methods (ref. to activity 1.2.2.3)	31-Jan-24	45%	80%	Forestry Unit travelled to Abaco Sawmill Sink Blue Hole and Forest and also to Andros Twin Lakes to conduct stakeholders engagement. This also served as an opportunity for dissemination of project information. Forestry Unit conducted Town Meetings throughout the year for both Andros and Abaco.	
Output 2.3: Restoration of Andros Davis Creek Mangrove system (50 ha) with CO2 savings up to 14,563 tCO2 eq					MS
Activity 2.3.1: Conduct specific site assessment and determine baseline analysis	30-Sep-22	75%	100%	Activity Completed.	
Activity 2.3.2: Develop and commence implementation of Participatory based Site-Specific Management Plans based on the SFM principles for restoring/rehabilitating degraded mangrove	30-Nov-22	55%	65%	Consultancy Group conducted a preliminary assessment and Gap assessment for Davis Creek in conjunction with the Forestry Unit. This was to ensure usage of SFM principles completed in November 2022. Town Meeting hosted during February 2023 for Davis Creek stakeholder engagement by consultant.	
Activity 2.3.3: Develop and implement a community-based monitoring of the rehabilitated mangrove site	30 feb 23	40%	65%	Mangrove Action Project (MAP) hosted a training and capacity building workshop in March, 2023. During this workshop 16 members of the community were trained in "Community Based Ecological Mangrove Restoration". MAP listed recommendations to	

Activity 2.3.4: Research and Monitoring programme established for indicator species	30 feb 23	25%	30%	Davis Creek consultant currently conducting research and monitoring with the assistance of the community members in an effort to develop a Community Monitoring Plan.	
---	-----------	-----	-----	---	--

Under Comp 3

Output 3.1 Pilot Model Sustainable Cultivation of Native Palms					MS
Activity 3.1.1: Resource assessment of silver top and cabbage palms	6-Jun-23	80%	100%	Final resource assessment submitted by the Agriculture and Applied Sciences consultants	
Activity 3.1.2: Develop Industry Education awareness for Palm Cultivation	9-Jun-23	90%	95%	Creative Nassau continuing training efforts on the Indigenous Crafts Trade. BAIC conducted 4 day technical exchange training (prepared during June and executed in	
Activity 3.1.3: Promotion of Sustainable harvesting of silver top & cabbage palms	30-Sep-23	55%	60%	Sustainable Harvesting Method of Silvertop promoted at both Technical Exchanges.	
Activity 3.1.4: Promotion of Indigenous Craft trade (using harvested Palm tops)	30 feb 23	45%	55%	Indigenous Craft trade was promoted at both technical exchanges. Local artisans were educated about the use of Palm tops. BAIC and the Department of Environmental	
Activity 3.1.5: Establish a formalized plantation of palms for ornamental landscape market	30-Sep-23	35%	45%	Parcel developed for Red Bays. BAIC and Forestry Unit awaiting crowns grant to be bestowed to the Red Bays Acklins Cooperative.	
Activity 3.1.6: Develop Marketing Promotion Strategy of Indigenous Craft trade (using harvested palm tops)	6/9/2023	45%	90%	Marketing Strategy Data existing and awaits finalization by consultant.	
Activity 3.1.7: Establish a formalized plantation of palms for ornamental landscape market	30-Sep-23	35%	35%	Both sites for Red Bay and Hard hill Acklins (5 acres and 100 acres) selected and surveyed. Sites are in need of steady flow of water and electricity. Red Bays doesn't need surveying because it under forestry registry. Red Bays waiting on confirmation of	
Output 3.2 Pilot Model Sustainable Cascarilla Cultivation and Processing					MS
Activity 3.2.1: Resource assessment of cascarilla on Acklins, Crooked Island, Samana Cay and Plana Cays	9-Feb-23	75%	100%	Consultant completed Final Resource Assessment in February 2023	
Activity 3.2.2 Promotion of Sustainable harvesting of cascarilla	9-Apr-23	80%	85%	Consultant conducted training in sustainable harvesting and propagation-methods with locals during November 4th -12th consisting of 20 locals and 10 school students. The	
Activity 3.2.3: Develop Industry Education system to build capacity	30-Sep-23	60%	75%	Technical Exchange hosted during March and slated for July between St. Lucia and members of the Acklins Cooperative in an effort to train and build capacity amongst	
Activity 3.2.4: Establish a formalized plantation on 4 pilot sites totaling 10 hectares (25 acres each): Acklins, Crooked Island	1-Oct-23	70%	85%	Green House and irrigation system established on Spring Point Cascarilla Reserve by Platinum Technology. Opening ceremony to be hosted during the last quarter of 2023	
Activity 3.2.5: Develop Marketing Plan for Promotion of Cascarilla products (bark and oil)	30-Sep-23	90%	100%	Completed	
Activity 3.2.6: Conduct socioeconomic background baseline to the communities by focusing on gender, age, economic status	1-Mar-22	100%	100%	Socioeconomic study completed in February 2022 (Dr. Sing). The socioeconomic studies where submitted by both consultants to BAIC and to the DEPP.	

The Task Manager will decide on the relevant level of disaggregation (i.e. either at the output or activity level).

4 Risk Rating

4.1 Table A. Project management Risk

Please refer to the Risk Help Sheet for more details on rating

Risk Factor	EA's Rating	TM's Rating
1 Management structure - Roles and responsibilities	<p>Low : Well developed, stable Management Structure and Roles/responsibilities are clearly defined/understood. Low likelihood of potential negative impact on the project delivery.</p> <p>Low : Steering Committee and/or other project bodies meet at least once a year and Active membership and participation in decision-making processes. SC provides direction/inputs. Low likelihood of potential negative impact on the project delivery.</p>	<p>Low : Well developed, stable Management Structure and Roles/responsibilities are clearly defined/understood. Low likelihood of potential negative impact on the project delivery.</p> <p>Low : Steering Committee and/or other project bodies meet at least once a year and Active membership and participation in decision-making processes. SC provides direction/inputs. Low likelihood of potential negative impact on the project delivery.</p>
2 Governance structure - Oversight	<p>Moderate: Project progressing according to work plan and Adaptive management and regular monitoring. Moderate likelihood of potential negative impact on the project delivery.</p>	<p>Moderate: Project progressing according to work plan and Adaptive management and regular monitoring. Moderate likelihood of potential negative impact on the project delivery.</p>
3 Implementation schedule	<p>Moderate: Activities are progressing within planned budget and Balanced budget utilisation including PMC. Moderate likelihood of potential negative impact on the project delivery.</p>	<p>Moderate: Activities are progressing within planned budget and Balanced budget utilisation including PMC. Moderate likelihood of potential negative impact on the project delivery.</p>
4 Budget	<p>Low : Funds are correctly managed and transparently accounted for and Audit reports provided regularly and confirm correct use of funds. Low likelihood of potential negative impact on the project delivery.</p>	<p>Low : Funds are correctly managed and transparently accounted for and Audit reports provided regularly and confirm correct use of funds. Low likelihood of potential negative impact on the project delivery.</p>
5 Financial Management	<p>Moderate: Substantive reports are presented in a timely manner and Reports are complete and accurate with a good analysis of project progress and implementation issues. Moderate likelihood of potential negative impact on the project delivery.</p>	<p>Moderate: Substantive reports are presented in a timely manner and Reports are complete and accurate with a good analysis of project progress and implementation issues. Moderate likelihood of potential negative impact on the project delivery.</p>
6 Reporting	<p>Moderate: Sound technical and managerial capacity of institutions and other project partners and Capacity gaps were addressed before implementation or during early stages. Moderate likelihood of potential negative impact on the project delivery.</p>	<p>Moderate: Sound technical and managerial capacity of institutions and other project partners and Capacity gaps were addressed before implementation or during early stages. Moderate likelihood of potential negative impact on the project delivery.</p>
7 Capacity to deliver		

If any of the risk factors is rated a Moderate or higher, please include it in Table B below

4.2 Table B. Risk-log

Implementation Status (Current PIR)

7th PIR

Insert ALL the risks identified either at CEO endorsement (inc. safeguards screening), previous/current PIRs, and MTRs. Use the last line to propose a suggested consolidated rating.

Risk	Risk affecting:	Risk Rating							Variation respect to last rating	
	Outcome / outputs	CEO ED	PIRs 1&2	PIR 3	PIR 4	PIR 5	PIR 6	PIR 7	Δ	Justification
Key Project partners, communities, farmers and hunters are not prepared to fully participate in the process, exchange information or materials;	Output 2.1.1, Output 2.2, Output 3.1, and Output 3.2	H	Not Applicable	H	H	M	L	L	=	With the stepped-up execution of the project over the past years, notwithstanding the pandemic, government agencies continue to be actively involved in the project contributing to a lowered risk. All project partners are directly engaged with stakeholder which facilitate the completion of the activities and the output.

Adoption of land-use planning strategies may lead to resistance from Local Government Island Administrators which will lead to continued fragmented landscapes because of competing land-uses	All Outputs	M	Not Applicable	M	M	M	L	L	=	Department of Environment Planning and Project Partners engaged in the acquisition of a new urban planner slated to be hired for September 2023 to revise and aid in the adoption of the New Providence and Andros Land Use Plans. The Urban Planner will integrate the Land Use Plan along with biodiversity values into policy and navigate these document to the relevant agencies to assist in the adoption of the plans and aid the submission of final documents to Local Government and Administrators to prevent fragmented landscapes.
Long-term monitoring system developed and implemented	Output 1.1.1, Output 2.1.1, Output 2.2, Output 2.3, Output 3.1, and Output 3.2	M	Not Applicable	M	M	M	L	L	=	Project partners committed to continued monitoring and refinement of monitoring systems. Both the Acklins Cooperative and the Red Bays Cooperative continue to monitor there forestry reserves to safeguard the valuable non-timber forestry products. FAO is also committed to finalizing monitoring systems document in conjunctions with the Forestry Unit. Forestry Officers continue to travel and monitor the relevant pine islands to ensure continual monitoring and stakeholder engagement.
Land ownership and access within coastal communities	Output 2.3, Output 3.1, and Output 3.2	M	Not Applicable	Not Applicable	M	M	M	M	=	The project continues to integrate coastal communities into land ownership and to protect lands granted via crowns grant to local communities. Red Bay Conservation Forest parcels has been surveyed and resource assesment has been submitted resulting in the development of maps and plans in an attempt to grant the locals with 80.4 ha of land as a forestry reserve for the sustainable harvest and cultivation of silver top palm. In part 42.49 ha has been granted to Acklins community members for the cultivation of cascarilla bark and oil allowing for locals to directly benefit from this access and land ownership. The Forestry Unit's Declaration of Protected Trees Act approved in 2021 protects both the harvest of cascailla and silvertop palm allowing locals to effectively limit encroachment on lands by other non native communities. Proposal for intergation of land use plans require a concentrated effort by the government to allow the statutory provision for the boundaries submitted.
Sustainable Livelihoods	Output 3.1, and Output 3.2	M	Not Applicable	M	M	M	L	L	=	The project continues to support the local and indigenous community in the safeguarding of the forest ecosystems and utilization of non-timber forestry product within the rural communities to develop socioeconomic and climate resilience. The project has continued its investment to assist locals in developing self sustaining livelihoods through education (both on the local and regional level) and community engagement, infrastructure development and financial support. The progress attained in this reporting period contribute to lessened risk and low risk rating.
Forest fires	Output 1.1.2, Output 3.1, and Output 3.2	M	Not Applicable	M	M	M	L	L	=	The Forestry Unit developed a national forest plan and submitted this document to the Minister of Environment and Natural Resources to provide a guide and plan to limit Forest Fires and protect the natural habitat and diversity within the National Forestry Estate. The Forestry Unit continue to monitor the forestry estate area and have been trained in prescribed burns and the execution of contingency plans in the event of Forest fire. The gazzement of this National Forest Plan should limit the forest fire risk that may emerge as an increasing long-range management issue considering climate change influences.
Data collection risk, in terms of non-validated reports or other data that could be incorrect or misstated.	All Outputs	Not Applicable	Not Applicable	H	H	M	L	L	=	The project partners continue to make efforts to ensure that quality control and quality assurance measures are implemented to ensure data accuracy and validity.]
Partners, having made implementation commitments and set goals, back away from or abandon their goals as deadlines approach.	All Outputs	Not Applicable		H	M	M	L	L	=	Partners remain committed to success of the project. Responsible agencies via the project steering committee are engaged through upkeep of monthly meetings and communication to maintain activities on schedule.

Drafted and proposed legislation is not passed into law	Output 2.1.1	Not Applicable	Not Applicable	M	M	M	M	M	=	The risk remains unchanged; the project requires the government to support policy as it relates to the legalization and Gazettement of the National Forestry Estate (New Providence, Grand Bahama, Abaco, Andros) and the adoption of the Land Use Plans for New Providence and Grand Bahama. Legislation require multilateral and cross-institutional support for adoption of intended legislation..
Covid-19	All Outputs	Not Applicable	Not Applicable			H	L	L	↓	As the impacts of the pandemic subside due to health management strategies and the development of the universal vaccination initiatives, processes related to the project execution become normalized, the risk has correspondingly reduced.

Consolidated project risk	Not Applicable	Not Applicable	S	M	M	L	L		This section focuses on the variation. The overall rating is discussed in section 2.3.
----------------------------------	----------------	----------------	---	---	---	---	---	--	--

4.3 Table C. Outstanding Moderate, Significant, and High risks

List here only risks from Table A and B above that have a risk rating of **M or higher** in the current PIR

Risk	Actions decided during the previous reporting instance	Actions effectively undertaken this reporting period	Additional mitigation measures for the next periods		
			What	When	By whom
Adoption of land-use planning strategies may lead to resistance from Local Government Island Administrators which will lead to continued fragmented landscapes because of competing land-uses	Submitted Land-Use Plans where submitted and required revision.	Toolkits developed by the Inter-American Development Bank and where collected and adopted by the Islands Administrator. New Urban Planner consultant to be hired during the month of September 2023 to review and submit to land-use plan document to Government for adaptation into policies and planning.	New Urban Planner consultant engaged for hire slated for September 2023	Consultant to initiate works on September 2023, this Work slated to allow for submission of the intended adopted plans to Department of Physical Planning and Ministry of Works.	Indepnmet consultant Craig Christopher Russel and Co. in conjunction with Department of Physical Planning.
Land ownership and access within coastal communities	The project has been granted access to 105 acers on land on Ackins by the MOA to facilitate the project's cascarilla plantation pilot	The project through the lead agencies have been adopting a participatory and interactive approach in outreach and dialogue with communities to help reduce perception that decisions are via a top-down approach.	<ul style="list-style-type: none"> Continued public education outreach and provision of proactive feedback mechanisms Continued senior policy maker/ministerial level sensitization efforts 	Over the remainder of the project	BAIC supported by the DEPP
Drafted and proposed legislation is not passed into law	Land Use Draft for New Providence and Andros were submitted for review to the Town Planning Committee. Information obtained from land use surveys in New Providence and site visits to Andros are continuously incorporated in the Land Use Plan Draft	The project has fostered the push to involve multiple government agencies heads of department on the BPI land use plans insuring incorporation in national policy. Toolkits were developed and received. They will be delivered to the Department of Physical Planning on the 1st of August 2023.	<ul style="list-style-type: none"> Continued public education outreach and provision of proactive feedback mechanisms Continued senior policy maker/ministerial level sensitization efforts 	Over the remainder of the project	Physical Planning Department supported by the DEPP
Implementation schedule	Project partners to provide NPC with project tracking milestones, goal achievements and stakeholder communication.	Consultant required to submit comprehensive work plan prior to initiation of works. BAIC consultant has met the targets as listed prior to the finance mobilization. NPC to conduct meetings to refine project milestones with the Forestry Unit to address and navigate undue delays.	NPC and Project Partners to develop mitigation strategies and risk management strategies in the event of delays.	Implement from September 2023 to the end of Project.	Mitigation plans and other relevant document to be developed with NPC and project partners in an effort to prevent delays.

Budget	NPC, Project Partners and Taskmaster revised previous budget and submit budget revision to UNEP in 2022	NPC provided Budgetary estimates for quarter 3 and 4 of 2023 and provided to Project Partners along with the work plan and budgets revision of 2022
Reporting	Departments should submit technical reporting for each Output to Department of Environmental Protection and Planning for timely review and uploading to the Anubis	NPC submitted financial and Technical Reporting on time. Project Partners BAIC and Department of Physical Planning submitted reporting and relevant document timely and during deliverables submission. Consolidated data submission recommended for deliverables by Forestry Unit.
Capacity to deliver	Focus was placed on Forestry Unit skill enhancement, committing to ArcGIS training for members of the forestry unit. The Forestry Unit is also committed to parallel Tasking so	BAIC with NPC conducted mobilization for financial resource allocation to develop capacity to complete project activities resulting in several project milestones completed. Critical Task identified for Department of Physical Planning and reviewed with NPC resulting in new consultant slated to complete final Land-Use Plans Review processes for integration of biodiversity

Project Partners Should effectively utilized funding provided in the budget rephasal. NPC recommended consolidation of work to improve planning and logistics.	Implemented over the remainder of the Project.	NPC to provide monthly budgetary updates to project partners. NPC request project partner submit reports and project milestones in conjunction with expenditure, and reporting on logistics.
Department of Environmental Planning and Protection (the Executing Agency) along with NPC will require quarterly reports and submission of bi-weekly status updates. Establishment of key elements in reporting format such as activity milestones, feedback loops, status update and achievements.	Implemented over the remainder of the Project.	Project Partners required to submit project documents upon completion of deliverables and reporting as stated in their work plan. NPC to Encourage feedback from consultants and stakeholders to improve project reporting.
Project Partners to revised capacity need and meet with NPC to adjust where limitation are identified.	Implemented over the remainder of the Project.	Project Partners along with NPC to outline capacity need and address limitation where identified. Each Project partner will outline and consolidate limitations such as training and logistics where necessary.

High Risk (H): There is a probability of greater than 75% that **assumptions** may fail to hold or materialize, and/or the project may face high risks.
Significant Risk (S): There is a probability of between 51% and 75% that **assumptions** may fail to hold and/or the project may face substantial risks.
Moderate Risk (M): There is a probability of between 26% and 50% that **assumptions** may fail to hold or materialize, and/or the project may face only modest risks.
Low Risk (L): There is a probability of up to 25% that **assumptions** may fail to hold or materialize, and/or the project may face only modest risks.

Project Minor Amendments

Minor amendments are changes to the project design or implementation that do not have significant impact on the project objectives or scope, or an increase of the GEF project financing up to 5% as described in Annex 9 of the Project and Program Cycle Policy Guidelines. Please tick each category for which a change occurred in the fiscal year of reporting and provide a description of the change that occurred in the textbox. You may attach supporting document as appropriate.

5.1 Table A: Listing of all Minor Amendment (TM)

Minor amendments	Changes	Minor amendments
Results framework		Project no cost extensions
Components and cost		
Institutional and Implementation arrangements		
Financial management		
Implementation schedule	Explain in table B	
Executing Entity		
Executing Entity Category		
Minor project objective change		
Safeguards		
Risk analysis		
Increase of GEF project financing up to 5%		
Co-financing		
Location of project activity		
Other		

5.2 Table B: History of project revisions and/or extensions (TM)

Version	Type	Signed/Approved by UNEP	Entry Into Force (last signature Date)	Agreement Expiry Date	Main changes introduced in this revision
Original Legal Instrument			17-Nov-15	Dec-20	
Amendment 1	Extension	16-Dec-19	17-Dec-19	30-Dec-22	Extended timeframe; COVID19 pandemic related. No changes to project
Amendment 2	Extension	13-Sep-22	13-Sep-22	30-Dec-24	Extended timeframe; continued fall-out from COVID19 pandemic-related delays. No changes to project

GEO Location Information:

The Location Name, Latitude and Longitude are required fields insofar as an Agency chooses to enter a project location under the set format. The Geo Name ID is required in instances where the location is not exact, such as in the case of a city, as opposed to the exact site of a physical infrastructure. The Location & Activity Description fields are optional. Project longitude and latitude must follow the Decimal Degrees WGS84 format and Agencies are encouraged to use at least four decimal points for greater accuracy. Users may add as many locations as appropriate. Web mapping applications such as [OpenStreetMap](https://www.openstreetmap.org/#map=42.1,84.02,79) (<https://www.openstreetmap.org/#map=42.1,84.02,79>) or [Geonames.org](http://www.geonames.org/) use this format. Consider using a conversion tool as needed, such as <https://coordinates-converter.com>. Please see the Geocoding User Guide by clicking [here/https://portal.worldbank.org/App/asset/general/Geocoding%20user%20guide.docx](https://portal.worldbank.org/App/asset/general/Geocoding%20user%20guide.docx)

Location Name <small>Required field</small>	Latitude <small>Required field</small>	Longitude <small>Required field</small>	Geo Name ID <small>Required field if the location is not an exact site</small>	Location Description <small>Optional text field</small>	Activity Description <small>Optional text field</small>
Crooked Island Plantation (Hardhill Settlements)	22.60307	-73.88334	Spring Point Cascarilla Reserve	Cascarilla Coppice Forest Plantation	Plantation Site Resource Assessment Site
Andros Plantation, Red Bays	25.140469	-78.187609	Red Bay Silvertop Reserve	Pine Forest: Silver Top Forest Plantation	Plantation Site Resource Assessment Site
New Providence	25.02382	-78.187609		Forest Reserve	National Forestry Estate
New Providence	25.020573	-77.430557	NFENP	Forest Reserve	National Forestry Estate
Grand Bahama	26.47512	-77.430557	NFGB	Forest Reserve	National Forestry Estate
Davis Creek	24.7451066	-77.8123964	Davis Creek	Mangrove Creek System	Mangrove Restoration and Monitoring
National Forest Estate Grand Bahama	26.65969656	-78.34028	National Forest Estate Grand Bahama	Forest Reserve	Proposed Grand Bahama National Forestry Estate
National Forestry Estate Nassau	25.0212049	-77.4065956	National Forest Estate Nassau - New Providence	Pine Forest and Mangrove/Wetland Ecosystem	Proposed National Forestry Estate Nassau (New Providence)
Crooked Island Cascarilla Cultivation Site	22.6043934	-73.875485	Crooked Island Cascarilla Cultivation Site	Cascarilla Cultivation Site	Sustainable Livelihood Cascarilla Cultivation
Andros Red Bays Resource Assessment	25.1361359	-78.1843349	Andros Red Bays Resource Assessment	Silver Top Cultivation Site	Sustainable Harvesting of Silver top Palm in Red Bays Community

Please provide any further geo-referenced information and map where the project interventions is taking place as appropriate. *



Clark Creek Watershed Site



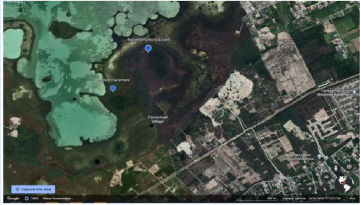
Stone Top Wind Site



Grand Salinas Forest Reserve



Crooked Island Casuarina Cultivation Site



Proposed National Forestry Reserve Area Grand Salinas